

Clinical Mobility Solutions

Streamlining Frontline Reporting

Mobile solutions provide seamless communication at the point of care, streamlining productivity, improving quality, and increasing satisfaction.



CPOE **Telemedicine**
Mobility ^{HL7} **DICOM**
Stage 7 **EMR**
Mobile Vitals Collection
Specialty Workflows
Meaningful Use
Closed-Loop Medication

ADVANTECH

**Digital
Healthcare**

www.advantech.com/medical

Clinical Mobility Enables Superior Care Quality

Mobility is transforming current healthcare delivery methods. According to a report by IDC, clinical mobility spending will grow from \$2.9 billion in 2011 to \$5.4 billion in 2016, CAGR 12.7%. The seamless communication provided by mobile devices enhances collaboration among patients, doctors, nurses, carers, administration, and IT staff. This collaboration reduces time spent, improves workforce utilization, and reduces healthcare costs. Clinical mobility also facilitates rapid information delivery, which enables doctors to consult their peers without delay and make a critical diagnosis sooner. The continuing development of mobile health technology will drive improvements to healthcare quality for patients and working environments for hospital staff.

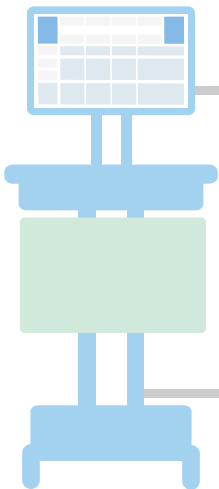
74%

of clinicians expect to be utilizing the combination of a tablet, smartphone, and computer routinely in a professional capacity by 2015.



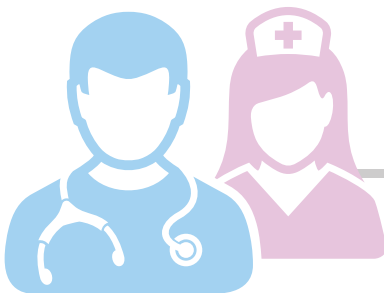
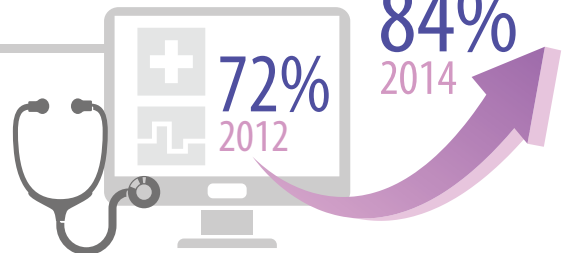
More than 80%

of nurse practitioners, physician assistants, and pharmacists contend that mobile device usage has led to improved patient care.



84%

of physicians surveyed had adopted an EHR in 2014, up from 72% in 2012.

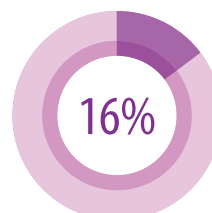
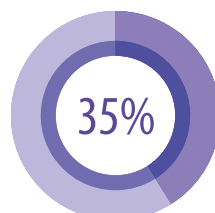


Professional tasks clinicians most frequently conduct using a tablet

1. EHR/Notes/e-Prescribing

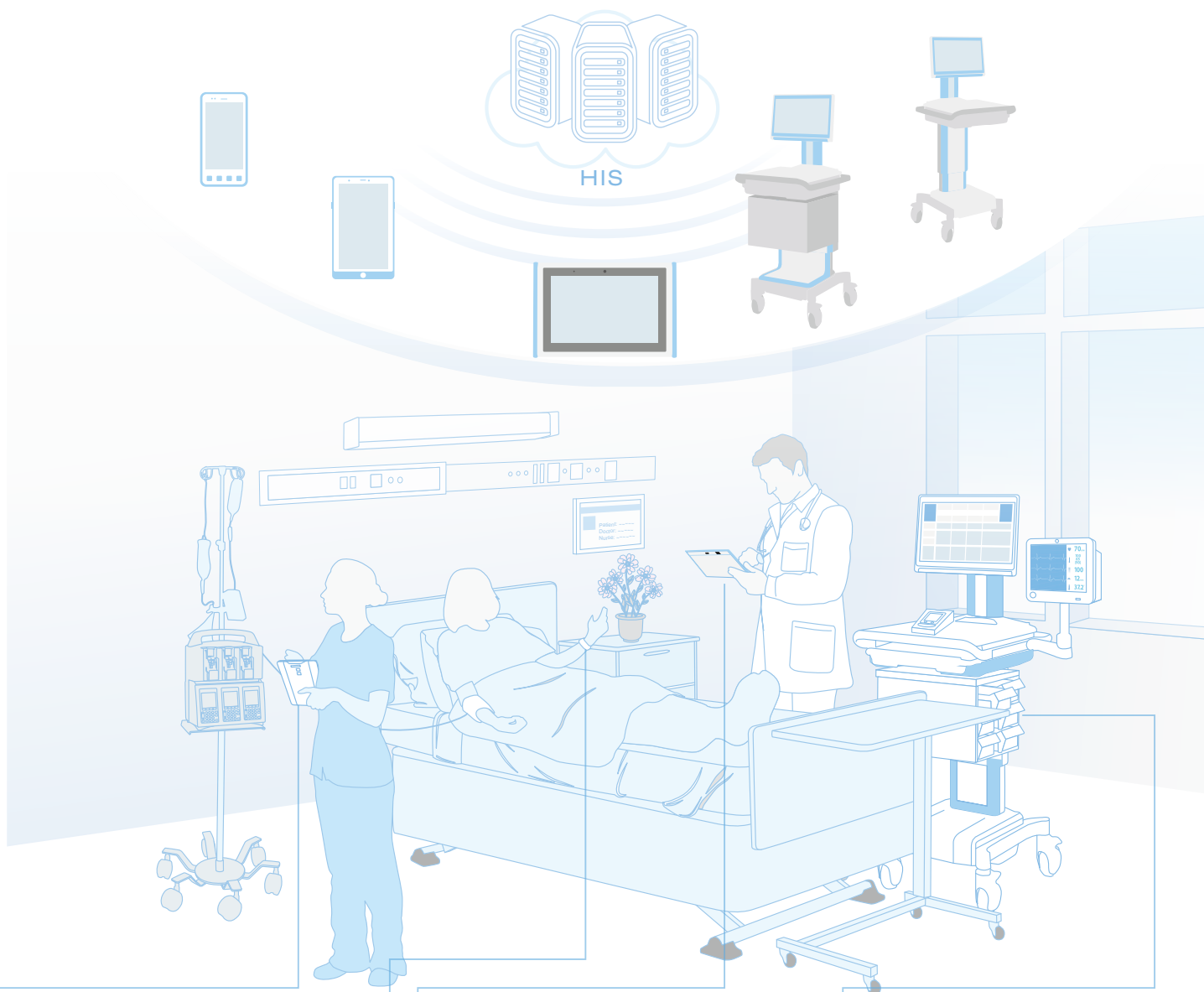
2. Search

3. Access professional resources, such as Epocrates or Medscape



Streamlining Frontline Reporting

The Internet of Things (IoT) enables hospitals to leverage cloud computing and transform the delivery of healthcare to include mobile devices, HIS systems, and the cloud. Advantech offers multiple clinical mobility solutions designed for IoT healthcare environments to increase productivity and accuracy in the patient care process.



Infusion Management

Optimize patient infusion delivery with interoperability and real-time infusion status.



Communication

Mobile devices allow extensive collaboration among clinicians, nurses, and other hospital staff.



Video Capture

Use the tablet camera to capture or transmit photographs or data recordings.



CPOE/EMR

Readily available patient information and easy order entry using tablets allows doctors to continue their work without interruption.



Identity Check

Confirm patient identity using the embedded barcode scanner.



Vital Signs Collection

With mobile devices, patients' vital sign data can be easily collected and rapidly uploaded to the hospital server.



Closed-Loop Medication

Scan barcodes on patient wristbands for medication safety checks.



Asset Management

RTLS technology allows hospitals to track the location of diverse devices and equipment.

Introducing Next-Generation Clinical Mobility Devices

Clinical Tablets

Advantech's MICA series products are specifically designed for hospital applications. They combine the best components in a lightweight and flexible package to ensure patient safety. Build intelligent hospitals with MICA series products.

Lightweight and pocket sized for portability



1D/2D barcode scanner embedded



Rugged design with 90-cm shock tolerance



IP54-certified device case for easy cleaning and infection control



Add a hand strap for secure wearability



Full range of peripherals and accessories for future upgrades





(Only available in China currently, and other regions by request.)

MICA-051

5" Android Pocket Pad

- Pocket-sized solution that fits in your hand
- 5" HD resolution LCD with P-cap multi-touch technology for enhanced user experience
- Equipped with an Intel® Atom™ Z series processor
- Supports Android 4.2.2
- IP65-certified enclosure protects from dust and water and allows easy cleaning
- -20 ~ 60 °C wide temperature range
- Drop-tested at 120 cm to ensure reliable operation
- Features a 1D/2D barcode scanner and 8 MP camera w/ flash
- Lightweight, with a total weight of 295 g



MICA-071

7" Win 8 Pocket Pad

- Pocket-sized solution that fits in your hand
- 7" HD resolution LCD with P-cap multi-touch technology for enhanced user experience
- Equipped with an Intel® Atom™ Z series processor
- Supports Windows 8.1 Industry Pro
- IP54-certified enclosure protects from dust and water and allows easy cleaning
- Features a 1D/2D barcode scanner, 2 MP front camera, and 8 MP AF rear camera w/ flash



MIT-W101

10" Medical Tablet PC

- Intel® Celeron® N2930 Quad Core processor
- Support Windows 8 Operating System
- 10.1" WXGA, Projective Capacitive Multi Touch Display
- -10°C to 50°C (14°F to 122°F), IP65 compliant, and 4ft drop, MIL-STD 810G
- Compact/Slim design: 20mm/0.79inch height
- Seamless Communications, Including Wi-Fi, BT, NFC
- Warm Swappable Battery
- Optional Integrated 1D/2D Barcode Scanner And Expansion Module (MSR+SMC)
- Optional Accessories include: 6ft Drop Rugged Bumpers, Docking Station, Rear Hand Strap, and Kickstand

Going Mobile at the Point of Care

Medical Carts

Advantech's AMiS medical cart is a highly integrated computerized nursing cart that optimizes the patient care process by providing a mobile point-of-care station that is seamlessly integrated into a first-class medical nursing cart.

Large working space and intuitive dashboard design



Ergonomic design for ease of use and maintenance



Designed for increased safety, reliability, and infection control



Computer embedded and Wi-Fi



Long-lasting LFP battery with intelligent power management system



Substantial flexibility with a modular upgrade path





AMiS-30

Laptop-Ready Medical Cart

- The best solution for physician rounds and bedside documentation, particularly in emergency rooms and ICUs
- Can be integrated with a laptop or tablet to provide mobile healthcare solutions
- Easily transformed into a nursing or dispensing cart
- Can be upgraded with a long-life battery or additional accessories
- Multiple accessories fulfill diverse needs
- Large wheels for mobility on various floor types



AMiS-30i

Economic Computerized Medical Cart

- Can be integrated with an All-in-One (AIO) device and display to serve as mobile healthcare solutions
- The best solution for physician rounds and bedside documentation, particularly in emergency rooms and ICUs
- Easily transformed into a light nursing or dispensing cart
- Powerful battery system for an extended computer run time
- Large wheels for mobility on various floor types



AMiS-50

Computerized Medical Cart

- Highly-integrated computerized medical cart for mobile healthcare solutions
- Motorized adjustment of table height available
- Designed for safety and reliability
- Large wheels for mobility on various floor types
- Powerful battery system for an extended computer run time

AMiS-60

Computerized Medical Cart

- Highly-integrated computerized medical cart for mobile healthcare solutions
- Can be expanded to include an additional medication and/or storage box
- Ergonomic design for ease of use, cleaning, and moving
- Great flexibility for customization, configuration, and integration
- Designed for safety, reliability, and easy maintenance
- Elegant and tidy design and easily adjustable table height
- Long battery life increases manageability



Regional Service & Customization Centers

China Kunshan 86-512-5777-5666	Taiwan Taipei 886-2-2692-6076	Netherlands Eindhoven 31-40-267-7000	Poland Warsaw 48-22-33-23-730	USA Milpitas, CA 1-408-519-3800
---	--	---	--	--

Worldwide Offices

Greater China China Toll Free 800-810-0345 Beijing 86-10-6298-4346 Shanghai 86-21-3632-1616 Shenzhen 86-755-8212-4222 Chengdu 86-28-8545-0198 Hong Kong 852-2720-5118 Taiwan Toll Free 0800-777-111 Neihu 886-2-2792-7818 Xindian 886-2-2218-4567 Taichung 886-4-2378-6250 Kaohsiung 886-7-229-3600	Asia Pacific Japan Toll Free 0800-500-1055 Tokyo 81-3-6802-1021 Osaka 81-3-6802-1021 Korea Toll Free 080-363-9494 Seoul 82-2-3663-9494 Singapore Singapore 65-6442-1000 Malaysia Toll Free 1800-88-1809 Kuala Lumpur 60-3-7724-3555 Penang 60-4-537-9188 Thailand Bangkok 66-2-248-3140 India Toll Free 1800-425-5071 Bangalore 91-80-2545-0206 Indonesia Jakarta 62-21-7511930/39 Australia Toll Free 1300-308-531 Melbourne 61-3-9797-0100 Sydney 61-2-9476-9300	Europe Toll Free 00800-2426-8080 Germany Munich 49-89-12599-0 Düsseldorf 49-2103-97-855-0 France Paris 33-1-4119-4666 Italy Milano 39-02-9544-961 Benelux & Nordics Breda 31-76-5233100 UK Reading 44-0118-929-4540 Poland Warsaw 48-22-33-23-740 / 41 Russia Toll Free 8-800-555-01-50 Moscow 7-495-644-0364 St. Petersburg 7-812-332-5727	Americas North America Toll Free 1-888-576-9668 Irvine, CA 1-949-420-2500 Milpitas, CA 1-408-519-3898 Cincinnati 1-513-742-8895 Brazil Toll Free 0800-770-5355 Saude-São Paulo 55-11-5592-5355 Mexico Toll Free 1-800-467-2415 Mexico City 52-55-6275-2777
---	---	---	---



Enabling an Intelligent Planet

www.advantech.com

Please verify specifications before ordering. This guide is intended for reference purposes only.
All product specifications are subject to change without notice.
No part of this publication may be reproduced in any form or by any means, electronic, photocopying, recording or otherwise, without prior written permission of the publisher.
All brand and product names are trademarks or registered trademarks of their respective companies.
© Advantech Co., Ltd. 2015