



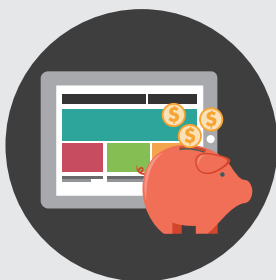
# Advantech Intelligent eMenu Solution

A Valuable Tool for Providing a Pleasant Dining Experience



## Stimulate Appetites with Dynamic and Visual Broadcasting eMenu

Enhance 5% of total revenue of the restaurant with abundant promoting content shown on the eMenu board.



## Lowering Operating Cost All at Once

Comparing to the traditional menus, we help you to decrease an average of 7% of operating cost per restaurant which includes printing and manpower cost.



## Manage Your eMenu Content Remotely with Easy 3 Steps

Through WebAccess/IMM, you can edit the menu content, arrange it to broadcast in a predefined time slot, and even change the menu, update the price and promotions easily with just 3 steps.



## Manage Signage Contents Up to 500 Displays on the Remote Ends

The eMenu solution adapts with cloud managing structure. Restaurant owners can manage the signage contents up to 500 displays on the remote ends.

**ADVANTECH**

**Intelligent Services**

[www.advantech.com/iretail-hospitality](http://www.advantech.com/iretail-hospitality)



# Manage Your eMenu Content Remotely With Easy 3 Steps

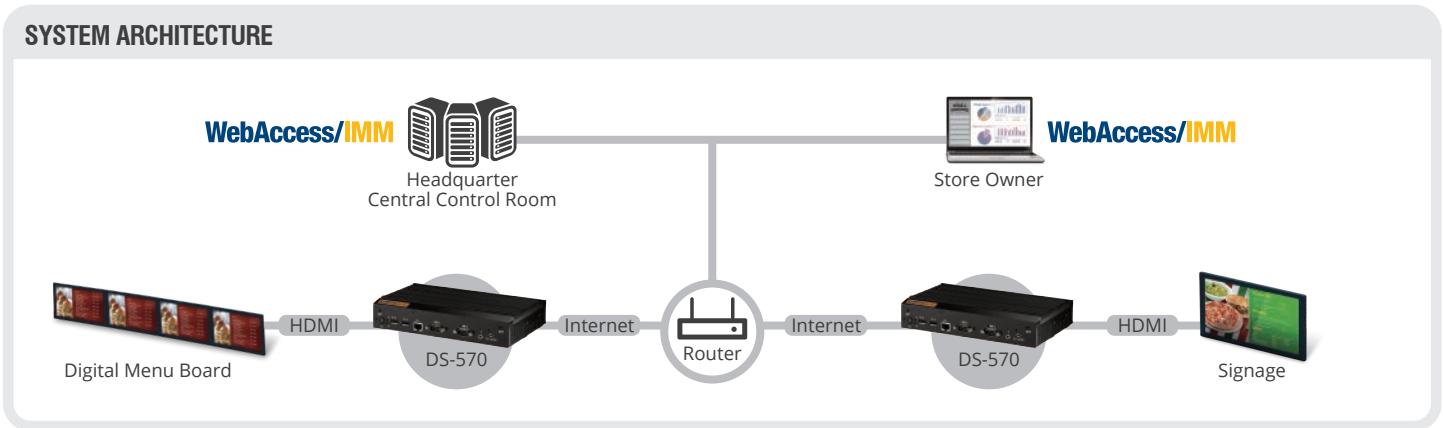
Through WebAccess/IMM, you can edit the menu content, arrange it to broadcast in a predefined time slot, and even change the menu, update the price and promotions easily with just 3 steps.

**1 STEP** Upload Multimedia Content

**2 STEP** Organize Content Layout

**3 STEP** Schedule and Dispatch Broadcasts

## SYSTEM ARCHITECTURE



## PRODUCT INFORMATION

### DS-570 Compact UHD Signage Player

- Supports simultaneous multi-display up to 4 outputs
- Built-in content management and security software



### WebAccess/IMM Cloud-Based Software

- Centralized menu management
- Supports 500+ client devices/branches
- Supports automatic playback scheduling

## CASE STUDY Yoshinoya



### Dynamic Digital Menu Board Delights Customers Maximized Target Sales and Customers' Satisfaction

Yoshinoya, a global quick-service Japanese restaurant chain with more than 1,800 locations across the world, recently opened a branch unveiling more variety and value with fresh new menu items, a simpler ordering process, and a whole new look. The dynamic digital menu board is made of four displays which play real-time freshest ingredients of the season, avoiding changing the paper menu. The customer was looking for a flexible solution which allowed either the remote IT department or onboard customer service team to update the menu boards with the latest information. For Yoshinoya's project, Advantech offers more than just the hardware, but also content management solution and service; as a result, our customer enjoys faster time-to-market with lower total cost of ownership.