

Smart Web-Based Signage Solutions

Efficient Content Deployment Drives Customer Engagement

- ✓ Value Proposition
- ✓ Product Portfolio
- ✓ Management Software
- ✓ Case Studies
- ✓ Selection Guide



Content Security



Scheduling



Content Management



Real-time Maintenance

ADVANTECH

Enabling an Intelligent Planet

A New Era of Digital Signage: Smart, Interactive, Personalized

Digital signage is everywhere you go in retail stores, restaurants, airports, train stations and more. It has become a powerful marketing tool and is moving to the next level with three key developments: smart, interactive, and personalized. In the IoT era, digital signage connects seamlessly to all types of devices for better customer experience and data collection for business intelligence.

To connect everything in the IoT era, Advantech digital signage solution covers most business and varied environment needs, from single store to center management, commercial to industrial applications. All systems can be bundled with WiFi, 3G or LTE module to provide diverse communication capabilities.

Diversified Product Portfolio

Advantech provides a complete product portfolio supporting FHD/UHD, 2~6 multiple-displays, and various form factors. Customers can easily select the right product that fits their requirement best.

Simplified Signage Manageability

Advantech signage players are pre-loaded with WebAccess/IMM, the web-based multimedia software which enables customers to manage the entire signage network with efficiency.



Reliable & Secured Operation

Advantech eliminates cabling inside of signage players for optimized system reliability, thermal efficiency and ease of maintenance. With WISE-PaaS/RMM, the device monitoring software, we reduce customers' deployment effort and provide 24/7 security.

Flexible Customization Services

Advantech offers great customization flexibility with strong technical know-how for specific requirements. We help customers build personalized signage solutions to ensure your business success.



Product Portfolio

Series	Entry Level	Advanced Computing	Multi-Display	OPS
Items				
Features	<ul style="list-style-type: none"> High price-performance ratio solutions Low power & fanless design 	<ul style="list-style-type: none"> Intel Core i series solutions Powerful computing 	<ul style="list-style-type: none"> Video wall solutions Supports flexible configuration 	<ul style="list-style-type: none"> Intel Open Pluggable Standard solutions Slot-in & Cableless design
Target Applications	<ul style="list-style-type: none"> Window sign Welcome board 	<ul style="list-style-type: none"> Self-service KIOSK Queuing system 	<ul style="list-style-type: none"> eMenu board Video wall 	<ul style="list-style-type: none"> Interactive whiteboard eBulletin
Max. Resolution	1920 x 1080 (FHD)	3840 x 2160 (UHD)	4096 x 2160 (True 4K)	4096x 2160 (True 4K)
Display Capability	2	2	3 ~ 6	2
Models	<ul style="list-style-type: none"> DS-063/DS-065 DS-080 (Celeron) DS-370 	<ul style="list-style-type: none"> DS-060/DS-061 DS-080 (Core i5) 	<ul style="list-style-type: none"> ARK-DS762 DS-570 DS-780 DS-980 	<ul style="list-style-type: none"> ARK-DS262 DS-270 DS-280

Right Message, Right Audience, Right Time

Web-based Management

- Remote editing and dispatch
- Managing up to 500 clients
- Supports public, private, LAN circumstances

User-friendly Interface

- Visualization interface
- Drag and drop operation
- Multi-display support:
Distinct/Clone/Extended mode

Media Format

- TV/Webpage /Flash/PPT/Scrolling Text
- Image: JPG/GIF/BMP/PNG
- Video/Audio: MPEG/AVI/WMV/WMA/MP3/FLV



WebAccess/IMM

Passenger Information

- SW:
- Support real-time information on multiple screens
 - Whitelist protection against unauthorized content
- HW:
- 4 outputs with high C/P ratio

Interactive Signage Broadcasting

- SW:
- Support different content formats on multiple screens
- HW:
- 3 outputs with advanced computing and connectivity

Self-service Kiosk

- SW:
- Support web content for interactive social media content, and mobile gaming
- HW:
- Ultra slim for installation in limited spaces



Accurate Advertising Signage

- SW:
- Display accurate advertising content to targeted customers
- HW:
- Ultra slim design with advanced computing power

Transportation

eMenu board

- SW:
- Schedule menu by different time section, and dispatch timely promotional activity
- HW:
- Support up to 4 outputs with discrete graphics and high C/P

Interactive Video Wall

- SW:
- Manage video wall layout/content
 - Customized software for interactivity
- HW:
- Supports up to 6 individual display outputs



Retail

Real-time Secure Remote Monitoring and Management

Device Monitoring

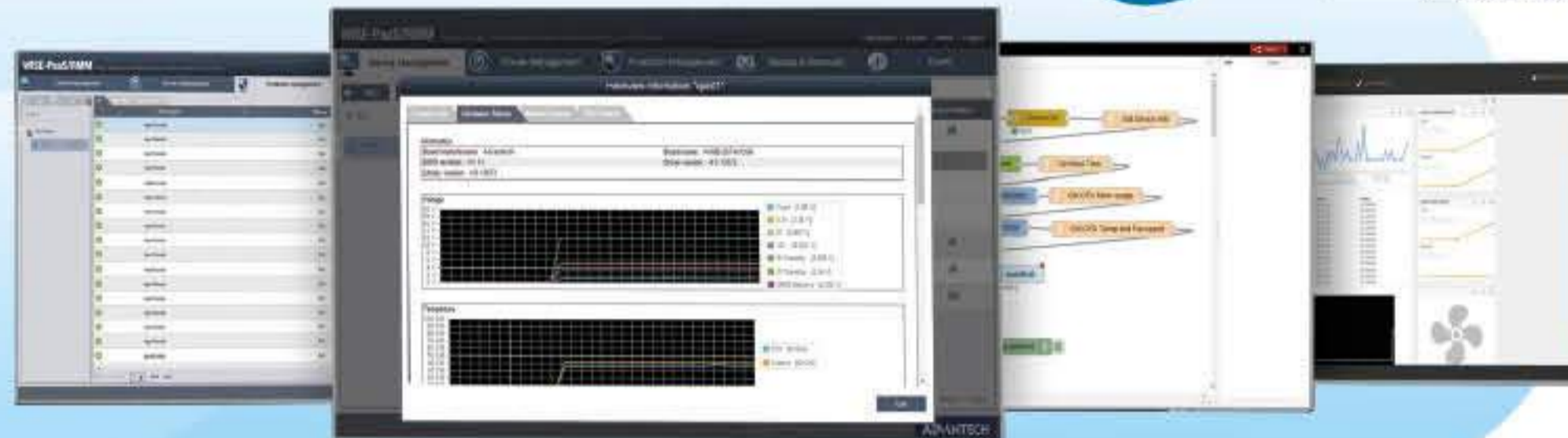
- Software status
- Sensor/Device connectivity
- CPU temperature, fan speed and voltage

Remote Control

- Remote KVM for diagnostic and repair
- Remote on/off for remotely located devices

Content Security/System Recovery

- Whitelist protection from authorized content
- Timely backup and recovery application
- One-Click recovery



WISE-PaaS/RMM

Clinic Self Check-In

- SW:
- Multimedia layouts for check-in procedures, real-time wait lists, etc
 - Manage check-in system status

- HW:
- Silent fanless design with rich connection

Patient Queuing System

- SW:
- Easy layout editing for queuing, marketing and branding information broadcasting
 - Real-time emergency information delivery

- HW:
- Ultra Slim design with flexible expansion

Nurse Station eBulletin

- SW:
- Real-time emergency information delivery
 - Easily review & backup all the information by Acronis

- HW:
- OPS cable-less design for easy maintenance

Healthcare

Interactive Whiteboard

- SW:
- Support video, audio, text and diagrams
 - Support touchscreen operation

- HW:
- OPS cable-less design with high computing performance
 - Support video conferencing

Welcome Board

- SW:
- Deliver welcome message tailored to each visitor & manage the visitor data to the central server
 - Schedule to turn the screen on and off

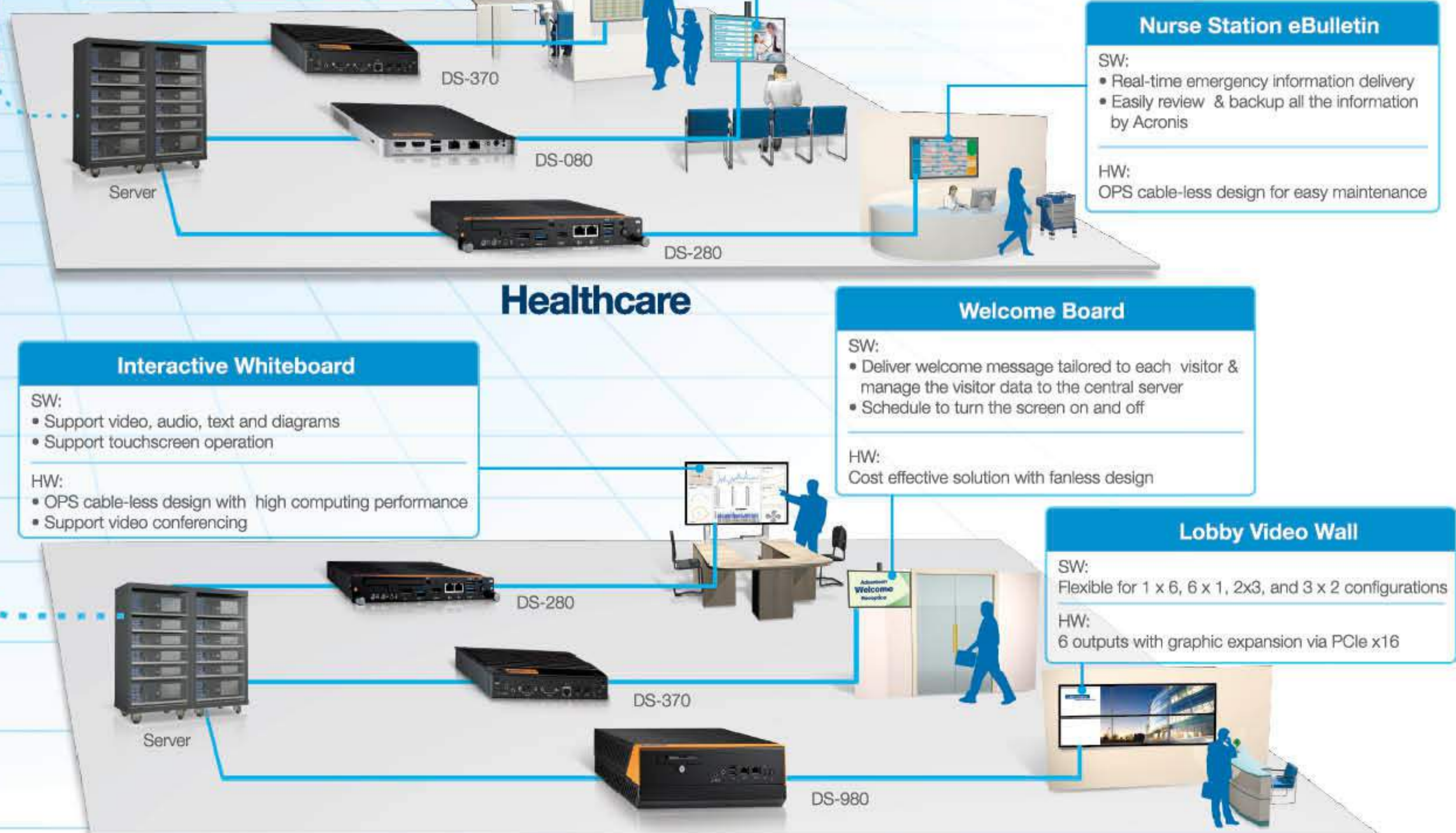
- HW:
- Cost effective solution with fanless design

Lobby Video Wall

- SW:
- Flexible for 1 x 6, 6 x 1, 2x3, and 3 x 2 configurations

- HW:
- 6 outputs with graphic expansion via PCIe x16

Institute



Digital Signage Maximizes Passenger Experience in Airports

Challenge

Increasing air travel means airports these days are busier than ever and passenger numbers are on the rise everywhere. Because of this, FIDS (Flight Information Display Systems) play an important role in assisting passengers with accurate travel information and help. Potential onsite technical problems could have serious consequences that disrupt the smooth operation of the airport so reliability and ease of maintenance are key factors in developing a FIDS.

Solution

Advantech DS-370 provides powerful computing platform that drives up to dual FHD displays for accurate real-time flight information as well as infotainment and advertisements. With wireless connectivity such as Bluetooth, NFC or RFID, DS-370 can recognize that a passenger has arrived and can track their progress and instantly dispatch flight information derived from the FIDS to their mobile device. Built-in WISE-PaaS/RMM and WebAccess/IMM software empowers DS-370 to be a complete signage solution that significantly enhances management and maintenance. An abnormal alert can be sent back to the control room to implement remote repairs instantly, eliminating time wasted on traveling back and forth. Built-in McAfee security software ensures unapproved content cannot be broadcast.

Area: China



3D Rewards Center Kiosk Keeps Retailers In Touch With Mall Shopper

Challenge

Our customer is currently the market leader in true 3D consumer advertising displays. Their new 3D holographic kiosk is equipped with two 17" displays; one projects videos in front of the screen without the need for special glasses and the other one is a 2D interactive touchscreen that provides consumers with quick access to promotions, coupons, or other retailer specific programs.

Solution

To meet the customer's tight schedule and high performance requirements, Advantech DS-061, along with full design-in support, helped a customer develop their new 3D holographic kiosks with reduced design costs, development time, and time-to-market. DS-061 supports simultaneous dual Full-HD 1080P and 3D graphic capability via DP and VGA interface, delivering a premium visual experience. Moreover, DS-061 supports multiple connections via USB, mini-PCle, and RS232 for a touch screen interface, plus a printer for printing out coupons, rewards and promotions inside the retail stores.

Area: USA



Interactive Whiteboard Enhances Business Communication

Challenge

Traditionally, people record and share meeting minutes via hard copy, but doing it his way takes lots of time and resources and is not environmentally friendly. One of our customers developed an advanced digital whiteboard system which was able to save notes and pictures as electronic files. This allows ideas to be shared among team members no matter where they are, enhancing work efficiency and productivity.

Solution

Considering the limited meeting spaces and real-time message delivery, Advantech DS-270 OPS signage player perfectly met the customers' needs. DS-270 was seamlessly integrated with an OPS display in the meeting room and no cables or wires were visible. With advanced computing, DS-270 delivers premium performance for a "just-like-being" there experience with video conferencing, text, and image displays. In addition, DS-270 is designed with two USB3.0 ports which allow writing notation directly on the screen and it supports GigaLAN and one internal mini-PCle to connect all devices in different conference rooms to share digital documents. Documents can also be saved to a PC or sent directly to a printer.

Area: Europe



Dynamic Digital Menu Board Delights Customers

Challenge

In China, our customer Yoshinoya, a global quick-service Japanese restaurant chain, recently opened a branch unveiling more variety and value with fresh menu items, a simpler ordering process, and a whole new look. The customer was looking for a flexible solution which allowed either the remote IT department or onboard customer service team to update the menu boards with the latest information.

Solution

Advantech offers more than just hardware, but also a content management solution and service; as a result, our customer enjoys faster time-to-market with lower total cost of ownership. DS-570 features a compact and fanless design so that they can easily install it behind the displays both on the store windows and on the walls. DS-570 supports four 1080 FHD displays simultaneously and is integrated with WebAccess/IMM web-based content management software so Yoshinoya can quickly change and edit their latest menus with seasonal offerings and deliver their promotions in real-time.

Area: China



Product Selection



		Entry Level Series			Advanced Computing Series	
		DS-063/DS-065	DS-080	DS-370	DS-060/DS-061	DS-080
Processor System	CPU	Intel Atom D2550/ Intel Atom N2600	Intel Celeron 3765U	Intel Celeron J1900	Intel Core i7-3615QE/ Intel Core i7-3517UE	Intel Core i5-5350U/ Intel Core i5-5200U
	BIOS	AMI uEFI 16 Mbit	AMI uEFI 128 Mbit	AMI uEFI 64 Mbit	AMI uEFI 64 Mbit	AMI uEFI 128 Mbit
	Chipset	Intel NM10	Integrated in CPU	Integrated in CPU	Intel QM77	Integrated in CPU
Memory	Technology	DDR3 800/1066 MHz	DDR3L 1600MHz	DDR3L 1333MHz	DDR3 1333/1600MHz	DDR3L 1600MHz
	Max. Capacity	4 GB	16GB (8GB per SODIMM)	8GB (4GB per SODIMM)	8 GB	16GB (8GB per SODIMM)
	Socket	1 x 204-pin SODIMM	2 x 204-pin SODIMM	2 x 204-pin SODIMM	1 x 204-pin SODIMM	2 x 204-pin SODIMM
Display	Controller	CPU Integrated	CPU Integrated	CPU Integrated	CPU Integrated	CPU Integrated
	Graphic Engine	Intel GMA 3650	Intel HD Graphics	Intel HD Graphics	Intel HD Graphics 4000	Intel HD 6000 (Core i5-5350U) Intel HD 5500 (Core i5-5200U)
	Graphic Memory	Shared system memory	Shared system memory	Shared system memory	Shared system memory	Shared system memory
	Multiple Display	Dual	Dual	Dual	Dual	Dual
	Interface	HDMI x 1, VGA x 1	HDMI x 2	HDMI x 1, DP+ x1, VGA x1	DP x 1, VGA x 1	HDMI x 2
Expansion Interface	Max. Resolution	1920 x 1080	1920 x 1080 @ 60Hz	2048 x 1280 @ 60Hz	1920 x 1080	3840 x 2160 @ 30Hz
	M.2	-	-	-	-	-
	Mini PCIe	1	1	2	1	1
Ethernet	Connector	RJ-45 x 1	RJ-45 x 2	RJ-45 x 2	RJ-45 x 1	RJ-45 x 2
	Audio	Connector	2 (Line-out, Mic-in)	1 (SPDIF/ Line-out/ Mic-in), supports Jack Sense	2 (SPDIF/ Line-out, Mic-in), supports Jack Sense	2 (Line-out, Mic-in)
WatchDog Timer		Yes	Yes	Yes	Yes	Yes
Storage	SATA	1 x 2.5" SATA II HDD/SSD	1 x 2.5" SATA III HDD/SSD	1 x 2.5" SATA II HDD/SSD; 64GB on-board uSSD (Op- tional)	1 x 2.5" SATA II HDD/SSD	1 x 2.5" SATA III HDD/SSD
	mSATA	Yes, colay Mini PCIe	Yes, colay Mini PCIe	Yes, colay Mini PCIe	-	Yes, colay Mini PCIe
I/O	USB3.0	-	4	1	2	4
	USB2.0	4	-	3	2	-
	COM Port	1 (RS-232)	1 (RS-232/422/485) or 2 (RS-422/485) with extension cable	2 (RS-232)	1 (RS-232)	1 (RS-232/422/485) or 2 (RS-422/485) with extension cable
Power	Power Supply	DC 19V input	DC 19V input	DC 19V input	DC 19V input	DC 19V input
Environment	Operational Temperature	0 ~ 40°C (32 ~ 104°F) (w / HDD)	0 ~ 40°C (32 ~ 104°F) (w / HDD) with 0.7m/s air flow	0 ~ 40°C (32 ~ 104° F) (w / HDD) 0 ~ 50°C (32 ~ 122° F) (w / Onboard Micro SSD)	0 ~ 40°C (32 ~ 104°F) (w / HDD)	0 ~ 40°C (32 ~ 104°F) (w / HDD) with 0.7m/s air flow
Physical Characteristics	Dimensions (L x W x H)	180 x 190 x 19 mm	180 x 190 x 19 mm	204 x 118.2 x 44.2 mm	180 x 190 x 19 mm	180 x 190 x 19 mm
Operating System		Microsoft Windows, Linux (Option)	Microsoft Windows, Linux (Option)	Microsoft Windows, Linux (Option)	Microsoft Windows, Linux (Option)	Microsoft Windows, Linux (Option)
Certifications	EMC	CE, FCC Class B, CCC, BSMI	CE, FCC Class B, CCC, BSMI	CE, FCC Class B, CCC, C-Tick, BSMI	CE, FCC Class B, CCC, BSMI	CE, FCC Class B, CCC, BSMI
	Safety	UL, CB, CCC, BSMI	UL, CB, CCC, BSMI	UL, CB, CCC, BSMI	UL, CB, CCC, BSMI	UL, CB, CCC, BSMI

Interactive Multimedia Software **WebAccess/IMM**

Media Type	Image, Video, Scrolling Text, Bulletin Board, Time, Flash, PowerPoint, Webpage
Program Management	Customize Program Layouts, Program Preview, Urgent Cast
Output	HD/Full HD Output, Portrait/Landscape Display, Multi-screen Output, Audio Output
Schedule Management	Daily/Weekly/Monthly Schedule, Appointment Dispatch, Dispatch Records
Remote Player Management	Unlimited Multipoint Broadcasting, Player Group Setting Remote Power on/off (Intel AMT), Remote Software Upgrade, Auto Shutdown Setting, Hardware Monitoring, Software Monitoring, Screenshot Real-time Monitoring
System Management	Authorization Setting, Simultaneous Editing, System backup/ Recovery, Resume Download, Differential Download, App Monitoring
Operating System	Server: Windows 7 or above Windows Server 2008 or above Client: Windows 7 (Embedded/POSReady)



Multi-Display Series			OPS Series	
DS-570	DS-780	DS-980	DS-270	DS-280
Intel Celeron J1900	Intel Core i7-6650U/ Intel Core i5-6360U	Intel Core i7-6700TE/ Intel Core i5-6500TE/ Intel Core i3-6100TE	Intel Celeron J1900	Intel Core i7-6822EQ/ Intel Core i5-6442EQ
AMI uEFI 64 Mbit	AMI uEFI 128 Mbit	AMI uEFI 128 Mbit	AMI uEFI 64 Mbit	AMI uEFI 128 Mbit
Integrated in CPU	Integrated in CPU	Intel Q170	Integrated in CPU	Intel QM170
DDR3L 1333MHz	DDR4 2133MHz	DDR4 2133MHz	DDR3L 1333MHz	DDR4 2133MHz
8GB (4GB per SODIMM)	32GB (16GB per SODIMM)	32GB (16GB per SODIMM)	8GB (4GB per SODIMM)	32GB (16GB per SODIMM)
2 x 204-pin SODIMM	2 x 260-pin SODIMM	2 x 260-pin SODIMM	2 x 204-pin SODIMM	2 x 260-pin SODIMM
NVIDIA GeForce GT730M	CPU Integrated	CPU Integrated	NVIDIA GeForce GT730M	CPU Integrated
-	Intel Iris Graphics 540	Intel HD Graphics 530	-	Intel HD Graphics 530
1 GB (On board memory)	Shared System Memory	Shared system memory	1GB (On board memory)	Shared system memory
Four	Triple	Triple+ (up to six with graphic card)	Dual	Triple
HDMI x 2, DP++ x 1, VGA x 1	HDMI 2.0 x 1, HDMI 1.4 x 2	HDMI 2.0 x 1, HDMI 1.4 x 2	JAE TX25 80-pin x 1, HDMI x1	JAE TX25 80-pin x 1, HDMI x1, DP x1
3840 x 2160 @ 30Hz	4096 x 2160 @ 60Hz	4096 x 2160 @ 60Hz	3840 x 2160 @ 30Hz	4096 x 2304 @ 60Hz
-	1 (2230/1630 E-Key)	1 (2230 E key)	-	-
*2	1	1	1	1
-	-	1	-	-
*RJ-45 x 2	RJ-45 x 2	RJ-45 x 2	RJ-45 x 1	RJ-45 x 2
2 (SPDIF/ Line-out, Mic-in), supports Jack Sense	1(SPdif/ Line-out/ Mic-in), supports Jack Sense	2 (SPDIF/ Line-out, Mic-in), supports Jack Sense	1 (Line-out), supports Jack Sense	1 (Line-out), supports Jack Sense
Yes	Yes	Yes	Yes	Yes
1 x 2.5" SATA II HDD/ SSD	1 x 2.5" SATA III HDD/SSD	1 x 2.5" SATA III HDD/ SSD (top); 1 x 2.5" SATA III SSD (bottom), support RAID 0/1	1 x 2.5" SATAII HDD/SSD	1 x 2.5" SATA III HDD/ SSD
Yes, colay Mini PCIe	Yes, colay Mini PCIe	Yes, colay Mini PCIe	Yes, colay Mini PCIe	Yes, colay Mini PCIe
1	4	4	2	3
3	-	2	-	-
2 (RS-232) or 1 (RS-232/422/485) + 1 (RS-232) (by option)	1 (RS-232)	1 (RS-232)/ 2 (RS-485 & 422 with extension cable)	-	-
DC 19V input	DC 19V input	DC 12V input	DC 12V-24V input (via OPS connector)	DC 12V-19V input (via OPS connector)
0 ~ 40°C (32 ~ 104° F) (w/ HDD) 0 ~ 65°C (32 ~149° F) (w/ SSD)	0 ~ 40°C (32 ~ 104° F) (w/ HDD) with 0.7m/s air flow	0 ~ 40°C (32 ~ 104° F)	0 ~ 40°C (32~104° F) (w/ HDD) ; 0 ~ 50°C (32~122° F) (w/ SSD)	0 ~ 40°C (32 ~104° F) (w/ HDD); 0 ~ 50°C (32 ~122° F) (w/ SSD)
220 x 150 x 44.2 mm	235 x 175 x 35 mm	267.6 x 205 x 88 mm	200 x 119 x 30 mm	200 x 119 x 30 mm
Microsoft Windows, Linux (Option)	Microsoft Windows, Linux (Option)	Microsoft Windows, Linux (Option)	Microsoft Windows, Linux (Option)	Microsoft Windows, Linux (Option)
CE, FCC Class B, CCC, BSMI	CE, FCC Class B, CCC, BSMI	CE, FCC Class B, CCC, BSMI	CE, FCC Class B, CCC, G-Tick, BSMI	CE, FCC Class B, CCC, BSMI
UL, CB, CCC, BSMI, LVD	UL, CB, CCC, BSMI	UL, CB, CCC, BSMI	UL, CB, CCC, BSMI	UL, CB, CCC, BSMI

Remote Monitoring and Management Platform **WISE-PaaS/RMM**

Device Management	IPC Device Management, Group View, Map View, HW Status Monitoring & Rule Setting, SW Process Monitoring & Rule Setting, Data Auto Report, Dashboard
Remote KVM	Remote KVM, Terminal Mode, Intel AMT Integration , Screenshot
Power Management	Remote On/Off, Hibernate, Power On/Off Scheduling
System Protection	McAfee White List Protection
System Recovery	Acronis Backup/Recovery, Backup/Recovery Scheduling, Hot-Key Recovery
Notification Center	Event Log, Email Notification, SMS Notification
Management Interface	Account/Role management, Mobile Mode, Web-Based Console
Others	RESTful API Web Service

Regional Service & Customization Centers

China Kunshan 86-512-5777-5666	Taiwan Taipei 886-2-2792-7818	Netherlands Eindhoven 31-40-267-7000	Poland Warsaw 00800-2426-8080	USA/ Canada Milpitas, CA 1-408-519-3898
---------------------------------------------	--------------------------------------------	---------------------------------------------------	--------------------------------------------	------------------------------------------------------

Worldwide Offices

Greater China

China	
Toll Free	800-810-0345
Beijing	86-10-6298-4346
Shanghai	86-21-3632-1616
Shenzhen	86-755-8212-4222
Chengdu	86-28-8545-0198
Hong Kong	852-2720-5118
Taiwan	
Toll Free	0800-777-111
Neihu	886-2-2792-7818
Xindian	886-2-2218-4567
Taichung	886-4-2329-0371
Kaohsiung	886-7-229-3600

Asia Pacific

Japan	
Toll Free	0800-500-1055
Tokyo	81-3-6802-1021
Osaka	81-3-6802-1021
Korea	
Toll Free	080-363-9494
Seoul	82-2-3663-9494
Singapore	
Singapore	65-6442-1000
Malaysia	
Kuala Lumpur	60-3-7725-4188
Penang	60-4-537-9188
Indonesia	
Jakarta	62-21-751-1939
Thailand	
Bangkok	66-2-248-3140
India	
Pune	91-20-3948-2075
Bangalore	91-80-2545-0206
Australia	
Toll Free	1300-308-531
Melbourne	61-3-9797-0100
Sydney	61-2-9476-9300

Europe

Germany	
Toll Free	00800-2426-8080/81
Munich	49-89-12599-0
Düsseldorf	49-2103-97-885-0
France	
Paris	33-1-4119-4666
Italy	
Milano	39-02-9544-961
Benelux & Nordics	
Breda	31-76-5233-100
UK	
Newcastle	44-0-191-262-4844
London	44-0-870-493-1433
Poland	
Warsaw	48-22-31-51-100
Russia	
Moscow	8-800-555-01-50
St. Petersburg	8-800-555-81-20
Czech Republic	
Ústí nad Orlicí	420-465-521-020
Ireland	
Oranmore	353-91-792444

Americas

North America	
Toll Free	1-888-576-9668
Cincinnati	1-513-742-8895
Milpitas	1-408-519-3898
Irvine	1-949-420-2500
Ottawa	1-815-434-8731
Brazil	
Toll Free	0800-770-5355
São Paulo	55-11-5592-5355
Mexico	
Toll Free	1-800-467-2415
Mexico City	52-55-6275-2727

ADVANTECH

Enabling an Intelligent Planet

www.advantech.com

Please verify specifications before ordering. This guide is intended for reference purposes only. All product specifications are subject to change without notice. No part of this publication may be reproduced in any form or by any means, electronic, photocopying, recording or otherwise, without prior written permission of the publisher. All brand and product names are trademarks or registered trademarks of their respective companies. © Advantech Co., Ltd. 2016

8600000263