

Revolutionary Industrial PC for IoT Era

With innovative i-Modules For flexible expansion



ADVANTECH

Enabling an Intelligent Planet

Revolutionary Industrial PCs for the IoT Era

With Innovative i-Modules for Flexible Expansion

**Comprehensive Expansion Options for
All Machine Automation Requirements**



	MIC-75M13	MIC-75M40	MIC-75M20	MIC-75M20-01	MIC-75M11	MIC-75S20
PCIe x16	1	-	1	-	1	1
PCIe x8	-	1	-	2	-	-
PCIe x4	-	3	1	-	-	1
PCIe x1	-	-	-	-	-	-
PCI	3	-	-	-	1	-
mini PCIe	-	-	-	-	-	-
Storage	2* 2.5' HDD bay (1xSATA CONN)	2* 2.5' HDD bay (1xSATA CONN)	-	-	-	2* 2.5' Hot-Swappable HDD tray
System fan	1x8CM (Optional)	1x8CM (Optional)	2x4CM (Optional)	2x4CM (Optional)	2x4CM (Optional)	1x8CM (Optional)
Dimension (WxHxD)	90x192 x230 mm	90x192x230 mm	45x192x230 mm	45x192 x230 mm	45x192 x230 mm	90x192x230 mm
Weight	1.1kg	1.1kg	0.8kg	0.8kg	0.8kg	1.3kg



Next-Generation Industrial PCs with Innovative i-Modules for Flexible Expansion

The MIC-7000 Series comprises compact modularized systems that support the innovative i-Module for flexible expansion to satisfy diverse application requirements. The MIC-7000 Series can be widely employed for factory and machine automation. The fanless and ruggedized design ensures that these systems can withstand the demands of harsh industrial environments. Furthermore, comprehensive modularized options and the ease of configuration effectively reduce lead times for Advantech's configure-to-order service (CTOS).

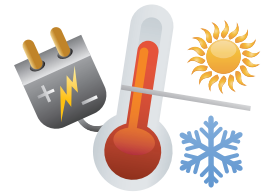
Modularized

- i-Module support for flexible expansion
- CTOS service for minimizing lead times



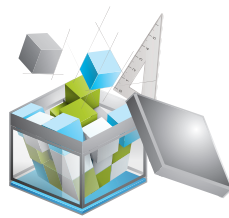
Ruggedized

- Compact and fanless design
- Supports wide DC input range and operating temperature



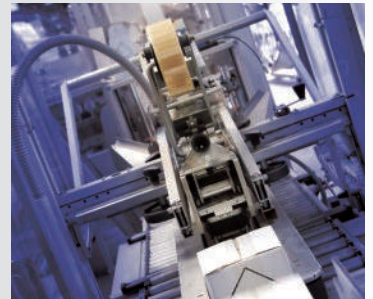
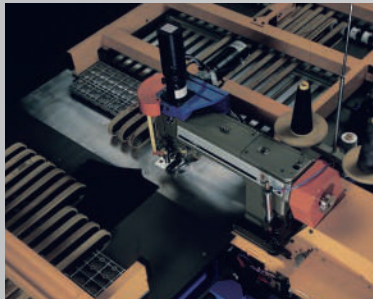
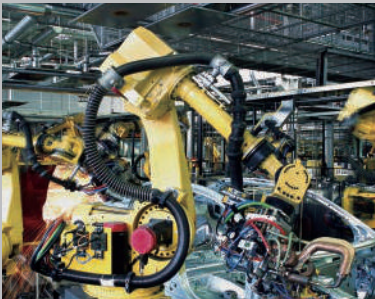
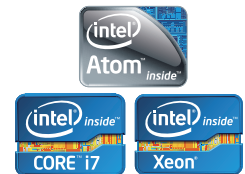
Customized

- 20 standard PCIe lanes for I/O customization and expansion
- Rapid development cycles and simple validation process



Optimized

- Available with various processors to satisfy specific application requirements



Next-Generation Industrial PC

MIC-7500

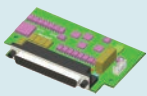
Compact Fanless System with 6th Generation Intel® Core™ i Processor

- Supports i-Modules
- Equipped with VGA and DVI interfaces
- Features isolation COM and 32-bit GPIO modules
- Powered by 6th Generation Intel® Core™ i7/i5/i3 BGA-type CPU with QM170 PCH
- 2 x RS-232/422/485 serial ports and 4 x RS232 (expansion via cable) ports

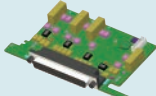


Supports Expansion Window

Secondary DVI Cable or Expansion Module



32-bit GPIO



RS-422/485 Isolation



TPM



Secondary DVI

Supports Advantech iDoor Technology

Mini PCIe Expansion Kit

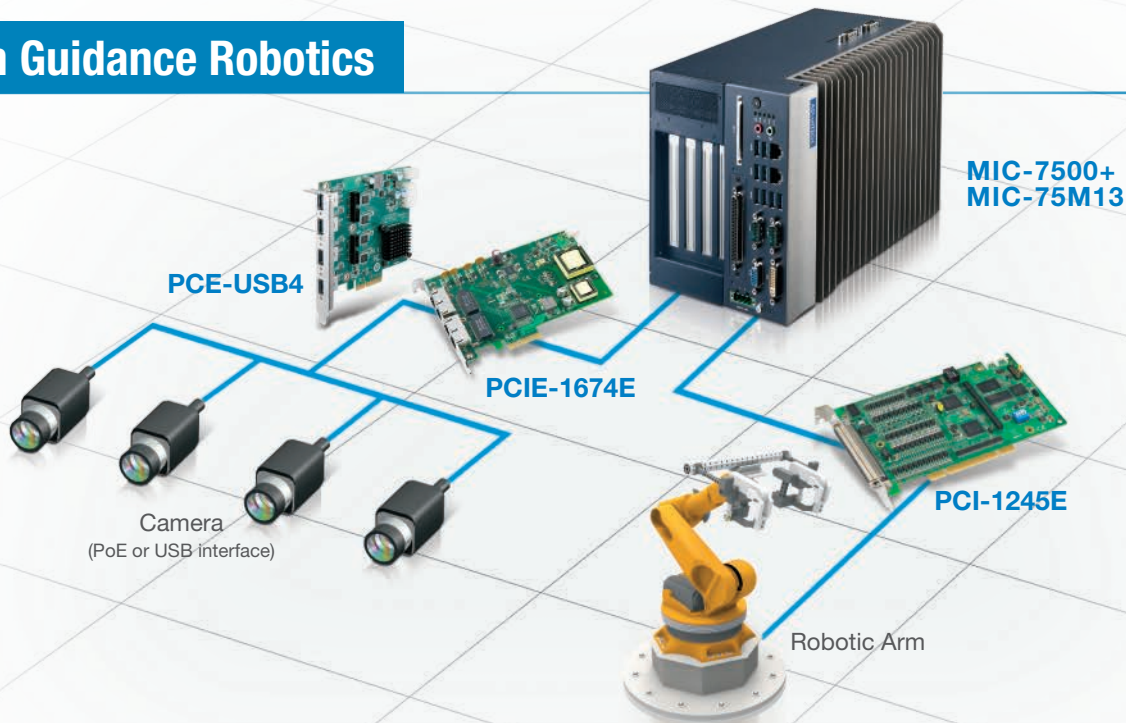


i-Door Module (MOS series)



i-Door Module (PCM series)

Vision Guidance Robotics



MIC-7500+
MIC-75M13

PCE-USB4

PCIE-1674E

PCI-1245E

Camera
(PoE or USB interface)

Robotic Arm

PCIE-1674E

4-Port 10/100/1000 BaseT(X) 802.3af (PoE) Compliant PCI Express Communication Card with Ethernet Ports



PCE-USB4

PCI Express x4, 4-Port USB 3.0 Expansion Card



PCI-1245

DSP-Based, 4-Axis Stepping/Servo Motor Control Universal PCI Card



Vehicle Braking Test System

TEXOL Dynagator
Analyses disc quality through
frequency domain conversion

PCIE-1816

DAQNavi

Advantech's next-generation
data acquisition software
development tool

**MIC-7500 +
MIC-75M20**

PCIE-1802

Dynamic Signal Acquisition
PCI Express Card

Accelerometer

Disc

Hammer

The vibrations generated by the hammer hitting the disc are measured using an accelerometer. This data is then transmitted to PCIE-1802 for analysis.

PCIE-1802

8-Channel, 24-Bit, 216 kS/s
Dynamic Signal Acquisition
PCI Express Card



PCIE-1816

1 MS/s, 16-Bit, 6-Channel
PCI Express Multifunction
DAQ Card



Regional Service & Customization Centers

China Kunshan
86-512-5777-5666

Taiwan Taipei
886-2-2792-7818

Netherlands Eindhoven
31-40-267-7000

Poland Warsaw
00800-2426-8080

USA Milpitas, CA
1-408-519-3898

Greater China

China	
Toll Free	800-810-0345
Beijing	86-10-6298-4346
Shanghai	86-21-3632-1616
Shenzhen	86-755-8212-4222
Chengdu	86-28-8545-0198
Hong Kong	852-2720-5118

Taiwan	
Toll Free	0800-777-111
Neihu	886-2-2792-7818
Xindian	886-2-2218-4567
Taichung	886-4-2329-0371
Kaohsiung	886-7-229-3600

Asia Pacific

Japan	
Toll Free	0800-500-1055
Tokyo	81-3-6802-1021
Osaka	81-3-6802-1021

Korea	
Toll Free	080-363-9494
Seoul	82-2-3663-9494

Singapore	
Singapore	65-6442-1000

Malaysia	
Kuala Lumpur	60-3-7725-4188
Penang	60-4-537-9188

Thailand	
Bangkok	66-2-248-3140

India	
Bangalore	91-80-2545-0206
Pune	91-20-3948-2075

Indonesia	
Jakarta	62-21-751-1939

Australia	
Toll Free	1300-308-531
Melbourne	61-3-9797-0100
Sydney	61-2-9476-9300

Europe

Germany	
Toll Free	00800-2426-8080/81
Munich	49-89-12599-0
Düsseldorf	49-2103-97-855-0

France	
Paris	33-1-4119-4666

Italy	
Milano	39-02-9544-961

Benelux & Nordics	
Breda	31-76-523-3100

UK	
Newcastle	44-0-191-262-4844
London	44-0-870-493-1433

Poland	
Warsaw	48-22-31-51-100

Russia	
Moscow	8-800-555-01-50
St. Petersburg	8-800-555-81-20

Czech Republic	
Ústí nad Orlicí	420-465-521-020

Ireland	
Oranmore	353-91-792444

Americas

North America	
Toll Free	1-888-576-9668
Cincinnati	1-513-742-8895
Milpitas	1-408-519-3898
Irvine	1-949-420-2500
Ottawa	1-815-434-8731

Brazil	
Toll Free	0800-770-5355
São Paulo	55-11-5592-5355

Mexico	
Toll Free	1-800-467-2415
Mexico City	52-55-6275-2727

ADVANTECH

Enabling an Intelligent Planet

www.advantech.com

Please verify specifications before ordering. This guide is intended for reference purposes only. All product specifications are subject to change without notice.

No part of this publication may be reproduced in any form or by any means, electronic, photocopying, recording or otherwise, without the prior written permission of the publisher.

All brand and product names are trademarks or registered trademarks of their respective companies. © Advantech Co., Ltd. 2016

8600000274