

Medical Grade Platform

Mobile Medical Cart

- ✓ Physician Rounds
- ✓ Bedside Documentation
- ✓ CPOE/ EMR/ EHR/ BCMA
- ✓ Emergency Room/ ICU
- ✓ Easy Transformation into Nursing Cart
- ✓ Easy Transformation into Medication Cart
- ✓ Easy Upgrade with Long-Lasting Battery



ADVANTECH

Digital
Healthcare

CE FC



www.advantech.com/digital-healthcare/

Going Mobile at Point-of-Care

Nurses and other healthcare professionals spend nearly 90% of their time moving from place to place as they provide care to patients, moving from nursing stations, to wards, to patient rooms. Currently most hospitals are struggling with makeshift carts, strapping desktop computers or laptops on board and rolling them from place to place. However, usually these carts with wires tie-wrapped or wound about legs, have issues with cleaning, power and working space. They just aren't designed to do what healthcare workers need.

To enhance the patient care process and ease the demanding jobs of clinicians requires technologies that are accurate, reliable, highly mobile and cost-effective. Mobile Point-of-Care systems are designed to move with busy healthcare professionals. They use wireless infrastructure, mobile devices and specialized applications to meet the needs of caregivers.

A highly integrated computerized nursing cart to optimize the patient care process and enable mobile point-of-care.

Advantech used its resources to design a solution that is sure to become a nurse's new best friend. In fact, the solution is so friendly that this new digital healthcare computerized nursing cart has been dubbed: AMiS (as in the French word for "friends"), the Advantech Medical Intelligent Station.

AMiS features a seamless design which is completely integrated into the station. There are no external cables, but there are a variety of recessed I/O connectors. This design offers maximum flexibility for healthcare personnel, and ease of use and cleaning for the hospital environment.



Specifications



AMiS-60



AMiS-50



AMiS-30

Base Cart		AMiS-60	AMiS-50
Model Name		AMiS-60	AMiS-50
Footprint		24.7" x 20.5" (627 x 520 mm)	19.7" x 18.5" (500 x 470 mm)
Casters		100 mm x 100 mm (2 front-locking)	125 mm x 125 mm (2 front-locking)
Work Surface		18.5" x 19.3" (469.9 x 489.9 mm) Weight Capacity: (Based on std. 400N) Gas Spring: Up to 17.6 lb/8 kg	18.5" x 19.3" (469.9 x 489.9 mm) Weight Capacity: (Based on std. 400N) Motor: Up to 88 lb/40 kg Gas Spring: Up to 17.6 lb/8 kg (Optional)
Height Adjustment Range		31.3" ~ 45.1" (795 ~ 1145 mm)	32.0" ~ 45.8" (813 ~ 1163 mm)
Dashboard		Battery Power Button Computer Power Button LED for Battery Capacity Indication	Battery Power Button Computer Power Button LED for Battery Capacity Indication Height Control Buttons
Cart Weight		121 lb / 55 kg w/o Display, Computer and Power Module	99 lb / 45 kg w/o Display, Computer and Power Module
Display Holder		Standard VESA Mount (VESA 75/75; VESA 100/100)	
Keyboard & Mouse Area		Up to 14.9" x 5.5" x 1" (380 x 140 x 25 mm)	
I/O Ports		USB 2.0 ports x 4, Gigabit Ethernet Interface (RJ-45) x 1	
Certifications		IEC 60601-1, CE, FCC	

Embedded Computing System

CPU	Intel® Core™ i7 Sandy Bridge 1.5 GHz	Intel® Core™ i5 Haswell 1.9 GHz	Intel® Celeron™ Haswell 1.6 GHz	Intel® Atom™ D525 1.8 GHz
Memory	2 GB DDR3 SODIMM max.16GB	4GB DDR3L SO-DIMM max.16GBx2	2GB DDR3L SO-DIMM max.8GBx2	2 GB DDR3 SODIMM max.4GB
Storage	2.5" SATA HDD 500 GB 2.5" SSD 16/32/64 GB (Optional)	2.5" SATA HDD 500 GB	2.5" SATA HDD 500 GB	2.5" SATA HDD 500 GB 2.5" SSD 16/32/64 GB (Optional)
Box PC I/O Ports	DVix1 (VGA: 2048x1536; DVI-I:1920x1200) Ethernetx2 (Isolated, 10/100/1000Mbps) USB x 3 (USB 2.0) Audio x 1 (line-out) RS232 x 2 DC Jack x 1 (4 pin)	DP/HDMI x 1 DP++ x 1 Ethernet x 2 COM x1 USB x 4 (USB 3.0) Audio x 3 2 single audio jack for Line-Out (green), Mic-in (Red) DC Jack x 1	DP/HDMI x 1 DP++ x 1 Ethernet x 2 COM x1 USB x 4 (USB 3.0) Audio x 3 2 single audio jack for Line-Out (green), Mic-in (Red) DC Jack x 1	VGA x 1 (2048 x 1536 @ 60Hz) DVI x 1 (1600 x 1200 @ 60Hz) Ethernet x 2 (10/100/1000Mbps) USB x 4 (USB 2.0) Audio x 3 (MIC-in, Lineout, Line-in) RS232 x 2 (1 of RS-232, 1 of RS-232/422/485) DC Jack x 1
WLAN	802.11 a/b/g/n			
Operating System (Optional)	Support Microsoft XP Professional, Windows 7	Support Microsoft XP Professional, Windows 7	Support Microsoft XP Professional, Windows 7	Supports Microsoft XP Professional, XP Embedded, Vista, Windows 7

Medical Display (Optional)

Size & Type	21.5" LCD
-------------	-----------

Battery Management Software

AMiS_Link	Battery Capacity Indicator Alerts (battery capacity, temperature, warning) Battery Lifecycle Statistics Report & Log File Client Installation Server Installation (Optional) Multi-language Support, Including Chinese Traditional, Chinese Simplified, English, German and Dutch
-----------	---

Power Module

Capacity	420Wh
Power Input	100 ~ 240 Vac, 50 ~ 60 H, Max 4.5A
Battery Type	Lithium-Iron Phosphate
Battery Charge Time	< 3hr. DOD 100%
Battery Runtime	8 ~ 10 Hours
Certifications	IEC 60601-1, CE, FCC Class B, Medical CB, CCC

* Optional IPS-M210 is available for AMiS-50/AMiS-60

Base Cart		AMiS-30
Model Name		AMiS-30
Install NB size		Laptop Size < 15" Display part: < 383 x 12 mm Laptop Thickness: < 55 mm
Work Surface		471.6 x 413.2 mm
Lift Structure		Gas Spring (Loading Capacity: 280N: Extra 4 kg; 400N: Extra 16 kg)
Security		Table Key Lock
Keyboard Area		434 x 146 x 30 mm
Footprint		19.7" x 18.5" (500 mm x 470 mm)
Casters		125 mm x 125 mm (2 front-locking)
Height Adjustment Range		811 ~ 1161 mm
I/O Ports		Extend USB 2.0 Port x 1
Cart Weight		38 kg
Extended Accessories Where Used		Work Surface: DIN Rail (Right and Left) Under Top Base: Medication Box (Optional)

Power Module (Optional)

IPS-M420	
Capacity	420Wh
Power Input	100 ~ 240 Vac, 50 ~ 60 H, Max 4.5A
Battery Type	Lithium-Iron Phosphate
Battery Charge Time	< 3hr. DOD 100%
Battery Runtime	8 ~ 10 Hours
Certifications	IEC 60601-1, CE, FCC Class B, Medical CB, CCC

IPS-M210

Capacity	210Wh
Power Input	100 ~ 240 Vac, 50 ~ 60 H, Max 4.5A
Battery Type	Lithium-Iron Phosphate
Battery Charge Time	< 1.5hr. DOD 100%
Battery Runtime	4 ~ 5 Hours
Certifications	US60950-1, EN60950-1, CE, FCC Class B, CCC

Going Mobile at Point of Care

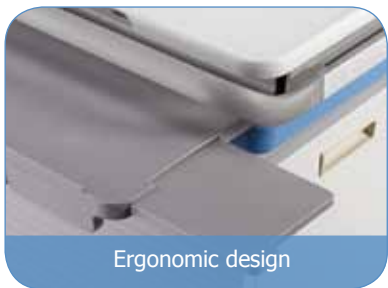
AMiS is a highly integrated computerized nursing cart with computer inside. This unit optimizes the patient care process by providing a mobile point-of-care station seamlessly integrated into a first-class medical nursing cart.



Large working space



Great flexibility with modular design



Ergonomic design



Adjustable table height



Designed for safety



Easy battery replacement



Mobile Nursing Care



Ergonomic Design for Ease of Use and Maintenance

AMiS is designed for comfortable, stress-free use even on extended work shifts. It has front and rear handles with grips that make it easy to move; a smartly-designed work area, with a keyboard/mouse tray; adjustable height to minimize stress, either by motor-driven control (AMiS-50) or gas spring (AMiS-60); and an intuitive "dashboard" that shows power status and battery consumption, including height control buttons (AMiS-50 only).



Great Flexibility with Modular Design

AMiS is cost-effective, offering an intelligent upgrade path, flexibility and customization, all which makes it an attractive long-term solution for hospitals and clinics. Use of a DIN rail for accessories prevents damage to the frame. The work surface height adjusts from seated to standing and the onboard PC is easily upgradeable, with multiple I/O connections for integration with peripherals. Applications: Monitoring, CIS, HIS, PACS, and more.



Designed for Safety/ Reliability/ Infection Control

AMiS features a seamless design that allows hospital personnel to keep the station clean, meeting hospital standards and preventing the spread of infection. AMiS is designed to meet medical safety certifications. There are no sharp edges, and all components are built to minimize risk of pinched fingers or stubbed toes. AMiS is rugged, with the same trusted industrial design built into all Advantech products.



Long-lasting Battery

AMiS products feature built-in, long-lasting power supplies which utilize up-to-date LiFePO₄ battery technology (Lithium-Iron Phosphate; LFP). This provides a high-performance, cost-effective solution for upgrading power on mobile computer carts in healthcare environments. The battery is easy to replace (only 7 screws on the cart), and can be remotely managed with AMiS_Link software. Power that is simple, easy, fast, and gets the job done!



Computer Embedded

AMiS is a computerized medical cart built with a mini-ITX motherboard inside; this distinguishes AMiS from other carts which are stacked with desktop computers or laptops on board. This integration feature allows customers to flexibly and easily upgrade computing performance and minimizes the total cost of ownership.



**Advanced design in a
Medicine Cart**



**Safe, reliable technology
with Medication Cart**



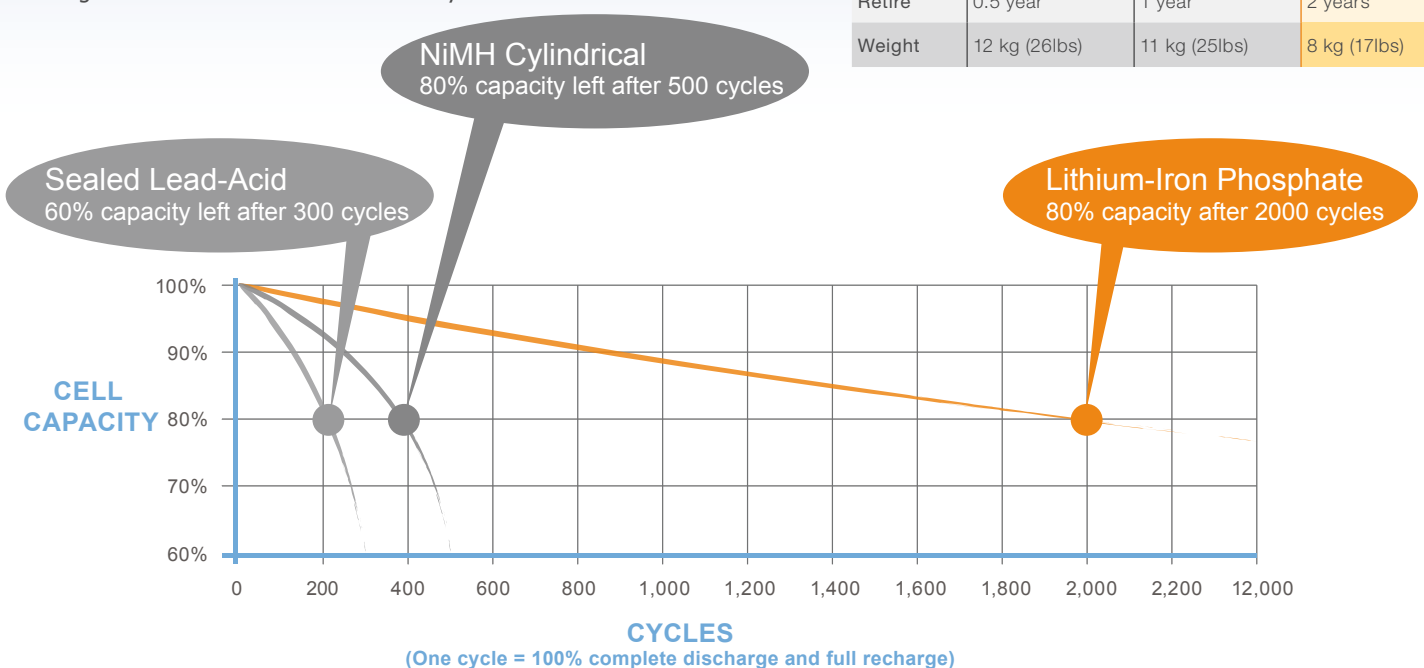
**Works beautifully as a
Documentation Cart**

LiFePO₄ Battery Technology

LFP Battery Versus NiMH Battery & SLA Battery

LiFePO₄ is a kind of Li-ion rechargeable battery for high power applications on medical carts. LFP cells feature high discharging current, and a non-explosive, long-cycle lifespan. The table and chart below show the superior low cost, safety, heat stability and discharge characteristics of a LiFePO₄ Battery.

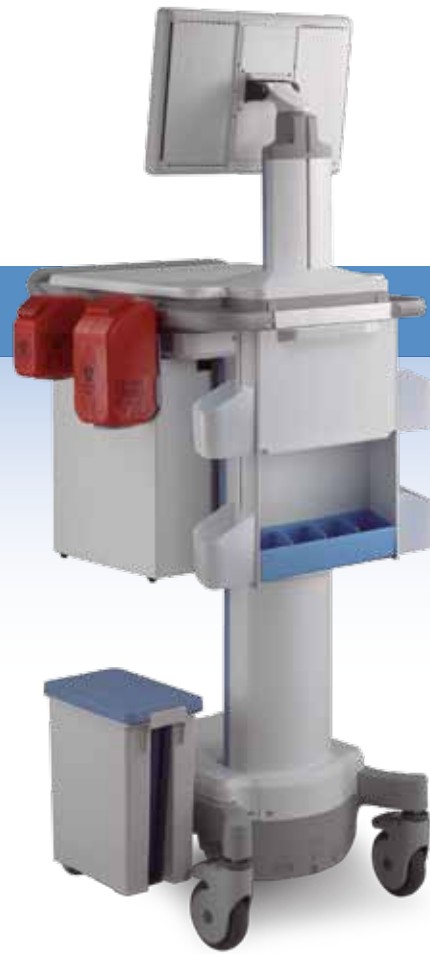
	Sealed Lead Acid (SLA)	NiMH Cylindrical (NiMH)	Lithium-Iron Phosphate(LFP)
Amp Hours	26AH	26AH	26AH
Cycle Life	<300, 60%	<500, 80%	>2000, 80%
Retire	0.5 year	1 year	2 years
Weight	12 kg (26lbs)	11 kg (25lbs)	8 kg (17lbs)



Flexible Transformation

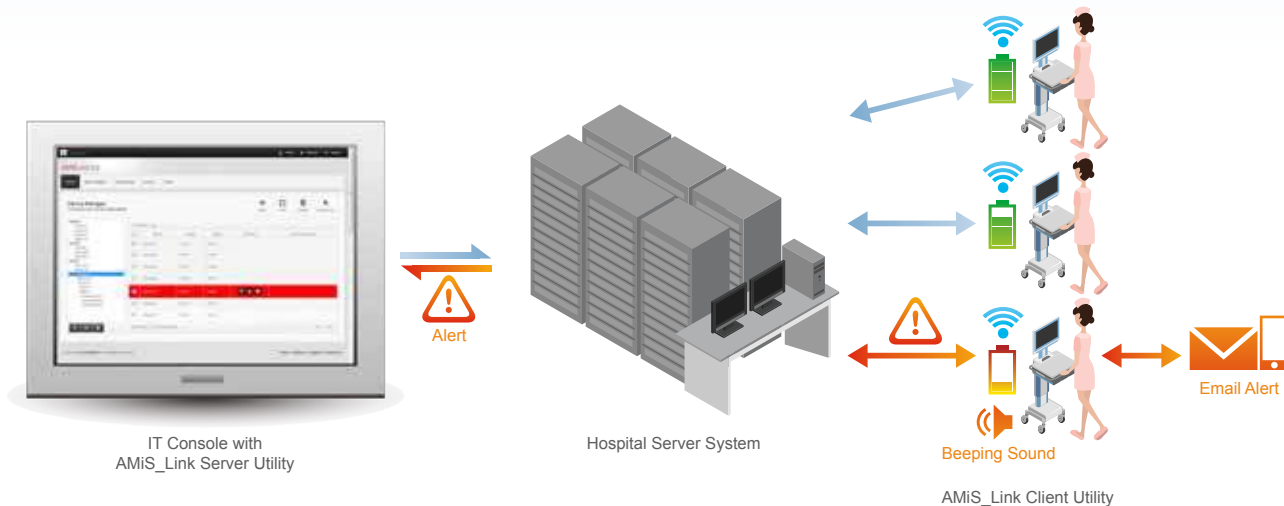
Tailor-Made Design & Easy Upgrade Path

Adding additional medical gear or accessories to AMiS is easy. It's equipped with standard DIN rails, so it adapts to the demands of different medical needs. A great example is its convertibility into an advanced medicine cart enabling digital medication management in a safe and secure way. A medication storage box puts your dispensary on wheels, making it easy to administer the right dose, in the right place, to the right patient. A motorized adjustable table height allows AMiS to easily convert into a nursing workstation. Add intelligent technology to your hospital and transform your environment now with the power of AMiS.



AMiS_Link

Intelligence is built into AMiS via specially designed battery management software. AMiS_Link is an application that provides software management choices and settings for hospital IT and medical staff. AMiS can be programmed to trigger alerts and send email notifications when battery discharge levels reach a critical level. Alarms, alerts and remote monitoring make it possible for IT staff to keep track of AMiS units throughout the hospital. Friendly design, with large, easy to read icons help clinicians improve the accuracy of data entry. The system features Windows® operating systems (including Windows 2000, XPe, XP, 7, and Windows Server 2003) and language support options in Chinese (Traditional and Simplified), English, German or Dutch.



Regional Service & Customization Centers

China

Kunshan
86-512-5777-5666

Taiwan

Taipei
886-2-2692-6076

Netherlands

Eindhoven
31-40-267-7000

Poland

Warsaw
48-22-33-23-730

USA

Milpitas, CA
1-408-519-3800

Worldwide Offices

Greater China

China

Toll Free	800-810-0345
Beijing	86-10-6298-4346
Shanghai	86-21-3632-1616
Shenzhen	86-755-8212-4222
Chengdu	86-28-8545-0198
Hong Kong	852-2720-5118

Taiwan

Toll Free	0800-777-111
Neihu	886-2-2792-7818
Xindian	886-2-2218-4567
Taichung	886-4-2378-6250
Kaohsiung	886-7-229-3600

Asia Pacific

Japan

Toll Free	0800-500-1055
Tokyo	81-3-6802-1021
Osaka	81-6-6267-1887

Korea

Toll Free	080-363-9494
Seoul	82-2-3663-9494

Singapore

Singapore	65-6442-1000
-----------	--------------

Malaysia

Toll Free	1800-88-1809
Kuala Lumpur	60-3-7725-4188
Penang	60-4-537-9188

Thailand

Bangkok	66-2-248-3140
---------	---------------

India

Toll Free	1800-425-5070
Bangalore	91-80-2545-0206

Indonesia

Jakarta	62-21-769-0525
---------	----------------

Australia

Toll Free	1300-308-531
Melbourne	61-3-9797-0100
Sydney	61-2-9476-9300

Europe

Toll Free	00800-2426-8081
-----------	-----------------

Germany

Munich	49-89-12599-0
Düsseldorf	49-2103-97-855-0

France

Paris	33-1-4119-4666
-------	----------------

Italy

Milano	39-02-9544-961
--------	----------------

Benelux & Nordics

Breda	31-76-5233100
-------	---------------

UK

Reading	44-0118-929-4540
---------	------------------

Poland

Warsaw	48-22-33-23-740 / 41
--------	----------------------

Russia

Toll Free	8-800-555-01-50
Moscow	7-495-232-1692

Americas

North America

Toll Free	1-888-576-9668
Irvine, CA	1-949-420-2500
Milpitas, CA	1-408-519-3898
Cincinnati	1-513-742-8895

Brazil

Toll Free	0800-770-5355
Saude-São Paulo	55-11-5592-5355

Mexico

Toll Free	1-800-467-2415
Mexico City	52-55-6275-2777

ADVANTECH

Enabling an Intelligent Planet

www.advantech.com

Please verify specifications before quoting. This guide is intended for reference purposes only. All product specifications are subject to change without notice.

No part of this publication may be reproduced in any form or by any means, electronic, photocopying, recording or otherwise, without prior written permission of the publisher.

All brand and product names are trademarks or registered trademarks of their respective companies. © Advantech Co., Ltd. 2013

860000047