

**Energy &
Environment**

**Solution
Ready
Package**

City Information Modelling & Monitoring Solution

Environmental Quality Monitoring Cloud
for Smart Cities

SRP-CIM400



- Link public data to real-time monitoring for accurate and timely information
- Support a wide range of infrastructure applications for deployment in building smart cities
- Achieve comprehensive decision-making with environmental and economic big data analysis



ADVANTECH

Enabling an Intelligent Planet



www.advantech.com/srp/EQMS

POWERED BY

ADVANTECH

WISE-PaaS

Feature Highlights

Innovation Solutions Improve the Efficiency of Smart City Management

3D city modelling of urban infrastructure facilitates smart city management, optimizing the entire urban planning process.

Enhanced Flexibility for Extended Application

Customizability allows for further innovation to meet future requirements.

Minimize Risk for Efficient Management

Enhance risk management with city visualization, simulation, monitoring, and analysis.

Application Stories

Efficient Energy Solutions for Industrial Science Parks

- Provided innovative development modelling technology with big data support to minimize energy consumption
- Improved energy management by integrating power consumption data across multiples buildings and facilities
- Through a unified information platform, the park was able to monitor energy usage in real-time and quickly take strategic action



Urban Infrastructure Facilities Management

- Remote monitoring for major infrastructure operations and real-time status updating for improved efficiency
- CityCIM platform supports digital city operations, updated status, and data analysis
- Built an advanced core system, planned an infrastructure-intensive construction for improved overall efficiency, and avoided duplication of investment and blind construction

Air Pollution Control Management Attained High Air Quality Standards

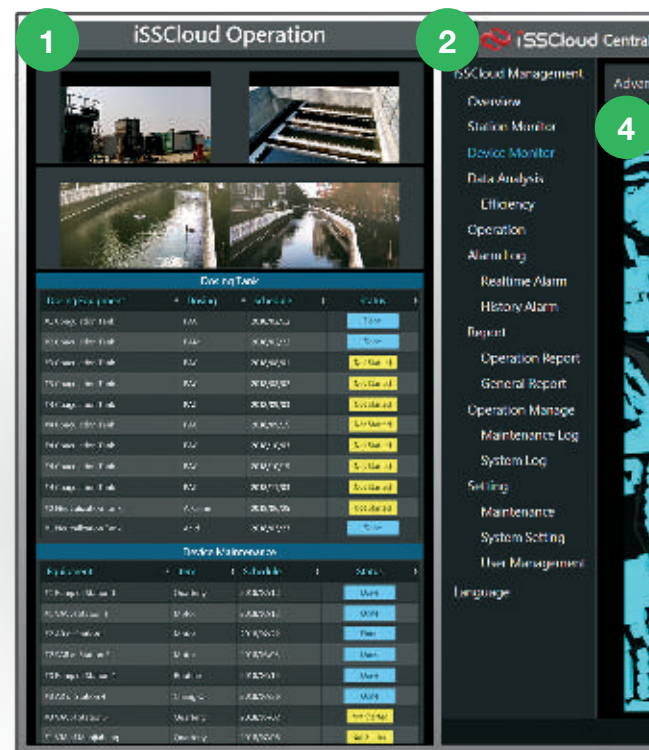
- Built a cluster monitoring network with miniaturized atmospheric environment monitoring devices and grid-intensive layout
- Tracked air quality, pollution emissions, and road traffic emissions for building an accurate and rapid regulatory system to strictly reduce air pollution
- Made data analysis more efficient and accurate through visualization of ambient air quality monitoring



System Introduction

Advantech's city modelling and monitoring solutions are centered around digital data management. Through the CityCIM platform and IIoT sensing hardware, our solutions generate multi-dimensional data drawing from people, objects, space, and events in the physical world. Our data platform performs data integration and accurate mapping for efficient smart city construction and development.

WISE-PaaS/Dashboard

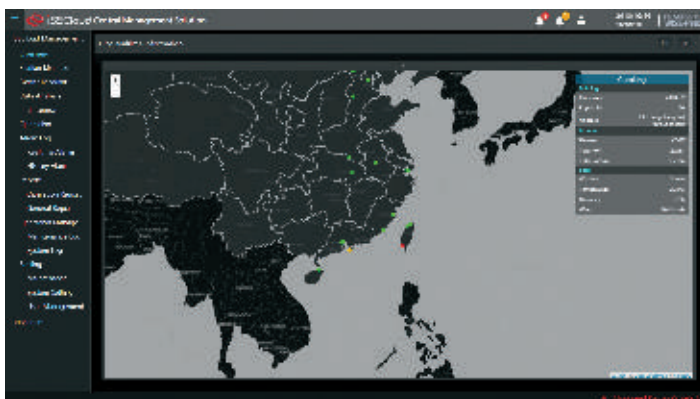


1 Focal Point: Operation Status

- Real-time remote IP Camera of key region
- Schedule and progress status
- Maintenance management schedule and status

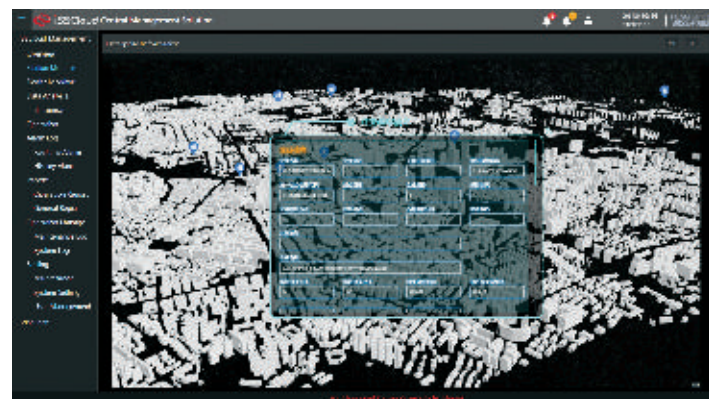
2 Focal Point: Maintenance Management

- Maintenance management schedule and status



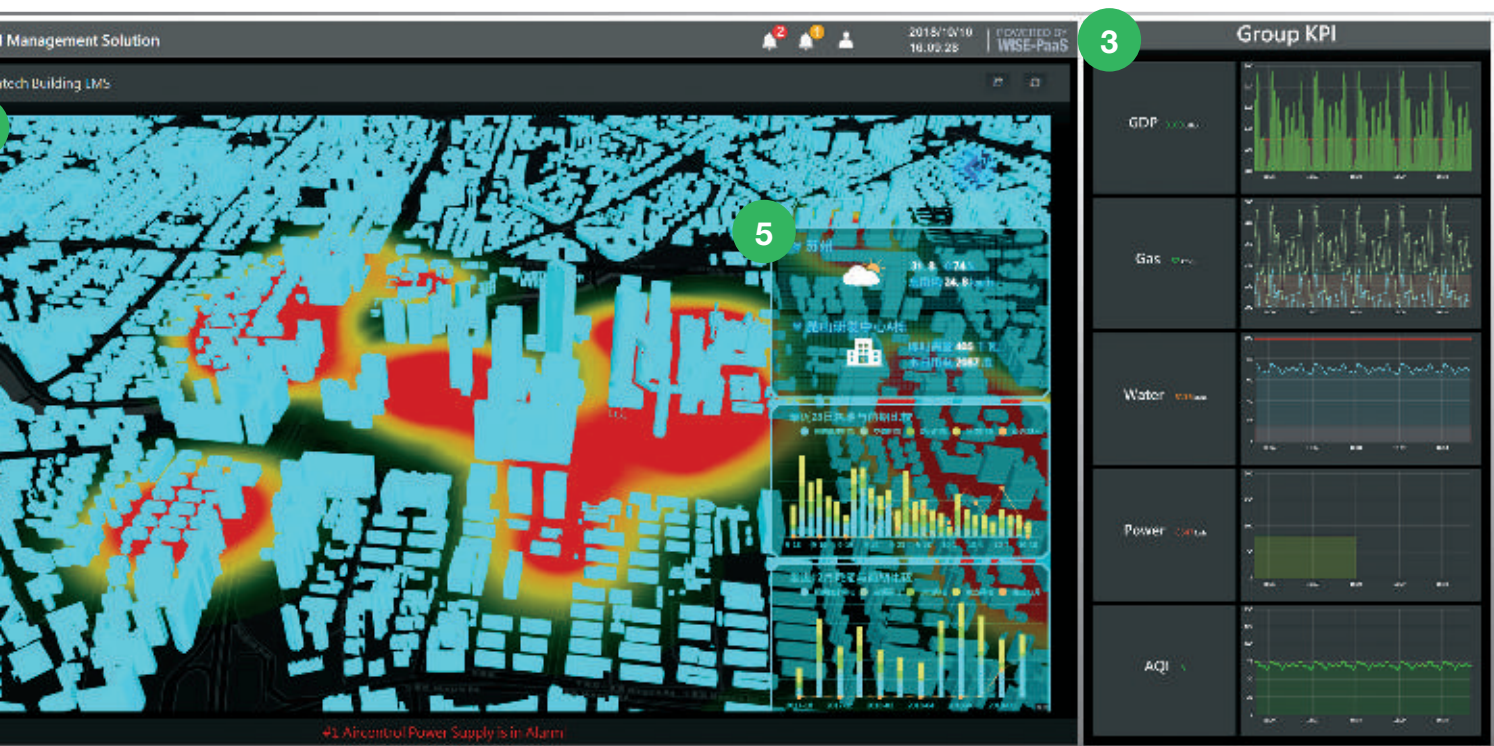
City Information Modelling and Monitoring Solution Home Page

- Geographical distribution map and operation status by color
- Current status overview of specific region



City Information

- Enterprise basic information
- Daily conversion efficiency trend
- Alarm management



Interactive Dashboard for City Information Modelling and Monitoring Solution

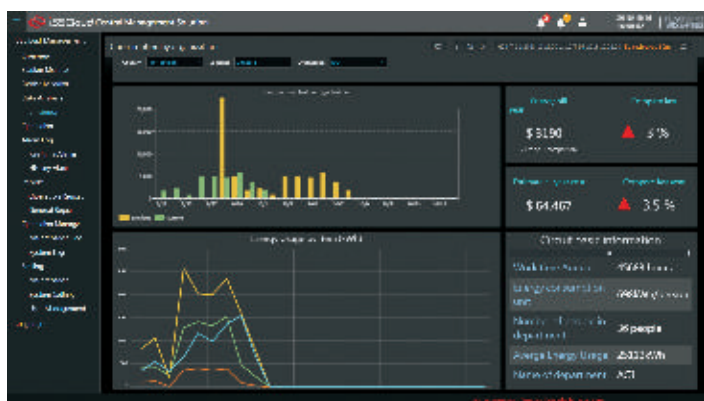
Main menu for quick access to key dashboard functions

3 Management Scorecard

- Performance index for key monitoring environmental daily usage rate

4 3D City Modelling with Real-time Display

5 Overview of Current Status of Individual Building



Energy Consumption and Data Analysis

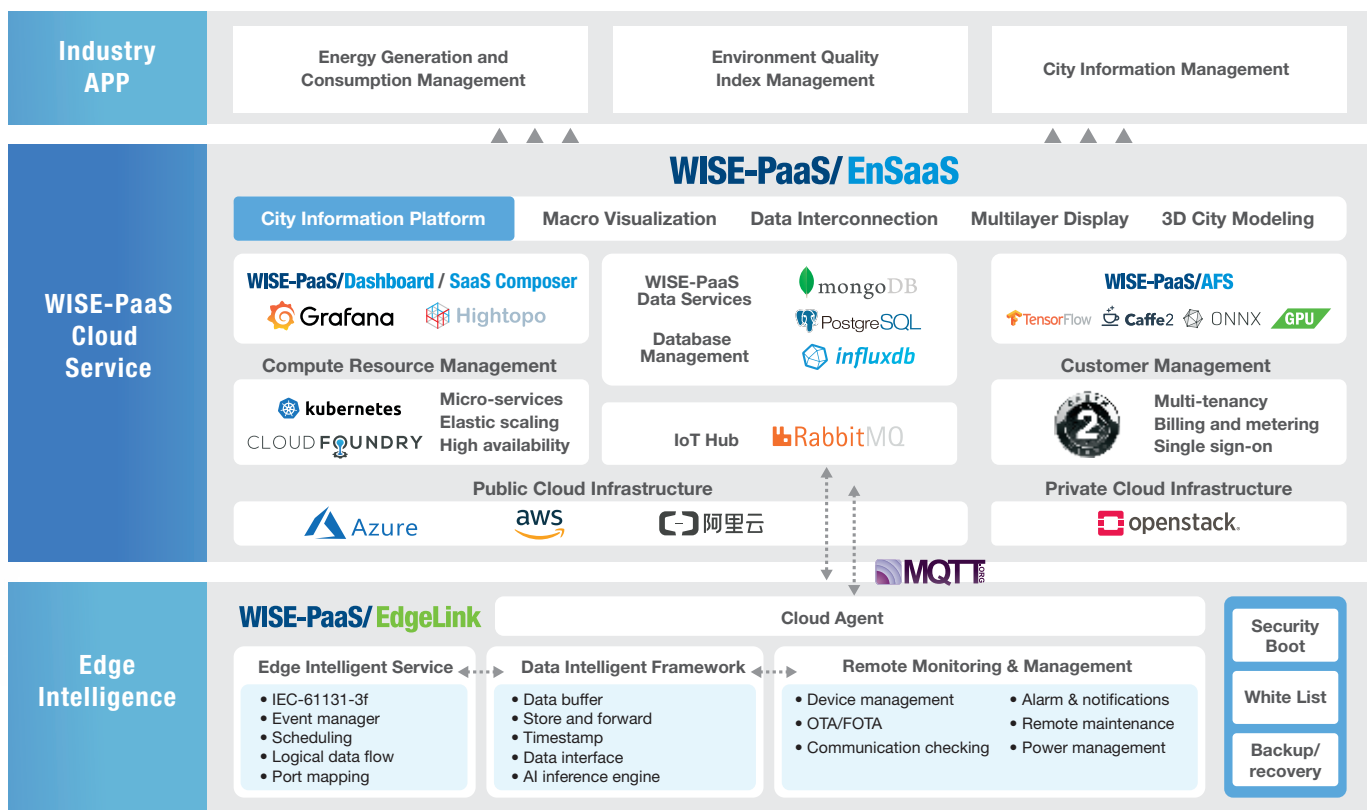
- Comparison chart by timeline and facility equipment
- Bill and cost comparison vs. previous year
- City level energy data analysis



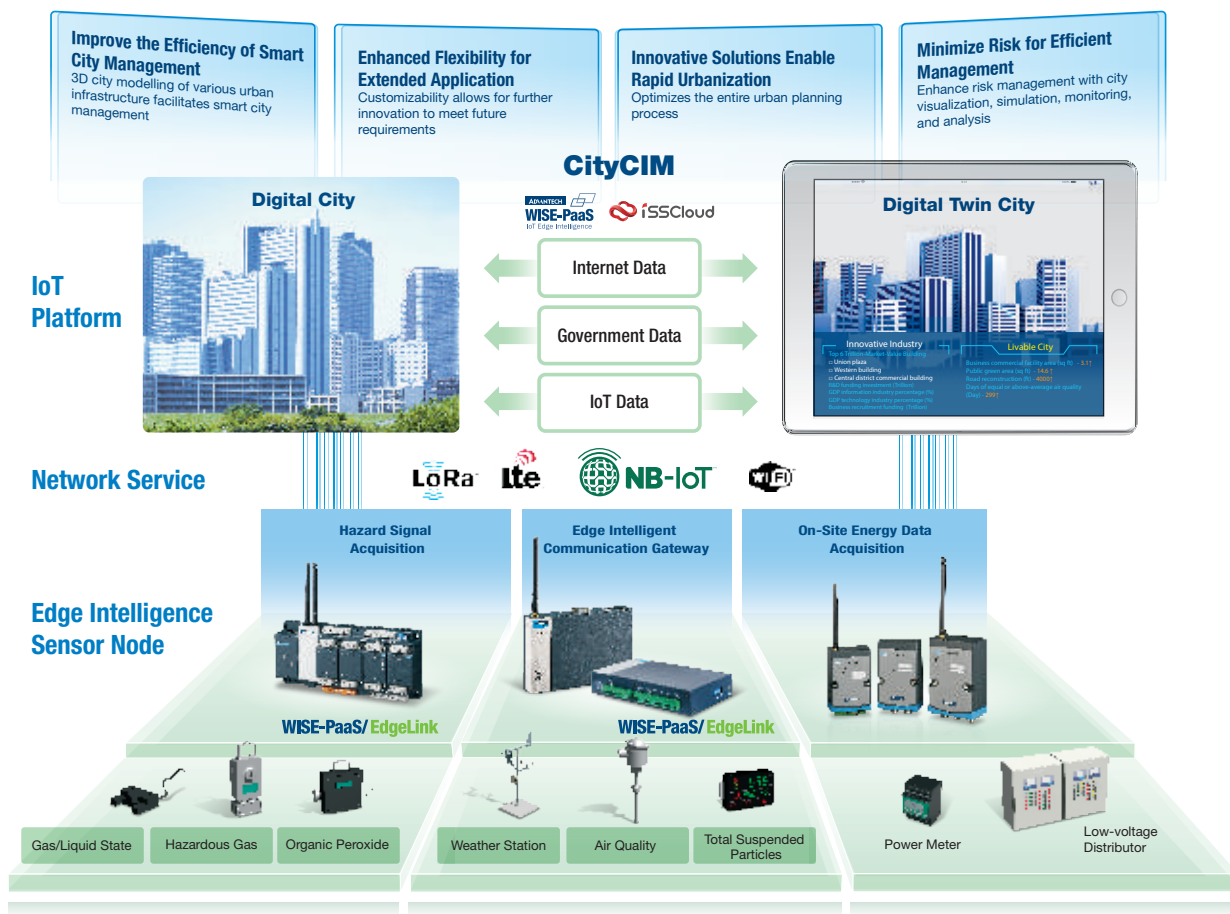
Facility Operation Analysis

- Equipment Abnormal Analysis
- Maintenance Schedule and status report

Software Diagram



System Diagram



Ordering Information

Solution Package		
WISE-PaaS Situation Room SRP-SR-100-BTO	LCD Wall: 1 x 86" + 2 x 55" Server and Display: 1 x DS-980 Control Panel: 1 x UTC-520 1 x WISE-PaaS/SignageCMS	
WISE-PaaS VIP Membership 98DPWAP2K	WISE Point: 2,000 points	
SRP-CIM011 Hazard Signal Acquisition	ADAM-3600 x 1	
SRP-CIM410 Edge Intelligent Communication Gateway	ECU-1152 x 1 WISE-PaaS/EdgeLink	
SRP-CIM411 On-Site Energy Data Acquisition	WISE-4671 x 1 WISE-4471 x 1	
Optional Purchase		
IoT.SENSE Training	Basic Training	2 days
	Advanced Training	1 day
IoT.SENSE Consulting	IoT Solution and On-Site Technical Support	3 days

Advantech Headquarters

No. 1, Alley 20, Lane 26, Rueiguang Road, Neihu District, Taipei, Taiwan 11491
Tel: 886-2-2792-7818 Fax: 886-2-2794-7301
www.advantech.com

ADVANTECH

Enabling an Intelligent Planet

US/Canada: 1-888-576-9668
Europe: 00800-2426-8080/8081
Netherlands: 31-40-267-7000
China: 800-810-0345

Taiwan: 0800-777-111
Japan: 0800-500-1055
Korea: 080-363-9494
Other countries: 0800-777-111



www.advantech.com.tw/contact