



# UPOS-520 Series

## Efficient and Customizable POS Solution for Diverse Applications



To support demands for industrial-grade POS solutions with high installation flexibility, Advantech developed its UPOS-520 series. UPOS-520 features a customizable cover that can be equipped with unique corporate branding and logos for easy integration with existing decor. The fanless and modularized system design ensures noiseless operation, easy maintenance, and convenient expansion, making UPOS-520 suitable for diverse applications in a wide range of retail and hospitality environments.



**Customizable Logo for Enhanced  
Brand Awareness**



**Modularized Monitor and  
Peripherals Ensure Convenient Use  
and Maintenance**



**Low-Power Design Reduces  
Energy Costs**

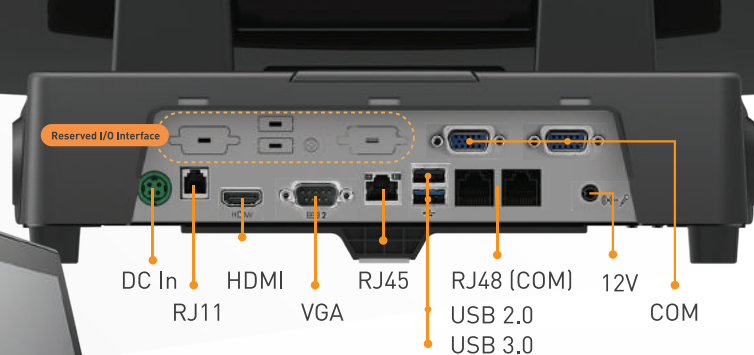
UPOS-520 is a functional POS system that can be easily integrated with the existing décor of any installation space. The customizable cover provides the ultimate flexibility for incorporating corporate branding and logos in order to strengthen brand identity and increase brand awareness.

The modularized design of the UPOS-520 ensures flexible use and convenient maintenance. The system monitor can be used as a secondary display for enhancing customer engagement and product promotions. Additionally, UPOS-520 can be integrated with various modular peripherals to support diverse applications in the retail and hospitality industries.

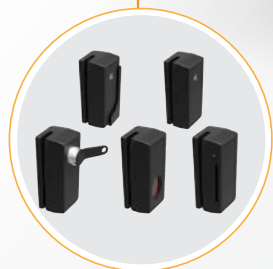
UPOS-520 is an innovative and environmentally friendly POS solution. The system's low-power design enables customers to save money and protect the environment by reducing overall energy consumption without sacrifices in features or performance.



IP65-Rated Front Panel Protection



Support 10.1"/15" Customer Display



Diverse Peripherals

## UPOS-520D with Intel® Celeron® J1900 processor

System	CPU	Intel® Celeron® J1900 processor
	Memory	SODIMM x 1 (Maximum up to 8GB)
Storage	HDD	1 x 2.5" SATA2 HDD/SSD bay
	SATA	SATA II (3.0Gb/S)
	Expansions	1 x Full-size mini PCIe (for mSATA/Wi-Fi/BT)
Display	Resolution	15" TFT LCD (1024 x 768) with LED backlight
	Brightness	250 cd/m <sup>2</sup>
	Touch Screen	P-Cap Touch (Controller on Touch Board)
External I/O	Serial Port	4 x COM (2 x RJ48 at 5V/12V via internal jumper; 2 x D-sub connector at 5V/12V via internal jumper)
	USB Port	2 x USB 2.0 at front 4 x USB at rear (3 x USB 2.0, 1 x USB 3.0)
	Video Output	1 x VGA 1 (D-sub 15) 1 x DisplayPort (reserved for box PC)
	Speaker	2 x 2W speakers
	Ethernet	1 x RJ-45 Gigabit Ethernet (10/100/1000)
	Cash Drawer	1x RJ11 (12V Default /24V via internal switch jumper)
	DC In	4-pin power jack
	DC Out	12V 2-pin connector for 2nd display
	Power Button	Power Switch (LED indicator inside)
	Display Hatch (Top)	VGA+12 V for secondary display
	Display Hatch (Right)	PS/2 + USB
	Display Hatch (Left)	Reserved
Optional Modules	Adapter	60W
	Second Display	Supports 10.1" TFT LCD/VFD via display hatch (top) Supports 15" TFT LCD via rear pole mount
	Peripherals	<ul style="list-style-type: none"> <li>• MSR</li> <li>• MSR + iButton</li> <li>• MSR + Fingerprint</li> <li>• MSR + RFID</li> <li>• MSR + IC card</li> </ul>
	Connectivity	Wi-Fi (802.11 b/g/n), Bluetooth
Mechanical & Environmental	Case Color	Black/white/custom
	Operating Temperature	0 ~ 40° C (32 ~ 104° F)
	Humidity	10 ~ 95% @ 40° C non-condensing
	Certifications	CE/FCC
Software	OS Support	POSReady 7 / Win 10 IoT Enterprise