

Industrial Display Systems

A Leading Specialist for Display Technologies, Products and Solutions

- ✓ Leading Technology and Capability
- ✓ Product Offerings
- ✓ Design To Order Service
- ✓ Market Solutions
- ✓ Product Selection



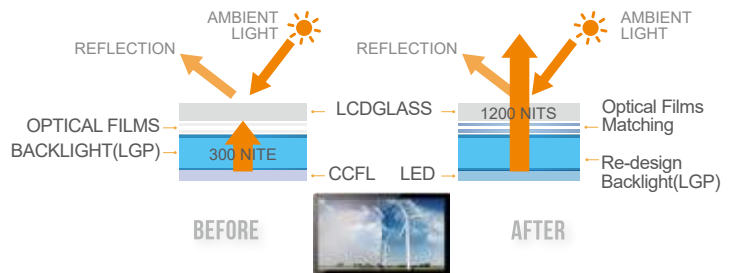
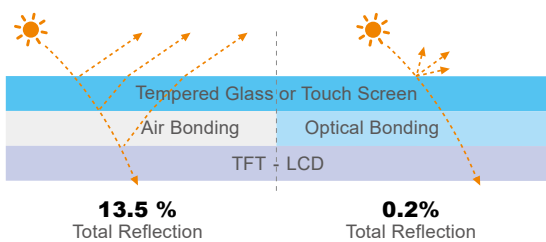
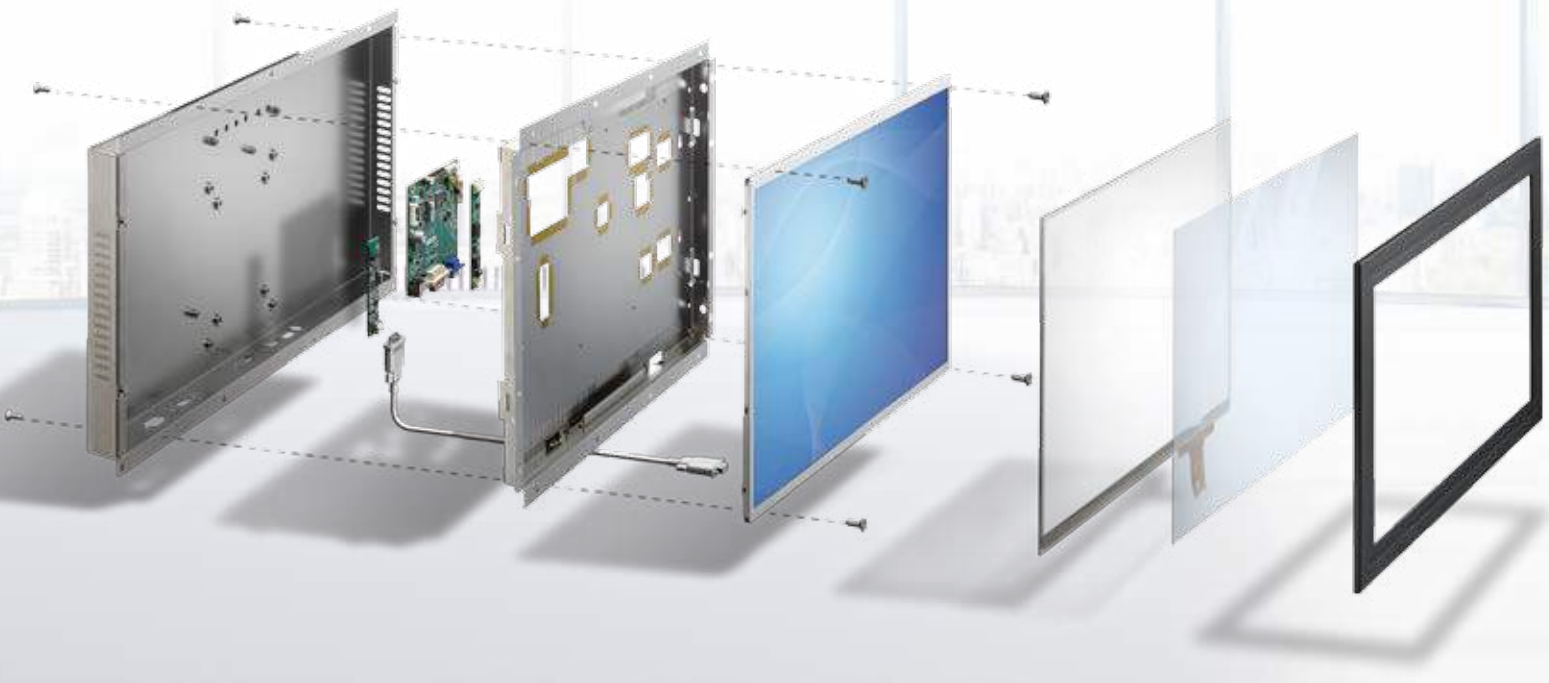
ADVANTECH

Enabling an Intelligent Planet

www.advantech.com

Advantech Industrial Display Systems

Advantech designs, develops and manufactures display systems that meet the demands of industrial display markets in gaming, transportation, medical, and many system integration markets globally. Combining proven technologies and flexible manufacturing, Advantech creates class leading solutions for your customers that deliver significant product differentiation and competitive advantage. Our customer-centric approach reinforces all of our activities and is an essential part of the thousands of products we ship daily.



Optical Bonding

Optical bonding technology is to inject optical glue into the space between a cover glass/ a touch screen and the LCD panel to enhance the readability and durability. Advantech develops both Wet Bond and Dry Bond technologies for customers' different needs using proprietary materials and process in house in Taiwan and USA.

High Brightness

To withstand strong ambient light in the external environment, high brightness solution is required. With in-house LED light bar design and optical films, our solution can boost brightness up to 2000 nits with a low-power backlight source saving about 20% less energy than competing products with the same level of brightness.

In-house Design and Manufacturing Capabilities

Advantech is committed to developing new industrial display technologies and has built class 1,000/10,000 LCD clean rooms with ISO certification to develop our own display technologies in Taiwan, China Kunshan and North America. With monthly capacities of 30,000 pieces and all capabilities in-house, we bring high add-on value, quality and reliability to our industrial display products.



Class 10,000 Clean-room



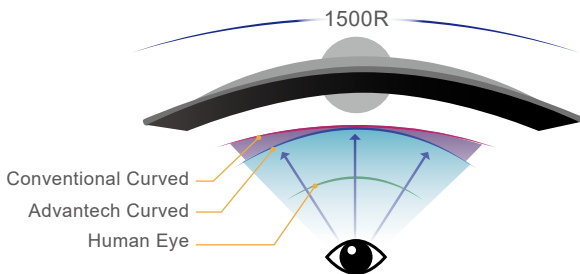
Professional Engineers



Value-added Services

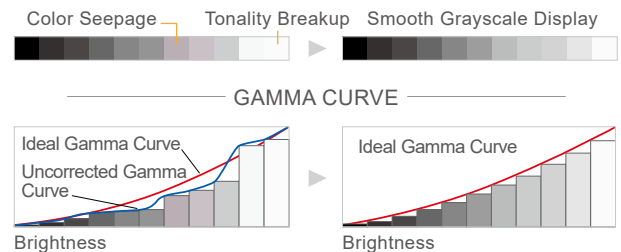


Assured Quality



Curved Display

Advantech curved display technology is available with a variety of radii of concave or convex surface such as 1500R or 1800R to create a comfortable and immersive viewing experience. Packaged together with an industrial grade video card and power supply, our solution is available with standard video inputs and can be specified with or without 10-point-touch overlay.



Medical Imaging

Medical imaging applications require highly consistent image reproduction. Our solutions cover panels, AD boards and open frame monitors with color management functions which help improve brightness stability, gray scale, color temperature and color gamut and are fully compliant with the DICOM standard.

Indoor/ Outdoor Industrial LCD Kits

IDK Series

Advantech Industrial Display Kit series provide LCD panels, outdoor LCD panels and touchscreen displays which support sunlight readable and resistive touch functions, and are proven to work with all Advantech embedded platforms.

Indoor Display Kits IDK-1000



- 5.7"~21.5" options
- Indoor applications
- LVDS signal interface

- Resistive and P-cap touch
- Wide viewing angle

Outdoor High Bright Display Kits IDK-2000



- 8.4"~21.5" options
- outdoor applications
- LVDS signal interface

- Resistive touch
- Wide viewing angle

Key Features



Proven Compatibility

All Advantech IDK series are tested to be compatible with all Advantech embedded boards with LVDS cables, ready VBIOS and touch driver support.



Enhanced Readability

IDK-2000 provides 1200 cd/m² brightness to withstand the ambient sunlight (normally 10,000 nits) and guarantees excellent visibility with low power consumption.



User-friendly Interface

IDK series is pre-integrated with touchscreen to deliver user-friendly interface with both single/multi touch options.

Open Frame/ Panel Mount/ IP65 Monitors

IDS Series

Advantech provides a comprehensive monitor solutions with different front frame chassis options. Customers can choose based on their integration needs. All the industrial grade monitors are featured with slim and light design for easy and efficient installations.



Open Frame Monitors IDS-3100



- 6.5"~21.5" options
- Integrated bracket
- Dual VGA/DVI interface
- P-cap/resistive/ non-touch options
- Rear/VESA mount

Panel Mount Monitors IDS-3200



- 6.5"~21.5" options
- Rugged metal front frame
- Dual VGA/DVI interface
- P-cap/resistive/ non-touch options
- Front/VESA mount

IP65 Monitors IDS-3300



- 15"~21.5" options
- IP65 rated front frame
- Dual VGA/DVI interface
- P-cap touchscreen
- Front/VESA mount

Key Features



Ultra-slim Design

Featuring an ultra-slim and compact profile, the Advantech IDS monitors measures 20% less than market average for easy integration



Flexible Mount

IDS-3000 series supports flexible rear/ front/ wall/ stand mount with VESA mounting interface standard.

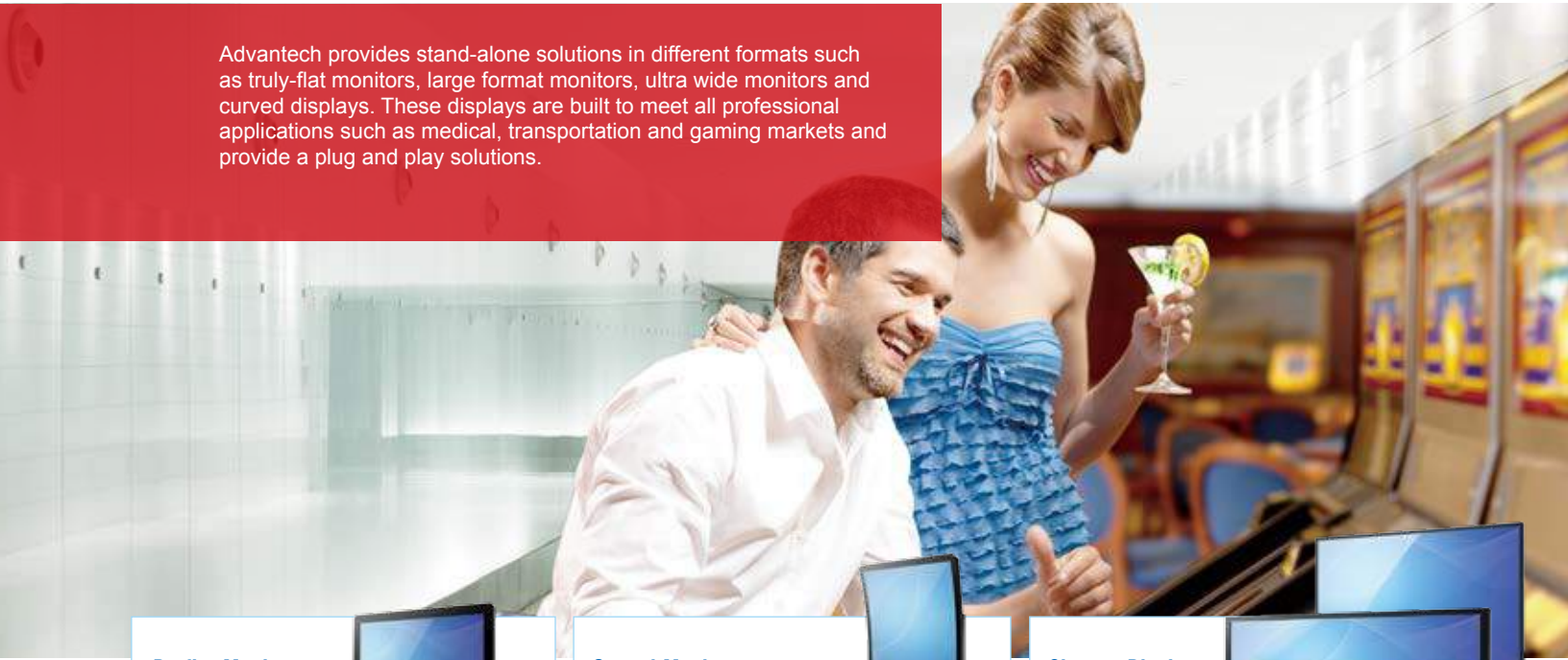


Dust/Humidity Protection(IP65)

IDS-3300 Series is designed with IP65 certified enclosures to ensure stable operation in harsh environments.

Proflat Monitors/ Digital Signage Displays/ Curved Displays

Advantech provides stand-alone solutions in different formats such as truly-flat monitors, large format monitors, ultra wide monitors and curved displays. These displays are built to meet all professional applications such as medical, transportation and gaming markets and provide a plug and play solutions.



Proflat Monitors IDP31



- 10.4", 19", 21.5" size options
- 100% flat glass front
- HDMI/VGA/DVI
- 2-10 multi-touch point options
- Stand/wall mount

Curved Monitors CRV31



- 35", 43", 55" size options with 1500R or 1800R options
- Wide viewing angle
- P-cap touch up to 10 multi-touch points
- HDMI/VGA/DisplayPort
- VESA mount

Signage Displays DSD-3000/ DSD-5000



- 28", 38", 42", 55" size options
- Fanless design
- Wide viewing angle
- DVI/VGA
- VES/wall mount

Key Features



Portrait & Landscape Modes

Our monitors enable you to display content in both portrait and landscape modes.



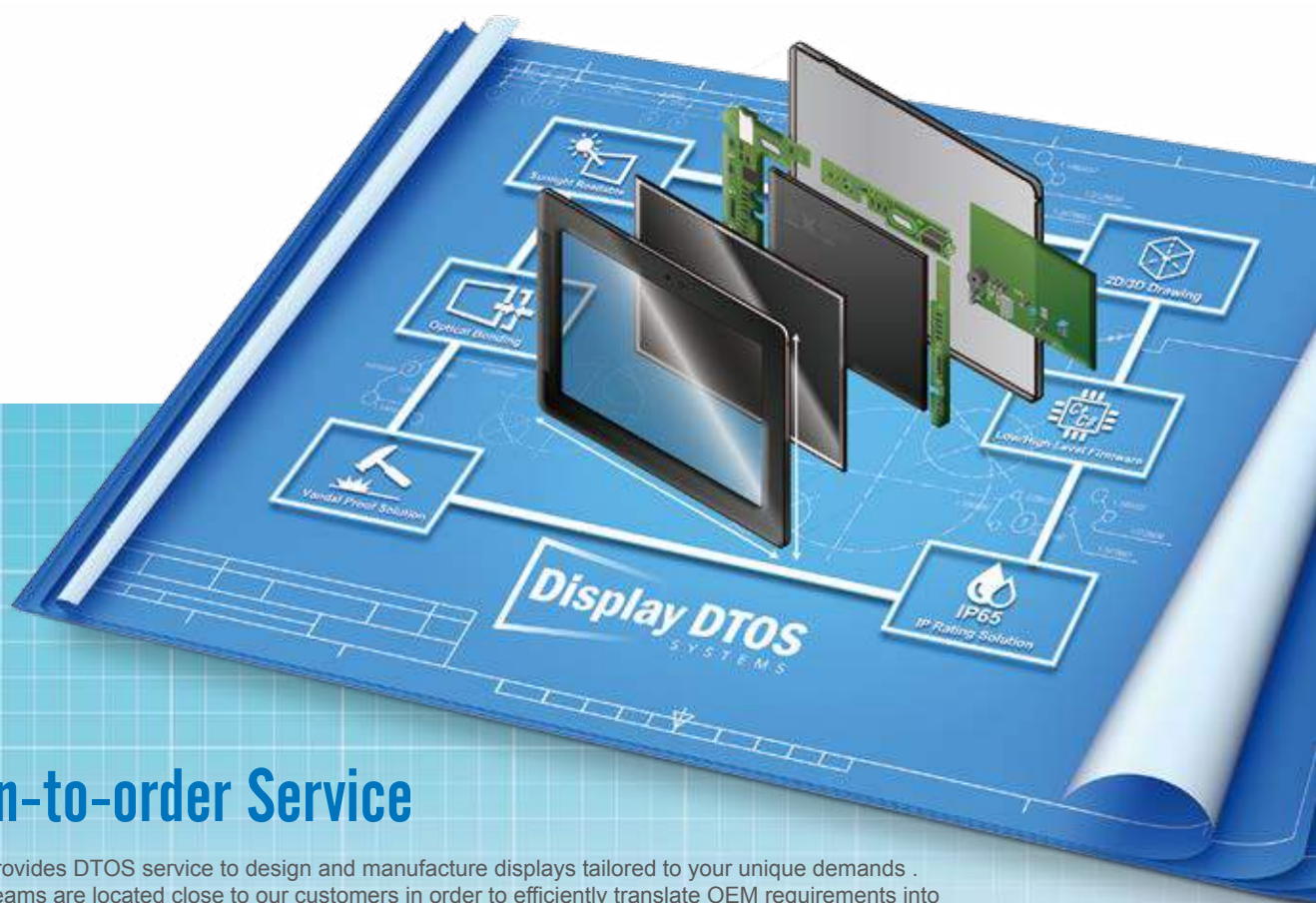
Super Wide Ratio

DSD-5000 series allows for maximize available space and dynamic scenarios with ultra wide ratio design.



Triptic™ Function Built-in

CRV31 series is built-in with Triptics which allows customers to define their user zones on CRV31 up to 3 inuts via HDMI without the need for changes to game software.



Design-to-order Service

Advantech provides DTOS service to design and manufacture displays tailored to your unique demands . Our design teams are located close to our customers in order to efficiently translate OEM requirements into cost effective, cleverly engineered solutions for all manner of environments.



Optical Engineering

- Backlight design
- Optical bonding
- Brightness enhancement
- Thermal control



Mechanical/ Material Engineering

- Chassis, glass, polymers, adhesives, light guides
- Open, Closed Frame, Proflat designs
- Panel cutting
- IP54/IP65 solution



System Integration Service

- X86/RISC computing
- Touchscreen/button integration
- BIOS customization

Key Applications

Our teams develop hundreds of new designs each year and are veterans of many demanding applications such as:



Transportation

- Industrial controls
- Medical / Pharmaceutical
- Point of Sale



Medical Ultrasonic

- Transportation (train, road, rail, etc)
- Vending machines



Drive Thru

- Gaming
- Digital Signage
- Outdoor Public Information



Vending Machine

- Ticketing
- Quick service restaurants (QSR)

Focused Applications

Outdoor Kiosk

Designed with ruggedness and longevity in mind, our outdoor display solutions provide an reliable alternative to off the shelf monitors. Built with our LCD optical enhancement solutions, wide temperature design, and robust touch input, our large range of sizes and configurations meets all demands in this area.



Applications:

Gas stations, bike rental systems, outdoor ATMs/ payment terminals, parking lots.

Suitable Solutions:

IDK-2000, IDS-3000 series, optical bonding, high brightness

Transportation

Nowadays, displays are ubiquitous in transportation applications. Advantech provides comprehensive display systems for transportation markets such as for rail, airport, marine, and busses. Transportation displays usually require specific features such as wide view angles, high brightness, wide temperature and ruggedness to fit into these diverse environments.



Applications:

Passenger information systems, train/marine control systems, taxi advertising screen, in-flight entertainment systems

Suitable Solutions:

IDS-3000 series, DSD-5000 series, optical bonding, high brightness

Gaming

Designed exclusively for gaming applications, our gaming display solutions provide a wide range of gaming monitors to meet the special requirements of applications. These display solutions feature widescreens, reliable touch screens and flexible mechanical designs that can be integrated with Advantech gaming platforms for a total gaming solution.



Applications:

Slot machine, Lottery terminals, Jackpot systems

Suitable Solutions:

Main display- CRV31-430WP70, IDS-3121GD, IDS-3119
Button deck / Player tracker- DSD-5000 series

Medical Imaging

Medical imaging applications require highly consistent image reproduction. Advantech provides sophisticated medical display solutions that can help improve performance and diagnostic accuracy. All of our displays are designed with IPS technology and is fully compliant with the DICOM standard for image communication and image file formats.



Applications:

Ultrasound, clinical and surgical

Suitable Solutions:

IDK-1115, IDS-3110, IDS-3121, optical bonding, medical AD board

Selection Guide

Industrial Display Kit IDK-1000 Series

	IDK-1105	IDK-1107W/ IDK-1107WP	IDK-1108	IDK-1110W	IDK-1110/ IDK-1110P	IDK-1112	IDK-1115/ IDK-1115P	IDK-1115P	IDK-1119	IDK-1121W
Size	5.7"	7"	8.4"	10.1"	10.4"	12.1"	15"	15"	19"	21.5"
Resolution	640 x 480, VGA	1024 x 600, WSVGA; 800 x 480 WVGA	800 x 600, SVGA	1024 x 600, WSVGA	800 x 600, SVGA/1024 x 768, XGA	800 x 600, SVGA	1024 x 768, XGA	1024 x 768, XGA	1280 x 1024, SXGA	1920 x 1080, FHD
Brightness	500 cd/m2	500 cd/m2	450 cd/m2	550 cd/m2	400 cd/m2/500 cd/m2	450 cd/m2	400 cd/m2	400 cd/m2	350 cd/m2	300 cd/m2
Viewing Angle (H/V°)	140/100	150/145; 140/120	160/140	120/140	160/140 / 176/176	160/140	160/140	160/140	170/160	178/178
Contrast Ratio	250 : 1	700 : 1; 600:1	600 : 1	500 : 1	700 : 1 / 1000:1	700 : 1	700 : 1	700 : 1	1000 : 1	5000 : 1
Touchscreen	4-Wire Resistive Touch	4-Wire Resistive Touch/ Projective Capacitive Touch	4-Wire Resistive Touch	4-Wire Resistive Touch	4-Wire Resistive Touch/ Projective Capacitive Touch	5-Wire Resistive Touch	5-Wire Resistive Touch/ Projective Capacitive Touch	Projective Capacitive Touch	5-Wire Resistive Touch	5-Wire Resistive Touch
Signal Interface	1 Channel LVDS	1 Channel LVDS	1 Channel LVDS	1 Channel LVDS	1 Channel LVDS	1 Channel LVDS	1 Channel LVDS	1 Channel LVDS	2 Channel LVDS	2 Channel LVDS
Backlight Life (hrs)	30000	50000	50000	50000	50000	50000	50000	50000	50000	50000
Durability	1 million touches	1 million touches / 100 million touches	1 million touches	1 million touches	1 million touches / 50 million touches	10 million touches	10 million touches/50 million touches	50 million touches	10 million touches	10 million touches
Operating Temperature	-20 ~ 70° C	-20 ~ 70° C	-10 ~ 60° C	-5 ~ 60° C	-10 ~ 60° C / -20 ~ 70° C	-20 ~ 70° C	-20 ~ 70° C	-20 ~ 70° C	0 ~ 50° C	0 ~ 60° C

High Brightness Display Kit IDK-2000 Series

	IDK-2108	IDK-2110	IDK-2112	IDK-2115	IDK-2117	IDK-2119	IDK-2121
Size	8.4"	10.4"	12.1"	15"	17"	19"	21.5"
Resolution	800 x 600, SVGA	800 x 600, SVGA/1024 x 768, XGA	800 x 600, SVGA	1024 x 768, XGA	1280 x 1024, SXGA	1280 x 1024, SXGA	1920 x 1080, FHD
Brightness	1200 cd/m2	1200 cd/m2 / 1300 cd/m2	1200 cd/m2	1200 cd/m2	1200 cd/m2	1200 cd/m2	1200 cd/m2
Viewing Angle (H/V°)	160/140	160/130 (SVGA) / 170/170 (XGA)	160/140	120/140	170/160	170/160	178/178
Contrast Ratio	600 : 1	500 : 1 / 700:1	700 : 1	700 : 1	1000 : 1	1100 : 1	5000 : 1
Touchscreen	4-Wire Resistive Touch	4-Wire Resistive Touch	5-Wire Resistive Touch	5-Wire Resistive Touch	5-Wire Resistive Touch	5-Wire Resistive Touch	5-Wire Resistive Touch
Signal Interface	1 Channel LVDS	1 Channel LVDS	1 Channel LVDS	1 Channel LVDS	2 Channel LVDS	2 Channel LVDS	2 Channel LVDS
Backlight Life (hrs)	50000	50000 / 70000	50000	50000	50000	50000	50000
Durability	1 million touches	1 million touches	10 million touches	10 million touches	10 million touches	10 million touches	10 million touches
Operating Temperature	-20 ~ 70° C	-10 ~ 60° C	-20 ~ 70° C	-20 ~ 70° C	0 ~ 50° C	0 ~ 50° C	0 ~ 55° C

Slim Open Frame/Panel Mount Monitors IDS-3000 Series

	IDS-3106/ IDS-3206	IDS-3110/ IDS-3210	IDS-3112/ IDS-3212	IDS-3115/ IDS-3215	IDS-3117/ IDS-3217	IDS-3118W	IDS-3119/ IDS-3219	IDS-3121W/ IDS-3221
Size	6.5"	10.4"	12.1"	15"	17"	18.5"	19"	21.5"
Resolution	640 x 480, VGA	800 x 600, SVGA	800 x 600, SVGA and 1024 x 768, XGA	1024 x 768, XGA	1280 x 1024, SXGA	1366 x 768, HD	1280 x 1024, SXGA	1920 x 1080, FHD
Brightness	800 cd/m2	400 cd/m2	450 cd/m2 and 600 cd/m2	400 cd/m2 / 1200 cd/m2	350 cd/m2	300 cd/m2	350 cd/m2	250 cd/m2
Viewing Angle(H/V°)	160/140	160/140	160/140	160/140	170/160	170/160	170/160	178/178
Contrast Ratio	600 : 1	700 : 1	700 : 1	700 : 1	800 : 1	1000:1	1000:1	1000:1
Touchscreen	4-Wire Resistive	5-Wire Resistive	5-Wire Resistive	5-wire resistive and P-cap	5-Wire Resistive	5-wire resistive and P-cap	5-Wire Resistive	5-Wire Resistive
Backlight Life (hrs)	50,000	50,000	50,000	50,000	50,000	50,000	50,000	50,000
Durability	1 million touches	36 million touches	10 million touches	50 million touches	10 million touches	50 million touches	10 million touches	10 million touches
Operating Temperature	0 ~ 50° C	-20 ~ 60° C	-20 ~ 60° C	-20 ~ 60° C	-20 ~ 60° C	0 ~ 55° C	0 ~ 45° C	0 ~ 45° C
I/O Ports	VGA x 1; DVI x 1; 12 VDC Jack x 1; USB x 1	VGA x 1; DVI x 1; 12 VDC Jack x 1; USB x 1; RS-232 x 1						
OSD	Keys: Power on/off, Menu/Enter, Left/Up, Right/Down, Exit/Auto, Source Menu Functions: Brightness, Contrast, Screen Setting, Color Temp, OSD Language, VGA/DVI, Reset, Auto Adjust							

Ultra Thin Contemporary Monitors IDP31 Series

	IDP31-104	IDP31-190	IDP31-215W
Size	10.4"	19.0"	21.5" Wide
Resolution	800 x 600	1280 x 1024	1920 x 1080
Brightness	400	350	250
Viewing Angle (H/V°)	160 / 130	170 / 160	178 / 178
Contrast Ratio	700 : 1	1000 : 1	5000 : 1
Touchscreen	Projective Capacitive Touch		Projective Capacitive Touch
Signal Interface	1 Channel LVDS		2 Channel LVDS
Backlight Life (hrs)	50000		30000
Durability	10 million touches		10 million touches
Operating Temperature	0 ~ +50		0 ~ +50

IP65 Monitors IDS-3300 Series

	IDS-3315	IDS-3317	IDS-3319	IDS-3321W
Size	15"	17"	19"	21.5"
Resolution	1024 x 768, XGA	1280 x 1024, SXGA	1280 x 1024, SXGA	1920 x 1080, FHD
Brightness	400 cd/m2	350 cd/m2	350 cd/m2	250 cd/m2
Viewing Angle (H/V°)	160/140	170/160	170/160	178/178
Contrast Ratio	700 : 1	800 : 1	1000:1	1000:1
Touchscreen	5-wire resistive and P-cap	5-Wire Resistive	5-Wire Resistive	5-Wire Resistive
Backlight Life (hrs)	50,000	50,000	50,000	50,000
Durability	50 million touches	10 million touches	10 million touches	10 million touches
Operating Temperature	- 20 ~ 60° C	- 20 ~ 60° C	0 ~ 45° C	0 ~ 45° C
I/O Ports	VGA x 1; DVI x 1; 12 VDC Jack x 1; USB x 1; RS-232 x 1			

Configurable Industrial Monitors IDS31 Series

	IDS31-070W	IDS31-104	IDS31-156W	IDS31-185W	IDS31-190	IDS31-215W	IDS31-230W	IDS31-320W
Size	7" Wide	10.4"	15.6" Wide	18.5" Wide	19"	21.5" Wide	23" Wide 32"	32" Wide
Resolution	800 x 480	800 x 600	1366 x 768	1366 x 768	1280 x 1024	1920 x 1080	1920 x 1080	1920 x 1080
Brightness	400	230	300	300	350	250	300	350
Viewing Angle (H/V°)	80,80,60,80	60,60,55,45	85,85,80,80	85,85,80,80	85,85,80,80	89,89,89,89	89,89,89,89	89,89,89,89
Contrast Ratio	500 : 1	500 : 1	500 : 1	1000 : 1	1000 : 1	5000 : 1	1000 : 1	1000 : 1
Touchscreen	5 wire AR	5 wire AR	Projected Capacitive	Projected Capacitive	Projected Capacitive	Projected Capacitive	Projected Capacitive	Surface / Projected Capacitive
Backlight Life (hrs)	50000	30000	50000	50000	50000	30000	30000	50000
Operating Temperature	0 ~ +50° C	0 ~ +50° C	0 ~ +50° C	0 ~ +50° C	0 ~ +50° C	0 ~ +50° C	0 ~ +50° C	0 ~ +50° C

Digital Signage Displays DSD-3000/5000 Series

	DSD-3032	DSD-3042	DSD-3055	DSD-5028	DSD-5038
Size	32"	42"	55"	28"	38"
Resolution	1920 x 1080	1920 x 1080	1920 x 1080	1920 x 358	1920 x 538
Brightness	350	500	450	700	800
Viewing Angle (H/V°)	178/178	178/178	178/178	178/178	176/176
Contrast Ratio	3000:1	4000:1	4000:1	3000:1	4000:1
Touchscreen	Optical Touch	Optical Touch	Optical Touch	N/A	N/A
Signal Interface	HDMI/VGA/ DisplayPort	HDMI/VGA/ DisplayPort	HDMI/VGA/ DisplayPort	VGA/DVI	VGA/DVI
Backlight Life (hrs)	50000	50000	50000	50000	50000
Durability	10 million touches	10 million touches	10 million touches	N/A	N/A
Operating Temperature	5 ~ 45° C	5 ~ 45° C	5 ~ 45° C	0 ~ 45° C	0 ~ 45° C

Curved Display CRV31 Series

	CRV31-430WP
Size	43"
Resolution	1920 x 1080 FULL HD
Brightness	450 cd/m 2
Viewing Angle (H/V°)	178/178
Contrast Ratio	4000:1 (8ms)
Touchscreen	Multi-touch PCT(10 touches)
Cover Glass	4mm
Operating Temperature	0 ~ 55° C
I/O Ports	HDMI 1.4 (2 ports), HDMI 2.0 (2 ports), DisplayPort, VGA

Your Industrial Displays Expert



Industrial Grade and Quality

Advantech provides industrial grade display solutions for industrial usages which require more rugged specification and high quality.



Extended Longevity and Warranty

We offer 2 years of product longevity and warranty. Extended warranty between 3-5 years is also available.



Global Capacity and Local Service

Advantech provides display systems globally with three manufacturing centers in Taiwan, China and USA and branch offices in 23 countries to better service customers.

Regional Service & Customization Centers

China Kunshan
86-512-5777-5666

Taiwan Taipei
886-2-2792-7818

Netherlands Eindhoven
31-40-267-7000

Poland Warsaw
00800-2426-8080

USA Milpitas, CA
1-408-519-3898

Worldwide Offices

Greater China

China
Toll Free 800-810-0345
Beijing 86-10-6298-4346
Shanghai 86-21-3632-1616
Shenzhen 86-755-8212-4222
Chengdu 86-28-8545-0198
Hong Kong 852-2720-5118

Taiwan
Toll Free 0800-777-111
Neihu 886-2-2792-7818
Xindian 886-2-2218-4567
Taichung 886-4-2329-0371
Kaohsiung 886-7-229-3600

Middle East and Africa

Israel 072-2410527

Asia

Japan
Toll Free 0800-500-1055
Tokyo 81-3-6802-1021
Osaka 81-6-6267-1887
Nagoya 81-0800-500-1055

Korea
Toll Free 080-363-9494
Seoul 82-2-3663-9494

Singapore
Singapore 65-6442-1000

Malaysia
Kuala Lumpur 60-3-7725-4188
Penang 60-4-537-9188

Thailand
Bangkok 66-2-248-3140

India
Bangalore 91-80-2545-0206
Pune 91-20-3948-2075

Indonesia
Jakarta 62-21-751-1939

Australia
Toll Free 1300-308-531
Melbourne 61-3-9797-0100

Europe

Germany
Toll Free 00800-2426-8080/81
Munich 49-89-12599-0
Düsseldorf 49-2103-97-855-0

France
Paris 33-1-4119-4666

Italy
Milano 39-02-9544-961

Benelux & Nordics
Breda 31-76-523-3100

UK
Newcastle 44-0-191-262-4844
London 44-0-870-493-1433

Poland
Warsaw 48-22-31-51-100

Russia
Moscow 8-800-555-01-50
St. Petersburg 8-800-555-81-20

Czech Republic
Ústí nad Orlicí 420-465-521-020

Ireland
Oranmore 353-91-792444

Americas

North America
Toll Free 1-888-576-9668
Cincinnati 1-513-742-8895
Milpitas 1-408-519-3898
Irvine 1-949-420-2500
Ottawa 1-815-434-8731

Brazil
Toll Free 0800-770-5355
São Paulo 55-11-5592-5355

Mexico
Toll Free 1-800-467-2415
Mexico City 52-55-6275-2727

ADVANTECH

Enabling an Intelligent Planet

www.advantech.com

Please verify specifications before ordering. This guide is intended for reference purposes only.

All product specifications are subject to change without notice.

No part of this publication may be reproduced in any form or by any means, electronic, photocopying, recording or otherwise, without prior written permission of the publisher.

All brand and product names are trademarks or registered trademarks of their respective companies.

© Advantech Co., Ltd. 2017

860000341