

WebAccess/DMP₂

Generation/2

Remote device provisioning,
monitoring and management platform.

- ✓ Performance at Scale
- ✓ Extensible Architecture
- ✓ AssureAuth™ PKI
- ✓ Multi Tenancy
- ✓ AssureSync™ Configuration Management
- ✓ Secure Device Health Monitoring
- ✓ Built for Interoperability
- ✓ Fully API Enabled



ADVANTECH

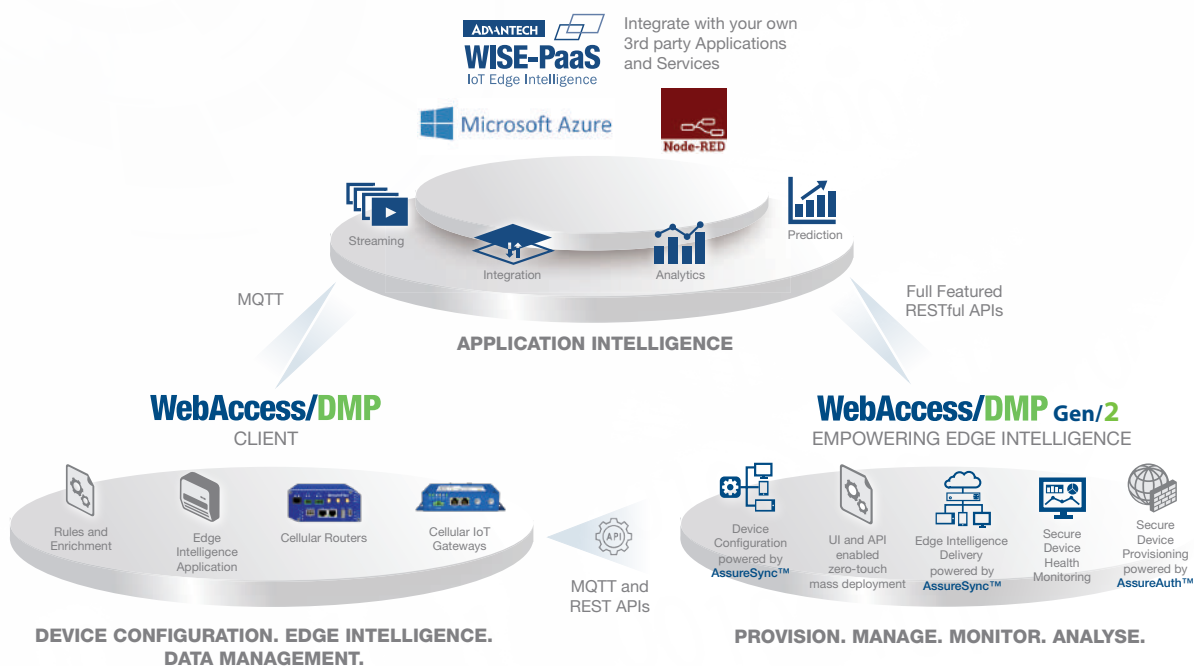
Enabling an Intelligent Planet

www.advantech.com

WebAccess/DMP₂

WebAccess/DMP Generation 2 is an advanced Enterprise-Grade platform solution for provisioning, monitoring, managing and configuring Advantech's routers and IoT gateways. It provides a zero-touch enablement platform for each remote device.

With **WebAccess/DMP**, secure zero-touch pre-provisioning and pre-configuration is simple, regardless of how large your deployment is: from one device to thousands. The platform supports full multi-tenancy, with the possibility of permissions-enabled power-user oversight across tenancies.



The WebAccess/DMP - Solution Facts & Benefits

• General

As an established specialist in IoT and M2M solutions, with proven pedigree and capability, Advantech has leveraged a wealth of contextual and environmental knowledge to bring you WebAccess/DMP Generation 2.0.

The entire software architecture has been re-imagined and re-built with Security, Performance at Scale, Reliability, Usability, Extensibility and Interoperability at the heart of every decision.

• Provisioning

AssureAuth™ PKI is used during the device provisioning sequence. Both device and server must mutually authenticate, using Advantech's Certificate Authority as the root of trust. Once successfully provisioned via a successful bootstrapping sequence, the devices will automatically connect with the platform.

• Device Management

Device management is taken to the next level, with AssureSync™ Configuration Management. Using the concept of a Digital Twin Device Model, the platform is capable of managing multiple device states, for every supported device type and firmware version. The 'desired state' is a state enabled by WebAccess/DMP, on a setting-by-setting basis: when a 'desired state' is enabled, then the AssureSync™ engine will push the desired configuration to the desired device: and will ensure that the configuration is continuously enforced, regardless of whether that configuration setting is manipulated (maliciously or otherwise) locally at the device itself. AssureSync™ also works on Firmware Version and on Edge Intelligence App delivery (including version and configuration settings).

• Device Monitoring

Monitoring device health is an important consideration for any management and monitoring platform. WebAccess/DMP provides secure device health monitoring, without requiring any configuration. Of course, whether this data is reported at all may be tuned, and turned off entirely, if so required. For every device, the health data is presented in a scalable time-series visualisation: thus empowering the in-depth analysis in the simplest possible way.

• Interoperability and Extensibility

Technology changes fast: and in the world of IoT and ever growing complexity and scale, the necessity to interoperate with existing solutions is crucial. WebAccess/DMP is built for interoperability, and for extensibility: the solution comes complete with a secure and full-featured REST based API. Empower your world: plug in and build out.

PRODUCT FEATURES

Performance at Scale

WebAccess/DMP Generation 2 has been built for scale and performance. The backend service architecture includes high-availability broker clusters, with load-balancing and elastic scale enablement. Rest assured that your needs will be met, as you grow and scale your business.

Extensible Architecture

The platform has been designed for **extensibility**. Using **leading-edge micro-services** enabled architectural best practices, together with **leading-edge elastic scale technologies**, load balancing and brokerage services, the platform will scale-out as necessary. The **user-interface** is built on our publicly **available API**, via our publicly available API Gateway, which enables real-time extensibility to available functionality, and the ability to integrate functionality with your existing services and infrastructure seamlessly: plug in, build-out.

AssureAuth™ PKI

Security is **built-in** by design: we have built a full **Public Key Infrastructure (PKI)** stack into the product suite: your connected devices are securely provisioned, certified and authenticated.

Multi Tenancy

Every User must belong to at least one Tenant. Every User may belong to one or more Tenancies. Every Tenant has an “Admin” User, who decides on how to grant user-permissions. For each User, for each Tenancy they belong to, unique user permissions may be granted.

AssureSync™ Configuration Management

WebAccess/DMP Generation 2 has incorporated **industry best-practice Digital Twin Device Model technology** and combined it with **real-time user-interface configuration** status indicators. It is possible to granularly configure every possible configuration item on every device, as a Desired State. Every device will report its **actual configuration**, for every configuration item, which will be stored as a Reported State. Our **AssureSync™** Configuration Management engine will detect differences between Desired and Reported states, and automatically reconcile differences.

Edge Intelligence App management

Deploy one or many of our pre-prepared **Edge Intelligence applications** (also known as “**user modules**” or “**Apps**”) directly from WebAccess/DMP, to one or many of your remote devices. Manage the Apps and versions you deploy: you can “pin” a specific App version, for each of your selected devices, as a Desired State, and you can manage the configuration settings for each App, for each device it's deployed onto.

Use the device's SDK to **build your own Edge Intelligence Apps**, then use the WebAccess/DMP API to publish and deploy your own Apps, at scale: WebAccess/DMP enables you to build your own required platform-side user-interface automatically.

Any Apps that you create yourself will be managed through our AssureSync™ configuration management engine, just like our native Apps.

Secure Device Health Monitoring

Every remote **device has build-in secure health-monitoring status indicators**, that are reported to WebAccess/DMP, and stored in a **Time-Series database**: by default you get **3-months of history data**, which you can zoom-in on and analyse at will, in real-time.

Location Monitoring is also available, and can be enabled to show you precise GPS based geographic-location for each of your remote devices.

Built for Interoperability

WebAccess/DMP Generation 2 is Fully API Enabled: in fact, we built our entire user-interface application using the publicly-available secure REST based API, via our publicly available API gateway, which you can find at <https://api.wadmp.com>

This means that you have the power of interoperability with your existing infrastructure: integrate the available services that we provide with the services you wish to observe or consume.

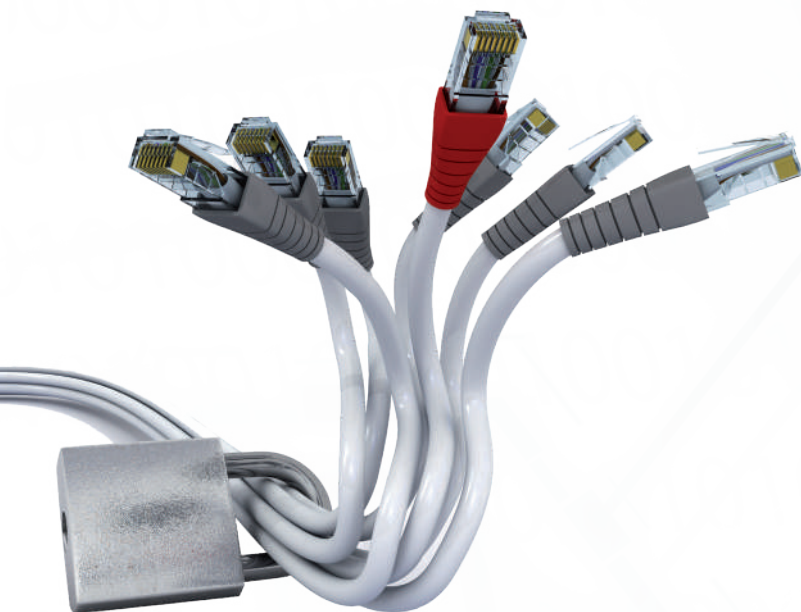
SW OPTIONS & ORDERING CODES

WebAccess/DMP is available as cloud hosted **Solution-as-a-Service**, available 24/7, with **no setup cost or time investment** required. Simply create an account for yourself, and you're ready to go: you can add up to **5 Cellular Router or IoT Gateway devices free of charge**, and with no expectations or constraints. There is **no time-limit** on your user-account, and **no limit to the number of users** you can add to your free Tenancy. Advantech doesn't even require you to enter a payment-method: getting started with management and monitoring of your first 5 devices is **100% risk-free** for you.

ORDERING CODES

DMP-CLD-TRIAL	Trial License for using the Cloud instance of WebAccess/DMP.
DMP-CLD-FULL-PDPM	Full version of user License for using the Cloud instance of WebAccess/DMP.

WebAccess/DMP is a hosted and managed solution: software updates, bug fixes, security updates and feature additions will be continuous and ongoing.



Regional Service & Customization Centers

China	Kunshan 86-512-5777-5666	Taiwan	Taipei 886-2-2792-7818	Netherlands	Eindhoven 31-40-267-7000	Poland	Warsaw 00800-2426-8080	USA	Milpitas, CA 1-408-519-3898
--------------	-----------------------------	---------------	---------------------------	--------------------	-----------------------------	---------------	---------------------------	------------	--------------------------------

Worldwide Offices

Greater China

China	
Toll Free	800-810-0345
Beijing	86-10-6298-4346
Shanghai	86-21-3632-1616
Shenzhen	86-755-8212-4222
Chengdu	86-28-8545-0198
Hong Kong	852-2720-5118

Taiwan	
Toll Free	0800-777-111
Taipei & IoT Campus	886-2-2792-7818
Taichung	886-4-2372-5058
Kaohsiung	886-7-392-3600

Middle East and Africa

Israel	072-2410527
--------	-------------

Asia

Japan	
Toll Free	0800-500-1055
Tokyo	81-3-6802-1021
Osaka	81-6-6267-1887
Nagoya	81-0800-500-1055

Korea	
Toll Free	080-363-9494
Seoul	82-2-3663-9494

Singapore	
Singapore	65-6442-1000

Malaysia	
Kuala Lumpur	60-3-7725-4188
Penang	60-4-537-9188

Thailand	
Bangkok	66-02-2488306-9

Vietnam	
Hanoi	84-24-3399-1155

Indonesia	
Jakarta	62-21-751-1939

Australia	
Toll Free	1300-308-531
Melbourne	61-3-9797-0100

India	
Bangalore	91-80-2545-0206
Pune	91-94-2260-2349

Europe

Netherlands	
Eindhoven	31-40-267-7000
Breda	31-76-523-3100

Germany	
Toll Free	00800-2426-8080/81
Munich	49-89-12599-0
Düsseldorf	49-2103-97-855-0

France	
Paris	33-1-4119-4666

Italy	
Milan	39-02-9544-961

UK	
Newcastle	44-0-191-262-4844
London	44-0-870-493-1433

Spain	
Madrid	34-91-668-86-76

Sweden	
Stockholm	46-722-293423

Poland	
Warsaw	48-22-31-51-100

Russia	
Moscow	8-800-555-01-50
St. Petersburg	8-800-555-81-20

Czech Republic	
Ústí nad Orlicí	420-465-52-44-21

Ireland	
Galway	353-91-792444

Americas

North America	
Toll Free	1-888-576-9668
Cincinnati	1-513-742-8895
Milpitas	1-408-519-3898
Irvine	1-949-420-2500
Ottawa	1-815-434-8731

Brazil	
Toll Free	0800-770-5355
São Paulo	55-11-5592-5367

Mexico	
Toll Free	1-800-467-2415
Mexico City	52-55-6275-2727

WebAccess/DMP

COMPATIBLE WITH V2 FAMILY (LR77 V2, UR51 V2) AND V3 FAMILY (ICR-3XXX, SmartStart, SmartFlex, SmartMotion) CELLULAR ROUTERS & GATEWAYS.



V2
LIBRATUM



V2
UR51 V2, LR77 V2



V3
SmartFlex



V3
SmartMotion



V3
ICR-3200



V3
SmartStart

ADVANTECH

Enabling an Intelligent Planet

www.advantech.com

Please verify specifications before quoting. This guide is intended for reference purposes only.

All product specifications are subject to change without notice.

No part of this publication may be reproduced in any form or by any means, electronic, photocopying, recording or otherwise, without prior written permission of the publisher.

All brand and product names are trademarks or registered trademarks of their respective companies.

© Advantech Co., Ltd. 2019

March 10, 2020 10:58AM