

Edge Intelligence Server

Simplify IoT Deployment from Edge to Cloud

- ✓ Solution Diagram
- ✓ Software Integration
- ✓ Application Stories

- ✓ IoT Connectivity and Data Integration Services
- ✓ Operation Management and Real-time Edge Analytics
- ✓ Quickly Deploy Private/Public Cloud Applications



WISE-PaaS/DeviceOn



ADVANTECH

Enabling an Intelligent Planet



IoT Solutions
Alliance
Premier

arm



Microsoft

Edge Intelligence and Data Service Servers

Advantech edge intelligence servers accelerate IoT implementation by providing integrated solutions that include edge computers, WISE-PaaS/DeviceOn IoT device operation management software, IoT development tools, and pre-configured cloud services. Furthermore, Advantech provides data service servers as scalable data management platforms for private cloud solutions. They are all-in-one platforms with an open standard structure and have Kubernetes built-in, platform management software, and self-health management. Our servers facilitate IoT connectivity, light edge analytics and cloud integration, thus simplifying IoT application deployment, visualization, and predictive maintenance for IoT applications.



WISE-PaaS/ DeviceOn

IoT Device Operation Management



Device Management



Monitoring & Control



Update Management



EIS-D150

High Performance



EIS-D620

RISC-based



EIS-D210

LPWAN Connectivity



EIS-D120

Multiple I/O



EIS-D110

Wireless Connectivity

Wireless

IoT Devices



Controllers



IoT Devices



Sensors

Wired

Industrial Protocols



Motors

PLC Controllers



Workstations



Robots

CNC Controllers



CNC Machines

Dashboard and Development Tools

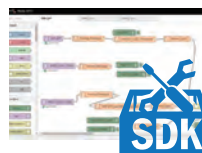
For Edge Intelligence Server



WISE-PaaS/ DeviceOn

Device Operation Management

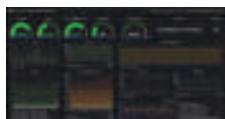
- Centralized IoT device HW & SW status management
- Built-in 15+ real-time monitoring widgets
- up to 1000 device connections



IoT Development Tools

- Node-RED data flow logic designer
- Dashboard builder
- Protocol plug-in SDK & configuration tools

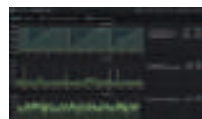
For Data Service Server



kubernetes

Data & System Management

- Kubernetes resource monitor
- Application status monitor
- Database I/O throughput monitor



Self-health Management

- Condition monitor
- Load balance
- Events/alerts

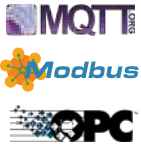
Software Package

DeviceOn/Edge IoT Connectivity



Edge IoT Application Development

Open Plug-in SDK and sample code for sensor and data collection and conversion.



Industrial Protocol Connectivity

Provides standard protocols (Modbus/OPC/ MQTT) for sensor and devices data collection.



I/O and Sensor Compatibility

Integration tested with Advantech M2.COM, ADAM and WISE-4000 series.

DeviceOn/Cloud Operation Management



Device Management

- Automatic device registration
- One-key to dashboard
- Device security



Monitoring & Control

- Real-time operations
- Power on/off
- Remote control



Update Management

- Batch provisioning
- Firmware updates
- Software updates

Public & Private Cloud Integration

Microsoft Azure Cloud Services

Pre-configured with Azure Kubernetes services to quickly integrate with other cloud modules and shorten development effort.

[Microsoft Azure](#)

Advantech WISE-PaaS/EnSaaS Cloud Services

Pre-configured WISE-PaaS/EnSaaS IoT cloud services. Quickly and easily deploy your IoT application with Advantech WISE-PaaS.

[WISE-PaaS/ EnSaaS](#)

Private Cloud

Data service server provides a scalable data management platform with Kubernetes open standard environment.



Solution Highlights



EIS-S230

High Availability
Data Service Server

- Intel® Xeon® E3-1275 V6 / 6th Gen. Core™ i7-6700
- Ubuntu
- PCI, COM, GbE



arm

EIS-D620

RISC-based
Edge Intelligence Server

- Rockchip RK3399
- Debian
- COM , GbE
- Wi-Fi, 4G



EIS-D210

LPWAN Connectivity
Edge Intelligence Server

- Intel® Celeron® N3350
- Win 10 Enterprise
- COM , GbE, iDoor
- Wi-Fi, LoRa, Bluetooth



EIS-D150

High-Performance
Edge Intelligence Server

- 6th Gen Intel® Core™ U-series
- WES7E/ Win 10 Enterprise
- COM , GbE, iDoor

Package Offerings

NEW

NEW



Model Name	EIS-S230 Data Service Server	EIS-D620 RISC-based	EIS-D210 LPWAN Connectivity	EIS-D150 High Performance	EIS-D120 Multiple I/O	EIS-D110 LPWAN Connectivity
CPU	Intel® Xeon® E3-1275 V6 / 6th Gen. Core™ i7-6700	Rockchip RK3399	Intel® Celeron® N3350	Intel® 6th Gen Core™ i5 6300U	Intel® Celeron® J1900	Intel® Celeron® J1900
RAM/Storage	32G/Optional	2GB/ 16GB eMMC	4GB/ 64GB SSD	4GB /64GB SSD	4GB /64GB SSD	4GB /64GB SSD
OS	Ubuntu	Debian	Win 10 IoT Enterprise	WES7E Win 10 IoT Enterprise	WES7E Win 10 IoT Enterprise	WES7E Win 10 IoT Enterprise
I/O Interface	HDMIx1, GbEx4, RS-232/422/485 x4 USB 3.0 x8	HDMI x2, GbEx2 RS-232 x1, USB 3.0x1, USB2.0x1	VGA x1, GbE x2, RS232/422/485 x2, USB 3.0 x4 , iDoor	HDMI x1, VGA x1, GbE x2, RS232/422/485x4, iDoor	HDMIx1, VGAx1, GbE x2, RS-232 x2, RS-232/422/485 x2, iDoor.	HDMI x2, GbE x2, RS232/422/485x1
Wireless Networking	Optional					IEEE 802.11 a/b/g/n Bluetooth 4.0 HS
Dimensions (W x H x D)	156.5 x 205 x 230 mm	135 x 130 x 29 mm	133 x 46.4 x 94.2 mm	260 x 54 x 140.2 mm	264.5 x 68.4 x 133.0 mm	133.8 x 43.1 x 94.2 mm
Software Package	WISE-PaaS/ DeviceOn IoT Device Operation Management <ul style="list-style-type: none"> • Device Management • Monitoring & Control • Update Management Platform Management <ul style="list-style-type: none"> • Docker, Kubernetes • RabbitMQ, MongoDB • PostgreSQL, Grafana 	WISE-PaaS/ DeviceOn IoT Device Operation Management <ul style="list-style-type: none"> • Device Management • Monitoring & Control • Update Management WebAccess/SCADA Smart SCADA <ul style="list-style-type: none"> • Dashboard Editor Viewer • Widget Library & Widget Builder • Cross Browser & Device Viewing (for EIS-D210, 150, 120, 110)				
Development Tools	Kubernetes Development Kit	Node-RED Data Flow Logic Designer & Dashboard Builder Protocol Plug-in SDK & Configuration Tools				
Ordering Information	EIS-S230-U20S501	EIS-D620-D1DE121	EIS-D210W-E1DS641 (Win 10)	EIS-D150-W1DS641 (WES7E)	EIS-D120-W1DS641 (WES7E)	EISD110W1SS641-BT0 (WES7E)
				EIS-D150-E1DS641 (Win 10)	EIS-D120-E1DS641 (Win 10)	EISD110W1SS141-BT0 (WES7E/128G SSD)
						EISD110E1SS641-BT0 (Win 10)

Quick Starter Kit



EIS-DK10

- Complete IoT connection solutions: includes a ready-to-run edge system, IoT software platform service (WISE-PaaS), wireless I/O module, and sensor
- Pre-configured Microsoft Azure service (1 month free trial)
- Pre-integrated software tool includes WISE-PaaS for data visualization and Node Red flow template for easy development
- Pre-configured system: Intel® Celeron® J1900 and WES7E with 4GB memory and 64 GB SSD

Ordering Information: EISDK-ARK1123-BT0 (WES7E)

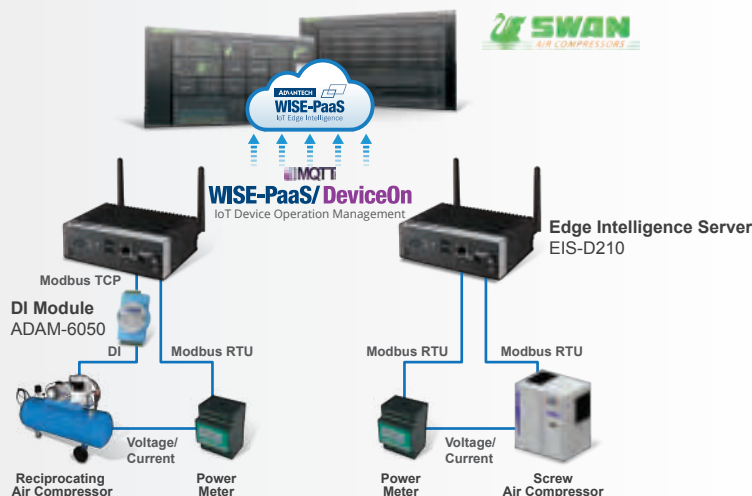
Air Compressor Manufacturer Creates New Service Model with IoT Edge Technology



Compressed air is used as a major source of energy transfer that drives many of today's manufacturing processes and is widely used in many industries and applications, such as heavy lifting and conveyance, tire inflation, and much more. An unexpected failure of air compressor equipment in any workplace will lead to costly downtimes and increased production line costs. Advantech worked with air compressor manufacturer SWAN to deliver a solution for their products.

Customer Benefits

- Powerful connectivity and data acquisition capabilities help the customer quickly deploy IoT and integrate field data with backend management.
- Pre-installed IoT software platform provides a multitude of APIs to develop customizable dashboards and integrate cross-platform data and applications.
- Allows customers to inaugurate preventive maintenance, minimizes unexpected equipment breakdowns, and brings industrial and business transformation.



Remote Monitoring System Optimizes IC Testing Workflow Efficiency and Productivity



In the past, IC design company used commercial-grade PCs to perform the task, but suffered constant issues due to the high breakdown rates. What's more, due to the lack of a network management platform, their IC test engineers had to stay close each computer to oversee the test processes and results, and if needed, change and input new test conditions into the computer, which is a highly time and labor consuming process. The company deployed Advantech's edge intelligence server in place of standard PCs to construct a remote monitoring control system which would carry out and oversee all IC testing processes.

Customer Benefits

- Enhances equipment management capability, optimizes the IC test process, and improves overall productivity and efficiency.
- The implementation of remote monitoring and software updates via OTA technology reduces the workload of the IC testing department, freeing up engineers for other tasks.
- Industrial-grade edge computing provide higher robustness and reliability on the production line environment, with powerful engineering support and services from Advantech with system modifications and maintenance.



Great Benefits for IoT System Designers



Pre-integrated IoT Software

Advantech WISE-PaaS software built-in, including WISE-PaaS/DeviceOn for devices management and WebAccess/SCADA for Industrial applications



Simplify IoT Deployment

Provides software development kits (SDKs) for data collection, pre-processing and management, with technical documents and sample code. Gives developers an easy start.



Quick Cloud Connection

Provides pre-configured Azure IoT service in WISE-PaaS Marketplace. Quickly and easily connect your IoT application with Azure Cloud.

Find more information



Regional Service & Customization Centers

China	Kunshan 86-512-5777-5666	Taiwan	Taipei 886-2-2792-7818	Netherlands	Eindhoven 31-40-267-7000	Poland	Warsaw 00800-2426-8080	USA	Milpitas, CA 1-408-519-3898
--------------	-----------------------------	---------------	---------------------------	--------------------	-----------------------------	---------------	---------------------------	------------	--------------------------------

Worldwide Offices

Greater China

China	
Toll Free	800-810-0345
Beijing	86-10-6298-4346
Shanghai	86-21-3632-1616
Shenzhen	86-755-8212-4222
Chengdu	86-28-8545-0198
Hong Kong	852-2720-5118

Taiwan	
Toll Free	0800-777-111
Neihu	886-2-2792-7818
Xindian	886-2-2218-4567
Taichung	886-4-2329-0371
Kaohsiung	886-7-229-3600

Middle East and Africa

Israel	072-2410527
--------	-------------

Asia

Japan	
Toll Free	0800-500-1055
Tokyo	81-3-6802-1021
Osaka	81-6-6267-1887
Nagoya	81-0800-500-1055

Korea	
Toll Free	080-363-9494
Seoul	82-2-3663-9494

Singapore	
Singapore	65-6442-1000

Malaysia	
Kuala Lumpur	60-3-7725-4188
Penang	60-4-537-9188

Thailand	
Bangkok	66-2-248-3140

India	
Bangalore	91-80-2545-0206
Pune	91-20-3948-2075

Indonesia	
Jakarta	62-21-751-1939

Australia	
Toll Free	1300-308-531
Melbourne	61-3-9797-0100

Europe

Netherlands	
Eindhoven	31-40-267-7000

France	
Paris	33-1-4119-4666

Italy	
Milan	39-02-9544-961

UK	
Newcastle	44-0-191-262-4844
London	44-0-870-493-1433

Russia	
Moscow	8-800-555-01-50
St. Petersburg	8-800-555-81-20

Germany	
Munich	49-89-12599-0
Düsseldorf	49-2103-97-855-0

Sweden	
Stockholm	46-722-293423

Poland	
Warsaw	48-22-31-51-100

Spain	
Madrid	34-91-668-86-76

Czech Republic	
Ústí nad Orlicí	420-465-521-020

Ireland	
Galway	353-91-792444

Americas

North America	
Toll Free	1-888-576-9668
Cincinnati	1-513-742-8895
Milpitas	1-408-519-3898
Irvine	1-949-420-2500
Ottawa	1-815-434-8731

Brazil	
Toll Free	0800-770-5355
São Paulo	55-11-5592-5355

Mexico	
Toll Free	1-800-467-2415
Mexico City	52-55-6275-2727

ADVANTECH

Enabling an Intelligent Planet

www.advantech.com

Please verify specifications before quoting. This guide is intended for reference purposes only.

All product specifications are subject to change without notice.

No part of this publication may be reproduced in any form or by any means, electronic, photocopying, recording or otherwise, without prior written permission of the publisher.

All brand and product names are trademarks or registered trademarks of their respective companies.

© Advantech Co., Ltd. 2019

8600000491