

Embedded IoT

# WISE-PaaS

## Enabling IoT Edge Intelligence with a Collaborative Ecosystem



**WISE-PaaS/ DeviceOn**  
IoT Device Operation Management

**ADVANTECH**

*Enabling an Intelligent Planet*

Microsoft McAfee Acronis

# Industrial IoT Demand on the Rise

Billions of Connected Devices Driving AIoT Transformation

A surge in market demand for Industrial IoT products has rapidly increased the number of connected devices that are currently deployed and managed across different locations. It is essential to effectively manage, monitor, and control thousands of connected devices while ensuring uninterrupted service. Devices must work properly and securely after they have been deployed - without requiring frequent visits from service technicians. Customers require secure access to their devices in order to detect, troubleshoot, and undertake time-critical actions.



## WISE-PaaS

Automated Device Connection

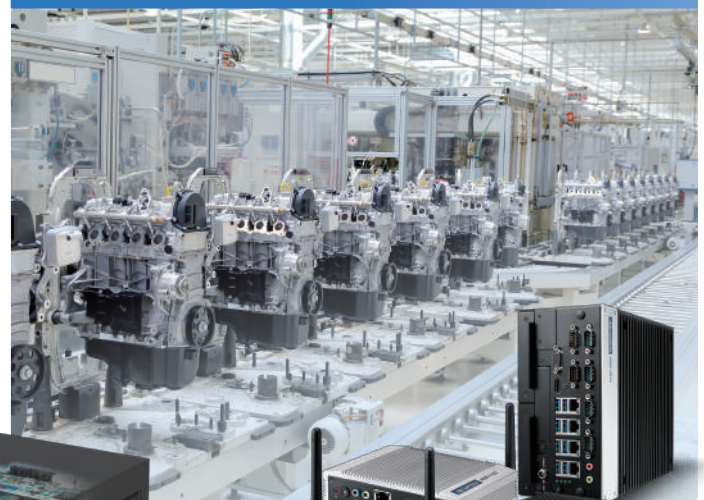
Over-the-Air Software Updates

### Remote Monitoring & Control



Embedded Boards

### Over-the-Air Software Update



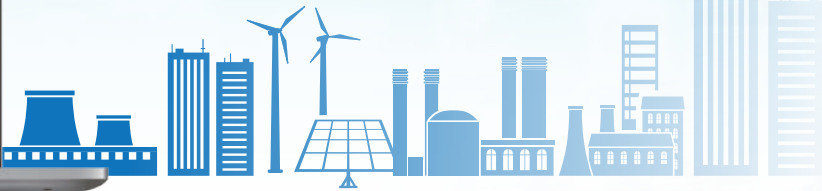
Embedded PCs

Embedded Computers

# WISE-PaaS/DeviceOn

Power Up IoT Devices with 24/7 Operation Management

Advantech's brand-new designed IoT device operations and management solution gives users a transformational plug-and-play experience. Beginning with onboarding devices, WISE-PaaS/DeviceOn's fast and simple setup helps provide instant intelligent edge connection, data acquisition, and status visualization at the device operations center. Power on/off is also available at the tap of a button for quick and easy access. Over-the-Air software updates itself securely by sending software patch, firmware, software, and configuration updates through batch provisioning. The App is designed to ensure maximum efficiency in IoT device operations and management.



## DeviceOn

Remote Device Monitoring and Control



### Data Collection & Visualization



Wireless IoT Gateways

### Automated Alert Notification



Vertical Focused Solutions

# Equipment to Intelligence Solutions

## Enable Equipment Intelligence and Asset Management

For equipment in the field, it is critical to quickly identify the source of any problem that occurs and take corrective action. Enabling equipment intelligence and detecting problems before a device shuts down completely is key to optimizing productivity and performance. Advantech's equipment-to-intelligence (E2I) solution series can improve asset utilization, facilitate preventative maintenance planning, and enable a new equipment as a service (EaaS) business model.



### WISE-PaaS/ DeviceOn Equipment Edge Connectivity Solution

#### SRP-E2i110

Establishing both wired and wireless edge-to-cloud connectivity while providing protocol conversion, edge intelligence, and equipment status management dashboard. This solution facilitates data visualization, remote monitoring, alarm notification, and asset management.

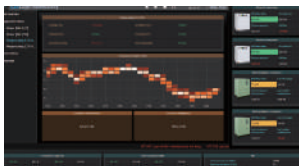
### WISE-PaaS/ DeviceOn Equipment Vibration Monitoring Solution

#### SRP-E2i210

Facilitates real-time vibration monitoring, time-frequency vibration data analysis, and alarm management/maintenance. With its application dashboard, users can visualize vibration data and monitor equipment status to enhance maintenance efficiency. This can reduce equipment maintenance costs and provide a predictive maintenance mechanism, thus ensuring a high return on investment.

### Edge Connectivity Dashboard

#### Dashboard Highlights



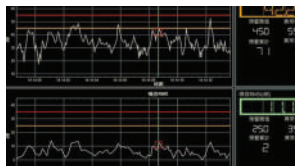
#### Reciprocating Compressor

- Frequency domain
- RMS status monitoring
- Time-frequency analysis



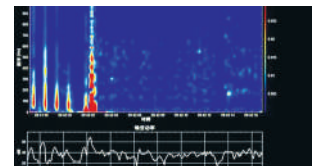
#### Screw Air Compressor

- Discharge information
- Loading status



#### Vibration Data Analytics

- Frequency domain
- RMS status monitoring
- Time-frequency analysis



#### Condition Monitoring

- Threshold monitoring
- Data monitoring and alerts

# Edge Intelligence and Data Service Server

## Simplify IoT Deployment from Edge to Cloud

Advantech edge intelligence servers accelerate IoT implementation by providing integrated solutions that include edge computers, WISE-PaaS/DeviceOn IoT device operation management software, IoT development tools, and pre-configured cloud services. Furthermore, Advantech provides data service servers as scalable data management platforms for private cloud solutions. They are all-in-one platforms with an open standard structure and have Kubernetes built-in, platform management software, and self-health management. Our servers facilitate IoT connectivity, light edge analytics and cloud integration, thus simplifying IoT application deployment, visualization, and predictive maintenance for IoT applications.



## WISE-PaaS/ DeviceOn

IoT Device Operation Management



## Dashboard and Development Tools

For Edge Intelligence Server



**WISE-PaaS/ DeviceOn**

### Device Operation Management

- Centralized IoT device HW & SW status management
- Built-in 15+ real-time monitoring widgets
- Up to 1000 device connections



### IoT Development Tools

- Node-RED data flow logic designer
- Dashboard builder
- Protocol plug-in SDK & configuration tools

For Data Service Server



### Data & System Management

- Kubernetes resource monitor
- Application status monitor
- Database I/O throughput monitor



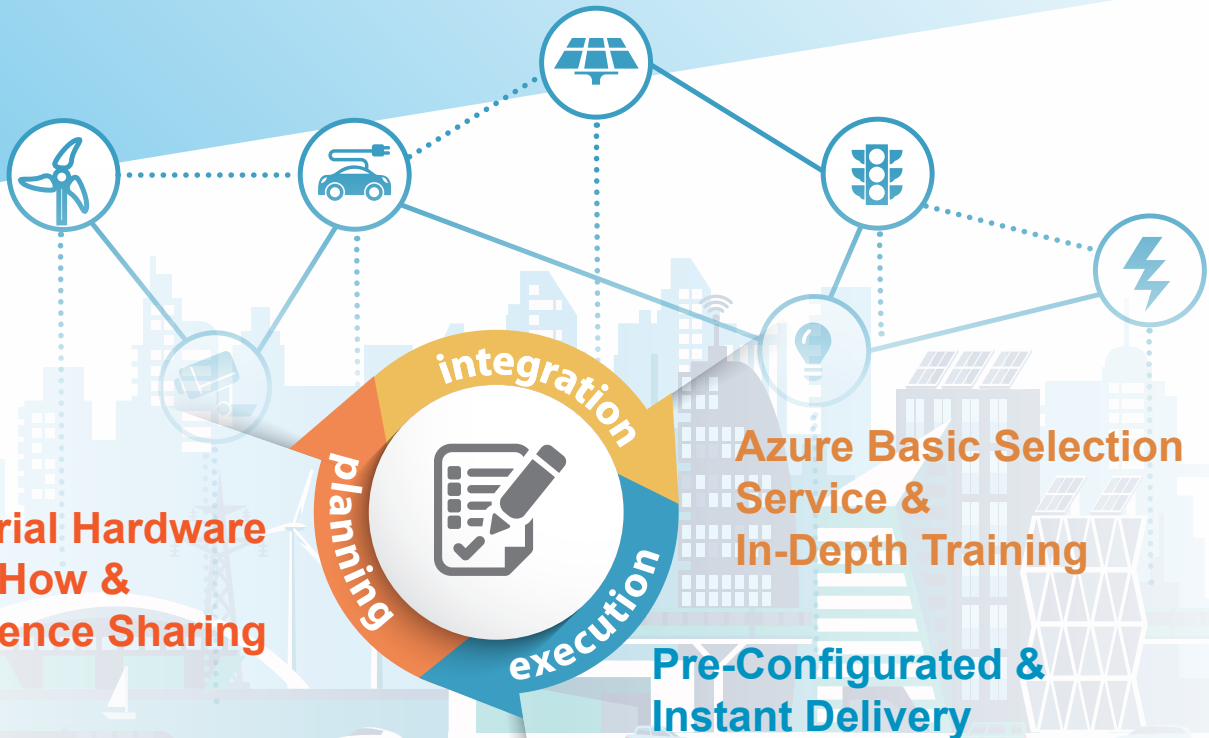
### Self-Health Management

- Condition monitor
- Load balance
- Events/alerts

# Microsoft Azure Migration Services

## Embrace Digital Transformation with Advantech

Azure is an ever-expanding set of cloud computing services to help your organization meet its business challenges. With Azure, your business or organization has the freedom to build, manage, and deploy applications on a massive, global network using your preferred tools and frameworks. Advantech offers Microsoft Azure Cloud Services, helping businesses connect their industrial solutions to the cloud through both custom service packages and pre-configured solution packages. Custom cloud infrastructure services are allowing customers to choose the services that best fits their needs, ensuring they only pay for what they use. Alternatively, Advantech offers pre-configured solution packages ready for immediate deployment. The IoT Central connects, monitors, and manages your IoT assets at scale, and IoT cloud solution accelerators connect and monitor your devices remotely. Improve your industrial efficiency with a connected factory and increase equipment reliability with predictive maintenance. All services will be covered by Pay As You Go in your monthly billing structure.



## Service Highlights



### Compute

- Access cloud compute capacity
- Virtualization and scale on demand
- only pay for the resources you use



### Storage

- Range of solutions for your needs
- Scalability you will not outgrow
- Flexible as your needs change



### Database

- Database
- Intelligent, scalable, cloud database service
- The broadest SQL engine compatibility
- Up to a 212% return on investment

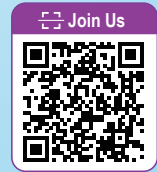


### IoT Service

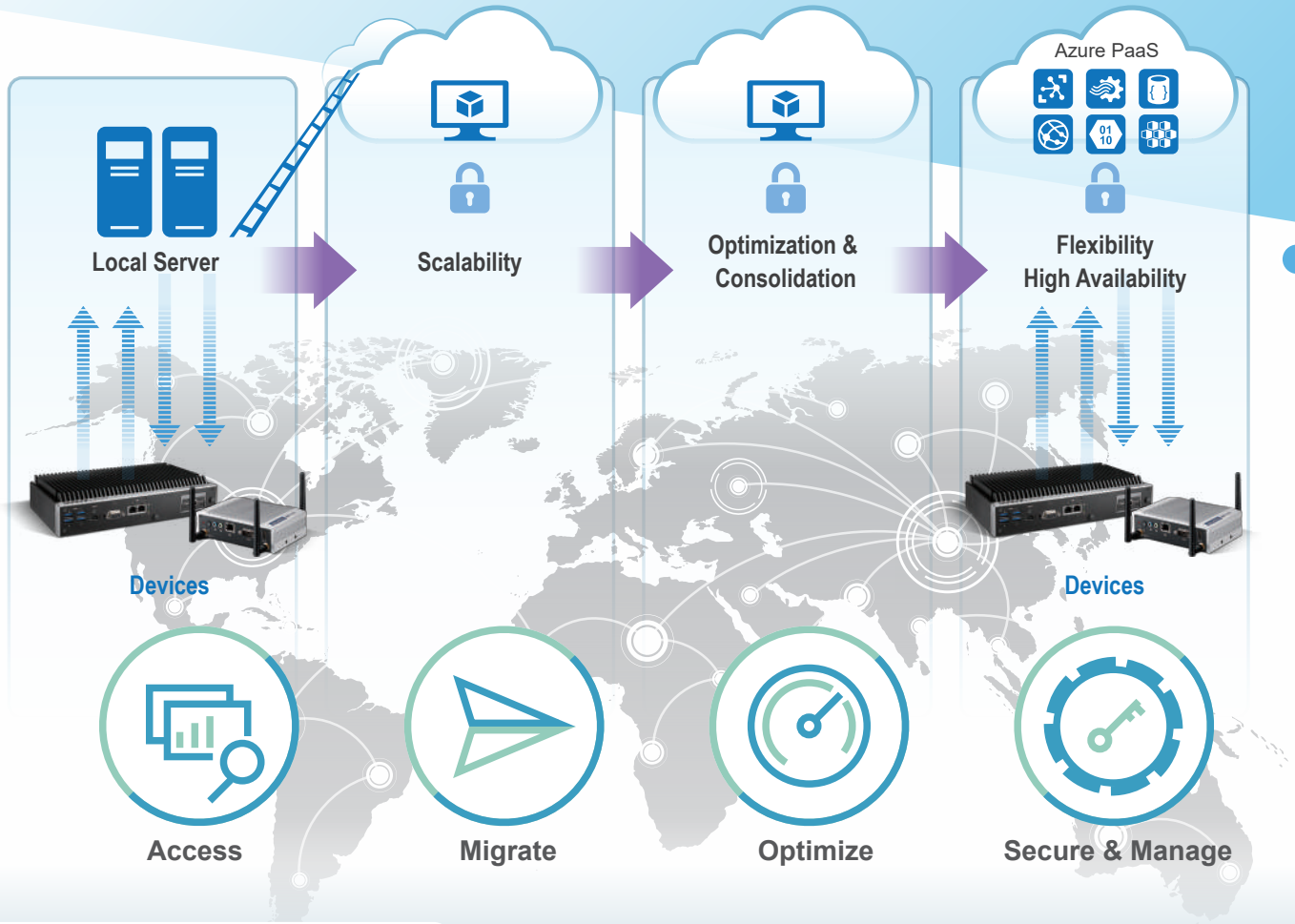
- IoT Service
- Security from the endpoint to cloud.
- Open for any devices, OS, and data services
- Scalability enable millions of devices and terabytes of data

## Microsoft Embedded License and Cloud Service Global Distributor

As a strategic industrial partner of Microsoft, Advantech seamlessly integrates Microsoft's direct support to provide our partners with headache-free headache-free services. Our industrial partners will get know-your-need software and cloud solutions from Advantech to meet their expectations. Let Advantech know your requirements, we'll always find a way to work out a solution for you.



## Advantech Azure Services



### Microsoft Azure Cloud Offerings



#### Advantech Azure Solution

- Perfect integration
- Azure and Advantech hardware
- Industrial domain know-how solutions



#### Microsoft Azure

- Computing and storage
- Internet of things
- AI + machine learning



#### Office 365

- Full access, anytime and anywhere
- Pay-as-you-go flexibility for your business
- Automatic updates for no additional charge

# WISE-PaaS/Security powered by McAfee Acronis

## Comprehensive Threat Protection and Backup Recovery

McAfee™ embedded solutions provide superior and intelligent security functions, such as whitelisting and blacklisting, for protecting IoT devices and data from zero-day attacks, monitoring/tracking system changes, and guarding entire systems with McAfee Global Threat Intelligence. WISE-PaaS/Security, empowered by McAfee™, provides a centralized IoT security management console on Azure for deploying security policies that ensure data and device protection. This IoT platform can be configured with McAfee™ function modules to satisfy diverse vertical applications and scenarios. In addition to data protection, the ability to restore systems to their factory settings on site reduces time and financial costs for both system integrators and end users. Leveraging Acronis' award-winning technologies, Acronis OEM solutions are specifically designed to satisfy the needs of OEMs.



### Product Offerings

## Acronis

## McAfee™

True Image 2016 Personal	Application Control with ePO	Embedded Control	Integrity Control
31WPSALO16	31WPSMAP01	31WPSMEC01	31WPSMIC01
1 WISE Point (Perpetual)	3 WISE Points (Perpetual)	6 WISE Points (Perpetual)	15 WISE Points (Perpetual)



# WISE-PaaS Marketplace

## Discovering and Shopping for Your Own IoT Deployments

The WISE-PaaS Marketplace is an online software store that features Advantech's exclusive software services, diverse IoT cloud services, IoT security services, WISE-PaaS IoT software services, and solution packages pre-packaged into Advantech Edge Intelligence Servers (EIS). The WISE-PaaS Marketplace also integrates IoT partners' cloud and software solutions to accelerate the development of tools for upgrading existing systems to the cloud. Customers can subscribe to WISE-PaaS Marketplace services using WISE-Points provided with WISE-PaaS VIP membership packages to obtain cloud-based software solutions that facilitate innovation for the IoT.



### Cloud Services

Empowered by Microsoft Azure and Arm Pelion Cloud solutions to provide cloud infrastructure and pre-configured services

### Security Services

Integrated with McAfee™ and Acronis solutions for secure data transmissions and centralized management

### WISE-PaaS IoT Services

Diverse mature software platform services for various domain-focused solutions aimed at vertical markets

### Solution Packages

Pre-configured solution packages featuring cloud, security, and WISE-PaaS IoT services for each domain-focused solution

## Service Highlights



### Solution Incubation

Diverse WISE-PaaS and WebAccess software and services



### Authorized Distribution

Microsoft Azure, Arm Pelion Cloud, McAfee™ and Acronis service sources



### Pre-Configured Packages

Integrated cloud, security, and WISE-PaaS software packages that satisfy your needs



### Third-Party PaaS Services

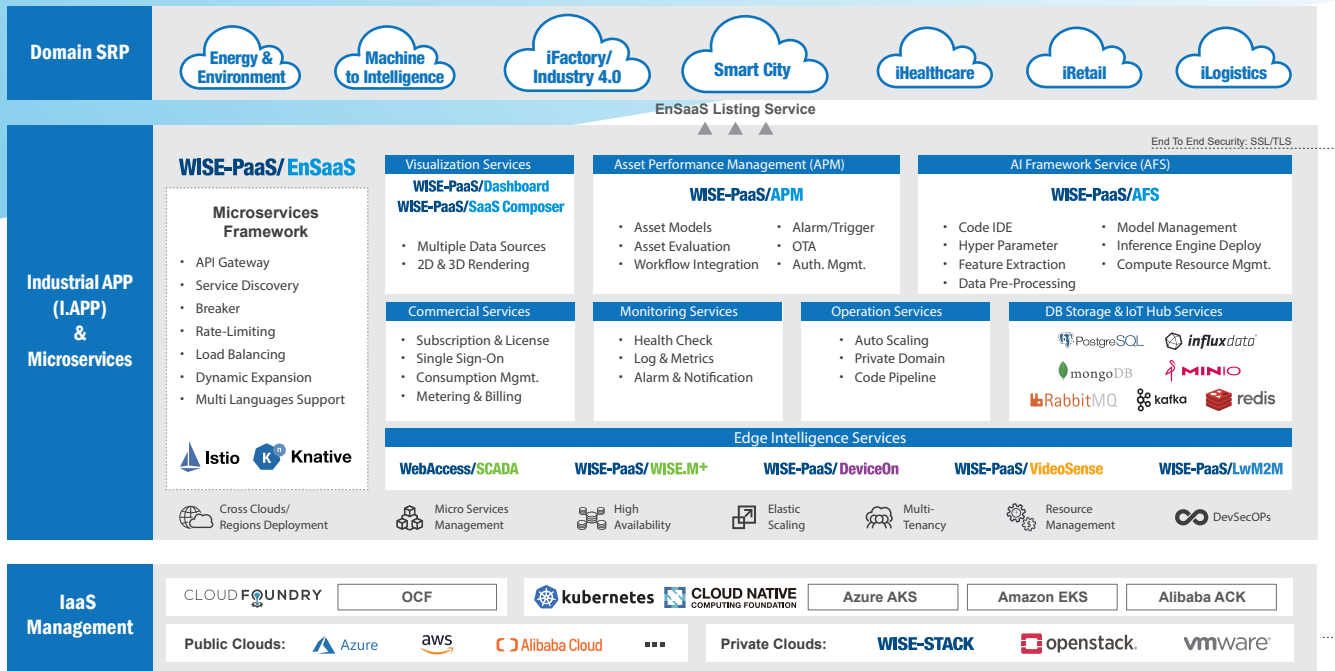
Exclusive domain-focused applications for various vertical markets

# Advantech WISE-PaaS Ecosystem

Buy, Deploy, and Customize Your Industrial Software Needs

Advantech's WISE-PaaS ecosystem features a flexible and expandable architecture that facilitates the seamless integration of diverse cloud solutions and solution-ready packages (SRP) offered at the WISE-PaaS Marketplace. Customers who join the WISE-PaaS Alliance, Advantech's IoT partnership program for resolving IoT application challenges, can access the WISE-PaaS Marketplace and select software packages via WISE-Point. Customers can choose from a variety of effective solutions, purchase a standard suite for creating unique solutions, or combine standard and purpose-built packages to customize an IoT solution according to their specific requirements and usage conditions. With WISE-PaaS Marketplace, Advantech provides customers with the tools for easily upgrading from existing systems to a cloud-based infrastructure.

## WISE-PaaS 4.0 Architecture with Microservices & I.APP



v.20190710.2

### WISE-PaaS/DeviceOn Software



#### WISE-Agent

- Open and standard framework
- Default plugin offering for standard protocols
- Software SDK for legacy support



#### WISE-PaaS/DeviceOn

- Remote IoT devices operation management
- Automated bringing IoT devices online and control
- OTA software/firmware update at a scale



#### WISE-PaaS/OTA

- Centralized remote application and firmware updates
- Download and deploy scheduling for planned upgrades
- Support rollbacks



#### WISE-PaaS/Security

- Centralized security management
- Flexible security modules
- Threat prevention on potential malware in real-time

### WISE-PaaS Application and Cloud Software



#### WebAccess/SCADA

- Web-based configuration and free management for web clients
- Cross-browser dashboard with 40 built-in widgets
- Supports ample protocols and drivers



#### WebAccess/HMI

- Programmable logic controller (PLC) driver support
- Easily integrate protocols
- Friendly development interface



#### WISE-PaaS/VideoService

- Supports standard ONVIF IP cameras
- Provides Dash, HLS and RTMP streaming protocol
- Offers RESTful APIs for web/mobile application integration



#### WISE-PaaS/EnSaaS

- Connect, monitor, and manage millions of IoT assets
- Managed SQL, NoSQL, and time-series databases
- Visualization dashboard for deriving actionable insights

# WISE-PaaS VIP Alliance

One Alliance, One Network, Limitless Opportunities

Co-create IoT domain-specific solutions and enjoy business growth through Advantech networking and marketing resources. Advantech has launched the WISE-PaaS Alliance as an IoT partner program designed to connect partners, cultivate joint vertical solutions, and encourage strategic co-marketing. Being a member of the WISE-PaaS Alliance connects partners to diverse IoT resources and provides access to various vertical IoT markets.

## Sell to Grow

- Publish I.APP on the Marketplace
- Gain international promotion and orders



## Alliance Network

- Attend Advantech IoT Partner Conferences
- Business networking through 1-on-1 meetings
- Co-marketing and case studies



## Speed to Market

- Get the best discount for 150+ IoT Solutions
- Instant purchase with one click
- Business consultation and technical training



## WISE-PaaS VIP Package

Package	Pricing	EIoT P/N	Certified Training & Consulting Service	Business Network & Co-Marketing
Premier	<b>USD 40,000</b> 4,000 WISE Points +1,000 FREE Points	9806WSPA1A	Training for 5 engineers 10-hour consultation	<input checked="" type="checkbox"/>
VIP	<b>USD 20,000</b> 2,000 WISE Points	9806WSPA0A	Training for 2 engineers 5-hour consultation	<input checked="" type="checkbox"/>
Regular	<b>USD 1,000</b> 100 WISE-Points	9806WSPAP1	N/A	N/A



# WISE-PaaS/ DeviceOn

## Power Up IoT Devices with 24/7 Operation Management



### Regional Service & Customization Centers

<b>China</b>   Kunshan 86-512-5777-5666	<b>Taiwan</b>   Taipei 886-2-2792-7818	<b>Netherlands</b>   Eindhoven 31-40-267-7000	<b>Poland</b>   Warsaw 00800-2426-8080	<b>USA</b>   Milpitas, CA 1-408-519-3898
--	---	--	---	---

### Worldwide Offices

#### Greater China

<b>China</b>	Toll Free	800-810-0345
Beijing		86-10-6298-4346
Shanghai		86-21-3632-1616
Shenzhen		86-755-8212-4222
Chengdu		86-28-8545-0198
Hong Kong		852-2720-5118

<b>Taiwan</b>	Toll Free	0800-777-111
Taipei & IoT Campus		886-2-2792-7818
Taichung		886-4-2372-5058
Kaohsiung		886-7-392-3600

#### Middle East and Africa

Israel	072-2410527
--------	-------------

#### Asia

<b>Japan</b>	Toll Free	0800-500-1055
Tokyo		81-3-6802-1021
Osaka		81-6-6267-1887
Nagoya		81-0800-500-1055

<b>Korea</b>	Toll Free	080-363-9494/5
Seoul		82-2-3660-9255

<b>Singapore</b>	Singapore	65-6442-1000
------------------	-----------	--------------

<b>Malaysia</b>	Kuala Lumpur	60-3-7725-4188
	Penang	60-4-537-9188

<b>Thailand</b>	Bangkok	66-02-2488306-9
-----------------	---------	-----------------

<b>Vietnam</b>	Hanoi	84-24-3399-1155
----------------	-------	-----------------

<b>Indonesia</b>	Jakarta	62-21-751-1939
------------------	---------	----------------

<b>Australia</b>	Toll Free	1300-308-531
	Melbourne	61-3-9797-0100

<b>India</b>	Bangalore	91-80-2545-0206
	Pune	91-94-2260-2349

#### Europe

<b>Netherlands</b>	Eindhoven	31-40-267-7000
	Breda	31-76-523-3100

<b>Germany</b>	Toll Free	00800-2426-8080/81
	Munich	49-89-12599-0
	Düsseldorf	49-2103-97-855-0

<b>France</b>	Paris	33-1-4119-4666
---------------	-------	----------------

<b>Italy</b>	Milan	39-02-9544-961
--------------	-------	----------------

<b>UK</b>	Newcastle	44-0-191-262-4844
	London	44-0-870-493-1433

<b>Spain</b>	Madrid	34-91-668-86-76
--------------	--------	-----------------

<b>Sweden</b>	Stockholm	46-0-864-60-500
---------------	-----------	-----------------

<b>Poland</b>	Warsaw	48-22-31-51-100
---------------	--------	-----------------

#### Russia

Moscow	8-800-555-01-50
St. Petersburg	7-812-332-5727; 7-921-575-1359

<b>Czech Republic</b>	Ústí nad Orlicí	420-465-524-421
-----------------------	-----------------	-----------------

<b>Ireland</b>	Galway	353-91-792444
----------------	--------	---------------

#### Americas

<b>North America</b>	Toll Free	1-888-576-9668
	Cincinnati	1-513-742-8895
	Milpitas	1-408-519-3898
	Irvine	1-949-420-2500
	Ottawa	1-815-433-5100

<b>Brazil</b>	Toll Free	0800-770-5355
	São Paulo	55-11-5592-5367

<b>Mexico</b>	Toll Free	1-800-467-2415
	Mexico City	52-55-6275-2727



Enabling an Intelligent Planet

[www.advantech.com](http://www.advantech.com)

Please verify specifications before ordering. This guide is intended for reference purposes only. All product specifications are subject to change without notice. No part of this publication may be reproduced in any form or by any means, electronic, photocopying, recording or otherwise, without prior written permission of the publisher. All brand and product names are trademarks or registered trademarks of their respective companies. © Advantech Co., Ltd. 2019



860000500