

Industrial Communication

Providing Interconnected Solutions for
Enabling an Intelligent Planet



- Industrial Ethernet Switches
- Industrial Protocol Gateways
- Industrial Device Servers
- Industrial Cellular Routers
- Industrial Wireless Solutions
- Industrial Device Connectivity
- Industrial Fiber and PoE



ADVANTECH

Enabling an Intelligent Planet

www.advantech.com

Industrial Communication in the IoT Era

Providing Interconnected Solutions for Advantech's Mission of Enabling an Intelligent Planet

In the age of Internet of Things (IoT), the trend in industrial communication is for all devices, equipment, and machines to be able to connect and communicate with each other to increase productivity, efficiency, and scalability. The core mission of Advantech's iConnectivity Group is to offer the best-in-class industrial communication solutions including both wired and wireless technologies that can truly help users leverage the full potential of IoT in the most efficient and productive way.



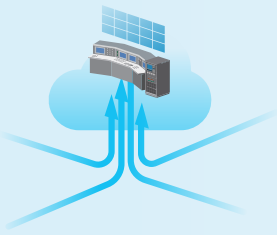
Advantech Worldwide Ranking

- No.7 for Industrial Ethernet Infrastructure Market
- No. 3 for Router Market

IHS Markit



Our Technologies



Intelligent Connectivity Software

Advantech intelligent connectivity software platform provides provisioning and management software, aiming at serving users a tailored management solution based on different user scenarios.

- WebAccess/DMP for provisioning and managing status of each routing device and application
- WebAccess/NMS for monitoring the interconnectivity status of the whole network system
- WebAccess/VPN for remote asset control and management



Network Edge

Advantech's cellular routing solutions open up endless IoT possibilities. Advantech's cellular routers support direct communication between MQTT-enabled devices and the cloud. Built-in Node-RED technology enables smart data processing for fast dashboard development and monitoring using Advantech's WISE/PaaS management software cloud solution.

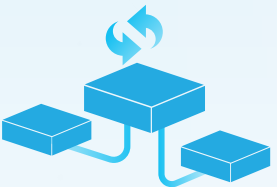
- Support for inter-operation with global 5G/LTE/3G coverage
- Cyber security protection by firewall, NAT, and VPN
- Intelligent gateway support for LoRaWAN, or Mesh networks for Industrial IoT
- Intelligent ODB cellular gateway supports G5 CatM1



Wired and Wireless Network Infrastructure

Advantech provides a comprehensive product portfolio to help users build a robust, secure and scalable wired or wireless networking infrastructure.

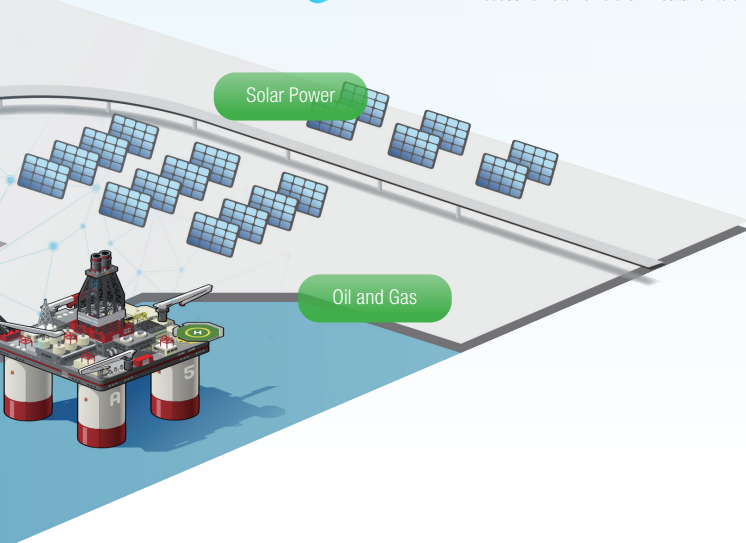
- Supports various industrial Ethernet protocols, such as TCP/IP, Ethernet/IP, PROFINET, CC-link, ODVA, etc.
- Compliant with C1D2, ATEX, IECEx certifications for hazardous environments
- Cyber security protection within the network
- Layer 3 Routing Protocols: RIP, OSPF, and VRRP
- Advantech's patented IXM technology for rapid deployment, saving up to 90% of engineering time and resources
- Advantech security gateway with firewall and Ethernet switch with security pack protects against internal and external cyber attacks



Protocol and Interface Conversion Solutions

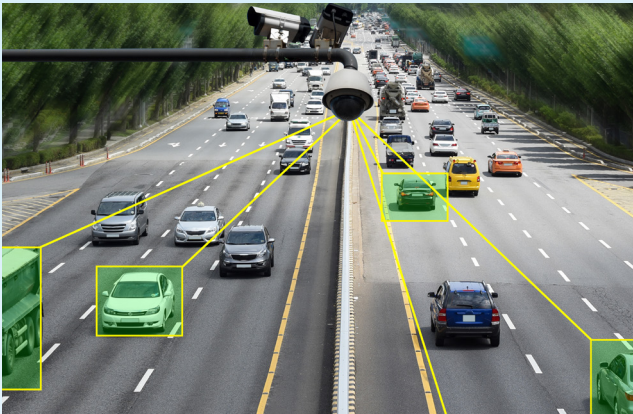
Advantech offers numerous wired and wireless products to convert different industrial protocols and interfaces to modern networking systems to avoid a complete overhaul of existing equipment & devices, saving cost and avoiding software programming errors.

- Supports various industrial Ethernet protocols including TCP/IP, Ethernet/IP, PROFINET, BACnet, OPC UA and more
- Surge protection and field isolation
- Connect to edge sensors via LoRaWAN, MESH technologies
- Access remote vehicle OBD data for telematics services providers (TSP) and fleet management applications



Advancing Key Growth Areas in Industry 4.0, Industrial Equipment Manufacturing, Energy & Environment and, Transportation

Driven by the convergence of information technology (IT) and operational technology (OT), the Industrial Internet of Things (IIoT) is a matrix of networks connecting equipment and devices, collecting data via sensors and integrating it into a platform as a service business model to create new opportunities and possibilities. Advantech focuses on four go-to-market sectors - general automation, iFactory, industrial equipment manufacturing, and industrial infrastructure to fulfill customers' diverse application needs.



Railway Systems

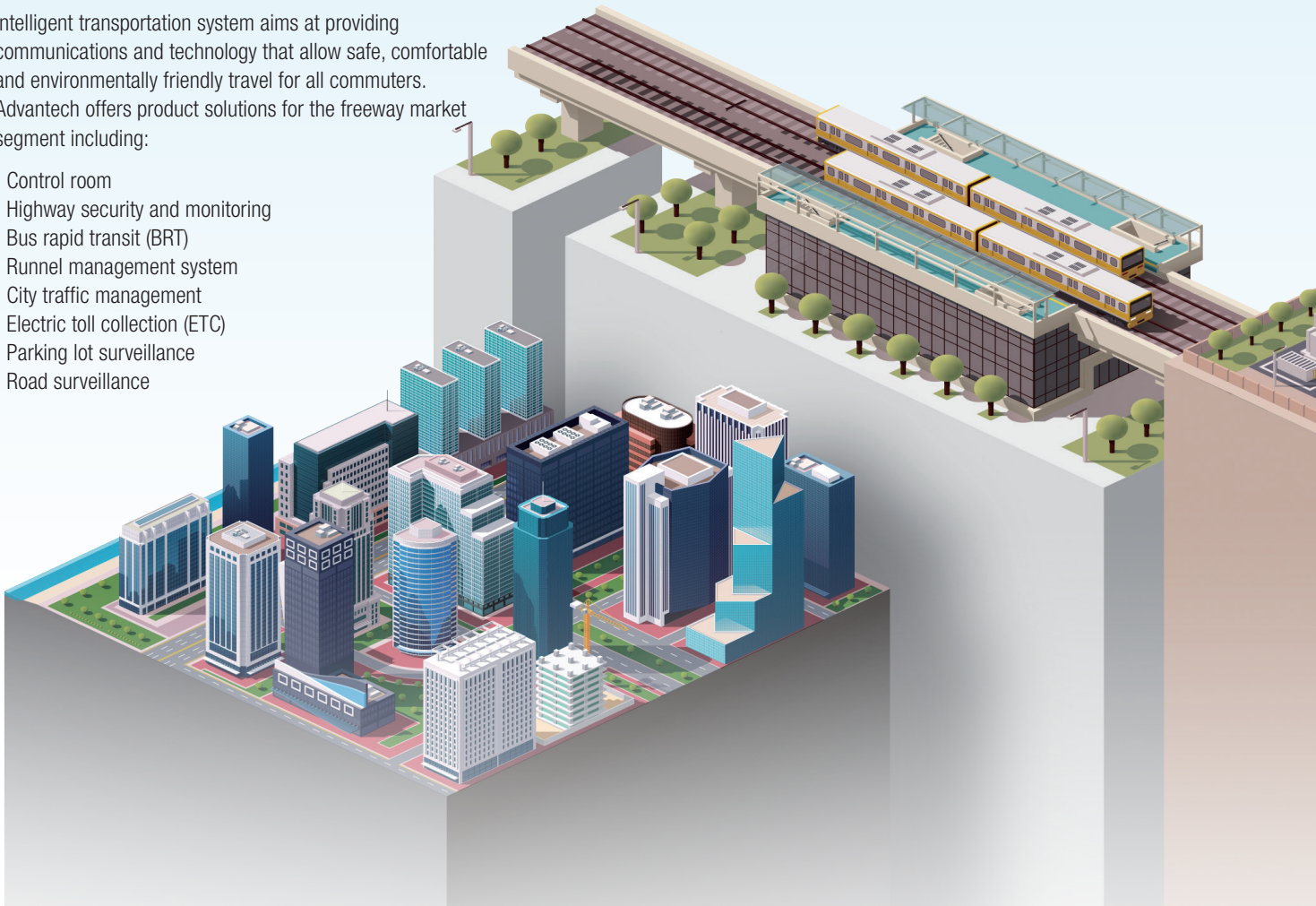
Advantech provides a reliable network service with its rugged, high ECM duration hardware designed for high vibration environments. Its software management, along with redundant functionality hardware provides high quality communications ideally suited for railway systems.

- Passenger information system
- Rolling stock communication
- Automatic fare collection system
- Wayside control
- Station control room
- Train-to-ground communication
- Backbone network system

Intelligent Transportation Systems

Intelligent transportation system aims at providing communications and technology that allow safe, comfortable and environmentally friendly travel for all commuters. Advantech offers product solutions for the freeway market segment including:

- Control room
- Highway security and monitoring
- Bus rapid transit (BRT)
- Tunnel management system
- City traffic management
- Electric toll collection (ETC)
- Parking lot surveillance
- Road surveillance





Machine and Factory Automation

Ethernet networking offers a reliable and open network infrastructure that allows the various systems used with today's machine and factory automation applications to communicate efficiently, resulting in a highly synchronized operation. Advantech is here to help to achieve high scale volume production goals and raise market competitiveness.

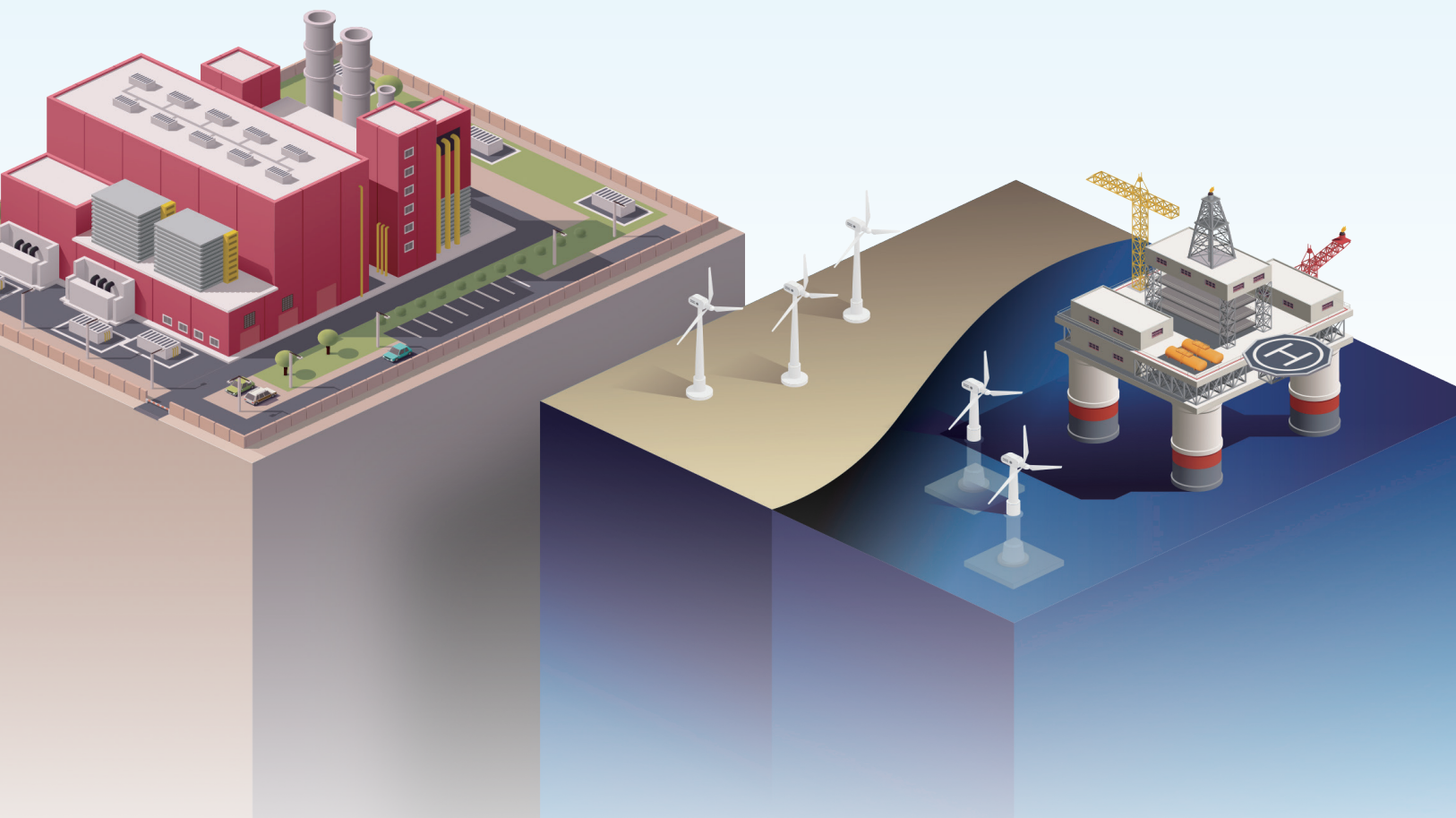
- Control room
- Semi-conductor
- Network backbone system
- Optimize automation system
- Warehouse management
- Auto-guided vehicle (AGV)



Environment and Energy

Advantech provides industrial communication solutions to build automated systems for the real-time central monitoring of a variety of field data acquired from remote locations. Also, Advantech has an excellent reputation for developing environment and facility management systems(EMS), allowing users to monitor and operate processes anytime anywhere.

- Water and wastewater treatment
- Disaster prevention
- Smart grid
- Oil and gas
- Wind power transmission
- Solar power transmission
- Intelligent agriculture



Seamless Data Connectivity from the Network Edge to the Core

Industrial Communication

Advantech leverages over 35 years of industry experience to develop reliable wired and wireless communication solutions for mission critical applications. These products include industrial Ethernet switches, industrial Fieldbus gateways, Modbus gateways, cellular IP gateways, cellular routers, wireless access points/clients, media converters, and serial device servers, all of which contribute to securely transmitting data, and monitoring and controlling networked devices.



Intelligent Connectivity Software

WebAccess/DMP



WebAccess/DMP

Device Management and Provisioning

- Remote router management and application delivery
- Device health monitoring and statistics
- RESTful APIs
- Zero-touch provisioning for mass deployment
- Multi-tenancy options
- Supports cloud & on-premise versions

WebAccess/NMS



WebAccess/NMS

Network Management System

- Cross-browser compatible
- Online Google Maps and offline OpenStreetMap support
- Dynamic connectivity indication
- Automatically discovers and maps network topology
- PoE, ring, wireless, cellular connection indication
- Monitor and manage networks remotely

WebAccess/VPN



WebAccess/VPN

Advanced Secure Networking Platform

- Remote access solution for routers
- Secure private networks in Internet
- Encrypted & reliable communication, centrally defined VPN topology
- Managed LAN, 1:1 NAT modes, firewall & access control
- User-friendly management, easy deployment

Communication Gateways



NEW



ICR-4453

New 5G Ready High Speed Router Platform & Edge Computing Gateway

- 5G NR cellular connectivity
- Quad-Core CPU & enhanced memory, docker ready
- 2 x SIM, eSIM, 5 x Gigabit Ethernet with optional 4 x PoE
- SFP fiber port, USB, GNSS Receiver, RS-232, RS-485, CAN bus, 2 x DI, 2 x DO
- Optional dual band WiFi 802.11AC



ICR-2000/2400 Series

Industrial Entry 4G LTE Router & Gateway

- LTE Cat.4, 1 x SIM or 2 x SIM
- 1 or 2 x Ethernet 10/100
- 1 DI/DO
- RS-232/485 (optional)
- Robust metal cover with wall mount option
- Advanced security features, VPN, Open Linux OS



ICR-3200 Series

Industrial IoT 4G LTE Router & Gateway

- LTE Cat.4 with 3G/2G fallback, 2 x SIM, eSIM
- Powerful CPU with 1.3 GB storage to host customer SW applications, Python, Node-RED
- 2 x Ethernet 10/100, 1 x RS-232, 1 x RS-485 and I/O
- Optional - Wi-Fi 802.11ac, Bluetooth v5.1, GNSS Receiver
- Advanced security features, VPN, Open Linux OS



SmartFlex SR30x Series

Flexible, Modular 4G LTE Router & Gateway

- LTE Cat.3 with 3G/2G fallback, 2x SIM, GNSS Receiver
- 2 x Ethernet 10/100 (Independent or switched)
- Optional - 5 x Ethernet, PoE, RS-232/RS-422/ RS-485, Wi-Fi
- Advanced security features, VPN, Open Linux OS
- E-mark, UL CID2, ATEX certifications

Communication Gateways & I/O Nodes



WISE-6610 LoRaWAN Gateway and LoRaWAN I/O Node

- Long-distance wireless data transmission and third-party LoRaWAN device compliant
- Embedded network server and Node-RED with lightweight MQTT IoT protocol
- LoRaWAN gateway design with backup function
- LoRaWAN node design with IP66-rated reinforced-fiber polyester PBT enclosure

Industrial Wireless AP/Clients

NEW



EKI-6333AC/EKI-136X Series/EKI-9502G

802.11AC Wi-Fi AP/ Bridge/ Client/ EN50155 Router

- Supports 802.11 a/b/g/n/ac MIMO 2T2R
- EKI-136X series supports Wi-Fi or LAN to Wi-Fi serial device
- Supports secure access with WEP, WPA/WPA2-Personal, WPA/WPA2-Enterprise
- Wireless band 2.4G/5G selective/dual
- Provides web-based configuration
- Cellular connectivity with dual SIM card design for each cellular module (EKI-9502G)

Protocol Gateways



EKI-1242 Series
Modbus RTU/TCP to Various Industrial Protocols Fieldbus Gateway

- Dual power inputs
- Designed for protocol extensibility and adaption
- Built-in real-time diagnostics
- Models support a wide operating temperature range

Modbus Gateways/ Routers



EKI-1220(R) Series
1/ 2/ 4-Port Modbus Gateway/ Router

- Integrated stateful firewall for protection from intrusion
- Supports redundancy-enhanced Modbus ID
- Integrates Modbus TCP and Modbus RTU/ ASCII network
- Optional fiber optics connectivity (1-port ST or 2-port SC)

Serial Device Servers



EKI-1500 Series
1/2/4/8/16-Port RS-232/ 422/ 485 Rackmount Serial Device Server

- Connect up to 8/ 16-port RS-232/ 422/ 485 devices directly to TCP/ IP networks
- High-speed baud rates (50 bps~976.5 Kbps)
- VCOM, TCP server, TCP client, UDP, and RFC2217 modes
- Optional fiber optics connectivity (1-port SC)

Entry-Level Device Servers



EKI-1511 Series
1-Port Device Server

- L models support RS-232
- X models support RS-422/ 485
- Models support wide operating temperature
- Robust stainless steel exterior with minimalist design

TSN Ethernet Switch



EKI-8510G
Industrial Time-Sensitive Networking (TSN) Ethernet Switch

- Fully layer 2 managed features
- IEEE 802.1AS Time Synchronization
- IEEE 802.1Qbu Frame Preemption
- IEEE 802.1Qbv Time Aware Shaper
- IEEE 802.1CB Seamless Redundancy

L3 Managed Switches



EKI-9700/ 9600 Series
Industrial Layer 3 Managed Switch

- Static routing/ NAT (EKI-9612G, EKI-9628G)
- Static routing, RIP v1/ v2, OSPF v2, VRRP (EKI-9728G)
- Supports up to 4 x 10GbE fiber ports (EKI-9728G)
- -40 to 75°C (-40 ~ 167°F) wide operating temperature

L2 Managed Switches



EKI-7700 Series
Industrial Managed Switch

- High variety of port combinations
- Supports Advantech Security Pack for cyber security
- IXM function enables fast deployment
- IP30-rated chassis design
- EN50121-4 and NEMA TS-2 certified



EKI-5000 Series
Industrial Entry-level Managed Switch

- Provides commonly used managed switch features
- ATEX, C1D2 certification
- Supports Advantech IXM/NMS technology
- Supports industrial protocols (EtherNet/IP, PROFINET Modbus/TCP)
- Supports -40 to 75°C (-40 ~ 167°F) wide operating temperatures

EN50155 Rolling Stock Switches



EKI-9500 Series
8/10/12/16/28-Port EN 50155 Rolling Stock Switch

- EN 50155, EN 50121-3-2, IEC 61373 compliant
- PoE/ PoE+ models are available
- Various port combinations with Fast Ethernet/ Giga Ethernet options
- IP40/ IP54/ IP67 and rugged housing

IEC 61850-3 Power Energy Switches



EKI-9200 series
Industrial IEC 61850-3 Switches

- IEC 61850-3 & IEEE1613 certified
- Dual power inputs (90~264V AC / 88-370V DC) models available
- Flexible port options, providing up to 20 x fiber ports
- Wide operating temperature range -40 to 85°C (-40 ~ 185°F)

10G Ethernet Solutions



EKI-7412G-4X/7428G-4X 10G Series
Network Management System

- 10G uplink bandwidth support
- Powerful and reliability managed features
- 1U 19 inch rack-mount design
- Up to 60°C (140 °F) operating temperature

90W High Power PoE Solutions



EKI-7712G-4FMPI/ EKI-2701MPI
Industrial 802.3bt Managed Switch and Injector

- Up to 90W power transmission via 4-wire cable
- IEEE 802.3af/at/bt compliant
- Wide operation temperature -40 to 70°C (-40 ~ 158°F)
- Full layer 2 managed features (EKI-7712G-4FMPI)

10/100/1000 Mbps PoE(+) Media Converters



EKI-2741 Series & IMC-390 Series

- Supports IEEE802.3 af/at PoE(+) standards
- Serves as power sourcing equipment (PSE)
- Designed with 10/100/1000Base-T and SFP or a fixed fiber transceiver

Industrial 15/30/60/90W PoE Injectors



EKI-2701 Series

- Supports IEEE802.3 at/af/bt standards
- Serves as power sourcing equipment (PSE)
- Extended operating temperature -40 to 75°C (-40 ~ 167°F)
- EKI-2701MP1-5G supports 10/ 100/ 1G/ 2.5G/ 5G multi-speed data transmission

Smart Dual Channel 802.3bt Media Converters



IMC-595MPI

- Smart media converter with SFP uplink port and .bt PoE port x 2
- Configurable PoE power allocation with max. 180W power
- Configurable PoE behavior to reboot PD and notify link down
- Switch between switch & injector modes

Managed 10G Media Converters and Chassis



IMC-610-A & IMC-700 Series

- 10G stand alone media converter (IMC-610-A)
- Modular design with chassis from 3/6/20 slots (IMC-790-A)
- SNMP manageable via iView software featuring massive provision and monitoring
- Dual (redundant) AC and/or DC hardswappable power supplies

Industrial Ethernet Solutions

EN50155 Ethernet Switches



Model Name		EKI-9512E-4GETB EKI-9512G-4GETB	EKI-9528E-12GMPW EKI-9528E-12GMPX	EKI-9528E-8GMPW EKI-9528E-8GMPX	EKI-9528G-4GMPW EKI-9528G-4GMPX	EKI-9528E-12GMW EKI-9528E-12GMX	EKI-9528E-8GMW EKI-9528E-8GMX	EKI-9528G-4GMW EKI-9528G-4GMX
Description		EN50155 12-Port Ethernet Train Backbone Router	EN50155 28-Port L2 Managed PoE Switch	EN50155 28-Port L2 Managed PoE Switch	EN50155 28-Port L2 Managed PoE Switch	EN50155 28-Port L2 Managed Switch	EN50155 28-Port L2 Managed Switch	EN50155 28-Port L2 Managed Switch
Interface	Number of Ports	12	28	28	28	28	28	28
	10/100Base-TX	8 (EKI-9512E-4GETB)	-	-	-	16	20	-
	100BaseFX	-	-	-	-	-	-	-
	10/100/1000Base-TX	8 (EKI-9512G-4GETB)	4 (EKI-9528E-12GMPX)	4 (EKI-9528E-8GMPX)	4 (EKI-9528E-8GMPX)	8 (EKI-9528E-12GMW) 12 (EKI-9528E-12GMX)	4 (EKI-9528E-8GMW) 8 (EKI-9528E-8GMX)	24 (EKI-9528G-4GMW) 28 (EKI-9528G-4GMX)
	10/100/1000Base-TX with Bypass function	4	4 (EKI-9528E-12GMPW)	4 (EKI-9528E-8GMPW)	4 (EKI-9528E-8GMPW)	4 (EKI-9528E-12GMW)	4 (EKI-9528E-8GMW)	4 (EKI-9528G-4GMW)
	PoE(10/100Mbps)	-	16	20	-	-	-	-
	PoE(10/100/1000Mbps)	-	8	4	24	-	-	-
	DI/DO	-	-	-	-	-	-	-
	Console	✓	✓	✓	✓	✓	✓	✓
Network Management	Redundancy	✓	✓	✓	✓	✓	✓	✓
	Diagnostics	✓	✓	✓	✓	✓	✓	✓
	VLAN	✓	✓	✓	✓	✓	✓	✓
	Configuration	✓	✓	✓	✓	✓	✓	✓
	SNMP	✓	✓	✓	✓	✓	✓	✓
	Security	✓	✓	✓	✓	✓	✓	✓
	Traffic Control	✓	✓	✓	✓	✓	✓	✓
Power	24-48V _{DC}	-	-	-	-	-	-	-
	72-110V _{DC}	-	-	-	-	-	-	-
	24-110V _{DC}	✓	✓	✓	✓	✓	✓	✓
	IP level	IP67	IP54	IP54	IP54	IP54	IP54	IP54
Rolling Stock Application	Ethernet Train Backbone (IEC61375-2-3 & -2-5)	✓	-	-	-	-	-	-
	EN50155	✓	✓	✓	✓	✓	✓	✓
	EN50121-3-2	✓	✓	✓	✓	✓	✓	✓
	EN61373	✓	✓	✓	✓	✓	✓	✓

EN50155 Ethernet Switches



Model Name		EKI-9516E-4GMPW EKI-9516E-4GMPX	EKI-9516G-4GMPW EKI-9516G-4GMPX	EKI-9516E-8GMPW EKI-9516E-8GMPX	EKI-9516E-4GMW EKI-9516E-4GMX	EKI-9516G-4GMW EKI-9516G-4GMX	EKI-9512E-4GMPW EKI-9512E-4GMPX	EKI-9512G-4GMPW EKI-9512G-4GMPX
Description		EN50155 16-Port L2 Managed PoE Switch	EN50155 16-Port L2 Managed PoE Switch	EN50155 16-Port L2 Managed PoE Switch	EN50155 16-Port L2 Managed Switch	EN50155 16-Port L2 Managed Switch	EN50155 16-Port L2 Managed PoE Switch	EN50155 16-Port L2 Managed PoE Switch
Interface	Number of Ports	16	16	16	16	16	16	16
	10/100Base-TX	-	-	-	12	-	-	-
	100BaseFX	-	-	-	-	-	-	-
	10/100/1000Base-TX	4 (EKI-9516E-4GMPX)	4 (EKI-9516G-4GMPX)	4 (EKI-9516G-4GMPX)	4 (EKI-9516E-4GMPX)	12 (EKI-9516G-4GMPW) 16 (EKI-9516G-4GMPX)	4 (EKI-9512E-4GMPX)	4 (EKI-9512G-4GMPX)
	10/100/1000Base-TX with Bypass function	4 (EKI-9516E-4GMPW)	4 (EKI-9516G-4GMPW)	4 (EKI-9516G-4GMPW)	4 (EKI-9516E-4GMPW)	4 (EKI-9516G-4GMPW)	4 (EKI-9512E-4GMPW)	4 (EKI-9512G-4GMPW)
	PoE(10/100Mbps)	12	-	8	-	-	8	-
	PoE(10/100/1000Mbps)	-	12	4	-	-	-	8
	DI/DO	-	-	-	-	-	-	-
Console	✓	✓	✓	✓	✓	✓	✓	
Network Management	Redundancy	✓	✓	✓	✓	✓	✓	✓
	Diagnostics	✓	✓	✓	✓	✓	✓	✓
	VLAN	✓	✓	✓	✓	✓	✓	✓
	Configuration	✓	✓	✓	✓	✓	✓	✓
	SNMP	✓	✓	✓	✓	✓	✓	✓
	Security	✓	✓	✓	✓	✓	✓	✓
	Traffic Control	✓	✓	✓	✓	✓	✓	✓
Power	24-48V _{DC}	-	-	-	-	-	-	-
	72-110V _{DC}	-	-	-	-	-	-	-
	24-110V _{DC}	✓	✓	✓	✓	✓	✓	✓
	IP level	IP67	IP67	IP67	IP67	IP67	IP67	IP67
Rolling Stock Application	Ethernet Train Backbone (IEC61375-2-3 & -2-5)	-	-	-	-	-	-	-
	EN50155	✓	✓	✓	✓	✓	✓	✓
	EN50121-3-2	✓	✓	✓	✓	✓	✓	✓
	EN61373	✓	✓	✓	✓	✓	✓	✓

Industrial Ethernet Solutions

EN50155 Ethernet Switches



Model Name		EKI-9512E-4GMW EKI-9512E-4GMX	EKI-9512G-4GMW EKI-9512G-4GMX	EKI-9508E series	EKI-9508G series	EKI-9510E series	EKI-9510G series
Description		EN50155 16-Port L2 Managed Switch	EN50155 16-Port L2 Managed Switch	EN50155 8-Port L2 Ethernet Switch	EN50155 8-Port L2 Ethernet Switch	EN50155 10-Port L2 Ethernet Switch	EN50155 10-Port L2 Ethernet Switch
Interface	Number of Ports	16	16	8	8	8	8
	10/100Base-TX	8	-	△8	-	△8	-
	100BaseFX	-	-	-	-	-	-
	10/100/1000Base-TX	4 (EKI-9512E-4GMPX)	8 (EKI-9512G-4GMPW) 12 (EKI-9512G-4GMPX)	-	△8	-	△8
	10/100/1000Base-TX with Bypass function	4 (EKI-9512E-4GMPW)	4 (EKI-9512G-4GMPW)	-	-	2	2
	PoE(10/100Mbps)	-	-	△8	-	△8	-
	PoE(10/100/1000Mbps)	-	-	-	△8	-	△8
	DI/DO	-	-	-	-	-	-
Console	✓	✓	△	△	△	△	
Network Management	Redundancy	✓	✓	△	△	△	△
	Diagnostics	✓	✓	△	△	△	△
	VLAN	✓	✓	△	△	△	△
	Configuration	✓	✓	△	△	△	△
	SNMP	✓	✓	△	△	△	△
	Security	✓	✓	△	△	△	△
Traffic Control	✓	✓	△	△	△	△	
Power	24-48V _{DC}	-	-	△	△	△	△
	72-110V _{DC}	-	-	△	△	△	△
	24-110V _{DC}	✓	✓	-	-	-	-
	IP level	IP67	IP67	IP40	IP40	IP40	IP40
Rolling Stock Application	Ethernet Train Backbone (IEC61375-2-3 & -2-5)	-	-	-	-	-	-
	EN50155	✓	✓	✓	✓	✓	✓
	EN50121-3-2	✓	✓	✓	✓	✓	✓
	EN61373	✓	✓	✓	✓	✓	✓

L3 Managed Switches



Model Name		EKI-9728G-4X8CI	EKI-9628G-4CI	EKI-9612G-4FI
Description		L3 28-port Managed Switch	L3 28-port Managed Switch	L3 12-port Managed Switch
Interface	Number of Ports	28	28	12
	10/100Base-T (X)	-	-	-
	100BaseFX	-	-	-
	10/100/1000Base-T (X)	16+8 (combo)	24+4 (combo)	8
	1000Base-SX/LX/LHX/XD/ZX/EZX	8 (combo) + 4 x SFP+ (10G)	4 (combo)	4 x SFP
	PoE (10/100 Mbps)	-	-	-
	PoE (10/100/1000 Mbps)	-	-	-
	HSR/PRP	-	-	-
Network Management	Console	✓	✓	✓
	Redundancy	✓	✓	✓
	Diagnostics	✓	✓	✓
	VLAN	✓	✓	✓
	Configuration	✓	✓	✓
	SNMP	✓	✓	✓
	Security	✓	✓	✓
	Traffic Control	✓	✓	✓
Power	12 ~ 48 V DC	-	✓	✓
	24 ~ 110 V DC	-	-	-
	100 ~ 240 V AC	90~264 V _{AC}	-	-
	Relay Output	-	✓	✓
Mechanism	DIN-rail Mount	-	-	✓
	Wall Mount	-	-	✓
	Rack Mount	✓	✓	-
Protection	IP Level	IP30	IP30	IP30
	ESD (Ethernet)	✓	✓	✓
	Surge (EFT for power)	✓	✓	✓
Operating Temperature	Power Reverse	✓	✓	✓
	-10 ~ 60°C (14 ~ 140°F)	-	-	-
	-40 ~ 75°C (-40 ~ 167°F)	-	✓	✓
Certifications	-40 ~ 85°C (-40 ~ 185°F)	✓	-	-
	CE	✓	✓	✓
	FCC	✓	✓	✓
	UL/cUL 60950-1	-	-	-
	Class 1, Division 2	-	-	-
Others	-	✓	✓	
Others	-	LVD 62368-1	NEMA TS2 EN 50121-4 LVD 62368-1	

IEC 61850-3 Managed Industrial Ethernet Switches



Model Name		EKI-9228G-8C0I EKI-9228G-8CMI	EKI-9226G-20F0I EKI-9226G-20FMI
Description		28-port Full Giga Managed Switch	26-port Full Giga Managed Switch
Interface	Number of Ports	28	26
	10/100Base-T (X)	-	-
	100BaseFX	-	-
	10/100/1000Base-T (X)	24 + 8 (combo)	6
	1000Base-SX/LX/LHX/XD/ZX/EZX	8 x SFP (combo)	20 x SFP
	PoE (10/100 Mbps)	-	-
	PoE (10/100/1000 Mbps)	-	-
	HSR/PRP	-	-
Network Management	Console	✓	✓
	Redundancy	✓	✓
	Diagnostics	✓	✓
	VLAN	✓	✓
	Configuration	✓	✓
	SNMP	✓	✓
	Security	✓	✓
	Traffic Control	✓	✓
Power	12 ~ 48 V DC	EKI-9228G-20FMI (48 V _{DC})	EKI-9226G-20FMI (48 V _{DC})
	24 ~ 110 V DC	-	-
	100 ~ 240 V AC	EKI-9228G-20FMI (90 ~ 264 V _{AC})	EKI-9226G-20FOI (90 ~ 264 V _{AC})
	Relay Output	✓	✓
Mechanism	DIN-rail Mount	-	-
	Wall Mount	-	-
	Rack Mount	✓	✓
Protection	IP Level	IP30	IP30
	ESD (Ethernet)	✓	✓
	Surge (EFT for power)	✓	✓
Operating Temperature	Power Reverse	✓	✓
	-10 ~ 60°C (14 ~ 140°F)	-	-
	-40 ~ 75°C (-40 ~ 167°F)	-	-
Certifications	-40 ~ 85°C (-40 ~ 185°F)	✓	✓
	CE	✓	✓
	FCC	✓	✓
	UL/cUL 60950-1	-	✓
	Class 1, Division 2	-	-
Others	-	-	
Others	ICE 61850-3	ICE 61850-3	

Industrial Ethernet Solutions

Managed Ethernet Switches



Model Name		EKI-7428G-4X	EKI-7412G-4XP	EKI-7428G-4CA	EKI-7706E-2F/I	EKI-7706G-2F/I	EKI-7708E-4F/I	EKI-7708G-4F/I	EKI-7708G-2FVI	EKI-7708G-2MI/2SI
Description		24GE+4SFP 10G Managed Switch w/ AC Input	8GE + 4 SFP 10G, PoE 10/100/1000 Managed Switch w/ AC Input	24GE+4SFP Giga Managed Redundant Switch w/ AC Input	4FE+2SFP Giga Managed Redundant Industrial Switch	4GE+2SFP Giga Managed Redundant Industrial Switch	4FE+4SFP Giga Managed Redundant Industrial Switch	4GE+4SFP Giga Managed Redundant Industrial Switch	4GE + 2VDSL+2SFP Giga Managed Redundant Industrial Switch	6GE+2SFP Managed Redundant Industrial Switch
Interface	Number of Ports	28	12	28	6	6	8	8	8	8
	10/100Base-T (X)	-	-	-	4	-	4	-	4	-
	100BaseFX	-	-	-	-	-	-	-	-	-
	10/100/1000Base-T (X)	24	-	24 + 4 (combo)	-	4	-	4	-	6
	1000Base-SX/LX/LHX/ XD/ZX/EZX	4 x SFP+ (10G)	4 x SFP+ (10G)	4 (combo)	2	2	4	4	4 (2SFP+ 2VDSL)	2 (multi/single)
	PoE (10/100 Mbps)	-	-	-	-	-	-	-	-	-
	PoE (10/100/1000 Mbps)	-	8	-	-	-	-	-	-	-
	HSR/PRP	-	-	-	-	-	-	-	-	-
Network Management	Console	✓	✓	✓	✓	✓	✓	✓	✓	✓
	Redundancy	✓	✓	✓	✓	✓	✓	✓	✓	✓
	Diagnostics	✓	✓	✓	✓	✓	✓	✓	✓	✓
	VLAN	✓	✓	✓	✓	✓	✓	✓	✓	✓
	Configuration	✓	✓	✓	✓	✓	✓	✓	✓	✓
	SNMP	✓	✓	✓	✓	✓	✓	✓	✓	✓
	Security	✓	✓	✓	✓	✓	✓	✓	✓	✓
	Traffic Control	✓	✓	✓	✓	✓	✓	✓	✓	✓
Power	12 ~ 48 V DC	-	-	-	✓	✓	✓	✓	✓	✓
	24 ~ 110 V DC	-	-	-	-	-	-	-	-	-
	100 ~ 240 V AC	✓	✓	✓	-	-	-	-	-	-
	Relay Output	-	-	-	✓	✓	✓	✓	✓	✓
Mechanism	DIN-rail Mount	-	-	-	✓	✓	✓	✓	✓	✓
	Wall Mount	-	-	-	✓	✓	✓	✓	✓	✓
	Rack Mount	✓	✓	✓	-	-	-	-	-	-
	IP Level	-	-	-	IP30	IP30	IP30	IP30	IP30	IP30
Protection	ESD (Ethernet)	✓	✓	✓	✓	✓	✓	✓	✓	✓
	Surge (EFT for power)	✓	✓	✓	✓	✓	✓	✓	✓	✓
	Power Reverse	✓	✓	✓	✓	✓	✓	✓	✓	✓
Operating Temperature	-10 ~ 60°C (14 ~ 140°F)	0 ~ 60°C (32 ~ 140°F)	0 ~ 60°C (32 ~ 140°F)	-10 ~ 55°C (14 ~ 131°F)	EKI-7706E-2F	EKI-7706G-2F	EKI-7708E-4F	EKI-7708G-4F	-	-
	-40 ~ 75°C (-40 ~ 167°F)	-	-	-	EKI-7706E-2FI	EKI-7706G-2FI	EKI-7708E-4FI	EKI-7708G-4FI	✓	✓
	-40 ~ 85°C (-40 ~ 185°F)	-	-	-	-	-	-	-	-	✓
Certifications	CE	✓	-	✓	✓	✓	✓	✓	✓	✓
	FCC	✓	✓	✓	✓	✓	✓	✓	✓	✓
	UL/cUL 60950-1	-	-	✓	-	-	-	-	-	-
	Class 1, Division 2	-	-	-	-	-	-	-	-	-
	UL 508	-	-	-	-	-	-	-	-	-
Others	LVD 62368-1	LVD 62368-1	LVD 62368-1	EN50121-4 UL 61010 LVD 62368-1	EN50121-4 UL 61010 LVD 62368-1	NEMA TS2 EN50121-4 UL 61010 LVD 62368-1	NEMA TS2 EN50121-4 UL 61010 LVD 62368-1	NEMA TS2 EN50121-4 UL 61010 LVD 62368-1	LVD 62368-1	

Managed Ethernet Switches



Model Name		EKI-7710E-2C EKI-7710E-2CI	EKI-7710G-2C EKI-7710G-2CI	EKI-7712E-4F EKI-7712E-4FI	EKI-7712G-2FVI	EKI-7712G-4F EKI-7712G-4FI	EKI-7716G-4F4CI	EKI-7720E-4F EKI-7720E-4FI	EKI-7720G-4F EKI-7720G-4FI
Description		8FE+2G Gigabit Managed Redundant Industrial Switch	8GE+2G Gigabit Managed Redundant Industrial Switch/with Wide Temperature	8FE+4SFP Gigabit Managed Redundant Industrial Switch/with Wide Temperature	8GE + 2VDSL+2SFP Giga Managed Redundant Industrial Switch	8G+4G SFP Gigabit Managed Redundant Industrial Switch/with Wide Temperature	8GE+4SFP + 4G Combo Managed Redundant Industrial Switch	16FE+4G SFP Gigabit Managed Redundant Industrial Switch with Wide Temperature	16GE+4G SFP Gigabit Managed Redundant Industrial Switch/with Wide Temperature
Interface	Number of Ports	10	10	12	12	12	16	20	20
	10/100Base-T (X)	8	-	8	-	-	-	16	-
	100BaseFX	-	-	-	-	-	-	-	-
	10/100/1000Base-T (X)	2 (combo)	8 + 2 (combo)	-	8	8	8 + 4 (Combo)	-	16
	1000Base-SX/LX/LHX/XD/ZX/EZX	2 (combo)	2 (combo)	4	4 (2SFP+2VDSL)	4	4 + 4 (Combo)	4	4
	PoE (10/100 Mbps)	-	-	-	-	-	-	-	-
	PoE (10/100/1000 Mbps)	-	-	-	-	-	-	-	-
	D1/DO	-	-	-	-	-	-	-	-
Network Management	Console	✓	✓	✓	✓	✓	✓	✓	✓
	Redundancy	✓	✓	✓	✓	✓	✓	✓	✓
	Diagnostics	✓	✓	✓	✓	✓	✓	✓	✓
	VLAN	✓	✓	✓	✓	✓	✓	✓	✓
	Configuration	✓	✓	✓	✓	✓	✓	✓	✓
	SNMP	✓	✓	✓	✓	✓	✓	✓	✓
	Security	✓	✓	✓	✓	✓	✓	✓	✓
Power	Traffic Control	✓	✓	✓	✓	✓	✓	✓	✓
	12 ~ 48 V DC	✓	✓	✓	✓	✓	✓	✓	✓
	24 ~ 110 V DC	-	-	-	-	-	-	-	-
	100 ~ 240 V AC	-	-	-	-	-	-	-	-
Mechanism	Relay Output	✓	✓	✓	✓	✓	✓	✓	✓
	DIN-rail Mount	✓	✓	✓	✓	✓	✓	✓	✓
	Wall Mount	✓	✓	✓	✓	✓	✓	✓	✓
	Rack Mount	-	-	-	-	-	-	-	-
Protection	IP Level	IP30	IP30	IP30	IP30	IP40	IP30	IP30	IP30
	ESD (Ethernet)	✓	✓	✓	✓	✓	✓	✓	✓
	Surge (EFT for power)	✓	✓	✓	✓	✓	✓	✓	✓
Operating Temperature	Power Reverse	✓	✓	✓	✓	✓	✓	✓	✓
	-10 ~ 60°C (14 ~ 140°F)	EKI-7710E-2C	EKI-7710G-2C	✓	-	EKI-7712G-4F	-	EKI-7720E-4F	EKI-7720G-4F
	-40 ~ 75°C (-40 ~ 167°F)	EKI-7710E-2CI	EKI-7710G-2CI	✓	✓	EKI-7712G-4FI	EKI-7716G-4FI	EKI-7720E-4FI	EKI-7720G-4FI
Certifications	-40 ~ 85°C (-40 ~ 185°F)	-	-	-	-	-	-	-	-
	CE	✓	✓	✓	✓	✓	✓	✓	✓
	FCC	✓	✓	✓	✓	✓	✓	✓	✓
	UL/cUL 60950-1	-	-	-	-	-	-	-	-
	Class 1, Division 2	-	-	-	-	-	-	-	-
	UL 508	✓	✓	✓	-	✓	-	✓	✓
Others	NEMA TS2 EN50121-4 LVD 62368-1	NEMA TS2 EN50121-4 LVD 62368-1	NEMA TS2 EN50121-4 LVD 62368-1	MENA TS2 EN50121-4 LVD 62368-1	NEMA TS2 EN50121-4 LVD 62368-1	NEMA TS2 EN50121-4 UL 61010 LVD 62368-1	NEMA TS2 EN50121-4 LVD 62368-1	NEMA TS2 EN50121-4 LVD 62368-1	

Industrial Ethernet Solutions

Entry-level Managed Switches



Model Name		EKI-5526I-MB EKI-5526I-PN EKI-5526I-EI	EKI-5528I-MB EKI-5528I-PN EKI-5528I-EI	EKI-5626CI-MB EKI-5626CI-PN EKI-5626CI-EI	EKI-5629CI-MB EKI-5629CI-PN EKI-5629CI-EI	EKI-5726I-MB	EKI-5728I-MB	EKI-5729I-MB
Description		16FE Entry-level Managed Switch	8FE Entry-level Managed Switch	16FE+2GE Combo Ports Entry-level Managed Switch	8FE+2GE Combo Ports Entry-level Managed Switch	16GE Entry-level Managed Switch	8GE Entry-level Managed Switch	8GE + 2 SFP Entry-level Managed Switch
Interface	Number of Ports	16	8	16+2	8+2	16	8	8+2
	10/100Base-T (X)	16	8	16	8	-	-	-
	100BaseFX	-	-	-	-	-	-	-
	10/100/1000Base-T (X)	-	-	2/2 (combo)	2/2 (combo)	16	8	8
	1000Base-SX/LX/LHX/XD/ZX/EZX	-	-	2/2 (combo)	2/2 (combo)	-	-	2
	PoE (10/100 Mbps)	-	-	-	-	-	-	-
	PoE (10/100/1000 Mbps)	-	-	-	-	-	-	-
	DI/DO	-	-	-	-	-	-	-
Console	-	-	-	-	-	-	-	
Network Management	Redundancy	✓	✓	✓	✓	✓	✓	✓
	Diagnostics	✓	✓	✓	✓	✓	✓	✓
	VLAN	✓	✓	✓	✓	✓	✓	✓
	Configuration	✓	✓	✓	✓	✓	✓	✓
	SNMP	✓	✓	✓	✓	✓	✓	✓
	Security	✓	✓	✓	✓	✓	✓	✓
	Traffic Control	✓	✓	✓	✓	✓	✓	✓
Power	12 ~ 48 V DC	✓	✓	✓	✓	✓	✓	✓
	24 ~ 110 V DC	-	-	-	-	-	-	-
	100 ~ 240 V AC	-	-	-	-	-	-	-
	Relay Output	✓	✓	✓	✓	✓	✓	✓
Mechanism	DIN-rail Mount	✓	✓	✓	✓	✓	✓	✓
	Wall Mount	✓	✓	✓	✓	✓	✓	✓
	Rack Mount	-	-	-	-	-	-	-
	IP Level	IP30	IP30	IP30	IP30	IP30	IP30	IP30
Protection	ESD (Ethernet)	✓	✓	✓	✓	✓	✓	✓
	Surge (EFT for power)	✓	✓	✓	✓	✓	✓	✓
	Power Reverse	✓	✓	✓	✓	✓	✓	✓
Operating Temperature	-10 ~ 60°C (14 ~ 140°F)	-	-	-	-	-	-	-
	-40 ~ 75°C (-40 ~ 167°F)	✓	✓	✓	✓	✓	✓	✓
	-40 ~ 85°C (-40 ~ 185°F)	-	-	-	-	-	-	-
Certifications	CE	✓	✓	✓	✓	✓	✓	✓
	FCC	✓	✓	✓	✓	✓	✓	✓
	UL/cUL 60950-1	-	-	-	-	-	-	-
	Class 1, Division 2	✓	✓	✓	✓	✓	✓	✓
	UL 508	✓	✓	✓	✓	✓	✓	✓
	Others	-	-	-	-	-	-	-

✓ : supported, - : not supported, Δ : optional

Unmanaged Ethernet Switches



Model Name		EKI-5524SSI/MMI Series	EKI-5525SI/MI Series	EKI-5528I EKI-5525I	EKI-5626CI	EKI-5629CI	EKI-5725I EKI-5728I	EKI-5726I
Description		4-port + 2x100FX port (Single/Multimode, SC/ST type), Fast Ethernet Switch	4-port + 1x100FX port (Single/Multi-mode, SC/ST type), Fast Ethernet Switch	8/5-port Fast Ethernet Switch	16FE + 2GE Combo Ethernet Switch	8FE + 2GE Combo Ethernet Switch	5/8-port Gigabit Ethernet Switch	16-port Gigabit Ethernet Switch
Interface	Number of Ports	6	4	8/5	18	10	5/8	16
	10/100Base-T (X)	4	4	8/5	16	8	-	-
	100BaseFX	2	1	-	-	-	-	-
	10/100/1000Base-T (X)	-	-	-	2 (combo)	2 (combo)	5/8	16
	1000Base-SX/LX/LHX/XD/ZX/EZX	-	-	-	2 (combo)	2 (combo)	-	-
	PoE (10/100 Mbps)	-	-	-	-	-	-	-
	PoE (10/100/1000 Mbps)	-	-	-	-	-	-	-
	DJ/DO	-	-	-	-	-	-	-
Network Management	Console	-	-	-	-	-	-	-
	Redundancy	-	-	-	-	-	-	-
	Diagnostics	-	-	-	-	-	-	-
	VLAN	-	-	-	-	-	-	-
	Configuration	-	-	-	-	-	-	✓
	SNMP	-	-	-	-	-	✓	✓
	Security	-	-	-	-	-	-	-
	Traffic Control	-	-	-	-	-	-	-
Power	12 ~ 48 V DC	✓	✓	✓	✓	✓	✓	✓
	24 ~ 110 V DC	-	-	-	-	-	-	-
	100 ~ 240 V AC	-	-	-	-	-	-	-
	Relay Output	✓	✓	✓	✓	✓	✓	✓
Mechanism	DIN-rail Mount	✓	✓	✓	✓	✓	✓	✓
	Wall Mount	✓	✓	✓	✓	✓	✓	✓
	Rack Mount	-	-	-	-	-	-	-
	IP Level	IP30	IP30	IP30	IP30	IP30	IP30	IP30
Protection	ESD (Ethernet)	✓	✓	✓	✓	✓	✓	✓
	Surge (EFT for power)	✓	✓	✓	✓	✓	✓	✓
	Power Reverse	✓	✓	✓	✓	✓	✓	✓
Operating Temperature	-10 ~ 60°C (14 ~ 140°F)	-	-	-	-	-	-	-
	-40 ~ 75°C (-40 ~ 167°F)	✓	✓	✓	✓	✓	✓	✓
	-40 ~ 85°C (-40 ~ 185°F)	-	-	-	-	-	-	-
Certifications	CE	✓	✓	✓	✓	✓	✓	✓
	FCC	✓	✓	✓	✓	✓	✓	✓
	UL/cUL 60950-1	-	-	-	-	-	-	-
	Class 1, Division 2	✓	✓	✓	✓	✓	✓	✓
	UL 508	✓	✓	✓	✓	✓	✓	✓
	Others	-	-	-	-	-	-	-

Industrial Ethernet Solutions

Unmanaged Ethernet Switches



Model Name		EKI-5726FI	EKI-5729FI	EKI-2428G-4CA	EKI-2525MI/SI-ST	EKI-2525MI/SI
Description		16-port+2 SFP Gigabit Ethernet Switch	8-Port+2 SFP Gigabit Ethernet Switch	24GFE+4SFP Giga ports Unmanaged Switch w/ AC Input	4+1 100FX Port Multi-mode/ Single-mode ST connector type Unmanaged Industrial Ethernet Switch	4+1 100FX Port Multi-mode/ Single-mode Unmanaged Industrial Ethernet Switch
Interface	Number of Ports	16	8	28	5	5
	10/100Base-T (X)	-	-	-	4	4
	100BaseFX	✓	✓	-	1	1
	10/100/1000Base-T (X)	16	8	24 + 4 (combo)	-	-
	1000Base-SX/LX/LHX/ XD/ZX/EZX	✓	✓	4 (combo)	-	-
	PoE (10/100 Mbps)	-	-	-	-	-
	PoE (10/100/1000 Mbps)	-	-	-	-	-
	DI/DO	-	-	-	-	-
Network Management	Console	✓	✓	-	-	-
	Redundancy	-	-	-	-	-
	Diagnostics	-	-	-	-	-
	VLAN	-	-	-	-	-
	Configuration	✓	✓	-	-	-
	SNMP	✓	✓	-	-	-
	Security	-	-	-	-	-
	Traffic Control	-	-	-	-	-
Power	12 ~ 48 V DC	✓	✓	-	✓	✓
	24 ~ 110 V DC	-	-	-	-	-
	100 ~ 240 V AC	-	-	✓	-	-
	Relay Output	✓	✓	-	✓	✓
Mechanism	DIN-rail Mount	✓	✓	-	✓	✓
	Wall Mount	✓	✓	-	✓	✓
	Rack Mount	-	-	✓	-	-
	IP Level	IP30	IP30	-	IP30	IP30
Protection	ESD (Ethernet)	✓	✓	✓	✓	✓
	Surge (EFT for power)	✓	✓	✓	✓	✓
	Power Reverse	✓	✓	-	✓	✓
Operating Temperature	-10 ~ 60°C (14 ~ 140°F)	-	-	-10 ~ 55°C (14 ~ 131°F)	✓	✓
	-40 ~ 75°C (-40 ~ 167°F)	✓	✓	-	-	-
	-40 ~ 85°C (-40 ~ 185°F)	-	-	-	-	-
Certifications	CE	✓	✓	✓	✓	✓
	FCC	✓	✓	✓	✓	✓
	UL/cUL 60950-1	-	-	-	✓	✓
	Class 1, Division 2	✓	✓	-	-	-
	UL 508	✓	✓	-	-	-
	Others	-	-	LVD 62368-1	-	-

Unmanaged Ethernet Switches



Model Name		EKI-2525LI-AE	EKI-2526M/S	EKI-2725/I	EKI-2728/I	EKI-2728S/2728SI	EKI-2728M/MI
Description		5 x Fast Ethernet ports Slim Type Unmanaged Switch	4+2 100FX Port Multi-mode/ Single-mode Industrial Ethernet Switch	5-port Gigabit Unmanaged Industrial Ethernet Switch	8-port Gigabit Unmanaged Industrial Ethernet Switch	6GE+2G Single-Mode Fiber Port Unmanaged Ethernet Switch	6G+2G Multi-Mode Unmanaged Ethernet Switch
Interface	Number of Ports	5	6	5	8	8	8
	10/100Base-T (X)	5	4	-	-	-	-
	100BaseFX	-	2	-	-	-	-
	10/100/1000Base-T (X)	-	-	5	8	6	6
	1000Base-SX/LX/LHX/ XD/ZX/EZX	-	-	-	-	2 x SC Single Mode	2
	PoE (10/100 Mbps)	-	-	-	-	-	-
	PoE (10/100/1000 Mbps)	-	-	-	-	-	-
	DI/DO	-	-	-	-	-	-
Console	-	-	-	-	-	-	
Network Management	Redundancy	-	-	-	-	-	-
	Diagnostics	-	-	-	-	-	-
	VLAN	-	-	-	-	-	-
	Configuration	-	-	-	-	-	-
	SNMP	-	-	-	-	-	-
	Security	-	-	-	-	-	-
	Traffic Control	-	-	-	-	-	-
Power	12 ~ 48 V DC	✓	✓	✓	✓	✓	✓
	24 ~ 110 V DC	-	-	-	-	-	-
	100 ~ 240 V AC	-	-	-	-	-	-
	Relay Output	-	✓	✓	✓	✓	✓
Mechanism	DIN-rail Mount	✓	✓	✓	✓	✓	✓
	Wall Mount	✓	✓	✓	✓	✓	✓
	Rack Mount	-	-	-	-	-	-
	IP Level	40	IP30	IP30	IP30	IP30	IP30
Protection	ESD (Ethernet)	✓	✓	✓	✓	✓	✓
	Surge (EFT for power)	✓	✓	✓	✓	✓	✓
	Power Reverse	✓	✓	✓	✓	✓	✓
Operating Temperature	-10 ~ 60°C (14 ~ 140°F)	-	✓	EKI-2725	EKI-2728	EKI-2728S	EKI-2728M
	-40 ~ 75°C (-40 ~ 167°F)	✓	-	EKI-2725I	EKI-2728I	EKI-2728SI	EKI-2728MI
	-40 ~ 85°C (-40 ~ 185°F)	-	-	-	-	-	-
Certifications	CE	✓	✓	✓	✓	✓	✓
	FCC	✓	✓	✓	✓	✓	✓
	UL/cUL 60950-1	✓	✓	✓	✓	✓	-
	Class 1, Division 2	-	-	-	-	-	✓
	UL 508	-	-	-	-	-	✓
	Others	-	-	-	-	-	-

Industrial Ethernet Solutions

Power Over Ethernet (PoE) Switches



Model Name		EKI-7708E-4FP/I	EKI-7708G-4FP/I	EKI-7708G-2FVPI	EKI-7710E-2CP EKI-7710E-2CPI	EKI-7710G-2CPI EKI-7710G-2CP	EKI-7712E-4FP EKI-7712E-4FPI	EKI-7712G-4FP EKI-7712G-4FPI	EKI-7712G-4FMPI	EKI-7712G-2FVPI	EKI-7720G-4FPI
Description		4FE+4SFP Managed Redundant Industrial PoE Switch	4GE+4SFP Managed Redundant Industrial PoE Switch	4GE+2VDSL+ 2SFP Managed Redundant Industrial PoE Switch	8FE+2SFP Managed Redundant Industrial PoE Switch	8GE+2SFP Managed Redundant Industrial PoE Switch	8FE + 4SFP Managed Redundant Industrial PoE Switch	8GE+4SFP Managed Redundant Industrial PoE Switch	8GE+4SFP Managed Redundant Industrial PoE Switch	8GE+2VDSL + 2SFP Managed Redundant Industrial PoE Switch	16GE+2SFP Managed Redundant Industrial PoE Switch
Interface	Number of Ports	8	8	8	10	10	12	12	12	12	20
	10/100Base-T (X)	-	-	4	-	-	-	-	-	-	-
	100BaseFX	-	-	-	-	-	-	-	-	-	-
	10/100/1000Base-T (X)	-	-	-	2 (combo)	2 (combo)	-	-	-	8	-
	1000Base-SX/LX/LHX/ XD/ZX/EZX	4	4	4 (2SFP+2VDSL)	2 (combo)	2 (combo)	4	4	4	4 (2SFP+2VDSL)	4
	PoE (10/100 Mbps)	4	-	-	8	-	8	-	-	-	-
	PoE (10/100/1000 Mbps)	-	4	-	-	8	-	8	8	-	16
DI/DO	-	-	-	-	-	-	-	-	-	-	
Console	✓	✓	✓	✓	✓	✓	✓	✓	✓	✓	
Network Management	Redundancy	✓	✓	✓	✓	✓	✓	✓	✓	✓	✓
	Diagnostics	✓	✓	✓	✓	✓	✓	✓	✓	✓	✓
	VLAN	✓	✓	✓	✓	✓	✓	✓	✓	✓	✓
	Configuration	✓	✓	✓	✓	✓	✓	✓	✓	✓	✓
	SNMP	✓	✓	✓	✓	✓	✓	✓	✓	✓	✓
	Security	✓	✓	✓	✓	✓	✓	✓	✓	✓	✓
	Traffic Control	✓	✓	✓	✓	✓	✓	✓	✓	✓	✓
Power	12 ~ 48 V DC	48 V _{DC}	48 V _{DC}	48 V _{DC}	✓	✓	48 V _{DC}	48 V _{DC}	53 ~ 57 V _{DC}	48 V _{DC}	55 V _{DC}
	24 ~ 110 V DC	-	-	-	-	-	-	-	-	-	-
	100 ~ 240 V AC	-	-	-	-	-	-	-	-	-	-
	Relay Output	✓	✓	✓	-	-	✓	✓	✓	✓	✓
	Power Budget	120W	120W	120W	120W	120W	240W	240W	370W	240W	420W
Mechanism	DIN-rail Mount	✓	✓	✓	✓	✓	✓	✓	✓	✓	✓
	Wall Mount	✓	✓	✓	✓	✓	✓	✓	✓	✓	✓
	Rack Mount	-	-	-	-	-	-	-	-	-	-
	IP Level	IP30	IP30	IP30	IP30	IP30	IP30	IP30	IP30	IP30	IP30
Protection	ESD (Ethernet)	✓	✓	✓	✓	✓	✓	✓	✓	✓	✓
	Surge (EFT for power)	✓	✓	✓	✓	✓	✓	✓	✓	✓	✓
	Power Reverse	✓	✓	✓	✓	✓	✓	✓	✓	✓	✓
Operating Temperature	-10 ~ 60°C (14 ~ 140°F)	EKI-7708E-4FP	EKI-7708G-4FP	-	EKI-7710E-2CP	EKI-7710G-2CP	EKI-7712E-4FP	EKI-7712G-4FP	-	-	-
	-40 ~ 75°C (-40 ~ 167°F)	EKI-7708E-4FPI	EKI-7708G-4FPI	✓	EKI-7710E-2CPI	EKI-7710G-2CPI	EKI-7712E-4FPI	EKI-7712G-4FPI	✓	✓	✓
	-40 ~ 85°C (-40 ~ 185°F)	-	-	-	-	-	-	-	-	-	-
Certifications	CE	✓	✓	✓	✓	✓	✓	✓	✓	✓	✓
	FCC	✓	✓	✓	✓	✓	✓	✓	✓	✓	✓
	UL/cUL 60950-1	-	-	-	-	-	-	-	-	-	-
	Class 1, Division 2	-	-	-	-	-	-	-	-	-	-
	UL 508	-	-	-	✓	✓	✓	✓	✓	-	-
Others	NEMA TS2 EN 50121-4 LVD 62368-1 UL 61010	NEMA TS2 EN 50121-4 LVD 62368-1 UL 61010	NEMA TS2 EN 50121-4 LVD 62368-1 UL 61010	NEMA TS2 EN 50121-4 LVD 62368-1	NEMA TS2 EN 50121-4 LVD 62368-1	NEMA TS2 EN 50121-4 LVD 62368-1	NEMA TS2 EN 50121-4 LVD 62368-1	NEMA TS2 EN 50121-4 LVD 62368-1	UL 62368-1 NEMA TS2 EN50121-4	UL 61010	UL 62368-1 NEMA TS2 EN50121-4

✓ : supported, - : not supported, △ : optional

Power Over Ethernet (PoE) Switches



Model Name		EKI-2525P	EKI-2525PA	EKI-2526PI	EKI-2528PAI	EKI-2726FHPI	EKI-5624P/ 5624PI	EKI-5729P/ 5729PI
Description		5-port Industrial PoE Switch	5-port Industrial PoE Switch with 24/48 V DC Power Input	6-port Industrial PoE Switch with Wide Temperature	8-port Industrial PoE Switch with 24/48V _{DC} Power Input and Wide Temperature	4G+2 SFP W/ 4 IEEE 802.3 High Power PoE Industrial Wide Temperature Switch	4FE PoE+2G Unmanaged Ethernet Switch, IEEE802.3af/at, E-Mark, 12V~24V _{DC}	8GE PoE+2G Unmanaged Ethernet Switch, IEEE802.3af/at, E-Mark, 12V~24V _{DC}
Interface	Number of Ports	5	5	6	8	6	6	8
	10/100Base-T (X)	1	1	2	4	-	4	-
	100BaseFX	-	-	-	-	-	-	-
	10/100/1000Base-T (X)	-	-	-	-	4	2	-
	1000Base-SX/LX/LHX/ XD/ZX/EZX	-	-	-	-	2	-	-
	PoE (10/100 Mbps)	4	4	4	4	4 (PoE+, 30W)	-	-
	PoE (10/100/1000 Mbps)	-	-	-	-	-	-	8
Network Management	DI/DO	-	-	-	-	-	-	-
	Console	-	-	-	-	-	-	-
	Redundancy	-	-	-	-	-	-	-
	Diagnostics	-	-	-	-	-	-	-
	VLAN	-	-	-	-	-	-	-
	Configuration	-	-	-	-	-	-	-
	SNMP	-	-	-	-	-	-	-
Power	Security	-	-	-	-	-	-	-
	Traffic Control	-	-	-	-	-	-	-
	12 ~ 48 V DC	48 V _{DC}	24/48 V _{DC}	48 V _{DC}	24/48 V _{DC}	48 V _{DC}	12 ~ 24 V _{DC}	-
	24 ~ 110 V DC	-	-	-	-	-	-	-
	100 ~ 240 V AC	-	-	-	-	-	-	-
	Relay Output	✓	✓	✓	✓	✓	✓	✓
	Mechanism	DIN-rail Mount	✓	✓	✓	✓	✓	✓
Wall Mount		✓	✓	✓	✓	✓	✓	✓
Rack Mount		-	-	-	-	-	-	-
IP Level		IP30	IP30	IP30	IP30	IP30	IP30	IP30
Protection	ESD (Ethernet)	✓	✓	✓	✓	✓	✓	✓
	Surge (EFT for power)	✓	✓	✓	✓	✓	✓	✓
	Power Reverse	✓	✓	✓	✓	✓	✓	✓
Operating Temperature	-10 ~ 60°C (14 ~ 140°F)	✓	✓	-	-	-	✓	✓
	-40 ~ 75°C (-40 ~ 167°F)	-	-	✓	✓	✓	✓	✓
	-40 ~ 85°C (-40 ~ 185°F)	-	-	-	-	-	-	-
Certifications	CE	✓	✓	✓	✓	✓	✓	✓
	FCC	✓	✓	✓	✓	✓	✓	✓
	UL/cUL 60950-1	✓	-	✓	-	-	✓	✓
	Class 1, Division 2	-	-	-	-	-	-	-
	UL 508	-	✓	-	✓	✓	-	-
	Others	-	-	-	-	-	✓	✓

Industrial Wireless and Protocol Gateway Solutions

Wireless Access Points/Clients



EN50155 Wireless Devices



Model Name		EKI-6333AC-2G	EKI-6333AC-4GP	EKI-6333AC-M12
Description		Industrial IEEE 802.11 Ind. 802.11 a/b/g/n/ac Wi-Fi AP/Client	Industrial IEEE 802.11 a/b/g/n/ac Wi-Fi AP with PoE PSE	EN50155 IEEE 802.11 a/b/g/n/ac Wi-Fi AP/Client
Connectivity	10/100/1000Base-T, Fixed	2	-	Δ2 (M12 Connector)
	10/100Base-TX, Fixed	-	4	
	RS-232 only	-	-	-
	RS-232/422/485	-	1x RS-232/RS-485	-
	Serial connector type	-	Terminal Block Male	-
Operating Mode	Mobility/Roaming	-	-	-
	Multi-Hopping	-	-	-
	AP/CPE	✓	✓	✓
Enclosure & Mount kit	Enclosure	IP55	-	Metal shell with solid mounting kits
	DIN-rail	-	✓	-
	Wall	✓	-	✓
	VESA Mount	-	-	-
	Pole Mount	✓	-	-
Power	Power Input (VDC)	-	24 ~ 56 V _{DC}	24-48V _{DC} (LV model), 72/96/110V _{DC} (HV model)
	Power input (PoE)	Passive 24V	PoE 802.3at PSE	-
	Power connector	RJ45	Terminal block	M12 A-Code male (5-pin)
Environment	Operating Temp.	-20 ~ 70 °C (-4~158°F)	-30 ~ 70 °C	-40 ~ 75 °C (-40 ~ 166 °F)
	Operating Humidity	10 ~ 95%	10 ~ 95%	10 ~ 95%
	Input Reverse Protection	-	-	-
Software	Network Protocol	-	-	-
	Firewall	-	-	-
	Router	-	-	-
	Configuration Options	Web-base	Web-base	Web-base
	Authentication	Username/Password	Username/Password	Username/Password
	Standard Operation Mode	Access Point, Client, Repeater mode	Access Point/Bridge mode	Access Point/Bridge/Client mode
	IEEE Standard	a/b/g/n/ac	a/b/g/n/ac	a/b/g/n/ac
WLAN	Radio Number	2	2	2
	Security	WEP, WPA/WPA2-Perso-I, WPA/WPA2-Enterprise	-	Open System, Shared Key, Lagacy 8021X, WPA/WPA2, WPA-PSK (TKIP), WPA2-PSK(AES)
RF	Frequency	2.4G/5GHz	2.4G/5GHz	2.4G/5GHz
	MIMO	2T2R	2T2R	2T2R
	UL60950-1	-	-	-
Certification	EN60950-1	-	-	-
	CE	✓	✓	✓
	FCC	✓	-	✓
	EN50155	-	-	✓

Model Name		EKI-9502G
Description		EN50155 Train-To-Ground Wi-Fi/Cellular Router
Connectivity	10/100Base-TX, Fixed	-
	10/100/1000 Based-T, Fixed	2
	RS-232 only	-
	RS-232/422/485	2
Serial connector type	Terminal Block Male	
Operating Mode	Mobility/Roaming	-
	Multi-Hopping	-
	AP/CPE	✓
Enclosure & Mount kit	Enclosure	Metal shell with solid mounting kits
	DIN-rail	-
	Wall	✓
	VESA Mount	-
	Pole Mount	-
Power	Power Input (VDC)	24-110 V _{DC}
	Power input (PoE)	-
	Power connector	M12 A-coded with (4-pin)
Environment	Operating Temp.	-40 ~ 70°C (-40 ~ 158°F)
	Operating Humidity	10 ~ 95%
	Input Reverse Protection	-
Software	Network Protocol	IPv4, TCP/IP, UDP, ARP
	Firewall	✓
	Router	NAT/PAT, Firewall, QoS, Static Route, Port Forwarding, DMZ, IPsec/PPTP/L2TP passthrough, OpenVPN Server/Client, GRE
	Protocol	DHCP Server, DHCP Client, DNS Proxy
	Management	HTTP, Telnet, SSH, System Log, E-mail, SMS, SNMP
	Configuration Options	Web-base
	Authentication	Authentication (X.509 certificate, Pre-shared key, PW)
	Standard Operation Mode	Access Point/Client mode
	IEEE Standard	802.11 a/b/g/n/ac
	Radio Number	up to 2 (module type design)
Security	Open System, Shared Key, Lagacy 802.1X	
RF	Frequency	2.4G/5G
	MIMO	3T3R
	LTE	Cat 4/6/12 (base on LTE module type)
WAN	Radio Number	Up to 4 (Module type design)
	SIM Card Slot	8
	UL60950-1	-
	EN60950-1	-
Certification	CE	✓
	FCC	✓
	EN50155	✓

* Note: Transmit Output Power & Receive Sensitivity are specified on data sheet.
 ✓ : supported, - : not supported, Δ : optional

Fieldbus Gateways



Model Name		EKI-1242IEIMS	EKI-1242IPNMS	EKI-1242IECMS	EKI-1242IBNMS	EKI-1242INR	EKI-1242IOUMS
Description		Modbus RTU/TCP to EtherNet/IP Fieldbus gateway	ModbusRTU/TCP to PROFINET Fieldbus gateway	ModbusRTU/TCP to EtherCAT Fieldbus gateway	ModbusRTU/TCP to BACnet Fieldbus gateway	Node-RED Fieldbus Gateway	Modbus TCP/RTU to OPC UA Fieldbus Gateway
Connectivity	10/100Base-TX, Fixed	4	4	4	4	4	4
	10/100/1000Based-T, Fixed	-	-	-	-	-	-
	RS-232 only	-	-	-	-	-	-
	RS-232/422/485	2	2	2	2	2	2
	Serial Connector Type	DB9 male	DB9 male	DB9 male	DB9 male	DB9 male	DB9 male
Operating Mode	Mobility/Roaming	-	-	-	-	-	-
	Multi-Hopping	-	-	-	-	-	-
	AP/CPE	-	-	-	-	-	-
Enclosure & Mount kft	Enclosure	IP30	IP30	IP30	IP30	IP30	IP30
	DIN-rail	✓	✓	✓	✓	✓	✓
	Wall	✓	✓	✓	✓	✓	✓
	VESA Mount	-	-	-	-	-	-
	Pole Mount	-	-	-	-	-	-
Power	Power Input (V _{DC})	(12~48V)	(12~48V)	(12~48V)	(12~48V)	12~48V	12~48V
	Power input (PoE)	-	-	-	-	--	--
	Power connector	Terminal block	Terminal block	Terminal block	Terminal block	Terminal block	Terminal block
	Power Consumption (12/24/48VDC) Watts	5.2W	5.2W	5.2W	5.2W	5.2W	5.2W
Environment	Operating Temp.	-10~60°C	-10~60°C	-10~60°C	-10~60°C	-10~60°C	-10~60°C
	Operating Humidity	10~95%	10~95%	10~95%	10~95%	10~95%	10~95%
	Input Reverse Protection	✓	✓	✓	✓	✓	✓
Software	Network Protocol	Modbus RTU/TCP EtherNet/IP	Modbus RTU/TCP PROFINET	Modbus RTU/TCP EtherCAT	Modbus RTU/TCP BACnet	Node-RED	Modbus RTU/TCP, OPC UA
	Firewall	-	-	-	-	-	-
	Router	-	-	-	-	-	-
	Configuration Options	Web-based	Web-based	Web-based	Web-based	Web-base	Web-base
	Authentication	Username/Password	Username/Password	Username/Password	Username/Password	Username/ password	Username/ password
	Standard Operation mode	ModbusRTU/TCP Master Ethernet/IP Adapter	ModbusRTU/TCP Master PROFINET Slave	ModbusRTU/TCP Master EtherCAT Slave	ModbusRTU/TCP Master BACNet Slave	-	-
WLAN	IEEE Standard	-	-	-	-	-	-
	Radio Number	-	-	-	-	-	-
	Security	-	-	-	-	-	-
RF	MIMO	-	-	-	-	-	-
	Maximum Transmit Output Power	-	-	-	-	-	-
	Receive Sensitivity	-	-	-	-	-	-
	Antenna Connector	-	-	-	-	-	-
Cellular	Standard	-	-	-	-	-	-
	Five-band Options UMTS	-	-	-	-	-	-
	Quad-band Options EDGE/GSM	-	-	-	-	-	-
	Certification (GCF, PTCRB)	-	-	-	-	-	-
	UL60950-1	✓	✓	✓	✓	✓	✓
Certification	EN60950-1	-	-	-	-	-	-
	CE (EN55022 class A, EN55024)	✓	✓	✓	✓	✓	✓
	FCC (part 15 subpart B class A)	✓	✓	✓	✓	✓	✓
	Hazardous Location (Class I, Division 2)	-	-	-	-	-	-
	Radio (EN 301 489-1/-4, EN 301 511)	-	-	-	-	-	-
	Radio (FCC part 22H, part 24E)	-	-	-	-	-	-
	EN 50155	-	-	-	-	-	-

✓ : supported, - : not supported, △ : optional

Industrial Wireless and Protocol Gateway Solutions

Modbus Gateways

Modbus Routers



Model Name	EKI-1221/I/CI	EKI-1222/I/CI	EKI-1224/I/CI	EKI-1221R	EKI-1222R	EKI-1224R	
Description	1-Port Modbus Gateway	2-Port Modbus Gateway	4-Port Modbus Gateway	1-Port Modbus Router	2-Port Modbus Router	4-Port Modbus Router	
Connectivity	10/100Base-TX, Fixed	2	2	2	2	2	
	10/100/1000Based-T, Fixed	-	-	-	-	-	
	RS-232 only	-	-	-	-	-	
	RS-232/422/485	1 (CI version: RS-422/485)	2 (CI version: RS-422/485)	4 (CI version: RS-422/485)	1 (CI version: RS-422/485)	2 (CI version: RS-422/485)	4 (CI version: RS-422/485)
	Serial Connector Type	DB9 Male	DB9 Male	DB9 Male	DB9 Male	DB9 Male	DB9 Male
Operating Mode	Mobility/Roaming	-	-	-	-	-	
	Multi-Hopping	-	-	-	-	-	
	AP/CPE	-	-	-	-	-	
Enclosure & Mount kit	Enclosure	IP30	IP30	IP30	IP30	IP30	
	DIN-rail	✓	✓	✓	✓	✓	
	Wall	✓	✓	✓	✓	✓	
	VESA Mount	-	-	-	-	-	
	Pole Mount	-	-	-	-	-	
Power	Power Input (V _{DC})	2* (12~48V)	2* (12~48V)	2* (12~48V)	2* (12~48V)	2* (12~48V)	
	Power Input (PoE)	-	-	-	-	-	
	Power Connector	Terminal block	Terminal block	Terminal block	Terminal block	Terminal block	
	Power Consumption (12/24/48V _{DC}) Watts	5.2W	5.2W	6.3W	5.2W	5.2W	6.3W
Environment	Operating Temp.	-10 ~ 60°C 'CI & I' models: -40 ~ 70°C	-10 ~ 60°C 'CI & I' models: -40 ~ 70°C	-10 ~ 60°C 'CI & I' models: -40 ~ 70°C	-10 ~ 60°C 'CI & I' models: -40 ~ 70°C	-10 ~ 60°C 'CI & I' models: -40 ~ 70°C	-10 ~ 60°C 'CI & I' models: -40 ~ 70°C
	Operating Humidity	5 ~ 95%	5 ~ 95%	5 ~ 95%	5 ~ 95%	5 ~ 95%	5 ~ 95%
	Input Reverse Protection	-	-	-	-	-	-
Software	Network Protocol	Modbus RTU, Modbus TCP, Modbus ASCII	Modbus RTU, Modbus TCP, Modbus ASCII	Modbus RTU, Modbus TCP, Modbus ASCII	Modbus RTU, Modbus TCP, Modbus ASCII	Modbus RTU, Modbus TCP, Modbus ASCII	
	Firewall	-	-	-	-	-	
	Router	-	-	-	-	-	
	Configuration Options	Windows Utility, Web Browser	Windows Utility, Web Browser	Windows Utility, Web Browser	Windows Utility, Web Browser	Windows Utility, Web Browser	Windows Utility, Web Browser
	Authentication	-	-	-	-	-	
WLAN	Standard Operating Mode	Modbus RTU Master/ Slave mode Modbus ASCII Master/ Slave mode	Modbus RTU Master/ Slave mode Modbus ASCII Master/ Slave mode	Modbus RTU Master/ Slave mode Modbus ASCII Master/ Slave mode	Modbus RTU Master/ Slave mode Modbus ASCII Master/ Slave mode	Modbus RTU Master/ Slave mode Modbus ASCII Master/ Slave mode	
	IEEE Standard	-	-	-	-	-	
	Radio Number	-	-	-	-	-	
RF	Security	-	-	-	-	-	
	MIMO	-	-	-	-	-	
	Maximum Transmit Output Power	-	-	-	-	-	
	Receive Sensitivity	-	-	-	-	-	
Cellular	Antenna Connector	-	-	-	-	-	
	Standard	-	-	-	-	-	
	Five-band Options UMTS	-	-	-	-	-	
	Quad-band Options EDGE/GSM	-	-	-	-	-	
	Certification (GCF, PTCRB)	-	-	-	-	-	
Certification	UL60950-1	✓	✓	✓	✓	✓	
	EN60950-1	-	-	-	-	-	
	CE (EN55022 class A, EN55024)	✓	✓	✓	✓	✓	
	FCC (part 15 subpart B class A)	✓	✓	✓	✓	✓	
	Hazardous Location (Class I, Division 2)	✓	✓	✓	✓	✓	
	Radio (EN 301 489-1/-4, EN 301 511)	-	-	-	-	-	
	Radio (FCC part 22H, part 24E) EN 50155	-	-	-	-	-	

✓ : supported, - : not supported, △ : optional

Serial Device Servers



Model Name		EKI-1511L	EKI-1511L	EKI-1511X
Description		1 Port RS-232 Serial Device Server	1 Port RS-232 Serial Device Server	1 Port RS-422-485 Serial Device Server
Connectivity	10/100Base-TX, Fixed	1	1	1
	10/100/1000Based-T, Fixed	-	-	-
	RS-232 only	✓	✓	✓
	RS-232/422/485	-	-	-
	Serial Connector Type	DB9 Male	DB9 Male	DB9 Male
Enclosure & Mount kit	Enclosure	IP30	IP30	IP30
	DIN-rail	✓	✓	✓
	Wall	✓	✓	✓
	VESA Mount	-	-	-
	Pole Mount	-	-	-
Power	Power Input (V _{dc})	9~36V	9~36V	9~36V
	Power Input (PoE)	--	--	--
	Power Connector	Terminal block	Terminal block	Terminal block
	Power Consumption (12/24/48V _{dc}) Watts	1W	1W	1W
Environment	Operating Temp.	-10 ~ 60°C	-40 ~75°C	-10 ~ 60°C
	Operating Humidity	10~95%	10~95%	10~95%
	Input Reverse Protection	-	-	-
Software	Network Protocol	ARP, ICMP, IPv4, TCP, UDP, BOOTP, DHCP Client, Auto IP, Telnet, SNMP, HTTP, DNS, SMTP	ARP, ICMP, IPv4, TCP, UDP, BOOTP, DHCP Client, Auto IP, Telnet, SNMP, HTTP, DNS, SMTP	ARP, ICMP, IPv4, TCP, UDP, BOOTP, DHCP Client, Auto IP, Telnet, SNMP, HTTP, DNS, SMTP
	Firewall	-	-	-
	Router	-	-	-
	Configuration Options	Windows utility, Telnet console, Web Browser	Windows utility, Telnet console, Web Browser	Windows utility, Telnet console, Web Browser
	Authentication	--	--	--
	Standard Operating Mode	COM Port redirection (Virtual COM) TCP/UDP Server (Polling) Mode TCP/UDP Client (event handling) Mode Pair Connection (P2P) Mode	COM Port redirection (Virtual COM) TCP/UDP Server (Polling) Mode TCP/UDP Client (event handling) Mode Pair Connection (P2P) Mode	COM Port redirection (Virtual COM) TCP/UDP Server (Polling) Mode TCP/UDP Client (event handling) Mode Pair Connection (P2P) Mode
Certification	UL60950-1	-	-	-
	EN60950-1	-	-	-
	CE(EN55022 class A, EN55024)	✓	✓	✓
	FCC (part 15 subpart B class A)	✓	✓	✓
	Hazardous Location (Class I, Division 2)	-	-	-
	Radio (EN 301 489-1/-4, EN 301 511)	-	-	-
	Radio (FCC part 22H, part 24E) EN 50155	-	-	-

Serial Device Servers



Model Name		EKI-1521/CI/I EKI-1522/CI/I EKI-1524/CI/I	EKI-1528I-DR EKI-1528CI-DR	EKI-1528/IT EKI-1526/IT	ADAM-4571/L ADAM-4570/L
Description		1/2/4-port RS-232/422/485 Serial Device Server	8-port RS-232/422/485 Device Server 8-port RS-422/485 Device Server	8/16-port RS-232/422/485 Serial Device Server	1/2-port RS-232/422/485 Serial Device Server
Connectivity	10/100Base-TX, Fixed	2	2	-	1
	10/100/1000Base-T, Fixed	-	-	2	-
	RS-232 only	-	-	-	ADAM-4571L/4570L: 1/2
	RS-232/422/485	1/2/4 (EKI-1524: RS-422/485)	8	8/16	ADAM-4571/4570: 1/2
Serial Connector Type		DB9 Male	DB9 Male	DB9 male	ADAM-4571/L: DB9 Male ADAM-4570/L: 10-pin RJ48
Enclosure & Mount kit	Enclosure	IP30	IP30	SECC chassis	ABS+PC with solid mounting hardware
	DIN-rail	✓	✓	Rackmount	✓
	Wall	✓	✓	-	✓
	VESA Mount	-	-	-	-
	Pole Mount	-	-	-	-
Power	Power Input (V _{ac})	2* (12~48V)	2* (12~48V)	EKI-1528(I)/ EKI-1526(I): 100 ~ 240 V _{ac} , 50 ~ 60 Hz EKI-1528T(I)/ EKI-1526T(I): 12 ~ 48 V _{ac} , Terminal Block	(10~30V)
	Power Input (PoE)	-	-	-	-
	Power Connector	Terminal block	Terminal block	6-pin removable screw terminal	Terminal block
	Power Consumption (12/24/48V _{ac}) Watts	5.2 W (EKI-1521/EKI-1522) 6.3 W (EKI-1524)	5 W (EKI-1528I) 6 W (EKI-1528CI)	5.6 W	2.5 W
Environment	Operating Temp.	EKI-1521/ EKI-1522/ EKI-1524: -10 ~ 60°C 'CI & I' models: -40 ~ 80°C	-40 ~ 70°C	-10 ~ 60°C (14 ~ 140°F) 'I' Model: -40 ~ 75°C (-40 ~ 167°F)	-10 ~ 60°C
	Operating Humidity	10 ~ 95%	10 ~ 95%	10 ~ 95%	5 ~ 95%
	Input Reverse Protection	-	-	-	-
Software	Network Protocol	ARP, ICMP, IPv4, TCP, UDP, BOOTP, DHCP Client, Auto IP, Telnet, SNMP, HTTP, DNS, SMTP, NTP	ARP, ICMP, IPv4, TCP, UDP, BOOTP, DHCP Client, Auto IP, Telnet, SNMP, HTTP, DNS, SMTP, NTP	ARP, ICMP, IPv4, TCP, UDP, BOOTP, DHCP Client, Auto IP, Telnet, SNMP, HTTP, DNS, SMTP, NTP	ARP, ICMP, IPv4, TCP, UDP, BOOTP, DHCP Client, Auto IP, Telnet, SNMP, HTTP, DNS, SMTP
	Firewall	-	-	-	-
	Router	-	-	-	-
	Configuration Options	Windows utility, Telnet console, Web Browser	Windows utility, Telnet console, Web Browser	Windows utility, Telnet console, Web Browser, serial console	Windows utility, Telnet console, Web Browser
	Authentication	-	-	-	-
Standard Operating Mode	COM Port redirection (Virtual COM) TCP/UDP Server (Polling) Mode TCP/UDP Client (event handling) Mode Pair Connection (P2P) Mode RFC-2217 Mode	COM Port redirection (Virtual COM) TCP/UDP Server (Polling) Mode TCP/UDP Client (event handling) Mode Pair Connection (P2P) Mode RFC-2217 Mode	COM Port redirection (Virtual COM) TCP/UDP Server (Polling) Mode TCP/UDP Client (event handling) Mode Pair Connection (P2P) Mode RFC-2217 Mode	COM Port redirection (Virtual COM) TCP/UDP Server (Polling) Mode TCP/UDP Client (event handling) Mode Pair Connection (P2P) Mode	
Certification	UL60950-1	✓	✓	-	-
	EN60950-1	-	-	-	-
	CE(EN55022 class A, EN55024)	✓	✓	✓	✓
	FCC (part 15 subpart B class A)	✓	✓	✓	✓
	Hazardous Location (Class I, Division 2)	✓	-	-	-
	Radio (EN 301 489-1/-4, EN 301 511)	-	-	-	-
Radio (FCC part 22H, part 24E)	-	-	-	-	
EN 50155	-	-	-	-	

Console Servers



Model Name		EKI-1528NL-CS EKI-1526NL-CS
Description		8/16-Port RS-232/422/485 Console Server
Connectivity	10/100Base-TX, Fixed	-
	10/100/1000Based-T, Fixed	2
	RS-232 only	-
	RS-232/422/485	8/16
Serial Connector Type		RJ-45 (Cisco compliant)
Enclosure & Mount kit	Enclosure	SECC chassis
	DIN-rail	Rackmount
	Wall	-
	VESA Mount	-
Power	Power Input (V _{cc})	EKI-1528(I)/ EKI-1526(I): 100 ~ 240 V _{AC} , 50 ~ 60 Hz EKI-1528T(I)/ EKI-1526T(I): 12 ~ 48 V _{DC} , Terminal Block
	Power Input (PoE)	-
	Power Connector	6-pin removable screw terminal
	Power Consumption (12/24/48V _{DC}) Watts	5.6 W
Environment	Operating Temp.	-10 ~ 60°C (14 ~ 140°F) "I" Model: -40 ~ 75°C (-40 ~ 167°F)
	Operating Humidity	10 ~ 95%
	Input Reverse Protection	-
Software	Network Protocol	ARP, ICMP, IPv4, UDP, BOOTP, DHCP Client, Auto IP, Telnet, SNMP, HTTP, DNS, SMTP, NTP
	Firewall	-
	Router	-
	Configuration Options	Windows utility, Telnet console, Web Browser, serial console
	Authentication	-
	Standard Operating Mode	COM Port redirection (Virtual COM) TCP/UDP Server (Polling) Mode TCP/UDP Client (event handling) Mode Pair Connection (P2P) Mode RFC-2217 Mode
Certification	UL60950-1	-
	EN60950-1	-
	CE(EN55022 class A, EN55024)	✓
	FCC (part 15 subpart B class A)	✓
	Hazardous Location (Class I, Division 2)	-
	Radio (EN 301 489-1/-4, EN 301 511)	-
Radio (FCC part 22H, part 24E)	-	
EN 50155	-	

Wireless Devices



Model Name		EKI-1361 EKI-1362	EKI-6333AC
Description		1/2-port RS-232/422/485 to 802.11b/g/n WLAN Serial Device Server	IEEE 802.11 a/b/g/n/ac Wi-Fi AP
Connectivity	10/100Base-TX, Fixed	✓	-
	10/100/1000Based-T, Fixed	-	✓
	RS-232 only	-	-
	RS-232/422/485	✓	-
Serial connector type		DB9 Male	-
Operating Mode	Mobility/Roaming	✓	-
	Multi-Hopping	-	-
	AP/CPE	✓	✓
Enclosure & Mount kit	Enclosure	IP30	IP30
	DIN-rail	✓	✓
	Wall	✓	✓
	VESA Mount	-	-
Power	Pole Mount	-	-
	Power Input (V _{cc})	12~48V	12~48V
	Power input (PoE)	-	-
	Power connector	Terminal block	Terminal block
Power Consumption (12/24/48VDC) Watts		8W (EKI-1361) 9W (EKI-1362)	8W
Environment	Operating Temp.	-40 ~ 75°C	-40 ~ 75°C
	Operating Humidity	10 ~ 95%	10 ~ 95%
	Input Reverse Protection	✓	✓
Software	Network Protocol	-	-
	Firewall	-	-
	Router	-	-
	Configuration Options	Web-base, windows utility	Web-base
	Authentication	Username/Password	Username/Password
	Standard Operation Mode	VCOM, USDG mode (TCP/UDP server, TCP/UDP client), Station Mode	Access Point
WLAN	IEEE Standard	a/b/g/n	a/b/g/n/ac
	Radio Number	1	1
	Security	WEP, WPA/WPA2-Personal, WPA/WPA2-Enterprise	WEP, WAP/WAP2-Persona, WAP/WAP2-Enterprise
RF	MIMO	2T2R	2T2R
	Maximum Transmit Output Power	19dBm (11n)	19dBm (11n)
	Receive Sensitivity	-93dBm (11g Rx0+Rx1)	-93dBm (11g Rx0+Rx1)
Cellular	Antenna Connector	R-SMA	R-SMA
	Standard	-	-
	Five-band option in UMTS	-	-
Certification	Quad-band optin in EDGE/GSM	-	-
	Certification (GCF, PTCRB)	-	-
	UL60950-1	✓	✓
	EN60950-1	✓	✓
	CE (EN55022 class A, EN55024)	✓	✓
	FCC (part 15 subpart B class A)	✓	✓
Hazardous Location (Class I, Division 2)	-	-	
Radio (EN 301 489-1/-4, EN 301 511)	-	-	
Radio (FCC part 22H, part 24E)	-	-	
EN 50155	-	-	

Wireless Sensing Network



Model Name		BB-WSW	WISE-6610-XX00	WISE-6610-XX00C
Description		Industrial LoRaWAN Node	LoRaWAN Gateway support up to 100/500 nodes with 868/915/923MHz	LoRaWAN Gateway support up to 100/500 nodes with 868/915/923MHz
Specifications	Mobile Wireless	LoRaWAN	LoRaWAN	LoRaWAN/LTE
	Communication Interface	BB-WSW2C00015: Modbus RS-485 BB-WSW2C42100: AI/DI/DO	LoRaWAN	LoRaWAN
	Temp	-40~75 °C	-40~75 °C	-40~75 °C
	Power Input	9~36 V _{cc}	9~36 V _{cc}	9~36 V _{cc}
	Dimensions (W x Hx D)	95 x 116 x 65 mm	150 x 37.5 x 83 mm	150 x 37.5 x 83 mm
	Weight	340g	500g	500g

✓ : supported, - : not supported, △ : optional

Industrial Cellular Routers and Gateways

Industrial Modulized Cellular Routers



		LR77 v2 Libratum	UR5i v2 Libratum	LR77 v2	UR5i v2	XR5i v2E	XR5i v2F	
Region	EMEA	✓	✓	✓	✓	✓	✓	
	NAM	-	-	-	-	-	ERT31x	
	ASIA & LATAM	-	✓	-	✓	✓	✓	
	AUS & NZ	-	✓	-	-	-	-	
Mobile Wireless Network Technology	GPRS/EDGE	✓	✓	✓	✓	-	-	
	UMTS/HSPA+	✓	✓	✓	✓	-	-	
	LTE	Cat.3	-	Cat.3	-	-	-	
	LTE 450	-	-	-	-	-	-	
	WAN Ethernet	✓	✓	optional	optional	✓	✓	
	Two VF modules	-	-	-	-	-	-	
	Ethernet 10/100	2x	2x	1x - 3x	1x - 3x	2x	1x - 3x	
Communication Interfaces and Expansions	PoE PSE / PoE PD	-	-	-	-	-	-	
	SD Card Holder	-	-	optional	optional	-	optional	
	Wi-Fi (IEEE 802.11 b, g, n)	optional	optional	optional	optional	optional	optional	
	USB Host	-	-	✓	✓	-	✓	
	RS232/RS422/RS485	-	-	optional	optional	-	optional	
	MBUS, Wireless MBUS	-	-	optional	optional	-	optional	
	I/O CNT (4x bin. IN, 2x analog IN, 1x output)	-	-	optional	optional	-	optional	
	I/O (1 x IN/1 x OUT)	-	-	✓	✓	-	✓	
	GPS Receiver	-	-	optional	optional	-	-	
	CPU Power (MHz)	333	333	333	333	333	333	
CPU, Ram, Consumption, Sim, Design, Environmental, Dimensions	Flash RAM / RAM / M-RAM (MB / MB / kB)	16 / 64 / 128	16 / 64 / 128	16 / 64 / 128	16 / 64 / 128	16 / 64 / 128	16 / 64 / 128	
	Consumption - Idle / Average / Peak / Sleep Mode	2,3 / 3,5 / 5,5W / -	2,3 / 3,5 / 5,5W / -	2,3 / 4 / 6W / -	2,3 / 4 / 6W / -	2,3 / 4 / 6W / -	2 / 2,5 / 3W / -	
	2 x SIM Card	✓	✓	optional	optional	-	-	
	Power Supply (V DC)	9 - 36	9 - 36	9 - 36	9 - 36	9 - 36	9 - 36	
	Op. Temperature (°C)	-40 to +75	-40 to +75	-40 to +75	-40 to +75	-40 to +75	-40 to +75	
	Plastic Casing (mm)	51x87x116	51x87x116	51x87x116	51x87x116	51x87x116	51x87x116	
	Metal Casing (mm)	42x87x113	42x87x113	42x87x113	42x87x113	42x87x113	42x87x113	
	DIN holder TS35/TS32	✓	✓	✓	✓	✓	✓	
	Linux	✓	✓	✓	✓	✓	✓	
	IPSec, OpenVPN, PPTP, L2TP, GRE, Easy VPN	✓	✓	✓	✓	✓	✓	
Functions	Authentication (X.509 certificate, Pre-shared key, PW)	✓	✓	✓	✓	✓	✓	
	Firewall, NAT/PAT	✓	✓	✓	✓	✓	✓	
	DHCP Server, Client, Relay	✓	✓	✓	✓	✓	✓	
	HTTP/HTTPS Server, Telnet/SSH, NTP Server, NTP Client	✓	✓	✓	✓	✓	✓	
	DynDNS	✓	✓	✓	✓	✓	✓	
	FTP Server	✓	✓	✓	✓	✓	✓	
	SNMP, VRRP, PPPoE Bridge	✓	✓	✓	✓	✓	✓	
	SMTP, E-mail, SMS Functions	✓	✓	✓	✓	✓	✓	
	VLAN 802.1Q	✓	✓	✓	✓	✓	✓	
	QoS, IGMP, BGP, OSPF, RIP	optional	optional	optional	optional	optional	optional	
	IPv6 Dual Stack	✓	✓	✓	✓	✓	✓	
	COM Port TCP/UDP server/client	-	-	✓	✓	-	✓	
	MODBUS RTU/TCP Gateway	-	-	optional	optional	-	optional	
	4 Configuration Profiles	✓	✓	✓	✓	✓	✓	
	Automatic Configuration and FW Update	✓	✓	✓	✓	✓	✓	
	Additional Software Support	Supports Software User Modules (free space for UM)	2 MB	2 MB	2 MB	2 MB	2 MB	2 MB
		WebAccess/DMP	✓	✓	✓	✓	✓	✓
R-SeeNet		✓	✓	✓	✓	✓	✓	
WebAccess/VPN		✓	✓	✓	✓	✓	✓	
Python, Node-RED								

Industrial Advanced Cellular Routers



		SmartFlex LAN	SmartFlex	SmartMotion	SmartStart
Region	EMEA	BB-SR300	BB-SR303, BB-SR304, BB-SR307	BB-ST352, BB-ST355	BB-SL305
	NAM	BB-SR300	BB-SR305	-	BB-SL302
	ASIA & LATAM	BB-SR300	BB-SR304	-	BB-SL306, BB-SL305
	AUS & NZ	BB-SR300	BB-SR308	-	-
Mobile Wireless Network Technology	GPRS/EDGE	-	✓	✓	✓
	UMTS/HSPA+	-	✓	✓	✓
	LTE	-	Cat.3/Cat.4	Cat.3	Cat.1/Cat.4
	LTE 450	-	SR307	ST355	-
Communication Interfaces and Expansions	WAN Ethernet	✓	✓	✓	-
	Two VF modules	-	-	✓	-
	Ethernet 10/100	5x	2x - 5x	2x	1x
	PoE PSE / PoE PD	optional	optional	optional	-
	SD Card Holder	✓	✓	✓	-
	Wi-Fi (IEEE 802.11 b, g, n)	optional	optional	optional	optional
	USB Host	✓	✓	✓	-
	RS232/RS422/RS485	-	optional	-	RS232
	MBUS, Wireless MBUS	-	-	-	-
	I/O CNT (4x bin. IN, 2x analog IN, 1x output)	-	-	-	-
	I/O (1 x IN/1 x OUT)	2xIN / 1xOUT	2xIN / 1xOUT	2xIN / 1xOUT	✓
	GPS Receiver	-	by module	✓	-
CPU, Ram, Consumption, Sim, Design, Environmental, Dimensions	CPU Power (MHz)	1000	1000	1000	1000
	Flash RAM / RAM / M-RAM (MB / MB / kB)	256 / 512 / 128	256 / 512 / 128	256 / 512 / 128	256 / 512 / 128
	Consumption - Idle / Average / Peak / Sleep Mode	2,5 / 4 / 11 W / 10mW	2,5 / 4 / 11 W / 10mW	2,5 / 4 / 11 W / 10mW	2,7 / 5.5 / 11 W / 40mW
	2 x SIM Card	-	✓	4x	a
	Power Supply (V DC)	10 - 60	10 - 60	10 - 60	9 - 36
	Op. Temperature (°C)	-40 to +75	-40 to +75 (-40 to +70 LTE450)	-40 to +75 (-40 to +70 LTE450)	-40 to +75
	Plastic Casing (mm)	55x97x125	55x97x125	55x97x125	30x87x127
	Metal Casing (mm)	55x97x125	55x97x125	55x97x125	-
	DIN holder TS35/TS32	✓	✓	✓	Wall / DIN
	Linux	✓	✓	✓	✓
Functions	IPSec, OpenVPN, PPTP, L2TP, GRE, Easy VPN	✓	✓	✓	✓
	Authentication (X.509 certificate, Pre-shared key, PW)	✓	✓	✓	✓
	Firewall, NAT/PAT	✓	✓	✓	✓
	DHCP Server, Client, Relay	✓	✓	✓	✓
	HTTP/HTTPS Server, Telnet/SSH, NTP Server, NTP Client	✓	✓	✓	✓
	DynDNS	✓	✓	✓	✓
	FTP Server	✓	✓	✓	✓
	SNMP, VRRP, PPPoE Bridge	✓	✓	✓	✓
	SMTP, E-mail, SMS Functions	✓	✓	✓	✓
	VLAN 802.1Q	✓	✓	✓	✓
	QoS, IGMP, BGP, OSPF, RIP	optional	optional	optional	optional
	IPv6 Dual Stack	✓	✓	✓	✓
	COM Port TCP/UDP server/client	-	✓	✓	✓
	MODBUS RTU/TCP Gateway	-	optional	optional	optional
	4 Configuration Profiles	✓	✓	✓	✓
Automatic Configuration and FW Update	✓	✓	✓	✓	
Additional Software Support	Supports Software User Modules (free space for UM)	128 MB	128 MB	128 MB	128 MB
	WebAccess/DMP	✓	✓	✓	✓
	R-SeeNet	✓	✓	✓	✓
	WebAccess/VPN	✓	✓	✓	✓
	Python, Node-RED	✓	✓	✓	✓

Industrial Cellular Routers and Gateways

Industrial IoT Cellular Routers



		ICR-3200w	ICR-3201	ICR-3831	ICR-2031	ICR-2431	
Region	EMEA	ICR-3231	ICR-3201	ICR-3831	✓	✓	
	NAM	ICR-3241, ICR-3211	ICR-3201	-	-	-	
	ASIA & LATAM	-	ICR-3201	-	-	-	
	AUS & NZ	ICR-3232	ICR-3201	-	-	-	
Mobile Wireless Network Technology	GPRS/EDGE	✓	-	✓	✓	✓	
	UMTS/HSPA+	✓	-	✓	✓	✓	
	LTE	Cat.4/Cat M1	-	Cat.4	✓	✓	
	LTE 450	-	-	-	-	-	
	WAN Ethernet	✓	✓	✓	✓	✓	
	Two VF modules	-	-	-	-	-	
	Ethernet 10/100	2x	2x	2x (M12 connector)	1	2	
Communication Interfaces and Expansions	PoE PSE / PoE PD	-	-	PoE PD	-	-	
	SD Card Holder	-	-	✓	-	-	
	Wi-Fi (IEEE 802.11 b, g, n)	optional	optional	-	-	-	
	USB Host	-	-	✓ (M12 connector)	-	-	
	RS232/RS422/RS485	RS232/RS485	RS232/RS485	RS232 (M12 connector)	-	RS232/485	
	MBUS, Wireless MBUS	-	-	-	-	-	
	I/O CNT (4x bin. IN, 2x analog IN, 1x output)	-	-	-	-	-	
	I/O (1 x IN/1 x OUT)	✓	✓	2xIN / 2xOUT (M12 connector)	✓	✓	
	GPS Receiver	optional	optional	✓	-	-	
	CPU Power (MHz)	1000	1000	1000	600	600	
CPU, Ram, Consumption, Sim, Design, Environmental, Dimensions	Flash RAM / RAM / M-RAM (MB / MB / kB)	2x 256 MB – FW 512 MB – User data storage 838 MB – Space for User Modules	2x 256 MB – FW 512 MB – User data storage 838 MB – Space for User Modules	256 / 512 / 128	Flash 64MB, 12MB for RouterAPP	Flash 64MB, 12MB for RouterAPP	
	Consumption - Idle / Average / Peak / Sleep Mode	2.5 / 4 W / 11 W / 10 mW	2.5 / 4 W / 11 W / 10 mW	2.5 / 4 / 11 W / 10mW	1/3.5/10 No sleep mode	1/3.5/10 No sleep mode	
	2 x SIM Card	a/ eSIM	-	✓	✓	✓	
	Power Supply (V DC)	9 - 36	9 - 36	12 - 48	9 - 48	9 - 48	
	Op. Temperature (°C)	-40 to +75	-40 to +75	-40 to +70	-40 to +75	-40 to +75	
	Plastic Casing (mm)	-	-	-	-	-	
	Metal Casing (mm)	55 x 97 x 125	55 x 97 x 125	59 x 113 x 203	103 x 95 x 23	103 x 95 x 23	
	DIN holder TS35/TS32	Wall / DIN	Wall / DIN	Wall	Wall/DIN	Wall/DIN	
	Functions	Linux	✓	✓	✓	✓	✓
		IPSec, OpenVPN, PPTP, L2TP, GRE, Easy VPN	✓	✓	✓	✓	✓
Authentication (X.509 certificate, Pre-shared key, PW)		✓	✓	✓	✓	✓	
Firewall, NAT/PAT		✓	✓	✓	✓	✓	
DHCP Server, Client, Relay		✓	✓	✓	✓	✓	
HTTP/HTTPS Server, Telnet/SSH, NTP Server, NTP Client		✓	✓	✓	✓	✓	
DynDNS		✓	✓	✓	✓	✓	
FTP Server		✓	✓	✓	✓	✓	
SNMP, VRRP, PPPoE Bridge		✓	✓	✓	✓	✓	
SMT, E-mail, SMS Functions		✓	✓	✓	✓	✓	
VLAN 802.1Q		✓	✓	✓	✓	✓	
QoS, IGMP, BGP, OSPF, RIP		optional	optional	optional	optional	optional	
IPv6 Dual Stack		✓	✓	✓	✓	✓	
COM Port TCP/UDP server/client		✓	✓	✓	✓	✓	
MODBUS RTU/TCP Gateway		optional	optional	optional	optional	optional	
4 Configuration Profiles		✓	✓	✓	✓	✓	
Automatic Configuration and FW Update		✓	✓	✓	✓	✓	
Additional Software Support		Supports Software User Modules (free space for UM)	838 MB	838 MB	128 MB	12 MB	12 MB
	WebAccess/DMP	✓	✓	✓	✓	✓	
	R-SeeNet	✓	✓	✓	-	-	
	WebAccess/VPN	✓	✓	✓	✓	✓	
	Python, Node-RED	✓	✓	✓	-	-	

Industrial Network Infrastructure



IMC-700

Intelligent Modular Media Converters

Centralized powered chassis design with SNMP management increases installation flexibility for high-end deployment.

- Supports iView² with capacity of more than 400 devices
- High-port density modules for Ethernet to fiber applications
- Comes with AC or DC power inputs for redundancy
- Supports Network management via iView² and SNMP for remote management
- Wide speed ranges up to 10GE transmission

Intelligent Modular Chassis

Part Number	Slot	Power Input
IMC-711	1	AC / DC
IMC-712	2	AC / DC
IMC-713*	3	Dual AC/DC
IMC-716*	6	Dual AC/DC
IMC-719*	20	Dual AC/DC

Unmanageable Slide-in Modules

Part Number	Optical Speed	Optical Mode	Wavelength	Distance	Optical Connector	Wide Temp.
IMC-790-2XFP	10Gbps	Various	Various	Various	2 x XFP	No
IMC-790-2SFP	10Gbps	Various	Various	Various	2 x SFP+	No
IMC-771-MM	1000Mbps	Multi-Mode	850 nm	550 m	1 x SC	No
IMC-771-SM	1000Mbps	Single-Mode	1310 nm	10 km	1 x SC	No
IMC-771-SE	1000Mbps	Single-Mode	1310 nm	40 km	1 x SC	No
IMC-771-SXL	1000Mbps	Single-Mode	1550 nm	100 km	1 x SC	No
IMC-771-SST	1000Mbps	Single-Strand	1310T/1550R	10 km	1 x SC	No
IMC-771-SSR	1000Mbps	Single-Strand	1550T/1310R	10 km	1 x SC	No
IMC-771-SSET	1000Mbps	Single-Strand	1310T/1550R	40 km	1 x SC	No
IMC-771-SSER	1000Mbps	Single-Strand	1550T/1310R	40 km	1 x SC	No
IMC-771-SS4T	1000Mbps	Single-Strand	1490T/1550R	70 km	1 x SC	No
IMC-771-SS4R	1000Mbps	Single-Strand	1550T/1490R	70 km	1 x SC	No
IMC-771-SFP	1000Mbps	Various	Various	Various	1 x SFP	Yes
IMC-770-MM	10/100/1000Mbps	Multi-Mode	850 nm	550 m	1 x SC	No
IMC-770-SM	10/100/1000Mbps	Single-Mode	1310 nm	10 km	1 x SC	No
IMC-770-SSR	10/100/1000Mbps	Single-Strand	1550T/1310R	10 km	1 x SC	No
IMC-770-SFP	10/100/1000Mbps	Various	Various	Various	1 x SFP	No
IMC-770I-2SFP	10/100/1000Mbps	Various	Various	Various	2 x SFP	Yes
IMC-751-SST	100Mbps	Single-Strand	1310T/1550R	20 km	1 x SC	No
IMC-751-SSR	100Mbps	Single-Strand	1550T/1310R	20 km	1 x SC	No
IMC-751-SSET	100Mbps	Single-Strand	1310T/1550R	40 km	1 x SC	No
IMC-751-SSER	100Mbps	Single-Strand	1550T/1310R	40 km	1 x SC	No
IMC-751-SE	100Mbps	Single-Mode	1310nm	40 km	1 x SC	No
IMC-751I-2SFP	100Mbps	Various	Various	Various	2 x SFP	Yes
IMC-750-SST	10/100Mbps	Single-Strand	1310T/1550R	20 km	1 x SC	No
IMC-750-SSR	10/100Mbps	Single-Strand	1550T/1310R	20 km	1 x SC	No
IMC-750-SSET	10/100Mbps	Single-Strand	1310T/1550R	40 km	1 x SC	No
IMC-750-SSER	10/100Mbps	Single-Strand	1550T/1310R	40 km	1 x SC	No
IMC-750I-SFP	10/100Mbps	Various	Various	Various	1 x SFP	Yes
IMC-750-SE	10/100Mbps	Single-strand	Various	Various	1 x SC	No

Manageable Slide-in Modules

Part Number	Optical Speed	Optical Mode	Wavelength	Distance	Optical Connector	Wide Temp.
IMC-784I-SFP	10/100/1000 Mbps	Various	Various	Various	2 x SFP	Yes
IMC-782-SFP	10/100/1000 Mbps	Various	Various	Various	1 x SFP	No
IMC-762-SST	10/100 Mbps	Single-Strand	1310T/1550R	20 km	1 x SC	No
IMC-762-SSR	10/100 Mbps	Single-Strand	1550T/1310R	20 km	1 x SC	No
IMC-762-SSET	10/100 Mbps	Single-Strand	1310T/1550R	40 km	1 x SC	No
IMC-762-SSER	10/100 Mbps	Single-Strand	1550T/1310R	40 km	1 x SC	No
IMC-762-SFP	10/100 Mbps	Various	-	Various	1 x SFP	No
IMC-721I-MMST	DS1	Multi-Mode	1310nm	40 km	1 x ST	Yes
IMC-721I-MM	DS1	Multi-Mode	1310nm	40 km	1 x SC	Yes
IMC-721I-SEST	DS1	Single-Mode	1300nm	5 km	1 x ST	Yes
IMC-721I-SE	DS1	Single-Mode	1300nm	5 km	1 x SC	Yes
IMC-721I-SL	DS1	Single-Mode	1310nm	80 km	1 x SC	Yes
IMC-721I-SST	DS1	Single-Strand	1310T/1550R	20 km	1 x SC	Yes
IMC-721I-SSR	DS1	Single-Strand	1550T/1310R	20 km	1 x SC	Yes
IMC-721I-SSET	DS1	Single-Strand	1310T/1550R	40 km	1 x SC	Yes
IMC-721I-SSER	DS1	Single-Strand	1550T/1310R	40 km	1 x SC	Yes
IMC-721I-SFP	DS1	Various	Various	Various	1 x SFP	Yes

Industrial Network Infrastructure



IMC-300

Miniature Media Converters

Featuring ultra-small design, these miniature media converters fit almost every corner of your application. Using them with a centralized powered chassis will highly

- Dimensions (H x W x D) 2.11 x 4.57 x 8.51 cm (0.83 x 1.80 x 3.35 in) Measuring only 3.5 x 2 inches
- Supports Link Fault Pass Through (LFPT)
- The centralized powered chassis allows for multiple Advantech miniature media converters sharing a central power source in one chassis

IMC-400

Compact Media Converters

These compact media converters are built with embedded power supplies and free users from purchasing extra power sourcing devices, saving cost, and reducing wiring complexity.

- Supports internal AC power supply
- Supports automatic link restoration
- Provides rate conversion, distance extension, multiple types of fixed fiber connectors or open slots for Small Form-Factor Pluggable (SFP) connections



Compact Media Converter Series

Part Number	Ethernet Speed	Optical Mode	Wavelength	Distance	Optical Connector
IMC-450-MM-A	10/100 Mbps	Multi-Mode	1300 nm	5 km	SC / ST
IMC-450-SE-A	10/100 Mbps	Single-Mode	1310 nm	40 km	SC / ST
IMC-450-SL-A	10/100 Mbps	Single-Mode	1310 nm	80 km	SC / ST
IMC-470-MM	10/100/1000 Mbps	Multi-Mode	850 nm	550 m	SC
IMC-470-M1	10/100/1000 Mbps	Multi-Mode	1300 nm	2 km	SC
IMC-470-SM	10/100/1000 Mbps	Single-Mode	1310 nm	10 km	SC
IMC-470-SE	10/100/1000 Mbps	Single-Mode	1310 nm	40 km	SC
IMC-470-SFP	10/100/1000 Mbps	Various	Various	Various	SFP

10/100Mbps Miniature Media Converters

Part Number	Optical Mode	Wavelength	Distance	Optical Connector
IMC-350-M8ST-PS-A	Multi-Mode	850 nm	2 km	ST
IMC-350-M8ST-A	Multi-Mode	850 nm	2 km	ST
IMC-350-M8-PS-A	Multi-Mode	850 nm	2 km	SC
IMC-350-M8-A	Multi-Mode	850 nm	2 km	SC
IMC-350-USB-A	Multi-Mode	850 nm	2 km	SC
IMC-350-MMST-PS-A	Multi-Mode	1300 nm	5 km	ST
IMC-350-MMST-A	Multi-Mode	1300 nm	5 km	ST
IMC-350-MM-PS-A	Multi-Mode	1300 nm	5 km	SC
IMC-350-MM-A	Multi-Mode	1300 nm	5 km	SC
IMC-350-SEST-PS-A	Single-Mode	1310 nm	40 km	ST
IMC-350-SEST-A	Single-Mode	1310 nm	40 km	ST
IMC-350-SE-PS-A	Single-Mode	1310 nm	40 km	SC
IMC-350-SE-A	Single-Mode	1310 nm	40 km	SC
IMC-350-SL-PS-A	Single-Mode	1310 nm	80 km	SC
IMC-350-SL-A	Single-Mode	1310 nm	80 km	SC
IMC-350-SSMT-PS-A	Single-Strand	1310T/1550R	2 km	SC
IMC-350-SSMR-PS-A	Single-Strand	1550T/1310R	2 km	SC
IMC-350-SST-PS-A	Single-Strand	1310T/1550R	20 km	SC
IMC-350-SSR-PS-A	Single-Strand	1550T/1310R	20 km	SC
IMC-350-SFP-PS-A	Various	Various	Various	SFP
IMC-350-SFP-A	Various	Various	Various	SFP

Industrial Grade 10/100Mbps Miniature Media Converters with PoE-PD

Part Number	Optical Mode	Wavelength	Distance	Optical Connector
IMC-350I-M8ST-PS-A	Multi-Mode	850 nm	2 km	ST
IMC-350I-M8ST-A	Multi-Mode	850 nm	2 km	ST
IMC-350I-M8-PS-A	Multi-Mode	850 nm	2 km	SC
IMC-350I-M8-A	Multi-Mode	850 nm	2 km	SC
IMC-350I-MMST-PS-A	Multi-Mode	1300 nm	5 km	ST
IMC-350I-MMST-A	Multi-Mode	1300 nm	5 km	ST
IMC-350I-MM-PS-A	Multi-Mode	1300 nm	5 km	SC
IMC-350I-MM-A	Multi-Mode	1300 nm	5 km	SC
IMC-350I-SEST-PS-A	Single-Mode	1310 nm	40 km	ST
IMC-350I-SEST-A	Single-Mode	1310 nm	40 km	ST
IMC-350I-SE-PS-A	Single-Mode	1310 nm	40 km	SC
IMC-350I-SE-A	Single-Mode	1310 nm	40 km	SC
IMC-350I-SL-PS-A	Single-Mode	1310 nm	80 km	SC
IMC-350I-SST-PS-A	Single-Strand	1310T/1550R	20 km	SC
IMC-350I-SST-A	Single-Strand	1310T/1550R	20 km	SC
IMC-350I-SSR-PS-A	Single-Strand	1550T/1310R	20 km	SC
IMC-350I-SSR-A	Single-Strand	1550T/1310R	20 km	SC
IMC-350I-SFP-PS-A	Various	Various	Various	SFP

10/100/1000Mbps Miniature Media Converters

Part Number	Optical Mode	Wavelength	Distance	Optical Connector
IMC-370-MM-PS-B	Multi-Mode	850 nm	550 m	SC
IMC-370-MMST-PS-B	Multi-Mode	850 nm	550 m	ST
IMC-370-SM-PS-B	Single-Mode	1310 nm	10 km	SC
IMC-370-SE-PS-B	Single-Mode	1310 nm	40 km	SC
IMC-370-SL-PS-B	Single-Mode	1550 nm	80 km	SC
IMC-370-SST-PS-B	Single-Strand	1310T/1550R	15 km	SC
IMC-370-SSR-PS-B	Single-Strand	1550T/1310R	15 km	SC
IMC-370-SFP-PS-B	Various	Various	Various	SFP

Industrial Grade 10/100/1000Mbps Miniature Media Converters

Part Number	Optical Mode	Wavelength	Distance	Optical Connector
IMC-370I-MM-B	Multi-Mode	850 nm	550 m	SC
IMC-370I-MM-PS-B	Multi-Mode	850 nm	15 km	SC
IMC-370I-SM-B	Single-Mode	1310 nm	15 km	SC
IMC-370I-SM-PS-B	Single-Mode	1310 nm	15 km	SC
IMC-370I-SE-PS-B	Single-Mode	1310 nm	30 km	SC
IMC-370I-SST-PS-B	Single-Strand	1310T/1550R	15 km	SC
IMC-370I-SSR-PS-B	Single-Strand	1550T/1310R	15 km	SC
IMC-370I-SFP-B	Various	Various	Various	SFP
IMC-370I-SFP-PS-B	Various	Various	Various	SFP

Industrial Network Infrastructure

PoE+/ PoE Media Converters

1 Gbps PoE & PoE+ Media Converters w/ 2 x RJ-45

Part Number	PSE	Optical Mode	Wavelength	Distance	Optical Connector	Internal Power
IMC-380-SFP	1 x PoE	Various	Various	Various	SFP	No
IMC-390-MM	2 x PoE+	Multi-Mode	850 nm	550 m	SC	No
IMC-390-M1	2 x PoE+	Multi-Mode	1310 nm	2 km	SC	No
IMC-390-SM	2 x PoE+	Single-Mode	1310 nm	15 km	SC	No
IMC-390-SFP	2 x PoE+	Various	Various	Various	SFP	No
IMC-595MPI	2 x PoE+++	Various	Various	Various	SFP	No
EKI-2741FPI	1 x PoE+	Various	Various	Various	SFP	No
EKI-2742FPI	2 x PoE+	Various	Various	Various	SFP	No
EKI-2741FHPI	1 x PoE++	Various	Various	Various	SFP	No

Industrial Extenders

Combining data and power together, IMC-150LPI and IMC-150LI long reach extenders are brand new products which break the 100-meter limitation to extend Power over Ethernet (PoE) power and data transmission distance. The extenders flexibly lengthen existing PoE networks to reach remote IP devices. Compliant with IEEE 802.3at PoE+ standards, they deliver power over cables without distance limitations of traditional copper wires. DIP switches for various LAN data rates strike the perfect balance of data rates and distance for each device.

Part Number	Ethernet Speed	PoE+	UTP	Coaxial
IMC-150LPI	10/100 Mbps	PSE/PD	2 x RJ-45	-
IMC-150LI	10/100 Mbps	-	2 x RJ-45	1 x BNC
IMC-150LPC-M/R	10/100 Mbps	PSE/PD	1 x RJ45	1 x BNC

Media Converters



Model name	EKI-2741SL/ML	EKI-2741FL	EKI-2541SL/ML
Standard	IEEE 802.3, 802.3u, 802.3ab, 802.3x, 802.3z	IEEE 802.3, 802.3u, 802.3ab, 802.3x, 802.3z	IEEE 802.3, 802.3u, 802.3x
RJ45 Port Interface	1 x 10/100/1000Base-T(X)	1 x 10/100/1000Base-T(X)	1 x 10/100Base-T(X)
RJ45 Transmission Distance	1000 m	1000 m	100 m
Fiber Port Interface	SL: Singel Mode ML: Multi Mode	SFP	SL: Singel Mode ML: Multi Mode
Fiber Port Connector	1	1	1
Fiber Transmission Distance	SL: Up to 10km ML: Up to 550m	-	SL: Up to 30km ML: Up to 2km
Switch Fabric Speed	1.25Gbps	1.25Gbps	125Mbps
Jumbo Frame	9216 bytes	9216 bytes	-
Dimensions (W x H x D) mm	22 x 101 x 75 mm	23 x 60 x 75 mm	22 x 101 x 75 mm
Dimensions (W x H x D) mm	75 x 22.6 x 101.2 mm	60.88 x 23 x 75.58 mm	75 x 22.6 x 101.2 mm
Dimensions (W x H x D) inch	2.95" x 0.89" x 3.98"	2.4" x 0.91" x 2.98"	2.95" x 0.89" x 3.98"
IP Grade	IP30	IP30	IP30
Enclosure	Metal	Metal	Metal
Weight	226 g	158 g	213 g
Operating Temperature	0~50°C	0~50°C	0~50°C
Storage Temperature	-40~70°C	-40~70°C	-40~70°C
Relative Humidity (Non-condensing)	5% ~ 90% RH (non-condensing)	5% ~ 90% RH (non-condensing)	5% ~ 90% RH (non-condensing)
Time (25 degree C)	1269493 hours	1031686 hours	1776203 hours
Method	Telcordia(Relax), GB	Telcordia(Relax), GB	Telcordia(Relax), GB
Operating Voltage	90-264 V _{AC}	90-264 V _{AC}	90-264 V _{AC}
Operating Current (DC 5V)	SL: 0.61 A ML: 0.6 A	0.52 A	SL: 0.31 A ML: 0.3 A
Power Consumption (DC 5V)	SL: 3.1 W ML: 3.0W	2.6 W	SL: 1.6 W ML: 1.5 W
Reverse Polarity	Present	Present	Present
Safety	LVD EN60950	LVD EN60950	LVD EN60950
EMC	CE, FCC	CE, FCC	CE, FCC
EMI	EN55024/EN 55032 Class A, FCC Part 15 Subpart B Class A		
EMS	EN 61000-4-2, EN 61000-4-3, EN 61000-4-4, EN 61000-4-5, EN 61000-4-6, EN 61000-4-8, EN61000-4-11		
Freefall	IEC 60068-2-32		
Vibration	IEC 60068-2-6		
Warranty Period	2 years		

VDSL Solutions



Model name	EKI-1751	EKI-1751I	EKI-1751PI-M/R	EKI-7708G-2FV	EKI-7712G-2FV
Standard	IEEE 802.3, 802.3u, 802.3x	IEEE 802.3, 802.3u, 802.3x	M: IEEE 802.3, 802.3u, 802.3x R: IEEE 802.3, 802.3u, 802.3x, 802.3af/at	IEEE 802.3, 802.3u, 802.3x, 802.3ad, 802.3ab, 802.3z, 802.1D, 802.1w, 802.1s, 802.1P, 802.1Q, 802.1X	
RJ45 Port Interface	1 * 10/100BaseT(X) + 1 * VDSL	2 * RJ45 Ethernet port + 1 * M12 Ethernet port	4* RJ45 PoE Port	4 x RJ45 (Gigabit Ethernet) 2 x SFP (mini-GBIC) 2 x VDSL ports	8 x RJ45 (Gigabit Ethernet) 2 x SFP (mini-GBIC) 2 x VDSL ports
RJ45 Transmission Distance	100 m	100 m	100 m	Ethernet: Up to 100 m SFP: Up to 110 km (depends on SFP) VDSL2: With the rate of 100Mbps speed up to 400 m	
RJ45 w/ PoE Quantity	-	-	4	0	0
MAC Table Size	1024	2K	-	8K	8K
Packet Buffer Size	1024 byte	1M bit	1M bit	4.1Mbit	4.1Mbit
Switch Fabric Speed	100Mbps	100Mbps	100Mbps	Supports 1000/100	Supports 1000/100
Jumbo Frame	-	-	-	1,518-10,240	1,518-10,240
Dimensions (W x H x D)	72.5x 22.8 x 96.2 mm	62 x 135 x 106.5 mm	62 x 135 x 106.5 mm	74 x 152 x 105 mm	74 x 152 x 105 mm
IP Grade	IP30	IP30	IP30	IP30	IP30
Enclosure	Metal	Metal	Metal	Metal	Metal
Weight	0.22kg	0.67kg	M: 0.7kg R: 0.75kg	1.1kg	1.1kg
Mounting Type	Din Rail	Din Rail or Wall Mount	Din Rail or Wall Mount	Din Rail or Wall Mount	Din Rail or Wall Mount
Operating Temperature	0~45°C (32~113°F)	-40~75°C (-40~167°F)	-40~75°C (-40~167°F)	-20~45C	-20~45C
Storage Temperature	-40~70°C (-40~158°F)	-40~85°C (-40~185°F)	-40~85°C (-40~185°F)	-40~85C	-40~85C
Relative Humidity (Non-condensing)	0 ~ 95%	5 ~ 95%	5 ~ 95%	10 ~ 95%	10 ~ 95%
Time	901,329	225,664	M: 175496 R: 159617		
Method	MIL-HDBK-217 FN2	MIL-HDBK-217 FN2	MIL-HDBK-217 FN2		
Operating Voltage	12 V _{DC}	12- 48 V _{DC}	48 - 57V _{DC}	12- 48 V _{DC}	12- 48 V _{DC}
Power Consumption	4.2 W (system)	5 W (system)	M: 65 W (system) R: 125 W (system)	15W@48Vdc (system)	15W@48Vdc (system)
Connectors	DC Jack (power)	6-pin removable screw terminal (power & relay)		6-pin screw terminal block connector 4-pin for power; 2-pin for relay	
Safety	UL 60950 LVD EN 62368	UL 60950 LVD EN 62368	UL 60950 LVD EN 62368	UL61010 LVD EN62368	UL61010 LVD EN62368
EMC	CE, FCC	CE, FCC	CE, FCC	CE, FCC	CE, FCC
EMI	EN 55032 EN 61000-6-4, FCC Part 15 Subpart B EN 61000-6-4, FCC Part 15 Subpart B	EN 55011/ EN 55032 EN 61000-6-4, FCC Part 15 Subpart B		EN 55032 Class A, EN 61000-6-4, FCC Part 15 Subpart B Class A	
EMS		EN 61000-4-2 , EN 61000-4-3 , EN 61000-4-4 , EN 61000-4-5 , EN 61000-4-6 , EN 61000-4-8		EN 61000-4-2	EN 61000-4-2
Shock	-	IEC 60068-2-27	IEC 60068-2-27	IEC 60068-2-27	IEC 60068-2-27
Freefall	-	IEC 60068-2-32	IEC 60068-2-32	IEC 60068-2-32	IEC 60068-2-32
Vibration	-	IEC 60068-2-6	IEC 60068-2-6	IEC 60068-2-6	IEC 60068-2-6
Warranty Period	5 years	5 years	5 years	5 years	5 years

Industrial Network Infrastructure

Media Converter with PoE



Description		EKI-2741FPI	EKI-2742FPI	EKI-2741FHPI
Connectivity	10/100/1000Based-Tx, fixed	-	-	-
	10/100/1000Base-T PoE, Fixed	1	2	1
	Open SFP slot (GbE)	1	1	1
	Performance	-	-	-
	Auto MDI/MDI-X	✓	✓	✓
	Auto Negotiation	✓	✓	✓
	Store-and-Forward Switching	✓	✓	✓
	Link Fault Pass-Through (LFP)	✓	-	✓
	MTBF	743,594Hrs	717,339Hrs	730,083Hrs
Traffic Control	Jumbo frame size	10Kbytes	10Kbytes	10Kbytes
	IEEE 802.3x flow control	✓	✓	✓
Physical	Housing Dimensions (W x H x D) mm	36.7 x 108.4 x 103.5 mm	36.7 x 108.4 x 103.5 mm	36.7 x 108.4 x 103.5 mm
	Mounting Type	DIN-Rail/Wall mount	DIN-Rail/Wall mount	DIN-Rail/Wall mount
	IP rating	IP31	IP31	IP31
Power	Power Input voltage	48V _{DC}	48V _{DC}	48V _{DC}
	Power Consumption	34W	63.5W	63.5W
	Reverse protection	✓	✓	✓
Certification	UL60950-1	-	-	-
	UL508	✓	✓	✓
	UL-C1D2	✓	✓	✓
	FCC	✓	✓	✓
	CE	✓	✓	✓

PoE Injectors



Description		EKI-2701HPI	EKI-2701HP	EKI-2701HP-AC	EKI-2701MPI	EKI-2701MPI-5G
Connectivity	10/100/1000Based-Tx, fixed	1	1	-	-	-
	10/100/1000Base-T PoE, Fixed	1	1	1	1	1 (multi data rate 10M / 100M / 1G / 2.5G / 5G)
	Open SFP slot (GbE)	-	-	-	-	-
	Performance	-	-	-	-	-
	Auto MDI/MDI-X	-	-	-	-	-
	Auto Negotiation	-	-	✓	✓	✓
	Store-and-Forward Switching	-	-	✓	✓	✓
	Link Fault Pass-Through (LFP)	-	-	-	-	-
	MTBF	1419817Hrs	1419817Hrs	1,999,263 Hrs	-	-
Traffic Control	Jumbo frame size	-	-	-	-	-
	IEEE 802.3x flow control	-	-	-	-	-
Physical	Housing Dimensions (W x H x D) mm	37x140x95 mm	30x140x95 mm	65x36x140 mm	84x80x25 mm	84x80x25 mm
	Mounting Type	DIN-Rail/Wall mount	DIN-Rail/Wall mount	Desktop	DIN-Rail/Wall mount	DIN-Rail/Wall mount
	IP rating	IP30	IP30	N/A	IP30	IP30
Power	Power Input voltage	24 - 48V _{dc}	24 - 48V _{dc}	100 - 240V _{ac}	54 - 57V _{dc}	54 - 57V _{dc}
	Power Consumption	33.36W	33.36W	<36W	Max 92W	Max 92W
	Reverse protection	✓	✓	-	✓	✓
Certification	UL60950-1	-	-	UL62368	UL62368	UL62368
	UL508	-	-	-	-	-
	UL-C1D2	-	-	-	-	-
	FCC	✓	✓	✓	✓	✓
	CE	✓	✓	✓	✓	✓

PoE Splitters



Description		EKI-2701PSI	BB-EP5G202
Connectivity	10/100/1000Based-Tx, fixed	1	1
	10/100/1000Base-T PoE, Fixed	1	1
	Open SFP slot (GbE)	-	-
	Performance	-	-
	Auto MDI/MDI-X	-	-
	Auto Negotiation	-	-
	Store-and-Forward Switching	-	-
	Link Fault Pass-Through (LFP)	-	-
	MTBF	-	-
Traffic Control	Jumbo frame size	-	-
	IEEE 802.3x flow control	-	-
Physical	Dimensions (WxHxD) mm	37x140x95	30x140x95
	Mounting Type	DIN-rail/Wall mount	DIN rail (sold separately)
	IP rating	IP30	IP30
Power	Power Input voltage	44~57V _{DC}	48V _{DC}
	PoE output power	12.95 W @24 V _{DC}	25W @24 V _{DC}
	Reverse protection	Power isolation & short circuit protection	✓
Certification	UL60950-1	✓	-
	UL508	-	✓
	UL-C1D2	-	-
	FCC	✓	-
	CE	✓	✓

SFP Modules

The small form-factor pluggable (SFP) is a hot-swappable optical module transceiver in a compact size and a variety of transmitter and receiver specifications for data communications. They are used for when a transmission service is needed between points further than 100 meters beyond where traditional copper cables can reach, SFP modules can easily overcome these problems.



Industrial Grade 1.25 Gbps SFP Modules w/ DDM

Part Number	Wavelength	Optical Mode	Distance	Optical Connector	Sensitivity (dB)
SFP-GMM-550	850 nm	Multi-Mode	550 m	LC	-17
SFP-GMM-2K	1310 nm	Multi-Mode	2 km	LC	-19
SFP-GSM-20K	1310 nm	Single-Mode	20 km	LC	-23
SFP-GSM-30K	1310 nm	Single-Mode	30 km	LC	-24
SFP-GSM-40K	1550 nm	Single-Mode	40 km	LC	-24
SFP-GSS-40KTX-LC	1310T/1550R	Single-Strand	40 km	LC	-23
SFP-GSS-40KRX-LC	1550T/1310R	Single-Strand	40 km	LC	-23
SFP-GS4-70KTX-LC	1490T/1550R	Single-Strand	70 km	LC	-24
SFP-GS4-70KRX-LC	1550T/1490R	Single-Strand	70 km	LC	-24
SFP-GSS-20KTX	1310T/1550R	Single-Strand	20 km	SC	-23
SFP-GSS-20KRX	1550T/1310R	Single-Strand	20 km	SC	-23
SFP-GSS-40KTX	1310T/1550R	Single-Strand	40 km	SC	-23
SFP-GSS-40KRX	1550T/1310R	Single-Strand	40 km	SC	-23
SFP-GS4-70KTX	1490T/1550R	Single-Strand	70 km	SC	-24
SFP-GS4-70KRX	1550T/1490R	Single-Strand	70 km	SC	-24

Industrial Grade 1.25 Gbps SFP Modules

Part Number	Wavelength	Optical Mode	Distance	Optical Connector	Sensitivity (dB)
SFP-GSX/LCI-AE	850 nm	Multi-Mode	550 m	LC	-17
SFP-GLX/LCI-10E	1310 nm	Single-Mode	10 km	LC	-20
SFP-GLX/LCI-20E	1310 nm	Single-Mode	20 km	LC	-23
SFP-GLX/LCI-40E	1310 nm	Single-Mode	40 km	LC	-23

1.25 Gbps SFP Modules

Part Number	Wavelength	Optical Mode	Distance	Optical Connector	Sensitivity (dB)
SFP-GSX/LC-AE	850 nm	Multi-Mode	550 m	LC	-17
SFP-GLX/LC-10E	1310 nm	Single-Mode	10 km	LC	-20
SFP-GLX/LC-20E	1310 nm	Single-Mode	20 km	LC	-23
SFP-GLX/LC-40E	1310 nm	Single-Mode	40 km	LC	-23

Industrial Grade 100-155 Mbps SFP Modules w/ DDM

Part Number	Wavelength	Optical Mode	Distance	Optical Connector	Sensitivity (dB)
SFP-FMM850-2K	850 nm	Multi-Mode	2 km	LC	-26
SFP-FMM-2K	1300 nm	Multi-Mode	2 km	LC	-32
SFP-FSM-20K	1310 nm	Single-Mode	20 km	LC	-35
SFP-FSM-40K	1310 nm	Single-Mode	40 km	LC	-36
SFP-FSM-80K	1310 nm	Single-Mode	80 km	LC	-36
SFP-FSS-20KTX	1310T/1550R	Single-Strand	20 km	SC	-32
SFP-FSS-20KRX	1550T/1310R	Single-Strand	20 km	SC	-32
SFP-FSS-40KTX	1310T/1550R	Single-Strand	40 km	SC	-34
SFP-FSS-40KRX	1550T/1310R	Single-Strand	40 km	SC	-34

Industrial Grade 100-155 Mbps SFP Modules

Part Number	Wavelength	Optical Mode	Distance	Optical Connector	Sensitivity (dB)
SFP-FXM/LCI-AE	1310 nm	Multi-Mode	2 km	LC	-32
SFP-FXS/LCI-30E	1310 nm	Single-Mode	30km	LC	-34

10 Gbps SFP+ & XFP Modules w/ DDM

Part Number	Wavelength	Optical Mode	Distance	Connector	Sensitivity (dB)
SFP-XMM-33-XFP	850 nm	Multi-Mode	33 m	LC	-9.9
SFP-XSM-10K-XFP	1310 nm	Single-mode	10 km	LC	-14.4
SFP-XSM-40K-XFP	1550 nm	Single-mode	40 km	LC	-16
SFP-XSM-80K-XFP	1550 nm	Single-mode	80 km	LC	-23
SFP-XMM-33	850 nm	Multi-Mode	33 m	LC	-9.9
SFP-XSM-10K	1310 nm	Single-mode	10 km	LC	-14.4
SFP-XMM-LC-400	850nm	Multi-mode	400 m	LC	-11.1
SFP-XSM-LC-10K	1310nm	Single-mode	10 km	LC	-12.6
SFP-XSM-LC-20K	1310nm	Single-mode	20 km	LC	-12.6
SFP-XSM-LC-40K	1310nm	Single-mode	40 km	LC	-12.6
SFP-XSM5-LC-40K	1550nm	Single-mode	40 km	LC	-15.5
SFP-XSM-LC-80K	1550nm	Single-mode	80 km	LC	-23
SFP-XSS-10KTX-LC	1270T/1330R	Single-mode	10 km	LC	-15.5
SFP-XSS-10KRX-LC	1330T/1270R	Single-mode	10 km	LC	-15.5
SFP-XSS-40KTX-LC	1270T/1330R	Single-mode	40 km	LC	-15.5
SFP-XSS-40KRX-LC	1330T/1270R	Single-mode	40 km	LC	-15.5

Industrial Grade 10 Gbps SFP+ & XFP Modules w/ DDM

Part Number	Wavelength	Optical Mode	Distance	Connector	Sensitivity (dB)
SFP-XMM-LCI-400	850nm	Multi-mode	400 m	LC	-11.1
SFP-XSM-LCI-10K	1310nm	Single-mode	10 km	LC	-12.6
SFP-XSM-LCI-20K	1310nm	Single-mode	20 km	LC	-12.6
SFP-XSM-LCI-40K	1310nm	Single-mode	40 km	LC	-12.6
FP-XSM5-LCI-40K	1550nm	Single-mode	40 km	LC	-15.5
SFP-XSM-LCI-80K	1550nm	Single-mode	80 km	LC	-23

Copper SFP Modules

Part Number	Speed	Distance	Wide Temp.
SFP-GTX	10/100/1000 Mbps	100 m	-
SFP-GTXB	1000 Mbps	100 m	-
SFP-GTX/RJ45I-AE	1000 Mbps	100 m	Yes
SFP-10GTX	1G/2.5G/5G/10Gbps	100m-1G; 50m-2.5/5G; 10m-10G	-
SFP-10GTXI	1G/2.5G/5G/10Gbps	100 m	Yes

IMC-574I-SFP

Industrial 10/100/1000Mbps Intelligent Media Converter

A value-based, managed Gigabit Ethernet solution that comes with two SFP ports and two fixed 10/100/1000Base-T copper ports. They support wide operating temperatures for use in extreme or harsh environments and features OAM and 1+1 with troubleshooting functionality.

- Converts Ethernet data to fiber optic signals
- Supports wide temperature operation for harsh environments
- Offers Link Fault Pass Through (LFPT) for easy troubleshooting fault conditions
- Supports OAM and 1+1 protection



Ordering P/N: IMC-574I-SFP-PS-A

Intelligent Media Converter, Wide-Temp, 1000Base-TX/FX, SFP

Regional Service & Customization Centers

China | Kunshan
86-512-5777-5666

Taiwan | Taipei
886-2-7732-3399

Netherlands | Eindhoven
31-40-267-7000

Poland | Warsaw
00800-2426-8080

USA | Milpitas, CA
1-408-519-3898

Worldwide Offices

Greater China

China
Toll Free 800-810-0345
Beijing 86-10-6298-4346
Shanghai 86-21-3632-1616
Shenzhen 86-755-8212-4222
Chengdu 86-28-8545-0198
Hong Kong 852-2720-5118

Taiwan
Toll Free 0800-777-111
Taipei & IoT Campus 886-2-2792-7818
Taichung 886-4-2372-5058
Kaohsiung 886-7-392-3600

Middle East and Africa

Israel 072-2410527

Asia

Japan
Toll Free 0800-500-1055
Tokyo 81-3-6802-1021
Osaka 81-6-6267-1887
Nagoya 81-0800-500-1055

Korea
Toll Free 080-363-9494
Seoul 82-2-3663-9494

Singapore
Singapore 65-6442-1000

Malaysia
Kuala Lumpur 60-3-7725-4188
Penang 60-4-537-9188

Thailand
Bangkok 66-02-2488306-9

Vietnam
Hanoi 84-24-3399-1155

Indonesia
Jakarta 62-21-751-1939

Australia
Toll Free 1300-308-531
Melbourne 61-3-9797-0100

India
Bangalore 91-80-2545-0206
Pune 91-94-2260-2349

Europe

Netherlands
Eindhoven 31-40-267-7000
Breda 31-76-523-3100

Germany
Toll Free 00800-2426-8080/81
Munich 49-89-12599-0
Düsseldorf 49-2103-97-855-0

France
Paris 33-1-4119-4666

Italy
Milan 39-02-9544-961

UK
Newcastle 44-0-191-262-4844
London 44-0-870-493-1433

Spain
Madrid 34-91-668-86-76

Sweden
Stockholm 46-722-293423

Poland
Warsaw 48-22-31-51-100

Russia
Moscow 8-800-555-01-50
St. Petersburg 8-800-555-81-20

Czech Republic
Ústí nad Orlicí 420-465-52-44-21

Ireland
Galway 353-91-792444

Americas

North America
Toll Free 1-888-576-9668
Cincinnati 1-513-742-8895
Milpitas 1-408-519-3898
Irvine 1-949-420-2500
Ottawa 1-815-434-8731

Brazil
Toll Free 0800-770-5355
São Paulo 55-11-5592-5367

Mexico
Toll Free 1-800-467-2415
Mexico City 52-55-6275-2727

ADVANTECH

Enabling an Intelligent Planet

www.advantech.com

Please verify specifications before quoting. This guide is intended for reference purposes only. All product specifications are subject to change without notice.

No part of this publication may be reproduced in any form or by any means, electronic, photocopying, recording or otherwise, without prior written permission of the publisher.

All brand and product names are trademarks or registered trademarks of their respective companies.

© Advantech Co., Ltd. 2022



8600000570