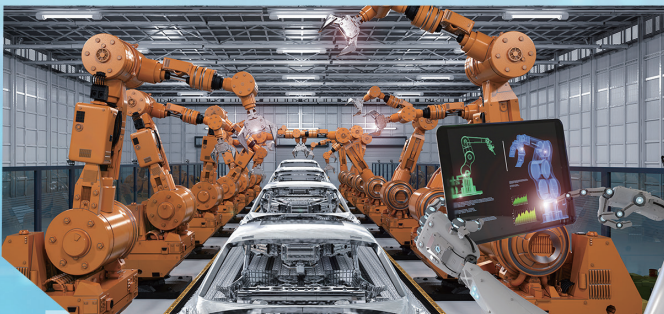


Industrial Display Solutions

Leading Industrial Display Expert

- ✓ Leading Technology and Capability
- ✓ Product Offerings
- ✓ Design To Order Services
- ✓ Market Solutions
- ✓ Product Selection



ADVANTECH

Enabling an Intelligent Planet

www.advantech.com

Industrial Display Systems

Advantech designs, develops, and manufactures display systems that meet the demands of various global system integration markets—these include gaming, transportation, and medical markets. By combining proven technologies and flexible manufacturing, Advantech creates class leading solutions that deliver significant product differentiation and competitive advantages. Our customer-centric approach reinforces all of our activities and is an essential part of the thousands of products we ship daily.

Pioneering Industrial Display Technologies

Advantech is dedicated to developing industry-leading display technologies. We are a pioneer in optical enhancement solutions including high brightness optical bonding, curved play solutions, panel resizing, and wide temperature solutions.



Global Design and Manufacturing Centers



ATMC Taiwan

- 10,000 clean room
- Global design center
- 30K monthly capacity



AASC Milpitas, USA

- 10,000 clean room
- 5K monthly capacity

Global In-house Design and Manufacturing Capabilities

Advantech has built in-house class 1,000/10,000 LCD clean rooms in Taiwan, China, and North America with a monthly capacity of 30,000 units. We offer reliable high-quality industrial display products.

15+ Years of Supplying the Global Industrial Displays Market

Advantech's Industrial Display Solutions team has 15 years of experience building high quality leading edge industrial display products and is dedicated to helping customers adopt the latest technology.



AKMC Kunshan, China

- 1,000 clean room
- 20K monthly capacity



AESC Eindhoven, Netherlands

- 10,000 clean room
- Design to order assembly



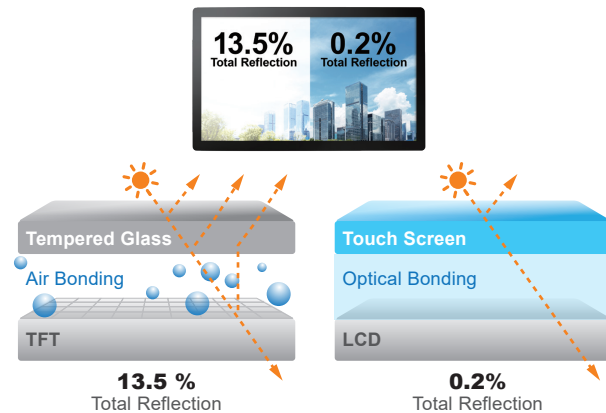
AUK London

- European design center
- Mechanical & electronic design

Leading Technologies

OPTICAL BONDING

Optical bonding technology removes air gaps by injecting optical glue into the space between a cover glass and the LCD panel. This reduces sunlight reflections to improve image quality. Advantech develops both Wet Bond (OCR) and Dry Bond (OCA) technologies with high vibration and impact resistance to enhance LCD readability and durability.



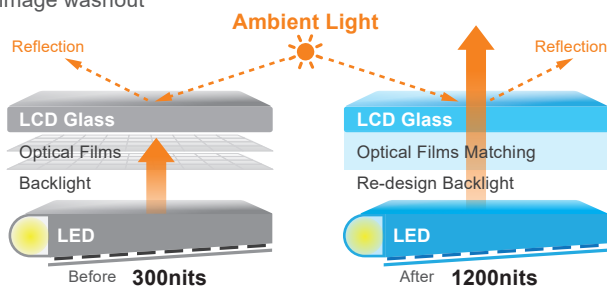
Before

Ambient sunlight causes image washout



After

Sunlight reading issue

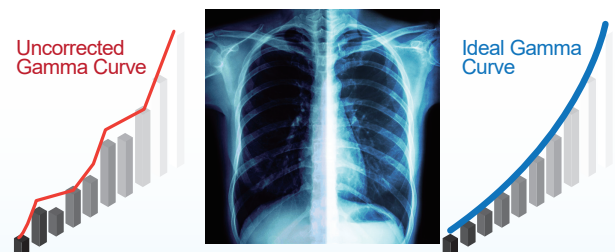


HIGH BRIGHTNESS

Using a built-in LED light bar, optical films, and high-efficiency thermal technology, Advantech's solution can boost brightness up to 2000nits. The lowpower backlight source uses 20% less energy than competing products with the same level of brightness. Advantech also offers an excellent automatic dimming solution which can save up to 50% on power consumption.

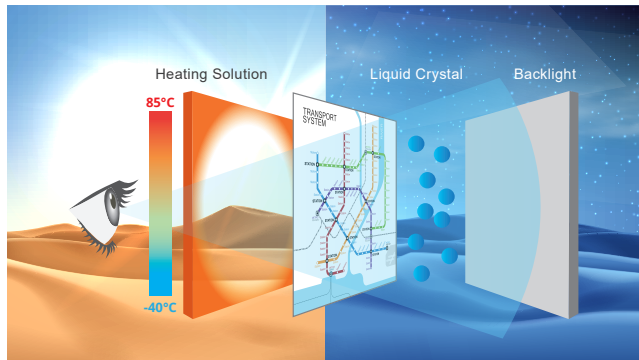
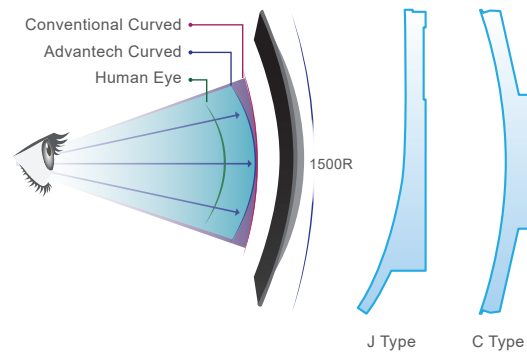
MEDICAL IMAGING

Advantech's solutions include IPS displays and AD boards with color management functionality to help improve brightness stability, gray scale, color temperature, and color gamut to ensure uniformity. Our solution is fully compliant with the DICOM part 14 standards. It also incorporates WiseAgent, a Network Remote Diagnostics Tool for remote control and monitoring.



CURVED DISPLAY

Advantech curved display technology is available with concave or convex surfaces including 1500R or 1200R. Packaged together with an industrial grade video card and power supply, our solution is available with standard video inputs and can be specified with or without a 10-point touch overlay. Advantech also provides open frame monitors and panel module products to support different application needs.



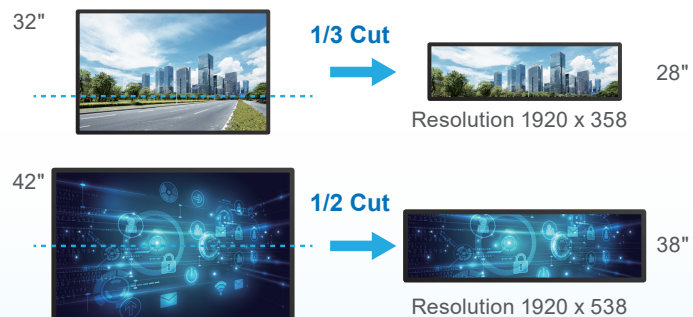
WIDE TEMPERATURE

Advantech Thermal Impedance Solution uses a heating film and a built-in intelligent AD board for auto on/off control. This allows the LCD display to raise the temperature to accommodate different working environments. It can also turn the heating film/glass on or off automatically to save energy.

LCD RESIZING

Advantech's stretched display panel is cut by 1/2 from a 42" LCD to a 38" stretched LCD, or by 1/3, from a 32" panel to a 28" stretched LCD. Both cut panels retain full functionality and performance. Advantech provides a customized panel resizing service to fulfill customers' requirements.

Resolution 1920 x 1080 (FHD)



Resolution 1920 x 1080 (FHD)

Industrial Touch LCD Kit

The Advantech industrial LCD Kit series provides industrial grade touch LCD panels integrated with resistive touch screens, projective touch screens, and compatible AD board kit solutions. Advantech's LCD kit series is fully compatible with all Advantech's embedded boards and features LVDS and backlight cables options, ready VBIOS, and touch driver support.

IDK-1000 Indoor LCD Kit

The Advantech IDK-1000 series features industrial grade touch LCD panels with integrated resistive or projected capacitive touch screens. This series supports 250~500nits brightness and is ideal for indoor applications.

Key Features



DICOM model available



5.7"~21.5"



LVDS interface



Resistive/PCAP touchscreen



IDK-2000 Outdoor LCD Kit

Advantech IDK-2000 series delivers 1200nits sunlight readable LCD panels perfect for outdoor applications. Touch screen options include resistive touch and projected capacitive touch.

Key Features



Sunlight readable



8.4"~21.5"



LVDS interface



Resistive Touch



Industrial Touch Monitor

Advantech provides comprehensive monitor solutions with different front frame chassis options. Customers can make choices based on their integration needs. All of Advantech's industrial grade monitors feature slim and light designs for easy and efficient installation.

IDS-3100 Open Frame Monitors

Advantech Open Frame Monitor IDS-3100 series delivers touch screen monitors with a slim open-front frame design. This series supports rear and VESA mounting using an integrated bracket design for easy installation.

Key Features



6.5"~27"



Wide temperature



Resistive/PCAP touchscreen



VESA mount
75 x 75 &
100 x 100 mm



Industrial Touch Monitor

IDS-3200 Panel Mount Monitors

Advantech Panel Mount Monitor IDS-3200 series features a rugged metal front frame design. This series supports front and VESA mounting for diverse applications.

Key Features



6.5"~21.5"



Resistive/PCAP touchscreen



VESA mount
75 x 75 &
100 x 100 mm

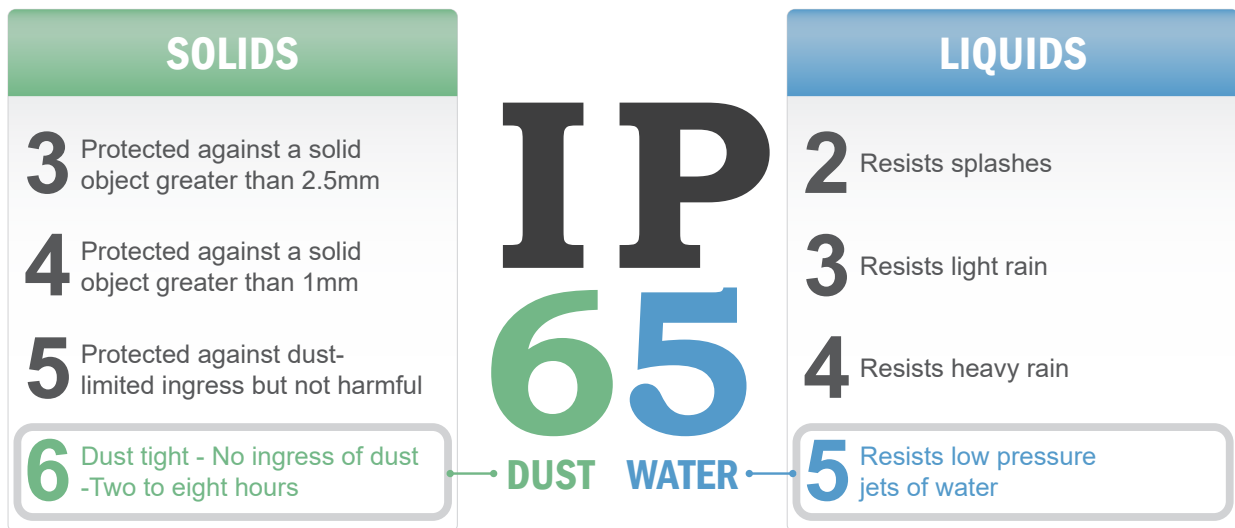


Rugged front frame



Industrial IP65 Monitors

IP65 water and dust proof designs can eliminate downtime in harsh environments by preventing the ingress of particulates and moisture/water. The IP65 rated industrial grade monitor can enable access to production equipment and machines without issues caused by dust and water. An IP rating is defined by two numbers: the first number represents protection from solid objects or materials, and the second represents protection from liquids.



IDS-3300 IP65 Monitors

Advantech IDS-3300 touch screen monitors are designed with an IP65 rated ruggedized front metal frame. They support IP65 water and dust resistance and maintain a compact and narrow bezel design. Our solutions include a full-range of touchscreens including Resistive touch, PCAP touch, and protective glass.

Key Features



15", 19"



IP65 rated front frame



PCAP/resistive/
non-touch options



Front/VESA
mount



VGA/DVI/
HDMI
interface



Industrial Full-flat Monitors

Advantech provides 100% flat glass front touch monitors suitable for myriad applications including medical and point-of-sale/information solutions. These flat monitors' feature a metal chassis which enables easy cleaning and maintenance, and provides a rugged and stable platform for diverse applications.

IDP31 Proflat Monitors

IDP31 ProFlat bezel-less industrial touch monitors feature a 100% flat, IP-rated front screen for easy maintenance and are equipped with a projected capacitive touch screen that supports up to 10 points.

Key Features



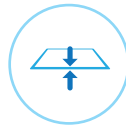
10.1", 15",
15.6", 21.5"



Multi-touch



Audio solution



Bezel-less
design



VGA/DVI/HDMI
interface



IDP31 Proflat Monitors with LED Strip Lights

Advantech's IDP31 LED Series monitors feature lighting around their edge and a flat surface design. They provide diverse I/O, support variable signals (VGA, DVI, and DP), and come in two models — PCAP touch and glass screen. These attributes make the IDP31 LED Series monitors an excellent choice for the gaming and retail markets.

Key Features



23.8", 27"



Multi-touch



VGA/DVI/DP
interface



LED lighting
surrounding



Bezel-less
design



Digital Signage Solutions

Advantech provides a standalone plug-and-play display for digital signage solutions. This signage display enables professional-grade image quality with optional interactive touch. It supports resolutions ranging from Full HD to 4K UHD. To fulfill the multiple connection requests of signage systems, it supports signal interfaces for HDMI, Display Port, and SDM interface.

DSD-3000/7000 Signage Monitors

Advantech signage display DSD-3000 series supports wide format Full HD high resolution. The DSD-7000 series utilizes SDM interfaces to sustain signage system connections.

Key Features



32"~55"



Super wide ratio of 16:9



High resolution



Portrait/landscape mode



Multiple signal interface



DSD-5000 Stretched Monitors

DSD-5000 series provides 28" & 38" inch with 16:3 and 32:9 super wide screen ratio suitable for transportation and advertisement application.

Key Features



28" & 38"



Super wide ratio of 16:3



RS232 remote control



Multiple I/O

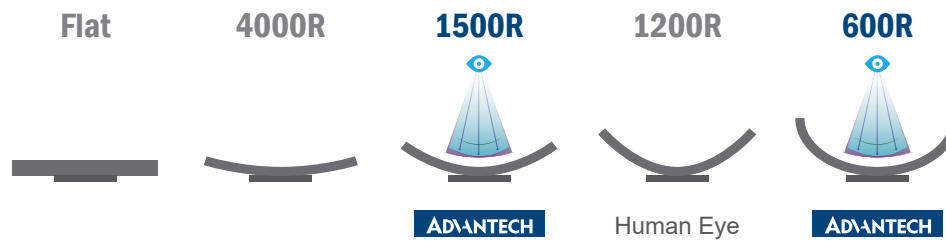


Audio solution



Curved Multi-touch Displays

This range of shaped monitors heralds the arrival of bold and daring designs for industrial displays. Available in C or J styles, the curved display series is built with a durable industrial grade standard. They use long life parts and tempered vandal proof glass. The fully flush finish makes the units easier to clean.

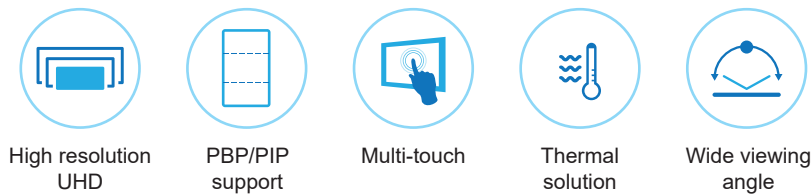


Curved Multi-touch Displays

CRV C/J type Curved Touch Monitors

Advantech J-shaped curved displays feature a curvature 1500R, but can be customized to different radius (eg. 1200R). The curved design from 1/2 height delivers an ideal and immersive display experience. Advantech's C-shaped curve displays are available in sizes 13", 27", 43" and 55". These displays come in different radius (R1500, R1200 and R600) to improve end user viewing experiences.

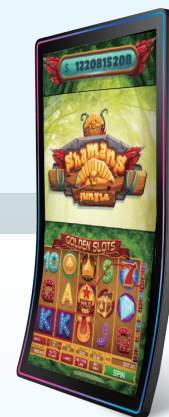
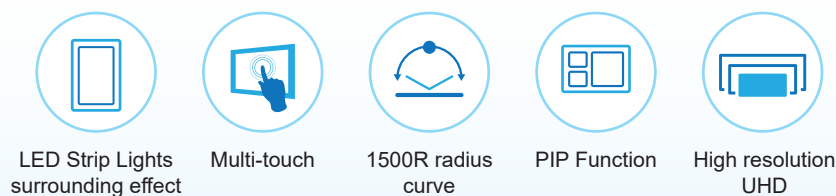
Key Features



CRV C/J type Curved Touch Monitors with LED Strip Lights

Advantech C-and J-shaped curved displays with curvature radius of 1500R are available 43" form factors. They are excellent choice for creating a unique slot machine features.

Key Features



Application Stories

Smart Parking



The off-street parking solutions provide parking patrons with an innovative, intuitive parking experience. The parking kiosk will include a touch display solution that eases user operation.

Solution

Advantech's IDK-1110WP is a 10.1 in 1000nits ultra high-brightness touch panel kit that delivers excellent visibility performance in direct sunlight. The touch panel kit features a PCAP solution via optical bonding that supports responsive operation and avoids reflection.

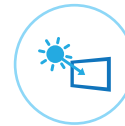
Solution Highlights



IDK-1110W
series



Optical
bonding



High
brightness

Automation



Palletizing robots handle mixed pallets with products of various sizes and shapes. As long as the arrangement of products on the pallet is secure during transit, a robot can complete specific palletizing tasks.

Solution

Advantech's IDK-1112 is a 12.1 in panel with 500nits brightness that delivers excellent display performance when used in indoor environments. IDK-1112 is integrated with a PCAP touch solution that supports gloved operation within factories. Advantech also supplies an AD board kit that supports HDMI interfaces for ease integration and operation.

Solution Highlights



IDK-1112
series



Multi-touch



Bezel-less

Medical Testing Equipment



Delivering highly accurate test results is a key to improving efficiency in Covid-19 PCR testing. Advantech's customer is a molecular diagnostics (MDx) platform builder that supports PCR testing technology. Their platform includes a touch display for easy operation by medical professionals wearing rubber gloves.

Solution

Advantech's IDK-1115WP is a 15.6 in wide ratio panel. It features a FHD 1920x1080 high-resolution, 450nits brightness display that delivers excellent performance. This panel leverages a PCAP touch solution that supports gloved operation in laboratories.

Solution Highlights



IDK-1115WP series



Optical bonding



Multi-touch

Gaming



Advantech's customer produces a player-popular, sleek, slim 43" curved screen cabinet. The cabinet includes a 43" curved touch monitor with ultra HD high resolution, and PCAP touchscreen as well as dramatic frame lights with enhanced game-contextual lighting capabilities. It offers a truly immersive gaming experience.

Solution

Advantech's CRV-430WP series is a 43" curved touch monitor with R1500 curve ratio that leaves a lasting impression. This touch-monitor features an UHD 3840x2160 high-resolution PCAP touchscreen that delivers excellent visibility and 450nits brightness and support for 10 multi-touch. Its 4 mm thick screen prevents damage from vandals and supports versatile signal interfaces — including HDMI 1.4, HDMI 2.0, and DisplayPort.

Solution Highlights



CRV-430WP series



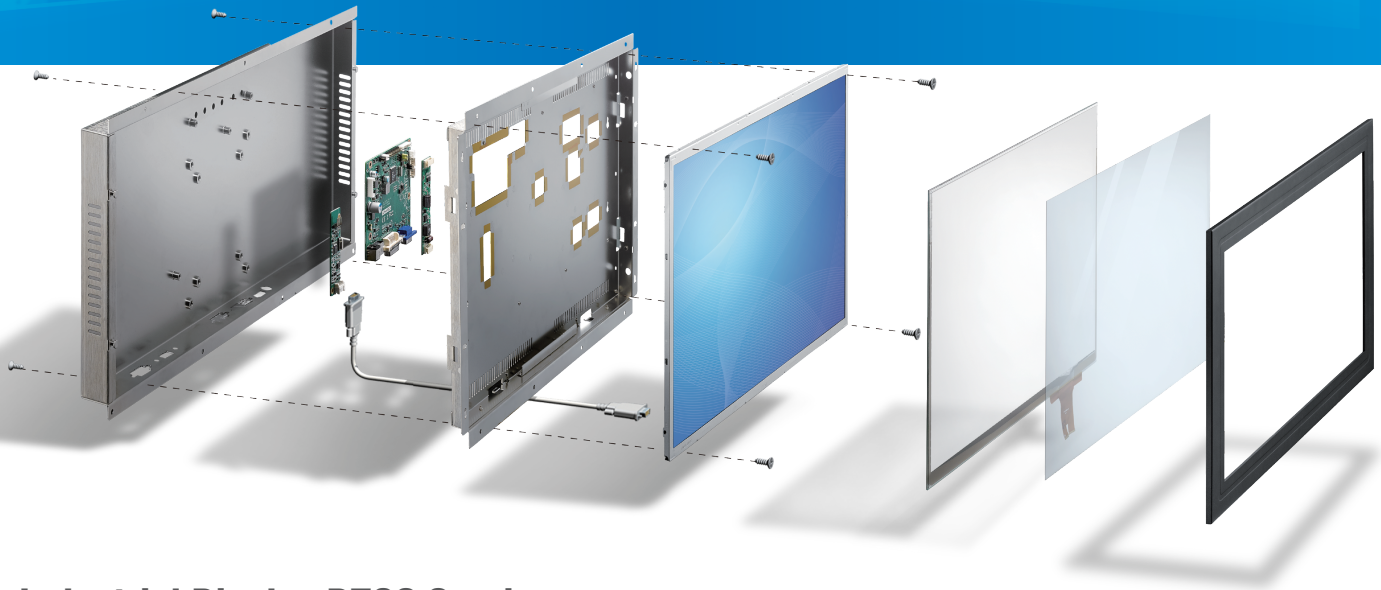
Curved touch monitor



P-cap touch

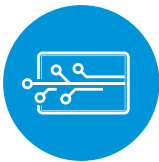
Design-to-order Services

Advantech provides DTOS service to design and manufacture displays tailored to your unique demands. Our design teams are located close to our customers in order to efficiently translate OEM requirements into cost effective, cleverly engineered solutions for all manner of environments.



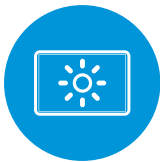
Industrial Display DTOS Services

Full Customization, Tailor-made



Electronics and Software

- Compatible signal cable set
- A/D card design
- DICOM for medical applications
- Data collection at point of display



Optical Enhancements

- High brightness up to 2,000 cd/m²
- Optical bonding
- Anti-reflective coating
- Privacy and polarizing filters



Mechanical Design

- Aluminum/ steel/ stainless chassis
- Open, closed frame, proflat designs
- Panel cutting
- Optional IP54/ IP65 solutions



Touch and Integration

- All touch technologies
- Decal printing
- Vandal proof solutions
- Multi-touch & gesture control

Key Applications

Our teams develop hundreds of new designs each year and are veterans of many demanding applications such as:



Medical Testing

- Expansive Viewing
- Excellent Noise Immunity
- Anti-fingerprint Coating



Automation

- PCAP touch supports multi touch
- IP65 front panel
- Panel mount integration



Kiosk

- Bezel-less design
- Versatile signal DVI/HDMI
- Open frame integration



Gaming

- High resolution FHD/UHD
- P-cap touch for multi touch
- Curved display

DeviceOn/Display

Advantech's DeviceOn/Display software utility delivers remote monitoring, status visualization, and real-time management to individual display devices. DeviceOn/Display can support display function adjustment via central control or handheld devices. The operating status can be monitored with problems recorded on a server daily. This solution eases management control and saves time.

Functions Highlights



On Screen Display Control

- Brightness adjustment
- Color temperature



Touch Function Settings

- Touch function enable/disable
- Remote touch calibration
- Remote touch debug



Remote Monitoring

- Backlight lifetime monitoring

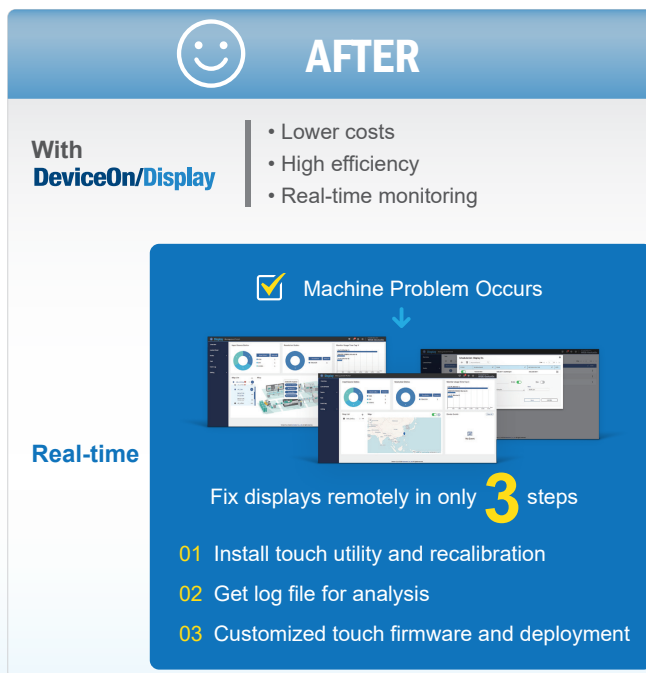
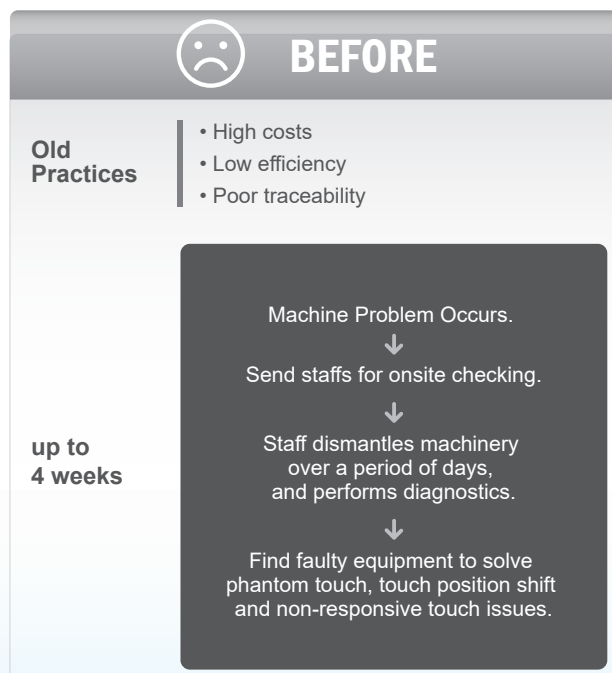


Remote Task Management

- Grouping settings
- Power-on timer settings

Advantages of using Advantech DeviceOn/Display

DeviceOn/Display is the cutting-edge remote display management software that boosts display performance, enables customization, and reduces workplace hazards.



Selection Guide



IDK-1000 Indoor LCD Kits

	IDK-1105	IDK-065	IDK-1107W			IDK-1108	IDK-1110W		IDK-1110		
Size	5.7"	6.5"	7"			8.4"	10.1"		10.4"		
Resolution	640 x 480 (VGA)	640 x 480 (VGA)	800 x 480 (WVGA)	1024 x 600 (WVGA)	1024 x 600 (WSVGA)	800 x 600 (SVGA)	1024 x 600 (WSVGA)	1280 x 800 (WXGA)	800 x 600 (SVGA)	1024 x 768 (XGA)	1024 x 768 (XGA)
Brightness (cd/m2)	500	800	500	500	500	450	500	500	400	500	500
Viewing Angle (H/V°)	140/100	160/140	178/178	178/178	140/150	160/140	140/120	170/170	160/130	176/176	176/176
Contrast Ratio	250:1	600:1	800:1	800:1	700:1	600:1	500:1	800:1	700:1	1000:1	1000:1
Touchscreen	4-Wire Resistive	4-Wire Resistive	4-Wire Resistive	P-cap	4-Wire Resistive	4-Wire Resistive	4-Wire Resistive	P-cap	4-Wire Resistive	4-Wire Resistive	P-cap
Signal Interface	LVDS	LVDS	LVDS	LVDS	LVDS	LVDS	LVDS	LVDS	LVDS	LVDS	LVDS
Backlight Life (hrs)	30,000	50,000	50,000	50,000	50,000	50,000	50,000	50,000	50,000	50,000	50,000
Durability (touches)	1 million	1 million	1 million	50 million ~	1 million	1 million	1 million	50 million ~	1 million	1 million	50 million ~
Operating Temperature	-20 ~ 70°C	-10 ~ 60°C	-5 ~ 60°C	-20 ~ 70°C	-20 ~ 70°C	-10 ~ 60°C	-5 ~ 60°C	-20 ~ 65°C	-10 ~ 60°C	-10 ~ 60°C	-20 ~ 70°C

	IDK-1112		IDK-1115	IDK-1115WP		IDK-1119	IDK-1121W	
Size	12.1"		15"	15.6"		19"	21.5"	
Resolution	800 x 600 (SVGA)	1024 x 768 (XGA)	1024 x 768 (XGA)	1366 x 768	1920 x 1080 (FHD)	1280 x 1024 (SXGA)	1920 x 1080 (FHD)	1920 x 1080 (FHD)
Brightness (cd/m2)	450	500	500	500	450	350	300	250
Viewing Angle (H/V°)	160/140	178/178	178/178	160/150	170/170	170/160	178/178	178/178
Contrast Ratio	700:1	1000:1	2500:1	600:1	800:1	1000:1	5000:1	1000:1
Touchscreen	5-Wire Resistive	5-Wire Resistive and P-cap	5-Wire Resistive and P-cap	P-cap	P-cap	5-Wire Resistive	5-Wire Resistive	P-cap
Signal Interface	LVDS	LVDS	LVDS	LVDS	2 Channel LVDS	2 Channel LVDS	2 Channel LVDS	2 Channel LVDS
Backlight Life (hrs)	50,000	30,000	70,000	50,000	50,000	50,000	50,000	30,000
Durability (touches)	10 million	10 / 50 million ~	10 / 50 million ~	50 million ~	50 million ~	10 million	10 million	50 million ~
Operating Temperature	-20 ~ 70°C	-20 ~ 70°C	-20 ~ 70°C	-10 ~ 70°C	-20 ~ 70°C	0 ~ 50°C	0 ~ 60°C	0 ~ 50°C



IDK-2000 Outdoor LCD Kits

	IDK-2108	IDK-2110		IDK-2112		IDK-2115	IDK-2117	IDK-2119	IDK-2121
Size	8.4"	10.4"		12.1"		15"	17"	19"	21.5"
Resolution	800 x 600 (SVGA)	800 x 600 (SVGA)	1024 x 768 (XGA)	800 x 600 (SVGA)	1024 x 768 (XGA)	1024 x 768 (XGA)	1280 x 1024 (SXGA)	1280 x 1024 (SXGA)	1920 x 1080 (FHD)
Brightness (cd/m2)	1200	1200	1200	1200	1200	1200	1200	1200	1200
Viewing Angle (H/V°)	160/140	160/130	170/170	160/140	178/178	178/178	170/160	170/160	178/178
Contrast Ratio	600:1	500:1	700:1	700:1	1000:1	2500:1	1000:1	1000:1	5000:1
Touchscreen	4-Wire Resistive	4-Wire Resistive	4-Wire Resistive	5-Wire Resistive	P-CAP	5-Wire Resistive	5-Wire Resistive	5-Wire Resistive	5-Wire Resistive
Signal Interface	LVDS	LVDS	LVDS	LVDS	LVDS	LVDS	2 Channel LVDS	2 Channel LVDS	2 Channel LVDS
Backlight Life (hrs)	50,000	50,000	70,000	50,000	50,000	50,000	50,000	50,000	50,000
Durability (touches)	1 million	1 million	1 million	10 million	50 million ~	10 million	10 million	10 million	10 million
Operating Temperature	-20 ~ 70°C	-10 ~ 60°C	-10 ~ 60°C	-20 ~ 70°C	-20 ~ 70°C	-20 ~ 70°C	0 ~ 55°C	0 ~ 55°C	0 ~ 55°C



IDS-3100/3200 Slim Open Frame/Panel Mount Monitors

	IDS-3106/ IDS-3206	IDS-3110/ IDS-3210	IDS-3112/ IDS-3212	IDS-3115/ IDS-3215	IDS-3117/ IDS-3217	IDS-3118W/ IDS-3218W	IDS-3119/ IDS-3219	IDS-3121W/ IDS-3221	IDS-3127W
Size	6.5"	10.4"	12.1"	15"	17"	18.5"	19"	21.5"	27"
Resolution	640 x 480, VGA	800 x 600, SVGA and 1024 x 768, XGA	800 x 600, SVGA and 1024 x 768, XGA	1024 x 768, XGA	1280 x 1024, SXGA	1366 x 768, HD	1280 x 1024, SXGA	1920 x 1080, FHD	1920 x 1080, FHD
Brightness(cd/m2)	800	400/500	450/600	400/500	350	300	350	250	300
Viewing Angle(H/V°)	160/140	160/140	160/140	160/140	170/160	170/160	170/160	178/178	178/178
Contrast Ratio	600 : 1	700 : 1	700 : 1	700 : 1	800 : 1	1000:1	1000:1	1000:1	3000:1
Touchscreen	4-Wire Resistive	5-wire resistive and P-cap	5-wire resistive and P-cap	5-wire resistive and P-cap	5-Wire Resistive	5-wire resistive and P-cap	5-wire resistive and P-cap	5-wire resistive and P-cap	Glass and p-cap
Backlight Life (hrs)	50,000	50,000	50,000	50,000	50,000	50,000	50,000	50,000	50,000
Durability	1 million touches	10/50 million touches	10/50 million touches	10/50 million touches	10 million touches	10/50 million touches	10/50 million touches	10/50 million touches	50 million touches
Operating Temperature	0 ~ 50°C	- 20 ~ 60°C	- 20 ~ 60°C	- 20 ~ 60°C	- 20 ~ 60°C	0 ~ 55°C	0 ~ 45°C	0 ~ 45°C	0 ~ 45°C
I/O Ports	VGA x 1; DVI x 1; 12 VDC Jack x 1; USB x 1	VGA x 1; DVI x 1; HDMI x 1 (selected models); 12 VDC Jack x 1; USB x 1; RS-232 x 1							VGA x 1; DVI x 1; DP x 1; 12 VDC Jack x 1; USB x 1
OSD	Keys: Power on/off, Menu/Enter, Left/Up, Right/Down, Exit/Auto, Source Menu Functions: Brightness, Contrast, Screen Setting, Color Temp, OSD Language, VGA/DVI, Reset, Auto Adjust								

Selection Guide



IDS-3300 IP65 Monitors

	IDS-3315	IDS-3319
Size	15"	19"
Resolution	1024 x 768, XGA	1280 x 1024, SXGA
Brightness (cd/m2)	500 / 1200	350
Viewing Angle (H/V°)	160/140	170/160
Contrast Ratio	2500:1	1000:1
Touchscreen	5-Wire Resistive and PCAP	5-Wire Resistive and PCAP
Backlight Life (hrs)	50,000	50,000
Durability	10/50 million touches	10/50 million touches
Operating Temperature	- 20 ~ 60°C	0 ~ 45°C
I/O Ports	VGA x 1; DVI x 1; HDMI x 1 12VDC Jack x 1; USB x 1; RS-232 x 1	
OSD	Keys: Power on/off, Menu/Enter, Left/Up, Right/Down, Exit/Auto, Source Menu Functions: Brightness, Contrast, Screen Setting, Color Temp, OSD Language, VGA/DVI, Reset, Auto Adjust	

IDP31 Proflat Monitors

	IDP31-150	IDP31-101W	IDP31-156W	IDP31-156WP	IDP31-215W	IDP31-215WP
Size	15"	10.1"	15.6"	15.6"	21.5"	21.5"
Resolution	1024 x 768, SVGA	1280 x 800, WXGA	1920 x 1080, FHD	1366 x 768, HD	1920 x 1080, FHD	1920 x 1080, FHD
Brightness(cd/m2)	500 cd/m2	500 cd/m2	450 cd/m2	500 cd/m2	250 cd/m2	250 cd/m2
Viewing Angle (H/V°)	176/176	170/170	170/170	160/150	178/178	178/178
Contrast Ratio	2500:1	800:1	800:1	600:1	1000:1	1000:1
Touchscreen	Projective Capacitive Touch	Projective Capacitive Touch	Projective Capacitive Touch	Projective Capacitive Touch	Projective Capacitive Touch	Projective Capacitive Touch
I/O Ports	HDMI x 1; VGA x 1; DVI-D x 1 Audio x 1 (audio output 3W) 12 VDC Jack x 1; USB x 1	HDMI 12 VDC Jack x 1; USB x 1	HDMI x 1; VGA x 1; DVI-D x 1 Audio x 1 (audio output 3W) 12 VDC Jack x 1; USB x 1	HDMI 12 VDC Jack x 1; USB x 1	HDMI x 1; VGA x 1; DVI-D x 1 Audio x 1 (audio output 3W) 12 VDC Jack x 1; USB x 1	HDMI 12 VDC Jack x 1; USB x 1
Surface Hardness	6H	7H	6H	7H	6H	7H
Backlight Life (hrs)	50,000	50,000	50,000	50,000	30,000	50,000
Operating Temperature	20 ~ 60°C	20 ~ 65°C	20 ~ 60°C	-10 ~ 55°C	0 ~ 45°C	0 ~ 60°C
Certification	CE, FCC, CCC	CE, FCC, CCC	CE, FCC, CCC	CE, FCC, CCC	CE, FCC, CCC	CE, FCC, CCC



IDP31 with LED Strip Lights

	IDP31-238W	IDP31-270W
Size	23.8"	27"
Resolution	1920 x 1080, FHD	1920 x 1080, FHD
Brightness(cd/m2)	350 cd/m2	300 cd/m2
Viewing Angle (H/V°)	178/178	178/178
Contrast Ratio	1000:1	3000:1
Touchscreen	Glass and P-cap	Glass and P-cap
I/O Ports	VGA x 1; DVI x 1; DP x 1; 12 VDC Jack x 1; USB x 1	VGA x 1; DVI x 1; DP x 1; 12 VDC Jack x 1; USB x 1
Surface Hardness	6H	6H
Backlight Life (hrs)	30,000	30,000
Operating Temperature	0 ~ 45°C	0 ~ 45°C
Certification	CE, FCC, CCC	CE, FCC, CCC



DSD-3000/7000 Signage Monitors

	DSD-3032	DSD-3042	DSD-3055	DSD-7000
Size	32"	42"	55"	55"
Resolution	1920 x 1080(FHD)	1920 x 1080(FHD)	1920 x 1080(FHD)	1920 x 1080(FHD)
Brightness (cd/m2)	350	500	450	500
Viewing Angle (H/V°)	178/178	178/178	178/178	178/178
Contrast Ratio	3000:1	4000:1	4000:1	4000:1
Touchscreen	Optical Touch	Optical Touch	Optical Touch	—
Signal Interface	HDMI/VGA/ DisplayPort	HDMI/VGA/ DisplayPort	HDMI/VGA/ DisplayPort	HDMI/VGA/DisplayPort/SDM slot
Backlight Life (hrs)	50,000	50,000	50,000	50,000
Durability	10 million touches	10 million touches	10 million touches	-
Operating Temperature	5 ~ 45°C	5 ~ 45°C	5 ~ 45°C	0 ~ 40°C



DSD-5000 Stretched Monitors



	DSD-5028	DSD-5038
Size	28"	38"
Resolution	1920 x 360	1920 x 538
Brightness (cd/m2)	700	800
Viewing Angle (H/V°)	178/178	176/176
Contrast Ratio	1200:1	4000:1
Touchscreen	N/A	N/A
Signal Interface	VGA/DVI/HDMI	VGA/DVI
Backlight Life (hrs)	50,000	50,000
Durability	N/A	N/A
Operating Temperature	0 ~ 45°C	0 ~ 45°C



CRV Curved Touch Monitors

	CRV-430WP
Size	43" C type
Resolution	3840 x 2160 UHD
Brightness (cd/m2)	450
Contrast Ratio	1100:1 (8ms)
Curved Radius	1500
Touchscreen	Multi-touch PCT(10 touches)
Cover Glass	4mm
Operating Temperature	0 ~ 50°C
I/O Ports	HDMI 1.4 (2 ports), HDMI 2.0 (2 ports), DisplayPort, VGA,USB



CRV Curved Touch Monitors with LED Strip Lights

	CRV-430JP
Size	J type
Resolution	3840 x 2160 UHD
Brightness (cd/m2)	450
Contrast Ratio	1100:1 (8ms)
Curved Radius	1500
Touchscreen	Multi-touch PCT(10 touches)
Cover Glass	4mm
Operating Temperature	0 ~ 50°C
I/O Ports	HDMI 1.4 (2 ports), HDMI 2.0 (2 ports), DisplayPort, VGA,USB

Your Industrial Displays Expert



Industrial Grade and Quality

Advantech provides display solutions for industrial applications requiring greater durability and quality.



Extended Longevity and Warranty

Advantech offers a 2 year product warranty. An extended warranty between 3 years is also available.



Global Capacity and Local Service

Advantech delivers display solutions globally with three manufacturing centers in Taiwan, China, Netherlands, and USA as well as branch offices in 23 countries.

Regional Service & Customization Centers

China	Kunshan 86-512-5777-5666	Taiwan	Taipei 886-2-2792-7818	Netherlands	Eindhoven 31-40-267-7000	Poland	Warsaw 00800-2426-8080	USA	Milpitas, CA 1-408-519-3898
--------------	-----------------------------	---------------	---------------------------	--------------------	-----------------------------	---------------	---------------------------	------------	--------------------------------

Worldwide Offices

Asia Pacific

Taiwan

Toll Free	0800-777-111
Taipei & IoT Campus	886-2-2792-7818
Taichung	886-4-2372-5058
Kaohsiung	886-7-392-3600

China

Toll Free	800-810-0345
Beijing	86-10-6298-4346
Shanghai	86-21-3632-1616
Shenzhen	86-755-8212-4222
Chengdu	86-28-8545-0198
Hong Kong	852-2720-5118

Asia Pacific

Japan

Toll Free	0800-500-1055
Tokyo	81-3-6802-1021
Osaka	81-6-6267-1887
Nagoya	81-0800-500-1055
Nogata	81-949-22-2890

Korea

Toll Free	080-363-9494/5
Seoul	82-2-3660-9255

Singapore

Singapore	65-6442-1000
-----------	--------------

Malaysia

Kuala Lumpur	60-3-7725-4188
Penang	60-4-537-9188

Thailand

Bangkok	66-02-2488306-9
---------	-----------------

Vietnam

Hanoi	84-24-3399-1155
Hochiminh	84-28-3836-5856

Indonesia

Jakarta	62-21-751-1939
---------	----------------

Australia

Toll Free	1300-308-531
Melbourne	61-3-9797-0100

India

Bangalore	91-94-4839-7300
Pune	91-94-2260-2349

Europe

Netherlands

Eindhoven	31-40-267-7000
Breda	31-76-523-3100

Germany

Toll Free	00800-2426-8080/81
Munich	49-89-12599-0
Düsseldorf	49-2103-97-855-0

France

Paris	33-1-4119-4666
-------	----------------

Italy

Milan	39-02-9544-961
-------	----------------

UK

Newcastle	44-0-191-262-4844
London	44-0-870-493-1433

Spain

Madrid	34-91-668-86-76
--------	-----------------

Sweden

Stockholm	46-0-864-60-500
-----------	-----------------

Poland

Warsaw	48-22-31-51-100
--------	-----------------

Russia

Moscow	8-800-555-01-50
St. Petersburg	8-812-332-57-27
	8-921-575-13-59

Czech Republic

Ústí nad Orlicí	420-465-524-421
-----------------	-----------------

Ireland

Galway	353-91-792444
--------	---------------

Americas

North America

Toll Free	1-888-576-9668
Cincinnati	1-513-742-8895
Milpitas	1-408-519-3898
Irvine	1-949-420-2500
Ottawa	1-815-433-5100
Chicago	1-888-576-9668
Boston	1-800-866-6008

Brazil

Toll Free	0800-770-5355
São Paulo	55-11-5592-5367

Mexico

Toll Free	1-800-467-2415
Mexico City	52-55-6275-2777
Guadalajara	52-33-3169-7670

Middle East and Africa

Israel	072-2410527
Turkey	90-212-222-0422
Turkey-Bursa	90-224-413-3134

ADVANTECH

Enabling an Intelligent Planet

www.advantech.com

Please verify specifications before ordering. This guide is intended for reference purposes only. All product specifications are subject to change without notice. No part of this publication may be reproduced in any form or by any means, electronic, photocopying, recording or otherwise, without prior written permission of the publisher. All brand and product names are trademarks or registered trademarks of their respective companies. © Advantech Co., Ltd. 2021

Visit Website



8600000574