

# Edge to Cloud Solutions

Simplify IoT Deployment, Data Visualization, and Remote Management

- ✓ Solution Diagram
- ✓ Software Integration
- ✓ Vertical Focus Market
- ✓ Application Stories



**ADVANTECH**

*Enabling an Intelligent Planet*

**intel. arm**



Microsoft

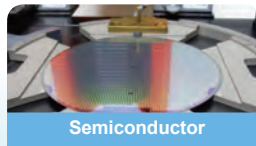
**CANONICAL**

# Simplify IoT Deployment from Edge to Cloud

Advantech Edge to Cloud solutions facilitate IoT connectivity, light edge analytics, and cloud integration — thus simplifying IoT application deployment, visualization, and remote management. These provide an all-in-one solution packages in hardware and software integration and accommodate in-equipment connectivity, smart factory, semiconductor equipment, smart city, back-end server, and other AIoT applications.



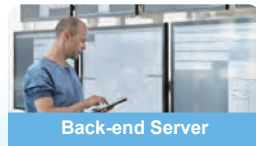
Smart Factory



Semiconductor



Smart City



Back-end Server



Edge Cloud

## DeviceOn/iEdge

Protocol Integration Services

Real-time Edge Analytics

Edge Intelligence Systems

Auto Generated Dashboard

Centralized Remote Management

EDGE X FOUNDRY

Modbus

OPC UA

ODBC



Controllers



IoT Devices



Sensors



Motors



Workstations



Robots



CNC Machines

All solutions come pre-integrated with DeviceOn/iEdge software. This provides communication protocols, data integration, real-time computing and edge analytics, remote monitoring, and centralized management via a pre-installed dashboard UI. Indeed, this ready-to-use solution helps save time and development costs.

### Data Integration

- Supports industrial protocol OPC-UA/Modbus/ODBC
- Protocol plug-in SDK

## DeviceOn/iEdge



### Centralized Remote Management

- Remote management tool OTA/KVM
- Edge configuration settings and deployment

### Real-time Edge Analytics

- Edge data pre-processing and analysis
- Event driven rule-engine

### Auto Generated Dashboard

- Multiple built-in templates
- Edge dashboard for local operators



### Data Visualization

Multiple built-in templates help users create dashboards for device monitoring



### Edge Intelligence

Flexible data flow and edge data analysis for operation optimization and quality control



### Event Notification

Real-time edge alerts and rule reaction enables device predictive maintenance

# Edge Cloud Solution

Advantech's Edge Cloud Solution provides hardware and software integrated packages with high scalability and come pre-integrated with support for both Linux-based Kubernetes and Windows Server environments. In addition, they help with microservice deployment and management and also support a hybrid-cloud structure for connecting to public clouds like Azure or AWS and private clouds.

Microsoft Azure  
aws Alibaba Cloud  
**WISE-PaaS**  
kubernetes  
**EIS-S232/EIS-S230**

Device Status Management  
Computing Resource Management  
Operation Management

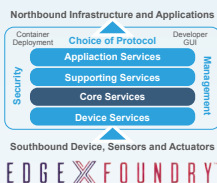
## Software Stack Package

Platform Management	Operation Management	Applications Development
<b>Database Management</b>  PostgreSQL mongoDB	<b>WISE-DeviceOn</b> <b>Device Management</b> • Automatic device registration • One-key to dashboard • Device security	<b>Data Visualization</b>  Grafana
<b>Backend Management</b>  K8S ceph Prometheus	<b>Monitoring &amp; Control</b> • Real-time operations • Power on/off • Remote control	<b>Applications Management</b>  APP Docker HCR
<b>Message Broker</b>  RabbitMQ	<b>Update Management</b> • Batch provisioning • Firmware updates • Software updates	<b>Machine Learning</b> 

# Edge Intelligence Solution

Advantech Edge Intelligence Systems provide a wide variety of IoT software solutions. These range between IoT devices operation management software and a domain-focused application industrial apps designed to help users build, manage, and deploy applications.

## Sensing Device Connection & Data Acquisition



- Neutral and open platform
- Heterogeneous device connection
- Application integration and data analytics

## Device Remote Operation Management



### WISE-DeviceOn

- Real time monitoring & control
- McAfee security & protection
- Acroins backup & recovery

## Data Integration & Edge Management



- Support OPC-UA/Modbus/ODBC
- Real-time edge data pre-processing
- Centralized dashboard operation mgmt.

## SECS/GEM Data Conversion



- SEMI equipment communications standard
- Data convert to SECS/GEM protocol
- Built-in GEM300 library in SECS driver

## PLC Integration & Equipment Connectivity



- Supports 450+ PLC drivers
- Lightweight PLC runtime application
- Unlimited free trial tags for connectivity

## Vibration Data Monitoring & Analysis



- Real-Time vibration monitoring
- Time-Frequency vibration data analysis
- Alarm management and maintenance

**EIS-D620**  
RISC-Based Solution

**EIS-D210**  
Device Connectivity Solution

**EI-52**  
Compact High-performance Solution

Entry

High Performance

# Vertical Focus and Application Stories

## Smart Factory



IIoT technology delivers real-time management and operational efficiency to automated devices and machines. Advantech provides edge to cloud solution with DeviceOn/iEdge data integration and edge management industrial App built-in and helps you launch your intelligent automation project quickly.

- ✓ Seamless Equipment Data Integration(OPC-UA/ Modbus/ ODBC)
- ✓ Supports 450+ PLC drivers for equipment connectivity
- ✓ Ensure remote access, monitoring, and security



## Semiconductor Equipment



In order to remain competitive, the semiconductor industry needs to keep pace with advanced processes and adopt smart manufacturing that boosts productivity and efficiency. Advantech provides iEdge/SEMI software and solution ready packages that address complicated production line problems and improve industry competitiveness.

- ✓ Collect equipment data and convert to SECS/GEM protocol for overall management
- ✓ Centralized equipment management and database supports operation stability
- ✓ Protects against unexpected equipment shutdown and conduct predictive maintenance



## Smart City



Smart City applications often necessitate the deployment of multiple devices over a wide area. Advantech provides a range of sensing-edge-cloud solutions with EdgeX support, wireless IoT connectivity, and DeviceOn remote management to accelerate application deployment.

- ✓ Supports heterogeneous device connection and communication protocols
- ✓ Ensures facility remote access and real-time management
- ✓ 5G/Wi-Fi wireless connectivity and AI add-on computing



## Back-end Server



Integrating substantial IoT data and devices from various system platform creates major challenges for operation managers and IT personnel. Advantech private Edge Cloud Solution is integrated with Kubernetes(K8S) micro-services and multiple databases to accelerate cross-platform integration. You can quick start back-end IoT data services.

- ✓ Easy cross-platform integration with K8s microservice structure built-in
- ✓ Pre-integrated with Azure and AWS cloud services for big data analysis
- ✓ Pre-integrated dashboard delivers real-time centralized management



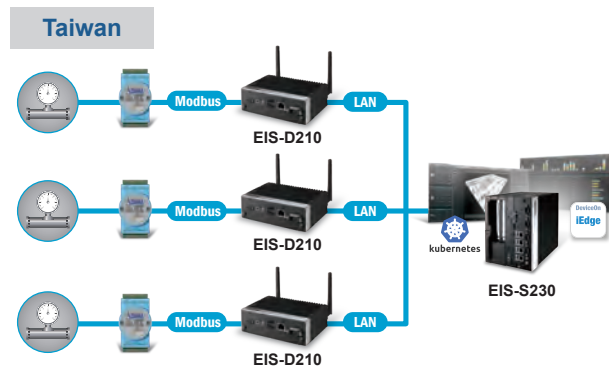
## Automatic Welding Machine Monitoring with Customer-centric Demand

- Eases machine data collection with edge-to-cloud integrated system
- Customer-centric dashboard builder with development tools — NodeRed and Grafana
- Fanless, rugged, and highly-expandable product designs



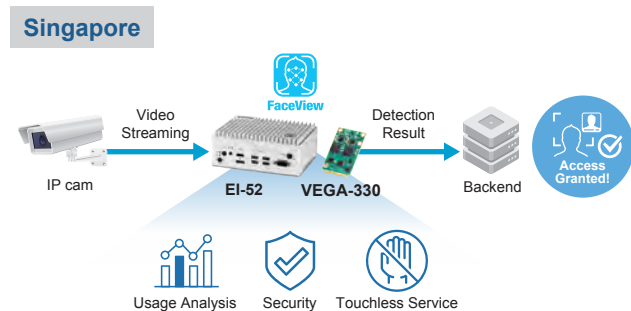
## Monitor Semiconductor Production Air Pressure in Real Time

- Digitalizes analog air pressure data for collection and visualization
- Enables real-time air pressure monitoring and prompt detection
- Reduces equipment downtime risks using immediate warning notifications while boosting production capacity and improving yield rates



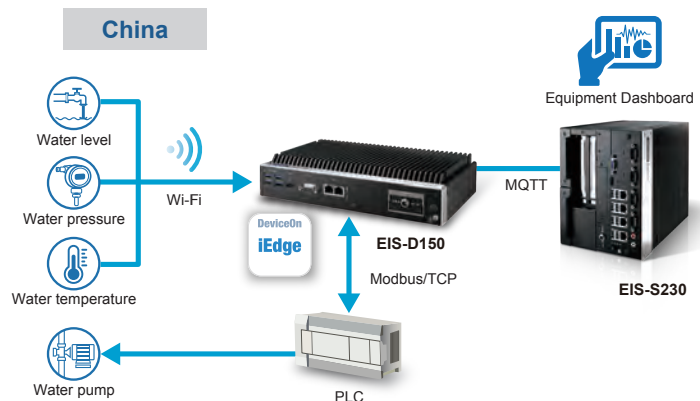
## Propel the Deployment of the Touchless AI Smart Access Control Systems

- Integrated high-precision facial recognition and multiple software development tools, help system integrators deploy solutions quickly
- Integrated VEGA AI module for applications that require additional AI computing power at the edge.
- Minimizes bandwidth usage and shortens system response times, ensuring system availability and timely alarm notifications in event of abnormal event



## Real-time Monitoring Water Circulation Systems

- Reduce human errors and increase efficiency via integrated monitoring system
- Supports multiple communication protocols, data collection, and dashboard visualization
- Real-time remote monitoring and control for equipment at the edge



# Product Selection

## Edge Intelligence System

**NEW**






Model Name	EIS-D620 Low Power	EIS-D210 Wireless Connectivity	EIS-D150 High Performance	EIS-D110 Ultra Compact	EI-52 Compact High Performance
CPU	Rockchip RK3399	Intel® Celeron® N3350	6 <sup>th</sup> Gen Intel® Core™ i5 6300U	Intel® Celeron® J1900	11 <sup>th</sup> Gen Intel® Core™ i5-1145G7E/Core i3-1115G4E/Celeron 6305E
RAM/Storage	2GB RAM/16GB eMMC built-in	4GB RAM/64GB SSD built-in	8GB RAM/256GB SSD built-in	Optional	8GB/16GB DDR4 RAM and 64GB SATA Slim SSD Built-in
OS	Debian	Win 10 IoT Enterprise	Win 10 IoT Enterprise	Optional	Win 10 IoT Enterprise
I/O Interface	2 x HDMI, 2 x GbE, 1 x RS-232, 1 x USB 3.0, 1 x USB 2.0	1 x VGA, 2 x GbE, 2 x RS232/422/485, 4 x USB 3.0, iDoor	1 x HDMI, 1 x VGA, 2 x GbE, 4 x RS232/422/485, iDoor	2 x HDMI, 2 x GbE, 1 x RS232/422/485	1 x HDMI, 1 x DP, 2 x GbE, 2 x RS232/422/485, 4 x USB 3.0, 2 x USB 2.0
Wireless Networking	Optional	CE RED/FCC RF Compliance	Optional		CE RED/FCC RF Compliance optional AIW-355 5G module optional EWM-W189H02E WIFI module
Dimensions (W x H x D)	135 x 130 x 29 mm; 5.3 x 5.1 x 1.1 in	133 x 46.4 x 94.2 mm; 5.2 x 1.82 x 3.7 in	260 x 54 x 140.2 mm; 10 x 2.12 x 5.5 in	133.8 x 43.1 x 94.2 mm; 5.26 x 1.69 x 3.7 in	156 x 112 x 60 mm; 6.1 x 4.4 x 2.3 in
Software Package	<b>DeviceOn/iEdge</b> <b>Data Integration and Edge Management</b> <ul style="list-style-type: none"> <li>Data Integration</li> <li>Centralized Remote Management</li> <li>Real-time Edge Analytics</li> <li>Auto Generated Dashboard</li> </ul> <b>Add-on Package:</b> <ul style="list-style-type: none"> <li>iEdgeSEMI for SECS/GEM protocol conversion</li> <li>iEdgePLC support over 450+ PLC protocol drivers</li> </ul>		<b>WebAccess/SCADA</b> <b>Smart SCADA</b> <ul style="list-style-type: none"> <li>Dashboard Editor Viewer</li> <li>Widget Library &amp; Widget Builder</li> <li>Cross Browser &amp; Device Viewing (For EIS-D150 and EIS-D210)</li> </ul>		<b>WISE-DeviceOn</b> <b>IoT Device Operation Management</b> <ul style="list-style-type: none"> <li>Device Management</li> <li>Monitoring &amp; Control</li> <li>Update Management</li> </ul> <b>EDGE X FOUNDRY™</b> <ul style="list-style-type: none"> <li>Heterogeneous Devices Connection</li> <li>Application Integration</li> <li>Data Analytics Neutral &amp; Open Platform</li> </ul>
Development Tools	Node-RED Data Flow Logic Designer & Dashboard Builder Protocol Plug-in SDK & Configuration Tools				Edge X API and SDK
Ordering Information	EIS-D620-D1DE121	EIS-D210W-E1DS642	EIS-D150-E1DS182	EIS-D110-01D0002	EI-52-S6A1 (i5), EI-52-S2A1 (i3), EI-52-U0A1 (Celeron)

## Edge Cloud Solutions

**NEW**



Model Name	EIS-S232 High-end Expansion	EIS-S230 High-end
CPU	Intel® 10th Gen. Xeon® W-1290TE	Intel® 7th Gen. Xeon® E3-1275 V6
RAM/Storage	32GB RAM/1TB SSD built-in	32GB RAM/512GB SSD built-in
OS	Ubuntu 20.04 (64bit)	Ubuntu 16.04 (64bit)
I/O Interface	1 x HDMI, 1 x VGA, 2 x GbEx2, 4 x USB 3.2, 4 x USB 3.0, 6 x COM, GPIO 16bit	1 x HDMI, 1 x VGA, 4 x GbE, 4 x RS-232/422/485, 8 x USB 3.0
Expansion	1 PCIe16, 2 PCI and iDoor	2 PCIe8
Wireless Networking	Optional	
Dimensions (W x H x D)	197 x 204 x 230 mm; 7.7 x 8.03 x 9 in	156 x 205 x 230 mm; 6.1 x 8 x 9 in
Software Package	<b>WISE-DeviceOn</b> <b>IoT Device Operation Management</b> <ul style="list-style-type: none"> <li>Device Management</li> <li>Monitoring &amp; Control</li> <li>Update Management</li> </ul>    <b>Platform Management</b> <ul style="list-style-type: none"> <li>Docker, Kubernetes</li> <li>RabbitMQ, MongoDB</li> <li>PostgreSQL, Grafana</li> </ul>	
Development Tools	Kubernetes DeKvelopment Kit	
Ordering Information	EIS-S232-U20STB1	EIS-S230-U20S01

# Solution Ready Package

## FAB Environment Monitoring



## Process Equipment Management



## Equipment Health Monitoring



### Solution Offerings



#### SECS/GEM Protocol Conversion

- Collect equipment data and convert them to SECS/GEM protocol for IT/OT integration
- Secure equipment shutdown with automated notification center



SEMI Equipment Communications Standard



Data convert to SECS/GEM protocol

#### GEM300

Built-in GEM300 library via SECS driver



Includes edge database and dashboard

#### Ordering Information

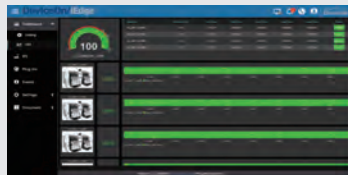
**IEDGE-SEMI-21A**

- 1 x EI-52-S6A1 (Intel® Core™ i5-1145G7E, w/16G RAM,64G SSD)
- 1 x 20706WX9VM0024 Win10 image w/ iEdgeSEMI for EI-52
- 1 x 31ASE2ISEC0301 iEdgeSEMI License
- 1 x 36WSWPE21001A1 DeviceOn/iEdge Client Bundle License 1 device



#### PLC Equipment Management

- Supports Mitsubishi, Omron, and Simens PLC protocols
- Centralized equipment management with user friendly dashboard



450+ PLC driver support



Lightweight PLC runtime application



Unlimited free trial tags for PLC connectivity



Easy implementation and deployment

#### Ordering Information

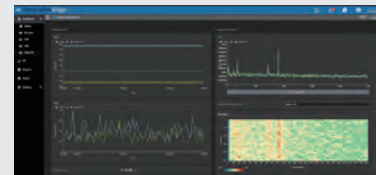
**IEDGE-PLC-21A**

- 1 x EIS-D210 (Intel® Celeron® N3350/4GB RAM/64GB SSD/Win10)
- Win10 image w/ iEdgePLC for EIS-D210
- 1 x 36WSWPE21001A1 DeviceOn/iEdge Client Bundle License 1 device
- iEdgePLC trial version



#### Vibration Data Monitoring

- Monitor rotating equipment in real time by converting sensor data to RMS/FFT/Spectrogram
- Model normal status monitoring, discover problems early, and avoid costly downtime



Real-time vibration monitoring



Time-frequency vibration data analysis



Condition monitoring



Alarm management and maintenance

#### Ordering Information

**IEDGE-VAM-21A (by request)**

- EIS-D150 x1
- 1 x 36WSWPE21001A1 DeviceOn/iEdge Client Bundle License for 1 x device
- Vibration Sensor, Vibration Software, and Vibration DAQ

## Regional Service & Customization Centers

**China** | Kunshan  
86-512-5777-5666

**Taiwan** | Taipei  
886-2-7732-3399

**Netherlands** | Eindhoven  
31-40-267-7000

**Poland** | Warsaw  
00800-2426-8080

**USA** | Milpitas, CA  
1-408-519-3898

## Worldwide Offices

### Asia Pacific

**Taiwan**  
Toll Free 0800-777-111  
Taipei & IoT Campus 886-2-7732-3399  
Taichung 886-4-2372-5058  
Kaohsiung 886-7-392-3600

**China**  
Toll Free 800-810-0345  
Beijing 86-10-6298-4346  
Shanghai 86-21-3632-1616  
Shenzhen 86-755-8212-4222  
Chengdu 86-28-8545-0198  
Hong Kong 852-2720-5118

### Asia Pacific

**Japan**  
Toll Free 0800-500-1055  
Tokyo 81-3-6802-1021  
Osaka 81-6-6267-1887  
Nagoya 81-0800-500-1055  
Nogata 81-949-22-2890

**Korea**  
Toll Free 080-363-9494/5  
Seoul 82-2-3660-9255

**Singapore**  
Singapore 65-6442-1000

**Malaysia**  
Kuala Lumpur 60-3-7725-4188  
Penang 60-4-537-9188

**Thailand**  
Bangkok 66-02-2488306-9

**Vietnam**  
Hanoi 84-24-3399-1155  
Hochiminh 84-28-3836-5856

**Indonesia**  
Jakarta 62-21-751-1939

**Australia**  
Toll Free 1300-308-531  
Melbourne 61-3-9797-0100

**India**  
Bangalore 91-94-4839-7300  
Pune 91-94-2260-2349

### Europe

**Netherlands**  
Eindhoven 31-40-267-7000  
Breda 31-76-523-3100

**Germany**  
Toll Free 00800-2426-8080/81  
Munich 49-89-12599-0  
Düsseldorf 49-2103-97-855-0

**France**  
Paris 33-1-4119-4666

**Italy**  
Milan 39-02-9544-961

**UK**  
Newcastle 44-0-191-262-4844  
London 44-0-870-493-1433

**Spain**  
Madrid 34-91-668-86-76

**Sweden**  
Stockholm 46-0-864-60-500

**Poland**  
Warsaw 48-22-31-51-100

**Russia**  
Moscow 8-800-555-01-50  
St. Petersburg 8-812-332-57-27  
8-921-575-13-59

**Czech Republic**  
Ústí nad Orlicí 420-465-524-421

**Ireland**  
Galway 353-91-792444

### Americas

**North America**  
Toll Free 1-888-576-9668  
Cincinnati 1-513-742-8895  
Milpitas 1-408-519-3898  
Irvine 1-949-420-2500  
Ottawa 1-815-433-5100  
Chicago 1-888-576-9668  
Boston 1-800-866-6008

**Brazil**  
Toll Free 0800-770-5355  
São Paulo 55-11-5592-5367

**Mexico**  
Toll Free 1-800-467-2415  
Mexico City 52-55-6275-2777  
Guadalajara 52-33-3169-7670

**Middle East and Africa**  
Israel 072-2410527  
Turkey 90-212-222-0422  
Turkey-Bursa 90-224-413-3134

**ADVANTECH**

Enabling an Intelligent Planet

[www.advantech.com](http://www.advantech.com)

Please verify specifications before ordering. This guide is intended for reference purposes only.

All product specifications are subject to change without notice.

No part of this publication may be reproduced in any form or by any means, electronic, photocopying, recording or otherwise, without prior written permission of the publisher.

All brand and product names are trademarks or registered trademarks of their respective companies.

© Advantech Co., Ltd. 2021