

Advantech iMachine Smart Machine Management System

A Future of AI-Enabled Machines

Solution Suite

9806IMSAS01, 9806IMSAD01, 9806IMSAD11



ADVANTECH

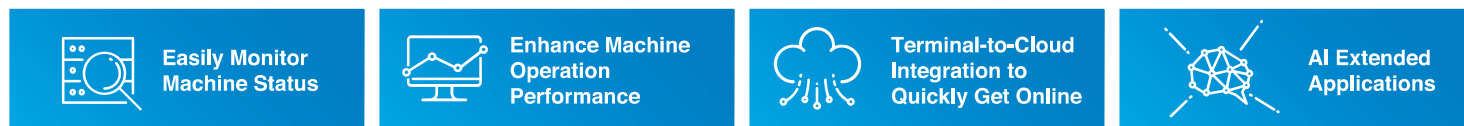
Enabling an Intelligent Planet



Introduction Video

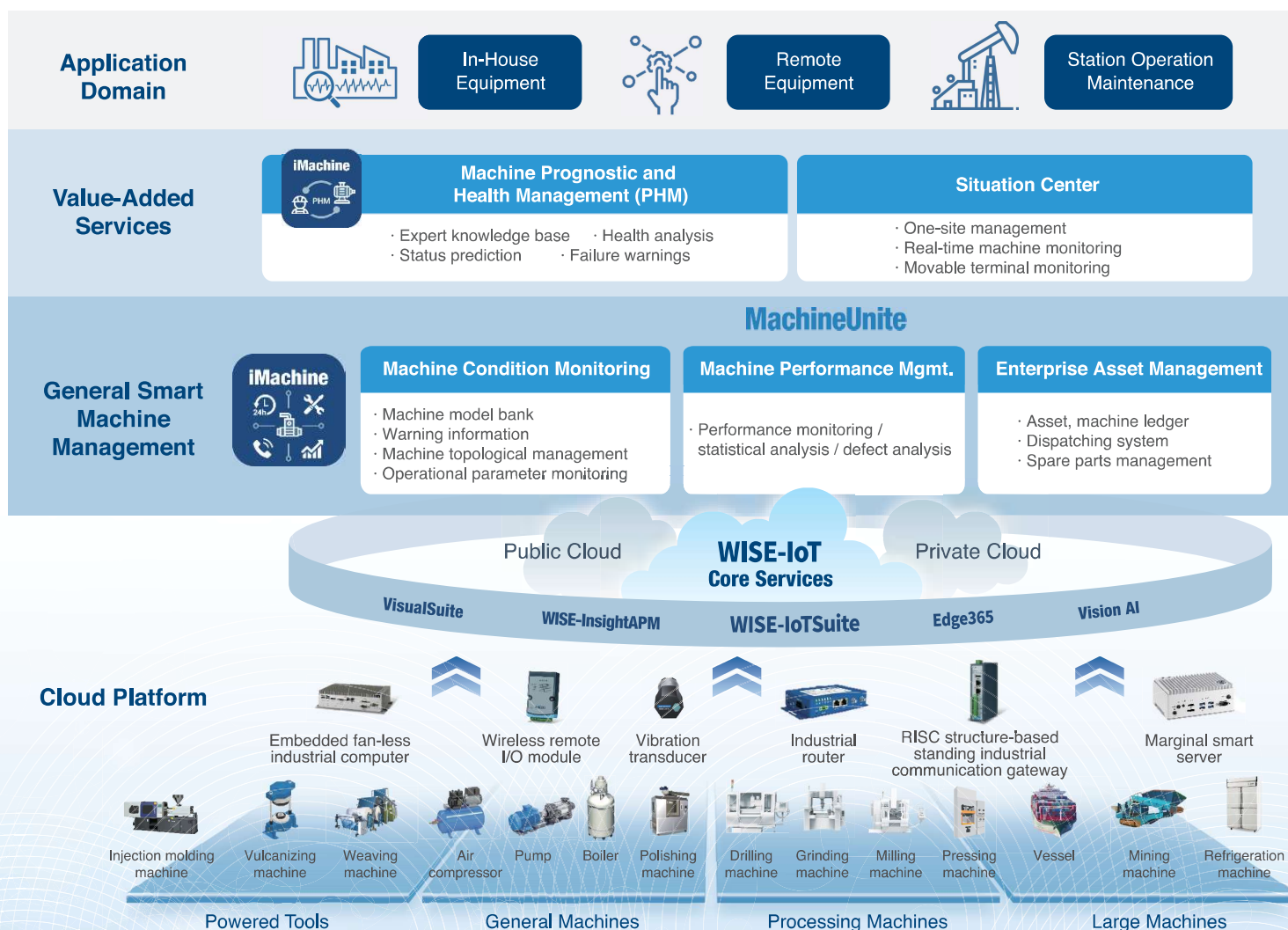
POWERED BY
ADVANTECH 
WISE-PaaS

Solution Introduction



The core of the WISE-iMachine solution is machine asset management which transforms each type of machine into a digital asset for machine integration. Advantech iMachine brings a complete set of solutions from edge-to-cloud to assist you in speeding up the development & deployment of internet machine management, and is fully dedicated to the vertical market and core business. It features an array of value-added applications like machine data control, predictive maintenance, and the situation center. These features can be applied to various scenarios including in-house machine management, remote machine management, and station maintenance.

Application Structure



Complete Solution for Machine Management Digitalization Transformation

- ❌ Complex manual operation
- ❌ Difficulty obtaining complete machine information
- ❌ Failure to respond in real time when there are unexpected damages

- ✅ Machine internet
- ✅ On-line inspection management
- ✅ Predictive maintenance

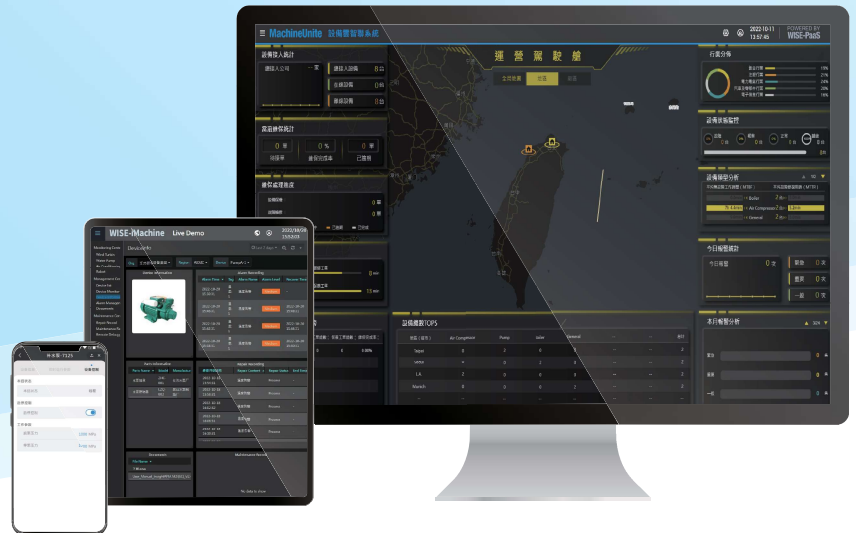
- ✅ Information transparency enhances management efficiency
- ✅ Digital twin accelerates response efficiency
- ✅ Control future risk for early response

Feature Highlights

Situation Room

Tracking Machine Performance

The machine map is based on Google maps and allows you to check machine status and statistical results. It provides warning statistics and category analysis of any machine anomalies.



Machine Performance Management

Real-time production

Management can set targets to support production efficiency for different processes and regions

Root-cause

Analyze statistics to get a deep understanding of root causes of issues to support decisions

Process Monitoring

Provides real-time machine monitoring of various measures to control machine efficiency.



Region Monitoring

Supports regional review with the ability to examine a target machine to manage efficiency.



Vision Analysis Tool

Identify machine inefficiencies with the vision analysis tool.



Root Cause Analysis

Provides a summary of root causes for management to analyze and use to devise improvements.



Machine Condition Monitoring

Real-time monitoring

One-station manages multiple I/O positions of machine data in cooperation with flexible workflows and thresholds. A machine management workstation can be set up in accordance with daily demands and employee knowledge.

Remote control

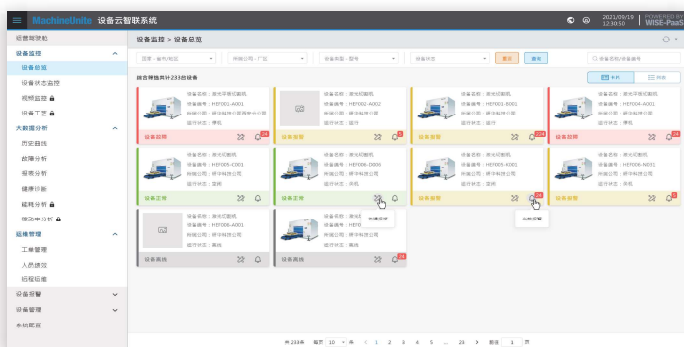
A machine can be connected anytime and anywhere to be controlled remotely. A time schedule and event-triggered conditions can also be set up to automatically manage numerous machines. An unmanned machine room with quick response capability can be achieved.

Anomaly surveillance

Machines can be integrated to provide one-way information. This allows the support administrator to provide rapid response to any issues that may arise.

Machine Overview

Summary of the status for the machine under control.
Any anomalies will be highlighted.



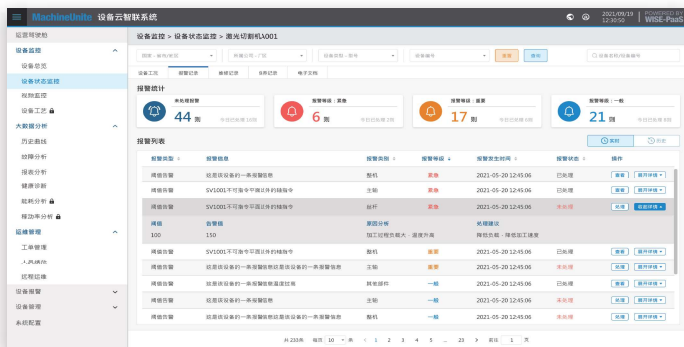
Machine Data Overview

Monitor the real-time status



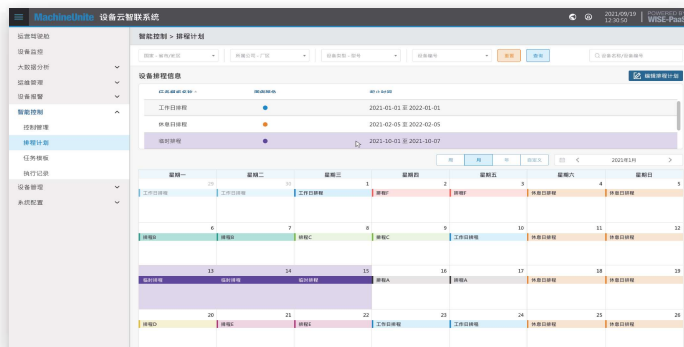
Anomaly Surveillance

Supports machine management and dispatch.



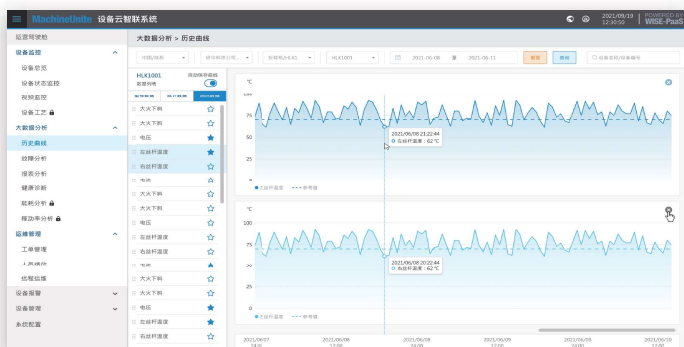
Remote Control

Enables scheduling and an unmanned machine room.



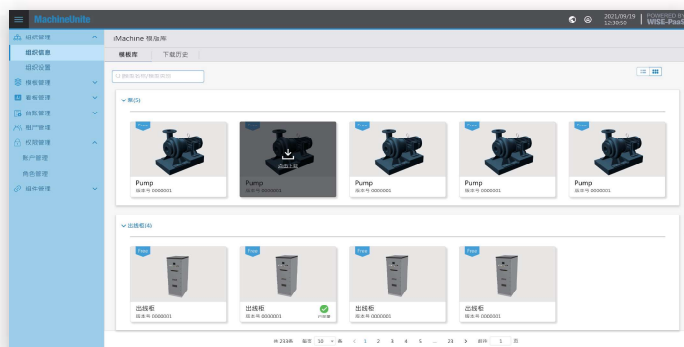
Historical Data Analysis

Supports analysis of different machine parameters and optimizes the maintenance and service strategy.



Machine Management Template

Integrates regional experience to provide management templates and support the administrator for fast implementation.



Enterprise Asset Management

Service & maintenance workflow integration

Summarizes the working items and historical records from maintenance planning to the inspection process. Supports digitalization of the machine management flow.

Virtual scenario integration

Enables review of historical machine information by scanning the QR code on a field machine. Combines virtual stations with real management scenarios.

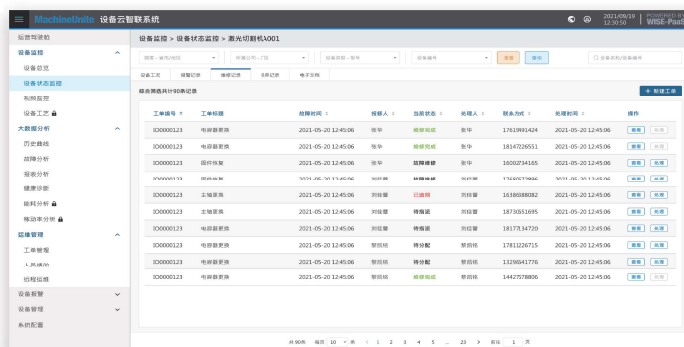
Service & Maintenance Schedule

Defines the maintenance schedule according to each machine



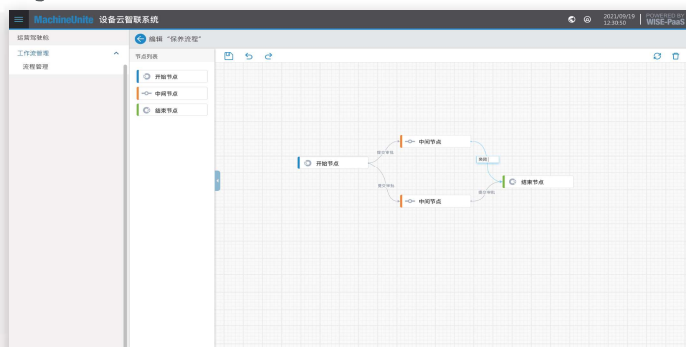
Service Record

Monitor machine tasks to be handled and build a service & maintenance record for each machine



Work Flow Management

Define the appropriate work and approval flow for organizations



Work Progress Surveillance

Monitors the progress of tasks and the personnel responsible for each work order



Machine PHM

Management targets established by flexibly applying AI models

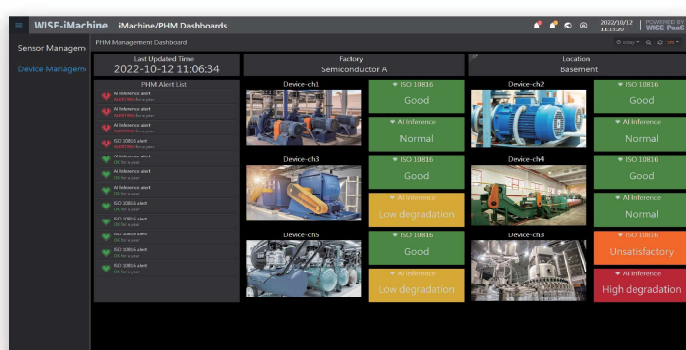
Enables the training and deployment process for an AI model and controls the performance of the AI model.

Machine health index monitoring

ISO10816 and machine degradation process monitoring

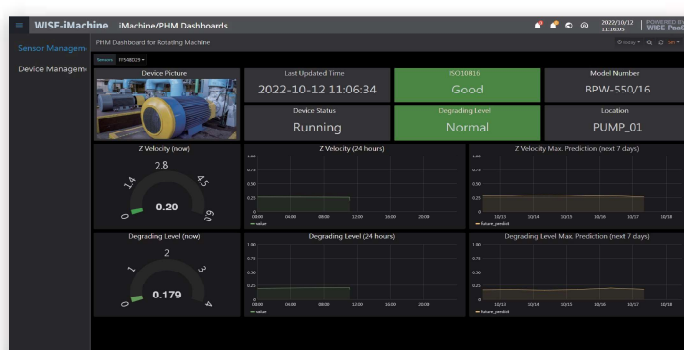
AI Project Management

Set up an AI management scenario for your machine to check the machine AI index



Overview of Machine Diagnosis Information





Determine the effective elements of AI models and provide retrospective and predictive information to support diagnoses



Subscription information

Provides dealers with different subscription plans to provide customers with value-added services. You are invited to join iMachine smart machine management solutions as an ecopartner.

WISE-iMachine	
	Speedy verification solution Available to be used upon connection <div>400 Tags upper limit</div>
Deployment Mechanism	No need for additional deployment
Flexible Expansion	400 Tags per unit
Data Storage	1 year
Data upload	1 minute
Multi-tenant	–

Data Acquisition Terminals	
 ECU-1051 TI Cortex A8 300MHz CPU with DDR3L 128MB RAM ECU-1051TL-R10AAE	 ECU-1051 Intel® Atom® E3940 processor (1.6 GHz) with 8GB DDR3L memory UNO-137-E13BA
 ECU-1251 TI Cortex A8 800MHz CPU with DDR3L 256MB RAM ECU-1251TL-R10AAE	 EI-52 Intel 11th gen. Core i5/i3/Celeron with 8/16 GB Dual-Channel DDR4 Memory EI-52-S6A1 (i5 CPU/16GB) EI-52-S2A1 (i3 CPU/8GB) EI-52-U0A1 (Celeron CPU/8GB)

PHM Vibration Data Acquisition	
 WISE-6610 Enhanced LoRaWAN Gateway WISE-6610-N100-A (LoRaWAN gateway supports up to 100 nodes at 915 MHz)	 WISE-2410 LoRaWAN Vibration Wireless Sensor WISE-2410-NB (US) WISE-2410-EB (EU) WISE-2410X-E21NA (IECEX Zeon21 for NA915 Band)



Subscribe WISE-Marketplace

ADVANTECH

Enabling an Intelligent Planet

Advantech Co., Ltd.
 No. 1, Aly. 20, Ln. 26, Ruiguang Rd.,
 Neihu Dist., Taipei City 114
 Tel:886-2-7747-7193
 Fax:886-2-2794-7302

Advantech Co., Ltd. Tainan Office
 Room 225, No. 301, Gaofa 3rd Rd.,
 Guiren Dist., Tainan City 711
 Tel:886-2-7747-7193
 Fax:886-6-303-2127

Advantech Co., Ltd. Taichung Branch
 3F, No. 499, Zhongming S. Rd., West Dist.,
 Taichung City 403
 Tel:886-2-7747-7193
 Fax:886-4-2372-6028

Advantech Co., Ltd. Kaohsiung Branch
 A1, 21F, No. 502, Jiuru 1st Rd., Sanmin Dist.,
 Kaohsiung City 807
 Tel:886-2-7747-7193
 Fax:886-7-390-0217