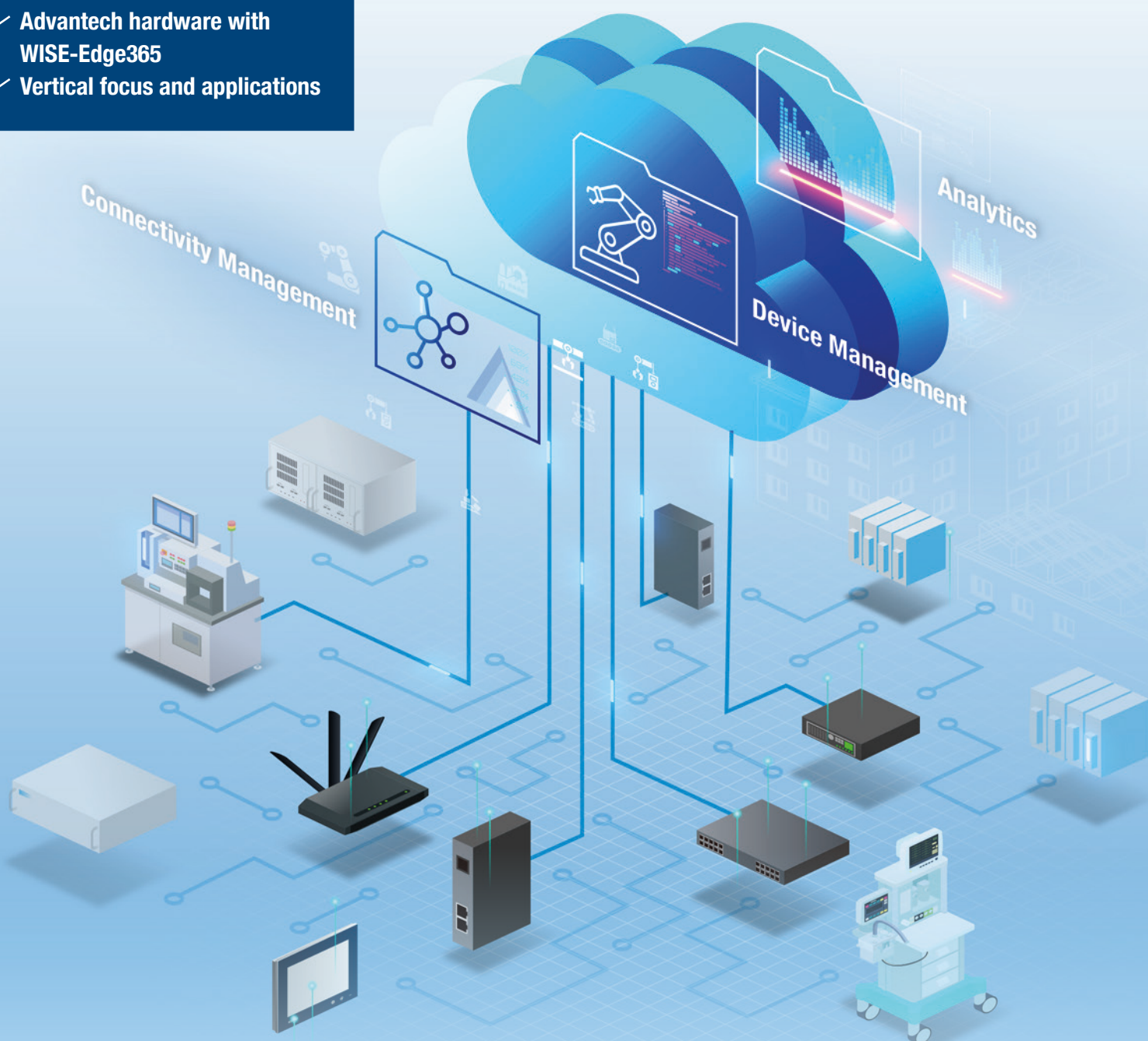


WISE-Edge365

IoT Edge Device Management Platform

- What is WISE-Edge365
- An overview of WISE-Edge365 functions
- Advantech hardware with WISE-Edge365
- Vertical focus and applications



ADVANTECH

Enabling an Intelligent Planet

www.advantech.com

Pain Points in IoT Environments

Complex Integration with Mass Deployment

- Edge devices are usually deployed in the same network. However, the complexity of edge devices and protocols increases the difficulty of data integration.
- Large amounts of time and manpower are required for programming to ensure that devices communicate with each other.



Difficulty of Maintaining Uptime

- Computing systems in their fields of operation are usually located at unstaffed or remote sites. It is difficult and costly to maintain system uptime and prevent equipment breakdown.



Start Managing Your Devices and Data with WISE-Edge365

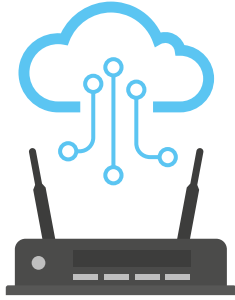
WISE-Edge365 offers you a complete device management service, together with edge software and a cloud service, to connect to Advantech IoT devices, and remotely manage those devices along with their data and applications.

WISE-Edge365 can operate in either a SaaS or on-premise environment, providing a user-friendly interface through the portal. Users can log in to access every function such as device configuration, real-time monitoring, and user management. In addition, it is simple and flexible to visualize data and export third-party systems.

Your Benefits at a Glance

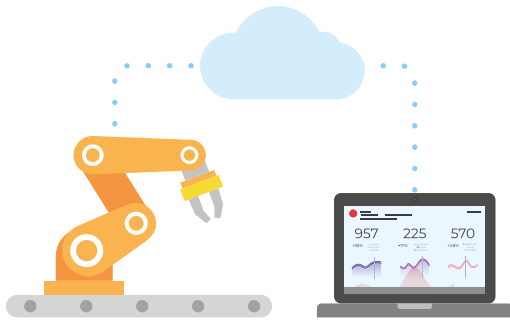
- ✓ A single management platform reduces the hassle of system integration
- ✓ Remote access to systems which minimizes downtime
- ✓ Increased operation efficiency with IoT connectivity and OTA functions
- ✓ One-stop shopping for everything you need at the edge
- ✓ SaaS-based device management, pay-as-you-go

An Overview of WISE-Edge365 Functions



Everything You Need for IoT Edge

Advantech offers IPC, protocol gateways, intelligent I/O, wireless gateways, etc. It's a one-stop shop for everything you need for AIoT projects.



A Single Platform for Device Management

WISE-Edge365 provides a single platform for you to manage all your edge devices to reduce the complication of using multiple management platforms from different vendors.



Analyze Your Data with Dashboards

WISE-Edge365 comes with cloud dashboards for you to build big data analytic applications in a no-code environment.



Maintenance Resource Optimization

Users can set maintenance alarms with big data dashboards. Dispatch lists can also be sent out to maintenance engineers to efficiently utilize their work force.

How Does WISE-Edge365 Work for You

1. Connect all Things at the Edge

- 200+ communication drivers and multiple protocols support

2. Link IoT Devices to Cloud

- Authentication & instant on-boarding
- Enhanced security with VPN & MQTTs

3. Manage Device and Data from the Cloud

- Real-time monitoring & remote control
- OTA update: firmware, software, application
- Virtual physics model
- Dashboard and alarm notification
- Multi-tenant architecture
- Public cloud and on-premise
- Open API for easy integration

Start your new project with WISE-Edge365

Get started with the beta trial or visit our website to learn more about WISE-Edge365



Try Beta

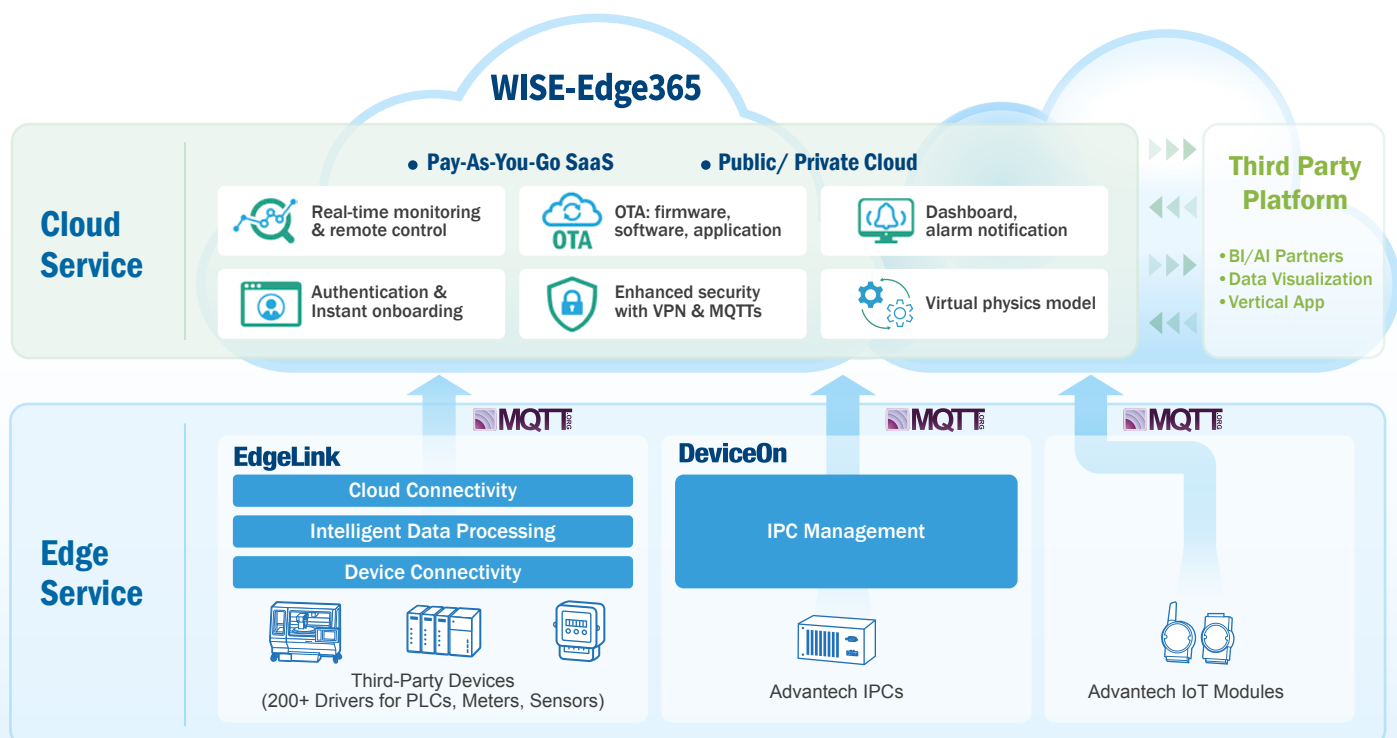


Learn More

Manage Your Advantech Hardware with WISE-Edge365

WISE-Edge365 plays an essential role in device management of different Advantech hardware, such as remote I/O, wireless I/O, protocol gateways, IPC, and more.

Functions	Remote I/O	Wireless I/O	Protocol Gateway (EdgeLink)	IPC & Panel PC
Remote I/O Configuration	✓	✓		
Remote I/O, OS, Tag Monitor	✓	✓	✓	✓
Remote OS Control (Reboot, Shutdown)				✓
Remote iBMC Control (Turn On, Turn Off, Reset, Shutdown)				✓ (Hardware must support iBMC)
Firmware OTA		✓	✓	
Configuration File OTA		✓		
Remote Application Management				✓
EdgeLink Project File Dispatch			✓	



Vertical Focus and Applications

Smart Factories



Remote Equipment Management & Maintenance

Equipment such as boilers and compressors play key roles in the operation of a factory. WISE-Edge365 helps customers connect the equipment and data via Advantech IoT devices, and transmits the data to the cloud. WISE-Edge365 also supports OTA updates which can help machine builders remotely catch issues and update software on devices that are difficult to access.

Building

Remote HVAC Monitoring & Maintenance

HVAC monitoring is important as it is a major contributor to the maintenance and energy consumption expenses of a building. WISE-Edge365 offers a reliable solution for remote operation and maintenance of IoT devices connected to HVAC to track energy consumption and the performance of heating, ventilation, and air conditioning units.



Energy & Environment



Distributed Remote Monitoring

WISE-Edge365 provides a cloud-enabled facility and environmental monitoring for water management systems. Advantech IoT devices bundled with edge software can track the real-time operating status of distributed pumps and remotely control the water supply.

Regional Service & Customization Centers

China	Kunshan 86-512-5777-5666	Taiwan	Taipei 886-2-7732-3399	Netherlands	Eindhoven 31-40-267-7000	Poland	Warsaw 00800-2426-8080	USA	Milpitas, CA 1-408-519-3898
--------------	-----------------------------	---------------	---------------------------	--------------------	-----------------------------	---------------	---------------------------	------------	--------------------------------

Worldwide Offices

Asia Pacific		Asia Pacific		Europe		Americas	
Taiwan		Japan		Netherlands		North America	
Toll Free	0800-777-111	Toll Free	0800-500-1055	Eindhoven	31-40-267-7000	Toll Free	1-888-576-9668
Taipei & IoT Campus	886-2-2792-7818	Tokyo	81-3-6802-1021	Breda	31-76-523-3100	Cincinnati	1-513-742-8895
Taichung	886-4-2372-5058	Osaka	81-6-6267-1887	Germany	00800-2426-8080/81 49-89-12599-0 49-2103-97-855-0	Milpitas	1-408-519-3898
Kaohsiung	886-7-392-3600	Nagoya	81-0800-500-1055			Irvine	1-949-420-2500
		Nogata	81-949-22-2890			Ottawa	1-815-433-5100
China		Korea		France		Brazil	
Toll Free	800-810-0345	Toll Free	080-363-9494/5	Paris	33-1-4119-4666	Toll Free	0800-770-5355
Beijing	86-10-6298-4346	Seoul	82-2-3660-9255	Italy	39-02-9544-961	São Paulo	55-11-5592-5367
Shanghai	86-21-3632-1616	Singapore				Mexico	
Shenzhen	86-755-8212-4222	Singapore	65-6442-1000	UK		Toll Free	1-800-467-2415
Chengdu	86-28-8545-0198	Malaysia		Newcastle	44-0-191-262-4844	Mexico City	52-55-6275-2777
Hong Kong	852-2720-5118	Kuala Lumpur	60-3-7725-4188	London	44-0-870-493-1433	Guadalajara	52-33-3169-7670
		Penang	60-4-537-9188	Spain		Middle East and Africa	
		Thailand		Madrid	34-91-668-86-76	Israel	072-2410527
		Bangkok	66-02-2488306-9	Sweden		Turkey	90-212-222-0422
		Vietnam		Stockholm	46-0-864-60-500	Turkey-Bursa	90-224-413-3134
		Hanoi	84-24-3399-1155	Poland			
		Hochiminh	84-28-3836-5856	Warsaw	48-22-31-51-100		
		Indonesia		Russia			
		Jakarta	62-21-751-1939	Moscow	8-800-555-01-50		
		Australia		St. Petersburg	8-812-332-57-27		
		Toll Free	1300-308-531		8-921-575-13-59		
		Melbourne	61-3-9797-0100	Czech Republic			
		India		Ústí nad Orlicí	420-465-524-421		
		Bangalore	91-94-4839-7300	Ireland			
		Pune	91-94-2260-2349	Galway	353-91-792444		

www.advantech.com

Please verify specifications before ordering. This guide is intended for reference purposes only.
All product specifications are subject to change without notice.
No part of this publication may be reproduced in any form or by any means, electronic, photocopying, recording or otherwise, without prior written permission of the publisher.
All brand and product names are trademarks or registered trademarks of their respective companies.
© Advantech Co., Ltd. 2023



Enabling an Intelligent Planet