

EdgeSync 360/ EdgeHub

Advantech Device Management Platform

- What is EdgeSync 360/ EdgeHub
- An overview of EdgeHub functions
- Advantech hardware with EdgeHub
- Vertical focus and applications



ADVANTECH

Enabling an Intelligent Planet

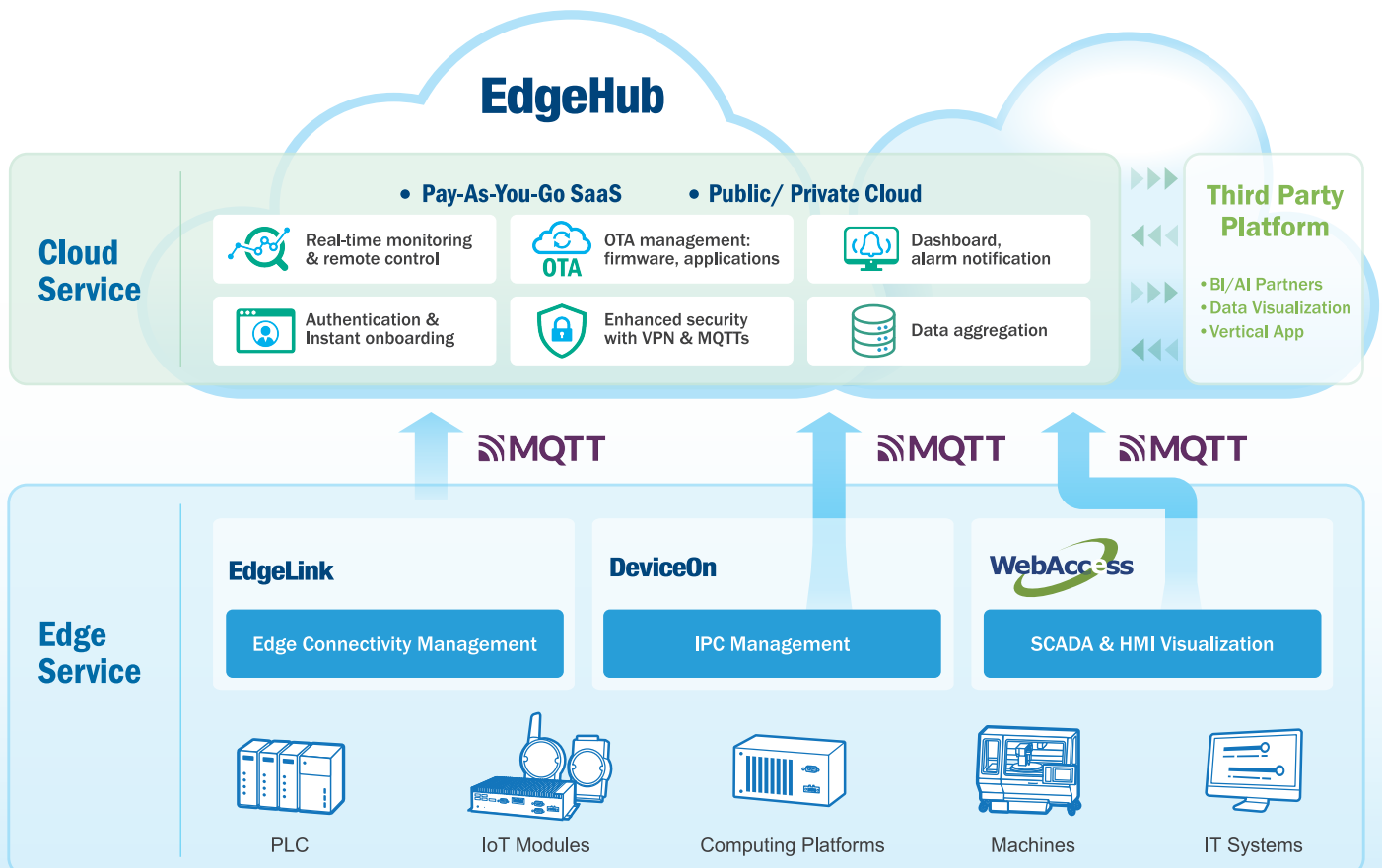
www.advantech.com

Start Managing Your Devices and Data with EdgeSync 360/ EdgeHub

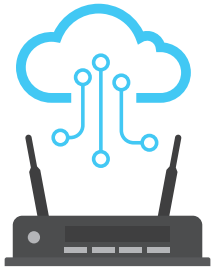
EdgeSync 360/ EdgeHub, also known as EdgeHub, is a centralized platform that streamlines edge connectivity, device management, and data analysis, distributing intelligence across edge devices. It offers a seamless method to mass deploy and update not only software applications but also Docker containers, firmware, operating systems, and Linux applications in batches from cloud to edge. Users would be able to implement new software configurations remotely across an industrial plant or on multiple pieces of equipment, reducing costs effectively.

Benefits at a Glance

- ✓ A single management platform reduces the hassle of system integration
- ✓ Remote access to systems which minimizes downtime
- ✓ Increased operation efficiency with IoT connectivity and OTA functions
- ✓ SaaS-based device management, pay-as-you-go

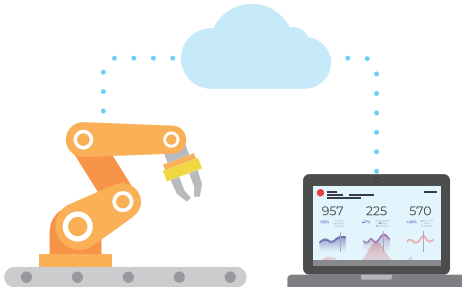


An Overview of EdgeHub Functions



Everything You Need for IoT Edge

Advantech offers IPC, protocol gateways, intelligent I/O, wireless gateways, etc. It's a one-stop shop for everything you need for AIoT projects.



A Single Platform for Device Management

EdgeHub provides a single platform for you to manage all your edge devices to reduce the complication of using multiple management platforms from different vendors.



Analyze Your Data with Dashboards

EdgeHub comes with cloud dashboards for you to build big data analytic applications in a no-code environment.



Maintenance Resource Optimization

Users can set maintenance alarms with big data dashboards. Dispatch lists can also be sent out to maintenance engineers to efficiently utilize their work force.

How Does EdgeHub Work for You

1. Connect all Things at the Edge

- 200+ communication drivers and multiple protocols support

2. Link IoT Devices to Cloud

- Authentication & instant on-boarding
- Enhanced security with VPN & MQTTs

3. Manage Device and Data from the Cloud

- Real-time monitoring & remote control
- OTA management: firmware, applications
- Data aggregation
- Dashboard and alarm notification
- Multi-tenant architecture
- Public cloud and on-premise
- Open API for easy integration

Start your new project with EdgeHub

Get started with the trial or visit our website to learn more about EdgeHub



Free Trial



Learn More

Manage Your Advantech Hardware with EdgeHub

EdgeHub plays an essential role in device management of different Advantech hardware, such as remote I/O, wireless I/O, protocol gateways, IPC, and more.

Functions	Remote I/O	Wireless I/O	Protocol Gateway (EdgeLink)	IPC & Panel PC
Remote I/O Configuration	✓	✓		
Remote I/O, OS, Tag Monitor	✓	✓	✓	✓
Remote OS Control (Reboot, Shutdown)				✓
Remote iBMC Control (Turn On, Turn Off, Reset, Shutdown)				✓ (Hardware must support iBMC)
Firmware OTA	✓	✓	✓	
Configuration File OTA	✓	✓		
Remote Application Management				✓
EdgeLink Project File Dispatch			✓	

Empower Cloud SCADA Graphics with EdgeHub

Integrated with EdgeHub, the new Cloud SCADA Graphics module simplifies supervisory control design and monitoring. Crafting the customized panels is no longer a daunting task, Cloud SCADA Graphics allows you to illustrate your supervisory control concepts and display real-time data with ease.

- Aligns drawing concepts with market-known slide-making tools.
- Configures visual effects based on customized rules and scripts.
- Easily tracks and undoes recent drawing amendments.
- Groups drawings into objects for future use.
- Views drawings from Chrome-based browsers or remote clients.
- Prioritizes security by implementing permission controls.



Vertical Focus and Applications

Smart Factories



Remote Equipment Management & Maintenance

Equipment such as boilers and compressors play key roles in the operation of a factory. EdgeHub helps customers connect the equipment and data via Advantech IoT devices, and transmits the data to the cloud. EdgeHub also supports OTA updates which can help machine builders remotely catch issues and update software on devices that are difficult to access.

Building

Remote HVAC Monitoring & Maintenance

HVAC monitoring is important as it is a major contributor to the maintenance and energy consumption expenses of a building. EdgeHub offers a reliable solution for remote operation and maintenance of IoT devices connected to HVAC to track energy consumption and the performance of heating, ventilation, and air conditioning units.



Energy & Environment



Distributed Solar Plant Management

EdgeHub, bundled with Advantech IoT devices and edge software, delivers a cloud-enabled solar energy management system. It tracks real-time inverter status, Specific Yield, CUF, Performance Ratio, facility health, and various environmental elements to ensure the efficiency of solar power generation.

Regional Service & Customization Centers

China	Kunshan 86-512-5777-5666	Taiwan	Taipei 886-2-7732-3399	Netherlands	Eindhoven 31-40-267-7000	Poland	Warsaw 00800-2426-8080	USA	Milpitas, CA 1-408-519-3898
--------------	-----------------------------	---------------	---------------------------	--------------------	-----------------------------	---------------	---------------------------	------------	--------------------------------

Worldwide Offices

Asia Pacific

Taiwan	
Toll Free	0800-777-111
Taipei & IoT Campus	886-2-2792-7818
Taichung	886-4-2372-5058
Kaohsiung	886-7-392-3600
China	
Toll Free	800-810-0345
Beijing	86-10-6298-4346
Shanghai	86-21-3632-1616
Shenzhen	86-755-8212-4222
Chengdu	86-28-8545-0198
Hong Kong	852-2720-5118

Asia Pacific

Japan	
Toll Free	0800-500-1055
Tokyo	81-3-6802-1021
Osaka	81-6-6267-1887
Nagoya	81-0800-500-1055
Nogata	81-949-22-2890
Korea	
Toll Free	080-363-9494/5
Seoul	82-2-3660-9255
Singapore	
Singapore	65-6442-1000
Malaysia	
Kuala Lumpur	60-3-7725-4188
Penang	60-4-537-9188
Thailand	
Bangkok	66-02-2488306-9
Vietnam	
Hanoi	84-24-3399-1155
Hochiminh	84-28-3836-5856
Indonesia	
Jakarta	62-21-751-1939
Australia	
Toll Free	1300-308-531
Melbourne	61-3-9797-0100
India	
Bangalore	91-94-4839-7300
Pune	91-94-2260-2349

Europe

Netherlands	
Eindhoven	31-40-267-7000
Breda	31-76-523-3100
Germany	
Toll Free	00800-2426-8080/81
Munich	49-89-12599-0
Düsseldorf	49-2103-97-855-0
France	
Paris	33-1-4119-4666
Italy	
Milan	39-02-9544-961
UK	
Newcastle	44-0-191-262-4844
London	44-0-870-493-1433
Spain	
Madrid	34-91-668-86-76
Sweden	
Stockholm	46-0-864-60-500
Poland	
Warsaw	48-22-31-51-100
Russia	
Moscow	8-800-555-01-50
St. Petersburg	8-812-332-57-27
	8-921-575-13-59
Czech Republic	
Ústí nad Orlicí	420-465-524-421
Ireland	
Galway	353-91-792444

Americas

North America	
Toll Free	1-888-576-9668
Cincinnati	1-513-742-8895
Milpitas	1-408-519-3898
Irvine	1-949-420-2500
Ottawa	1-815-433-5100
Chicago	1-888-576-9668
Boston	1-800-866-6008
Brazil	
Toll Free	0800-770-5355
São Paulo	55-11-5592-5367
Mexico	
Toll Free	1-800-467-2415
Mexico City	52-55-6275-2777
Guadalajara	52-33-3169-7670
Middle East and Africa	
Israel	072-2410527
Turkey	90-212-222-0422
Turkey-Bursa	90-224-413-3134

www.advantech.com

Please verify specifications before ordering. This guide is intended for reference purposes only.

All product specifications are subject to change without notice.

No part of this publication may be reproduced in any form or by any means, electronic, photocopying, recording or otherwise, without prior written permission of the publisher.

All brand and product names are trademarks or registered trademarks of their respective companies.

© Advantech Co., Ltd. 2023

ADVANTECH

Enabling an Intelligent Planet