

iEMS

Intelligent Energy Management Solutions

AI Transformation: Smart Low-Carbon Transition



ADVANTECH

Enabling an Intelligent Planet



Explore iEMS Suite

ADVANTECH 
WISE-IoT

Intelligent Energy Management Solutions

Advantech's iEMS Suite technology is a cutting-edge solution for corporations striving towards carbon neutrality. This smart energy system aligns with ISO 14064/ISO 14067 and ISO 50001 standards, focusing on carbon asset and energy management. It addresses the pressing need to reduce greenhouse gas emissions, enhancing HVAC, compressed air, and motor efficiency. Ideal for businesses committed to sustainability, iEMS Suite is your partner in achieving environmental goals and contributing to a healthier planet.



1 One-Stop Smart Energy Management Anchored on Low Carbon

iEMS Suite offers an end-to-cloud holistic framework, emphasizing carbon emission control, enterprise energy oversight, and key equipment energy optimization.



2 ISO-Compliant Energy & Carbon Stewardship

Aligning with standards like ISO50001, ISO14064, and ISO14067, our system prioritizes precise data acquisition, smart intervention, and comprehensive analytics.



3 Streamlined, User-Centric Solutions

Our platform boasts a web-based, drag-and-drop interface, supplemented with adaptable templates. This ensures not only easy replication but also facilitates seamless user adoption and engagement.



4 Real-Time Energy & Carbon Metrics Visualization

Harnessing cloud-based intelligence, our visual dashboards equip businesses with instant insights into energy and carbon metrics. This allows executives to craft timely, initiative-aligned decisions that foster operational cost efficiency.

Focused Industries



Traditional Manufacturing

Provide comprehensive energy management services for smart manufacturing plant management.

Focused Industry:

Chemical, Petro Chemical, Steel, Textile



Hi-Tech Industry

Provide high-tech factory management and large-scale park energy management services

Focused Industry:

Electronic, Electrical Machinery, Semi Conductor



Retail & Chain Stores

Provide comprehensive energy management services for the retail and chain store sectors.

Focused Industry:

Retail, Shopping Centers, Parks



Hotel, Finance & Hospital

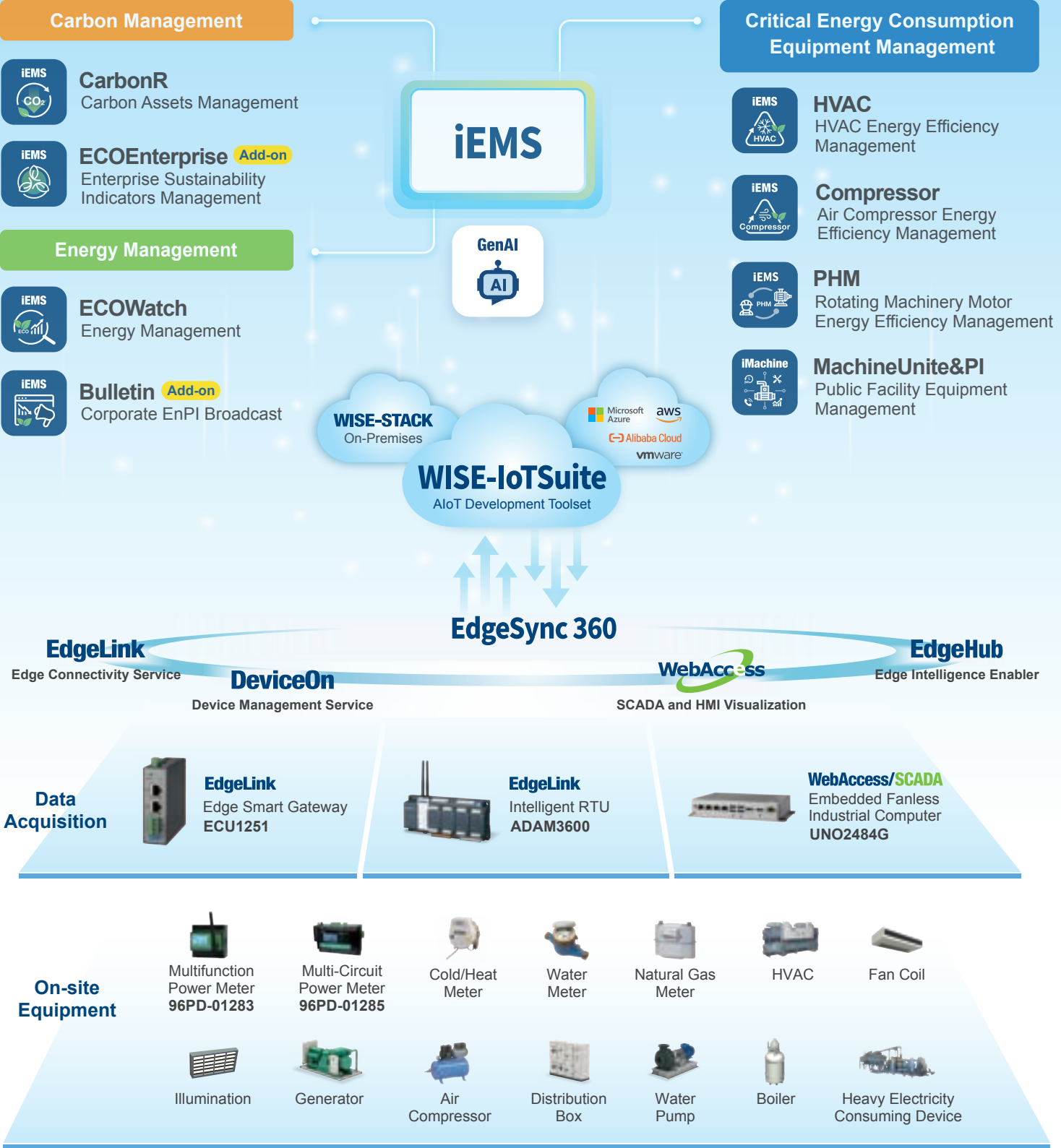
Offer tailor-made comprehensive energy management services for various service industries.

Focused Industry:

Finance, Hotels, Healthcare Facilities



ADVANTECH 
WISE-IoT iEMS Suite



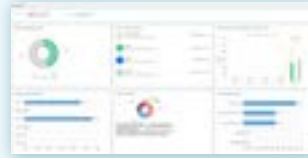
Industrial Apps

Carbon Management



CarbonR

Analyze enterprise carbon emissions and product carbon footprint with digital carbon inventory system. Ensure ISO 14064 / 14067 compliance.



ECOEnterprise **Add-on**

A CarbonR add-on module designed to assess the sustainability KPIs of global enterprises, covering energy performance, SBTi, RE100 progress, and energy-saving outcomes.



Energy Management



ECOWatch

Track energy and renewable energy performance KPIs. Conduct multi-dimensional analysis of energy data for cost reduction. Manage energy conservation projects. Ensure ISO 50001 compliance.



Bulletin **Add-on**

An add-on module of ECOWatch for public audiences to quickly understand corporate energy performance.



Critical Energy Consumption Equipment Management



HVAC

Monitor HVAC system & AI control to achieve management efficiency improvement and overall energy cost reduction.



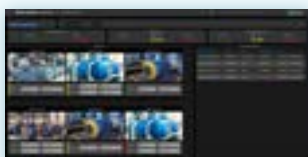
Compressor

Optimize management efficiency and reduce energy costs across the entire compressed air system by combining centralized control, information processing, energy-saving control, and predictive maintenance.



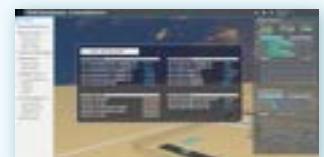
PHM

Identify abnormalities or deterioration, understand equipment status, enhance management and maintenance efficiency, extend equipment lifespan, and reduce life cycle operating costs of motor equipment.



MachineUnite & PI

Connect all public facility equipment, including chillers, compressors, boilers, heat pumps, generators, etc., onto a single platform to manage their entire lifecycle. Automate repair and maintenance assignments to enhance availability, minimize downtime, and mitigate risks.



Success Cases



Semiconductor Industry

VISHAY Vishay Leverages Advantech's iEMS Suite for Energy Management Solutions across Asia-Pacific

"For a semiconductor factory that operates 24/7 all year round, the key to minimizing energy waste and carbon emissions while lowering production costs lies in tracking energy consumption and promptly identifying anomalies."

Hai Tsai,
Asia-Pacific's Senior Director of Vishay Group



Hospital Industry



Advantech's iEMS Suite Optimizes Mennonite Christian Hospital Management

"Dispersed across a large area, Mennonite Hospital's campuses need a unified platform to transmit operational data for AI-assisted decision-making. This includes monitoring earthquake status and other vital corporate operations. Advantech, our chosen partner, is selected for being top in the field."

Lin Wen -Hsiu,
Director of Engineering Management Department

Case Benefits

- Improved equipment efficiency and resource utilization.
- Reduced production costs and human resources.
- Decreased equipment maintenance costs and equipment failure rates.

Case Benefits

- Enables accurate planning and utilization of the solar power system.
- Reduces carbon emissions and electricity costs.
- Realizes the goals of energy conservation and consumption reduction.



Electric Power Distribution Industry

TGOOD STRATEGY Advantech's iEMS Suite Assists Chuan Kai Electric to Move Toward Smart Energy

"Advantech shows its commitment to reducing industrial carbon emissions by offering the latest and most practical solutions and products."

Shi-Xu Liu,
President of the Smart Energy Research Institute of Chuan Kai Electric



Semiconductor Industry



Advantech's iEMS Suite Facilitates Energy Conservation and Carbon Reduction Goals for YC Group

"Implementing an energy management system not only enhances the benefits of energy conservation and carbon reduction but also optimizes the operational costs and increases YC Group's competitiveness in the global market."

Bai-Xiang Cheng,
General Coordinator of YC Group

Case Benefits

- Enables accurate planning and utilization of the solar power system.
- Reduces carbon emissions and electricity costs.
- Realizes the goals of energy conservation and consumption reduction.

Case Benefits

- Centralized management of energy status across various plants.
- Optimization of the group's operational costs.
- Achieving the company's mission of promoting environmental sustainability.

iEMS



Generative AI for Smart Low-Carbon Transformation



Knowledge management involving documents and data.



Retrieve information through a user-friendly interface.



Efficiently organize the unstructured data.



Understandable domain knowledge delivery.



Improved data interpretation reliability.



Organize information with flexibility and efficiency.



Energy-Saving Strategy Knowledge Base

- iEMS energy data integration
- Merge energy-saving specialists' knowhow
- Include practical problem-solving experience



Equipment Management Knowledge Base

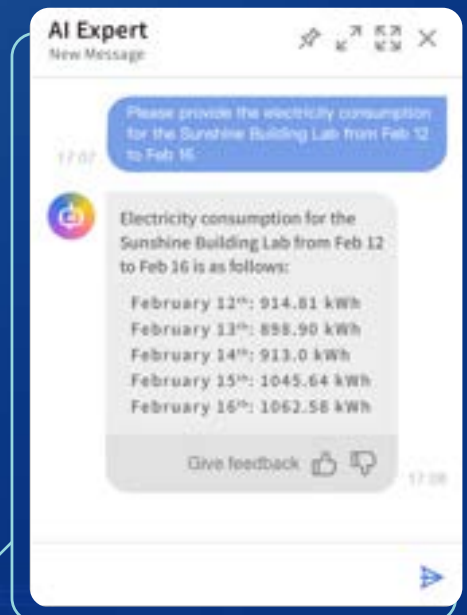
- HVAC data integration
- Merge machine experts' knowhow
- Include practical problem-solving experience











System Support Knowledge Base

- Multilingual System Support

AI Expert Interface Display:



Subscription Information

iEMS Suite	 CarbonR Carbon Assets Management	 HVAC HVAC Energy Efficiency Management
	 ECOEnterprise Add-on Enterprise Sustainability Indicators Management	 Compressor Air Compressor Energy Efficiency Management
	 ECOWatch Energy Management	 PHM Rotating Machinery Motor Energy Efficiency Management
	 Bulletin Add-on Corporate EnPI Broadcast	 MachineUnite&PI Public Facility Equipment Management

Available Configurations

Edge Smart Collection Channel	ESRP-IEMS-ECU1051 ECU-1051, WISE-EdgeLink, VPN	 EdgeSync 360 WISE-EdgeLink WISE-InsightAPM/VPN
	ESRP-IEMS-ECU1251 ECU-1251, WISE-EdgeLink, VPN	 EdgeSync 360 WISE-EdgeLink WISE-InsightAPM/VPN
Intelligent RTU	SRP-IFS210-D36TAE ADAM-3600, Linux Kernal 3.12 RT, WISE-EdgeLink	 EdgeSync 360 WISE-EdgeLink
Edge Smart Server	WA-SU2483G-750HA01 UNO-2483G, Microsoft Windows 10 Pro 64-bit WebAccess/SCADA 5000 tags	 WebAccess/SCADA



Enabling an Intelligent Planet

Advantech Co., Ltd.

No. 1, Aly. 20, Ln. 26, Ruiguang Rd., Neihu Dist.,
Taipei City 114519, Taiwan
Tel : 886-2-7747-7193
Fax : 886-2-2794-7302
Contact Us : WISE.iEMS@advantech.com.tw



iEMS Suite Free Trial /
Partner Cooperation