

iVision Suite Solution

Optimize Safety and Operations Management with Intelligent Video Analysis

- / People Counting
- / Facial Recognition
- / Object Detection



PeopleCount



FaceMatch



ObjectVA

Vision AI



ADVANTECH

Enabling an Intelligent Planet

intel
partner
Titanium

www.advantech.com

iVision Suite Solution

iVision Suite is a cutting-edge intelligent video analysis solution based on AI video analysis technology to provide people detection (PeopleCount), facial recognition (FaceMatch), and object recognition (ObjectVA). We accelerate people detection development with Intel® OpenVINO™ and conduct object recognition image training with Intel® Geti™.

Advantech installs our video analysis software on an AI edge computer, which can be quickly deployed on site through the low-code platform and it can easily be integrated with existing third-party services.

Enhanced Management Efficiency with SignageCMS

All video analysis sources within the iVision Suite are seamlessly integrated with SignageCMS. This integration allows for the real-time display of data, detected images, and anomaly alerts on digital signage, significantly boosting management efficiency.

Strengthened Safety through iFactory EHS Dashboard

Connect iVision Suite to the iFactory EHS dashboard for comprehensive tracking and analysis of abnormal events. This strengthens safety management by providing detailed insights and analytics.

Architecture



*Enhance people detection development with Intel® OpenVINO™ and conduct object recognition image training with Intel® Geti™.

AI Video Analysis Models

PeopleCount
PeopleCount utilizes vision AI technology to detect people. It can be applied to people counting, occupancy management, and smart queues.

FaceMatch
FaceMatch is a facial recognition platform that enables users to identify facial profiles with 99.8% accuracy. It can be applied to attendance taking, access control, and device authentication.

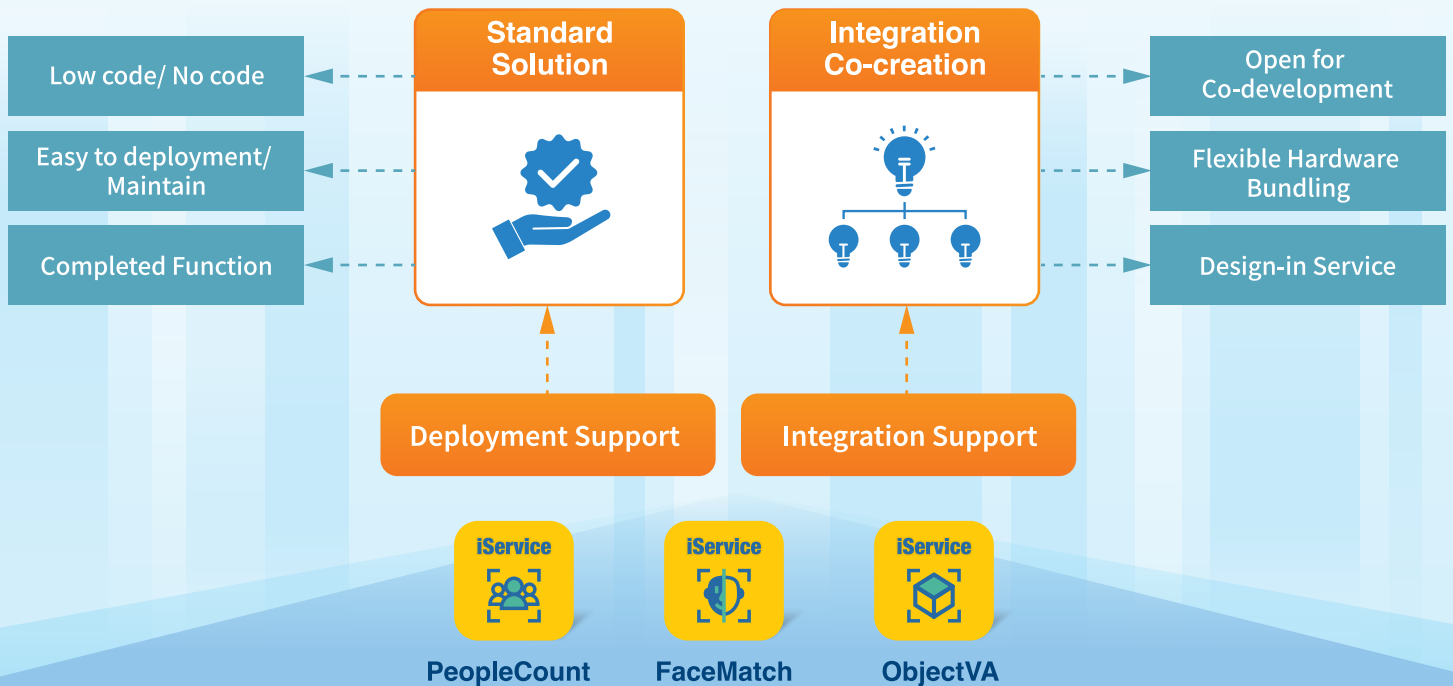
ObjectVA
ObjectVA is a low code platform for object detection and recognition. Through object recognition training, it improves personnel safety and management efficiency.



Scenarios



Solution Benefits



High Accuracy over 99%	Industrial Level HW + SW	Rich Software Functions	Scalable Design
Taiwan AI Engine	Cost Effective	Co-Design Ability	Project Readiness

iVision Suite Solution

People Counting Solution Package

Smart Counting Camera	AI People Counting	AI People Counting Integrated with Object AI
<ul style="list-style-type: none"> All-in-One device Device for data capture, analysis and delivery Easy installation and configuration via web browser Excluding/including children Suitable for indoor and outdoor entrances 	<ul style="list-style-type: none"> Existing cameras can be used to connect RTSP streams to the vision AI edge for people counting and occupancy control Suitable for complex entrances and exits people counting It can be applied to occupancy, smart queue and intrusion detection 	<ul style="list-style-type: none"> Existing cameras can be used to connect RTSP streams to the vision AI edge for people counting, with advanced capabilities for counting specific objects, such as worker's vest Differentiate between staff members and regular people Object ai image recognition training is required
 	 	  
<p>Camera: UCAM-130 Software: PeopleCount</p>	<p>Vision AI Edge: UBX-110 Software: PeopleCount</p>	<p>Vision AI Edge: UBX-110 Software: PeopleCount \ ObjectVA</p>

Facial Recognition Solution Package

IP Camera (IP Camera + FaceMatch Edge)	FR tablet (FR tablet + FaceMatch Manager)	AI Camera (AI Camera + FaceMatch Manager)
<ul style="list-style-type: none"> Existing cameras can be used to connect RTSP streams to FaceMatch edge One FaceMatch edge supports 6 camera sources FaceMatch Manager is required for data integration when the video sources are more than 6 Suitable for attendance taking 	<ul style="list-style-type: none"> FR tablet with built-in facial recognition engine Support dual authentication with RFID card readers FaceMatch Manager is required for data integration One FaceMatch Manager supports 256 FR tablets Supports 3D anti-counterfeiting mechanism Suitable for access control 	<ul style="list-style-type: none"> AI camera with built-in facial recognition engine FaceMatch Manager is required for data integration One FaceMatch Manager supports 256 AI cameras Supports 3D anti-counterfeiting mechanisms Easy to deploy at large venues
 	 	 
<p>FaceMatch Edge/ Manager: UBX-110 Software: FaceMatch</p>	<p>FaceMatch Manager: UBX-110 Software: FaceMatch</p>	<p>FaceMatch Manager: UBX-110 Software: FaceMatch</p>

Advantech Headquarters

No. 1, Alley 20, Lane 26, Rueiguang Road, Neihu District, Taipei, Taiwan 11491

Tel: 886-2-7732-3399 Fax: 886-2-2171-3252

Email: WISE-iService@advantech.com Website: www.advantech.com

US/Canada: 1-888-576-9668
Europe: 00800-2426-8080/8081
China: 800-810-0345/8389
Taiwan: 800-777-111
Japan: 0800-500-1055
Korea: 080-363-9494/9495

Singapore: +65-6442-1000
Malaysia: 60-3-7725-4188
Australia: 1300-308-531
Thailand: 66-02-2488306-9
Indonesia: +62-21-7511939
Mexico: 1-800-467-2415

Solution Page



ADVANTECH

Enabling an Intelligent Planet