

**ADVANTECH**

*Enabling an Intelligent Planet*

The image is a composite digital illustration. On the right, a sleek, white and teal high-speed train is shown in motion, with a blurred green and yellow background suggesting speed. To the left, several orange industrial robotic arms are positioned in a factory-like setting. The entire scene is overlaid with a complex network of blue and white lines, resembling a data mesh or neural network. In the bottom left corner, there is a large, glowing yellow and orange circular graphic element. The overall color palette is dominated by blues, teals, oranges, and yellows, creating a sense of high-tech and industrial innovation.

# Advantech Empowers the Industrial Edge with Ubuntu Pro for Devices

# The Stability Imperative for Mission-critical Applications

As industrial systems move to the edge, mission-critical applications demand long-term stability, strong security, and scalable lifecycle management. Ubuntu Pro for Devices, combined with Advantech's industrial platforms and services, delivers a trusted foundation to power the industrial edge.



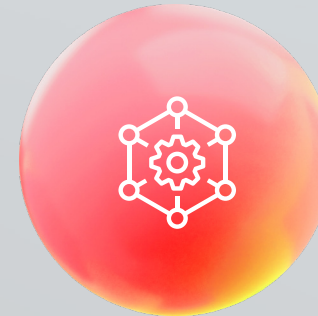
## Longevity

Up to 10 years of support to match hardware lifespan



## Immunity

Continuous CVE fixes and security maintenance



## Control

Centralized device lifecycle management via Landscape



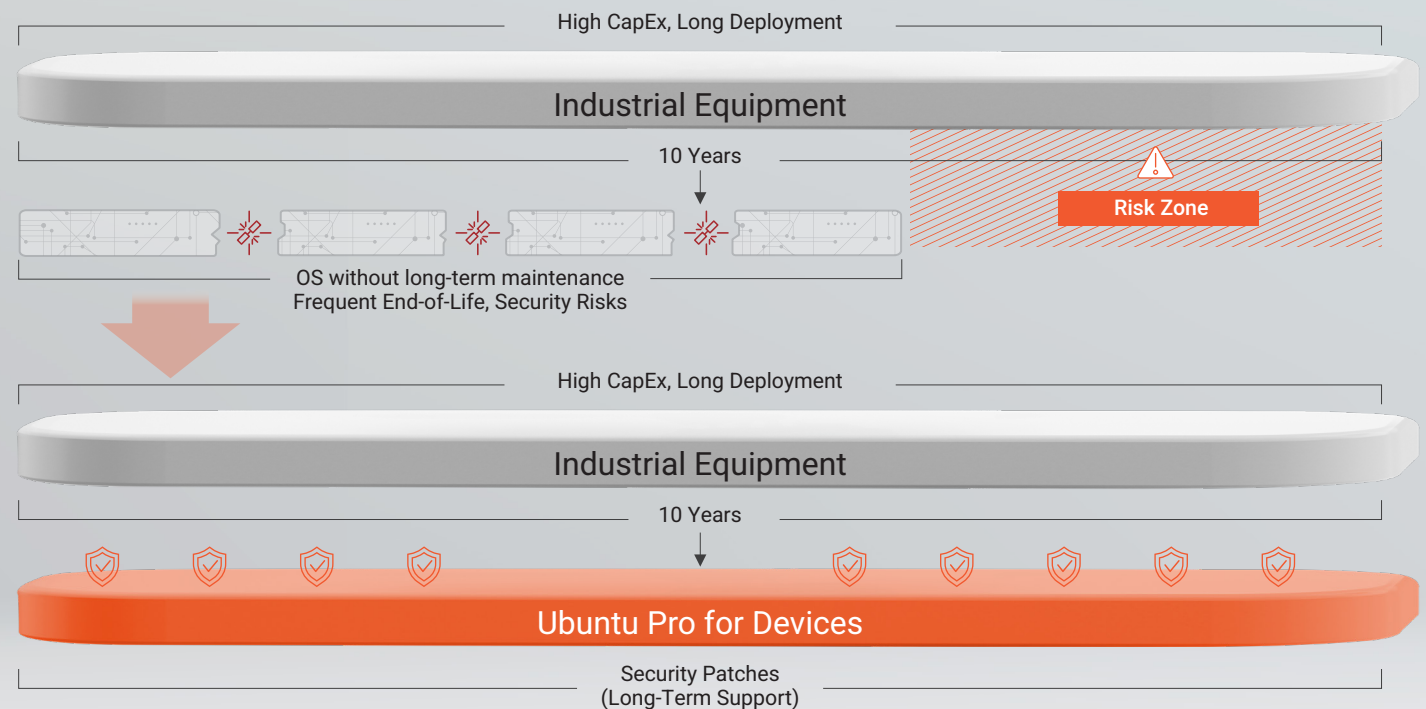
## Efficiency

One-click application of power-saving settings to reduce overall power consumption.

# Security as a Lifecycle, Not a Snapshot

Industrial equipment is designed to run for 10–20 years, while standard OS support ends much sooner. As a result, systems repeatedly enter end-of-life and risk zones, creating security vulnerabilities and operational disruption. Frequent OS upgrades or migrations become necessary, increasing maintenance cost and downtime.

Ubuntu Pro for Devices provides the long-term stability and security necessary for expensive industrial assets that cannot be easily replaced or updated. Continuous CVE remediation protects against vulnerabilities that impact safety and networks. This includes maintenance for the OS, OS and applications within Ubuntu Pro service scope.



# Operational Control from a Single Pane of Glass



Landscape is a systems management tool that enables security updates, auditing, access control, and compliance management for Ubuntu Pro for Devices.

A screenshot of the Landscape web interface. The left sidebar shows navigation options: Overview, Instances (selected), Activities, Scripts, Events log, Profiles, Repositories, and Org. settings. Below these are links for Documentation and Support, and a 'New web portal' button. The main content area is titled 'Instances' and features a search bar, filters, and columns options. A table lists instances with columns for Title, Status, Upgrades, OS, Tags, Availability Zone, Ubuntu Pro Expiration, and Last Ping Time. The table contains four rows of data, all marked as 'Offline'.

TITLE HOSTNAME	STATUS	UPGRADES	OS	TAGS	AVAILABILITY ZONE	UBUNTU PRO EXPIRATION	LAST PING TIME
ARK-1222_26 admin.lan	Offline	• Packages up to date	Ubuntu 24.04.2 LTS	---	---	Jun 01, 2034, 07:59	Jan 26, 2026, 16:09
ARK-3534_Alex ark3534-Def...	Offline	• Packages up to date	Ubuntu 22.04.2 LTS amd64 (Cubic 2025-07-15 10:43)	---	---	Jun 01, 2032, 07:59	Nov 21, 2025, 16:03
RSB-3810 mtk-genio.lan	Offline	• Packages up to date	Ubuntu 22.04.5 LTS	---	---	Jun 01, 2032, 07:59	Feb 25, 2026, 15:01
WK2 ark-Default.s...	Offline	• Package upgrades alert, security upgrades alert	↑ Ubuntu 22.04.2 LTS	---	---	Jun 01, 2032, 07:59	Mar 06, 2026, 20:05

- **Centralized Updates:**  
Push security patches to thousands of devices instantly.
- **Health Monitoring:**  
Visibility into system status in time.
- **Policy Enforcement:**  
Maintain consistent configurations across all endpoints.
- **Scalability:**  
Designed for large, distributed industrial fleets.

# Efficiency is the New Reliability

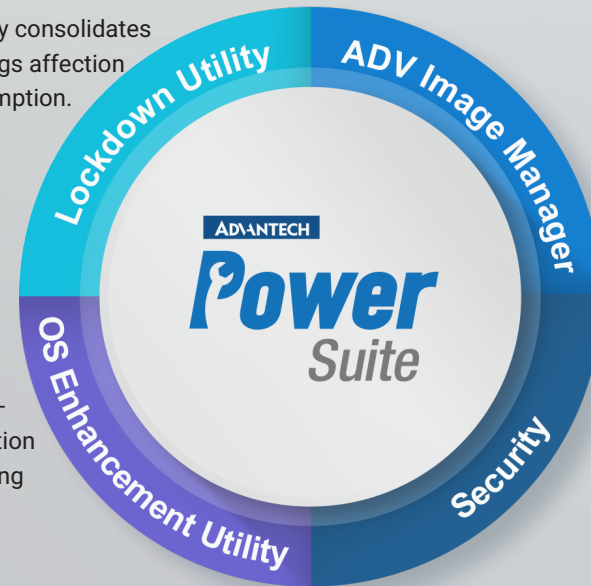
Advantech Power Suite (APS) is a value-added utility for Ubuntu and Windows that enables easy and efficient system customization through a user-friendly interface

- **Analysis:**

Systematically consolidates system settings affection power consumption.

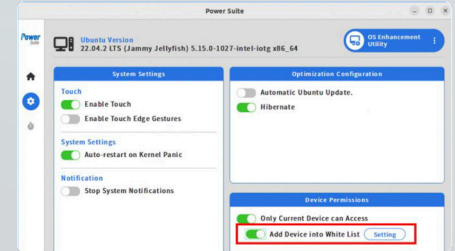
- **Action:**

Intuitive GUI enabling “one-click” application of power-saving profiles.



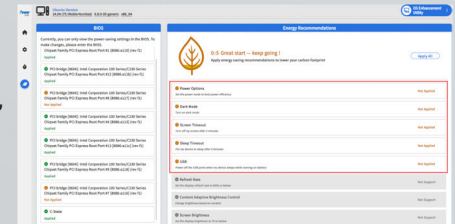
- **Security Integration:**

Peripheral management prevents unauthorized power drain.



- **Result:**

Reduced energy usage, extended battery life for AGCs, and lower carbon footprint.



Unoptimized Power Consumption



Optimized & Sustainable

# Optimizing Human-Machine Collaboration in Smart Factories

Collaborative robots (cobots) in smart factories require a stable and secure OS platform to ensure safe human-machine collaboration over long operational lifecycles.



## Reliability & Uptime

Ubuntu Pro for Devices provides up to 10 years of long-term support, ensuring OS consistency throughout cobot deployment.

With continuous CVE fixes and security maintenance, cobot control systems and communication interfaces remain protected from evolving cyber threats.



## Power Optimization

Advantech Power Suite systematically analyzes system settings that affect power consumption and offers an intuitive GUI that enables one-click application of power-saving settings to reduce overall power consumption.

By applying recommended power profiles, users can significantly reduce energy usage, extend battery life, and lower their carbon footprint.



## Fleet Control

Using Landscape, factory operators can centrally manage OS updates, monitor system health, and enforce security policies across multiple production lines.



## KEY VALUES

- Long-term OS support for cobot lifecycles
- Secure operations with continuous CVE remediation
- Centralized OS management via Landscape
- Improved system reliability and reduced energy usage via Advantech Power Suite

# Securing Autonomous Logistics (AGV/AMR) for the Long Haul

AGVs and AMRs operate continuously in dynamic environments, making stable OS foundation and secure control of physical access are critical parts of reliable system design.



## Cyber Protection

Ubuntu Pro for Devices provides continuous CVE fixes protect vehicle communication stacks and navigation software from network-based risks.



## Physical Port Security

Advantech Power Suite enables USB device whitelisting, allowing access only to permitted peripherals. This prevents unauthorized physical connections.



## Distributed Management

Landscape manages large distributed fleet, ensuring consistent software behavior across extended deployment periods.



## KEY VALUES

- Stable OS foundation for continuous warehouse workflows.
- Secure autonomous operations with USB whitelisting.

# Railway Infrastructure & Edge AI Safety

Edge AI-based railway systems for handling obstacle detection and track inspection require uncompromising stability and must operate in geographically scattered locations.



## Edge AI Stability

Ubuntu Pro for Devices delivers the long-term OS support required to keep AI models and data pipelines functional over years of operation.



## Remote Reach

Landscape manages geographically dispersed devices, allowing remote patching of assets that are miles apart.



## Threat Immunity

Continuous security maintenance protects critical communication interfaces from emerging threats.



## KEY VALUES

- Continuous security updates for safety monitoring.
- Centralized management of geographically distributed assets.

# Semiconductor Manufacturing & Cybersecurity

Semiconductor equipment operates under strict precision requirements with lifecycles exceeding a decade. Any change to the software environment can trigger costly revalidation efforts.



## Avoiding Revalidation

Ubuntu Pro for Devices' long-term support guarantees OS consistency, removing the need to re-qualify equipment due to forced OS upgrades.



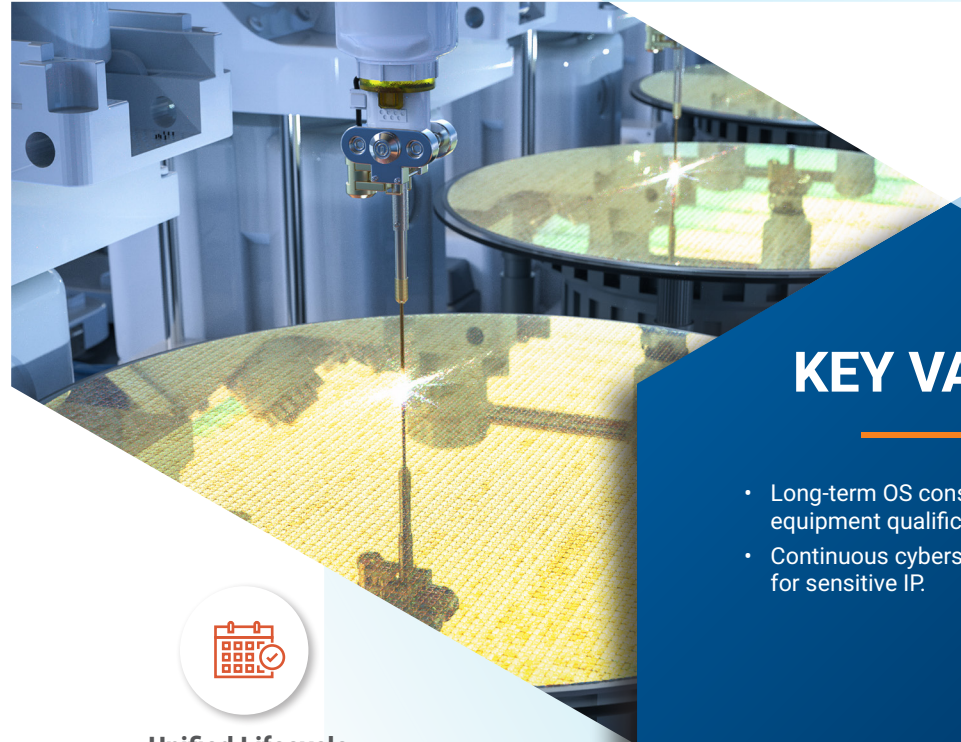
## IP Security

Continuous security patching protects sensitive manufacturing data and trade secrets throughout the equipment's life.



## Unified Lifecycle

Landscape provides a single pane of glass for managing the OS lifecycle across all equipment.



## KEY VALUES

- Long-term OS consistency reduces equipment qualification efforts.
- Continuous cybersecurity protection for sensitive IP.

# Secure. Reliable. Managed.

Ubuntu Pro for Devices and Advantech Power Suite delivers the three essentials for IoT industry.



Any Questions?  
**Contact Us**



Explore More About  
**Ubuntu Pro for Devices**



Review the **Advantech Power Suite**



Get **Ubuntu Pro for Devices**

