

Bringing Devices Online, Control and Update at Scale

Rison Yeh, Software PM



WISE-PaaS/DeviceOn Empower Edge Intelligence

WISE-PaaS/ DeviceOn

Ready on
WISE-PaaS Marketplace



Remote Management & Control



Over-the-Air Software Updates



Automated Alert Notification



Embedded Boards



Embedded PCs



Embedded Computers

Wireless IoT Gateways



Vertical Focused Solutions



Device Management for IoT Applications

Medical Equipment



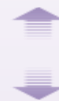
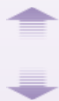
Intelligent Factory



Semiconductor



New Energy



Event Notification



Scheduling Management



Device Management



Batch Provisioning



Analytics Dashboard



Operations Center



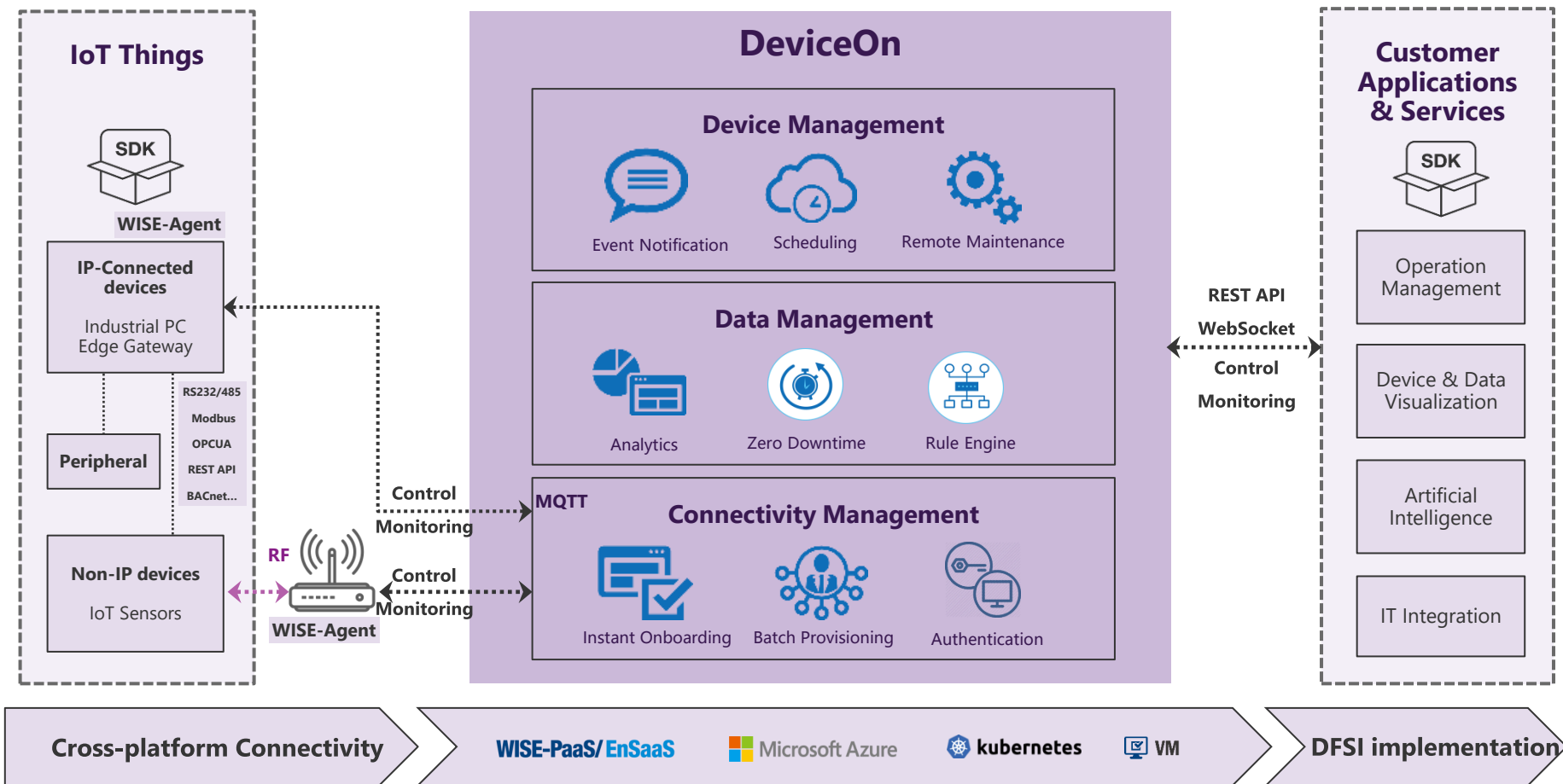
Remote Maintenance



Instant Onboarding

WISE-PaaS/DeviceOn

IoT Device Management & Data Flow



Device Lifecycle Management

Onboard, Configure, Monitor, Update, Retire

Device Onboard & Registration

- ✓ Zero-touch Onboarding
- ✓ Batch Import, Provisioning & Configuration
- ✓ Device Migrate, Transfer, Replace, and Retire

Data Acquisition & Visualizer

- ✓ Device Real-time & Historical Data
- ✓ WISE-PaaS/Dashboard Built-In

Plan

- ✓ Hardware & Software Monitoring
- ✓ Power Management
- ✓ Remote Trouble shooting
- ✓ Backup/Recovery, Protection
- ✓ Windows 10 Lockdown (Security & Protection)
- ✓ Device Anomaly Detection (Rule Engine)
- ✓ Notification & Alert

Device Monitoring & Diagnostics

- ✓ Software, Firmware & Configuration Update
- ✓ Advantech BIOS Update

Device SW Updates & Maintenance

EOL

((ota))

Real-time Monitoring

Assist you in managing, tracking, securing, and sustaining all your devices

- **Device List & Status**
- **SW/HW Health Monitoring**
- **HDD Predictive Maintenance**
- **Device Events**

STATUS	DEVICE NAME	UPGRADE	POWER	PROTECTION	BACKUP/RECOVERY	GROUP NAME	WAKE-ON-LAN
●	AIMB-584		Power off Restart Sleep			Default demo: Default Dylan.Chang@advantech.com.tw: Default Scott68.Chang@advantech.com.tw: Default	Direct Mode
●	DESKTOP-OJHJ...		Power on			Default demo: Default Dylan.Chang@advantech.com.tw: D Scott68.Chang@advantech.com.tw: M	
●	Deepaktyagi1		Power on			Default chen.jun@advantech.com.cn: Defau Dylan.Chang@advantech.com.tw: D andrew.chou@advantech.com: MIO AINDEMO: Default	
●	LightSensor		Power on			Default	
●	NB080522		Power on			Default Dylan.Chang@advantech.com.tw: D Scott68.Chang@advantech.com.tw: A0404: Default	
						Default	

Network Speed
80 Mbps

Software Process
31 records

Disk Storage
48 / 465 GB

Device Events

EVENT MESSAGE	TIME STAMP
Device connected	2019-09-13 07:32:57
Device lost connected	2019-09-13 07:29:28
Device connected	2019-09-13 07:20:20

3 records

CPU Usage
1%

Memory Usage
27%

Network Monitoring

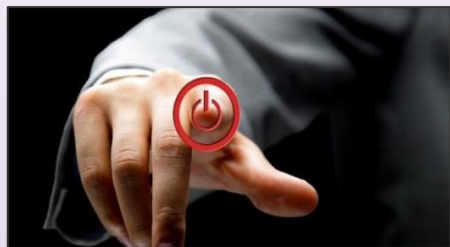
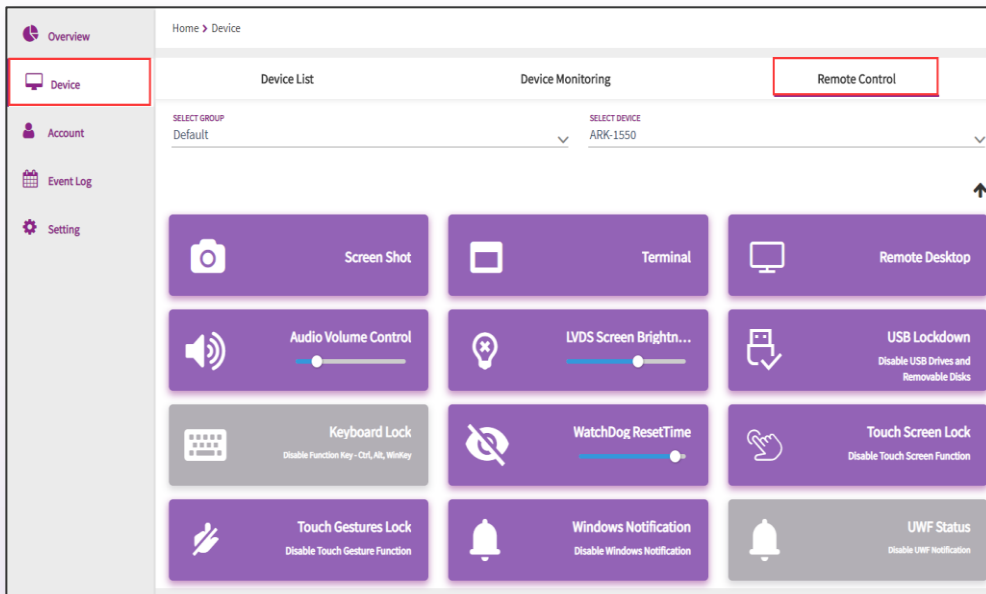
Index2-以太网2 Index1-以太网1

Temperature
CPU System

Secure Control

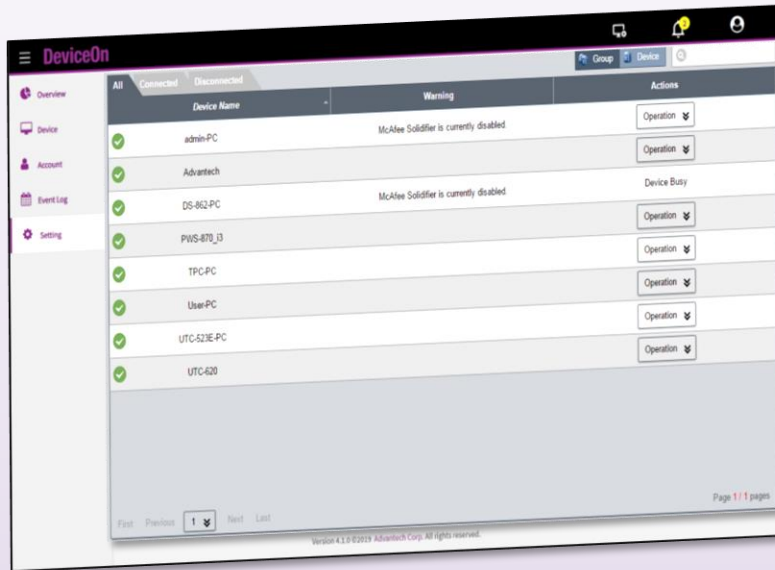
Easily configure and control your devices

- **Remote Power Management**
- **HW Watchdog**
- **Windows Lockdown Control & Protection**
 - Volume, LVDS Brightness Control
 - USB Lockdown, Keyboard Lock
 - Touch Screen & Gestures Lock
 - Notification block
 - UWF Protection

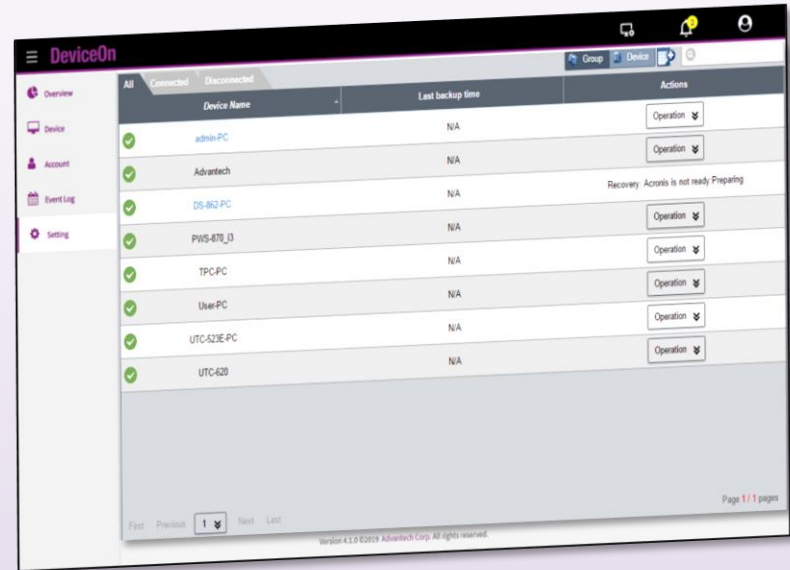


Simplicity of Protection & Backup/Recovery

- Powered by **Acronis**
Backup and Recovery technology
 - Hot backup without interrupting current tasks
 - Regular automated backup with dynamic scheduling



- Powered by  **McAfee**
Application Control technology
 - Dynamic whitelisting model to block unauthorized apps
 - No continuous virus definition updating required

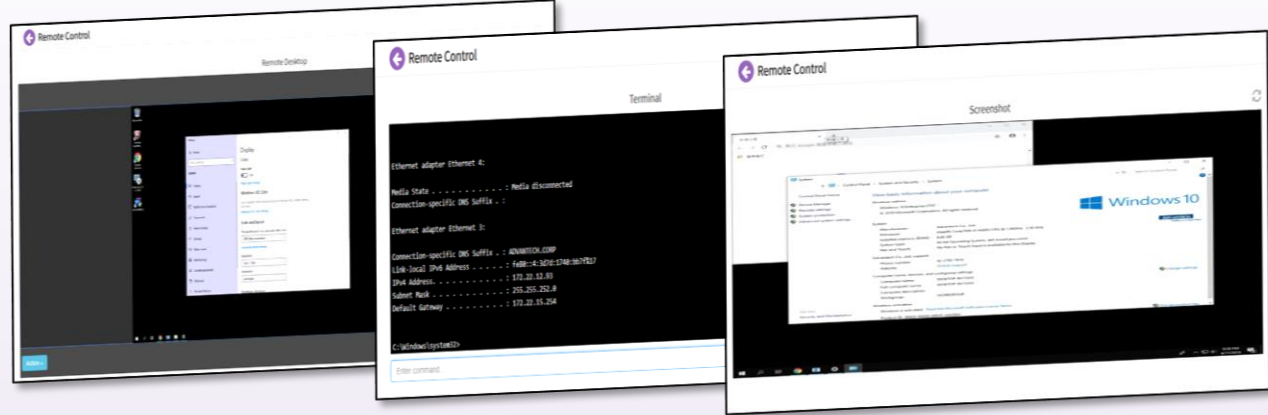


Device Remote Diagnostics

Monitor errors and bugs and rectify them in real-time to minimize device downtime

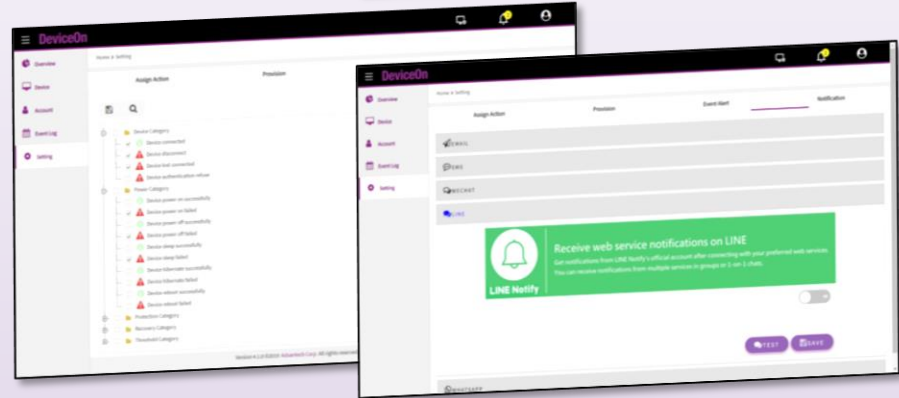
- **Remote troubleshooting tool to reduce maintenance cost**

- Remote Desktop
- Screenshot
- Terminal



- **Notification Services**

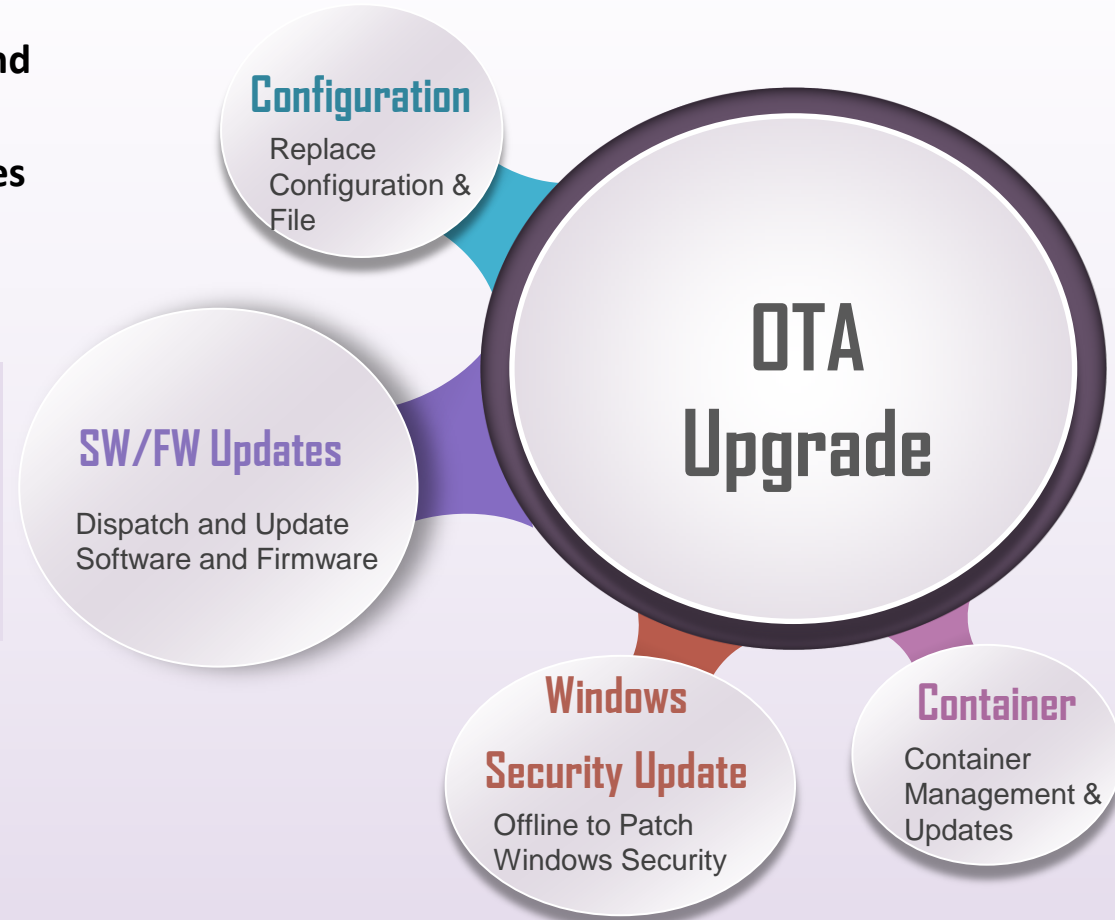
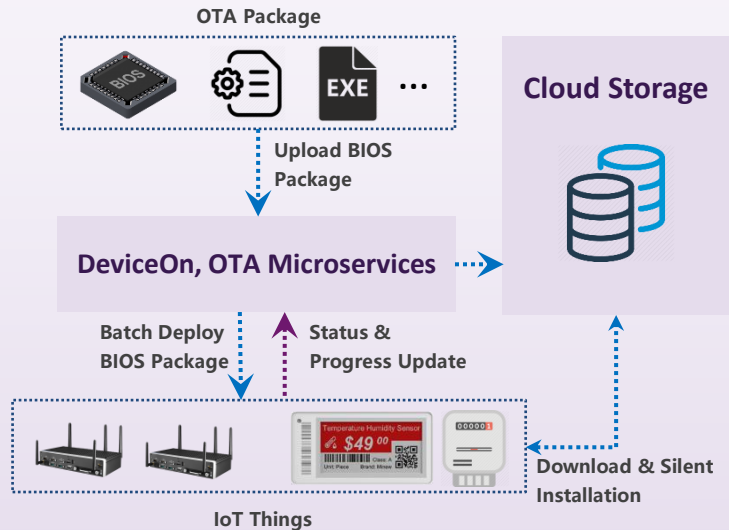
- Line/Wechat/WhatsApp/Mail/SMS



Device Software Updates & Maintenance (OTA)

Simplify Remote provisioning and updates on firmware, driver, and software at scale

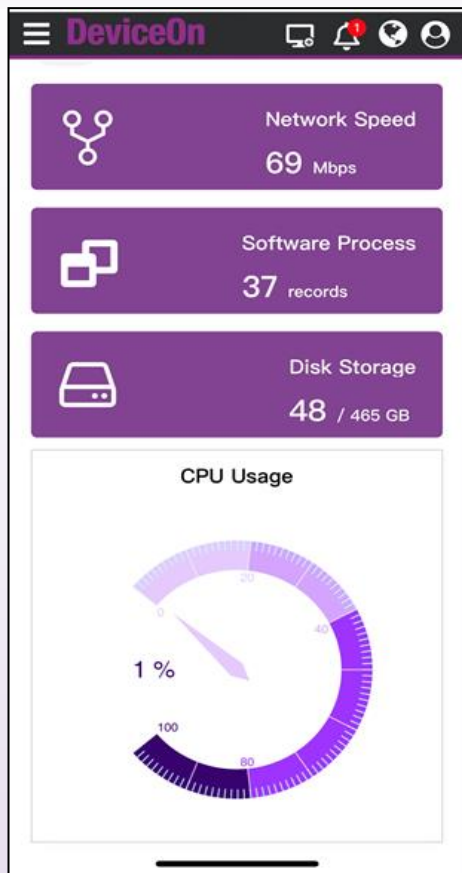
- OTA storage/package management and online packing tool
- Software remote patching and updates (Single/Group/Rule)
- Update status report



Live Demo

- ✓ Device Instant Onboarding
- ✓ Device Monitoring & Control
- ✓ Data Acquisition & Visualization
- ✓ OTA Software Updates & Maintenance

DeviceOn Mobile UI & APP



Mobile Phone APP



DeviceOn Free Trial



Wechat APP

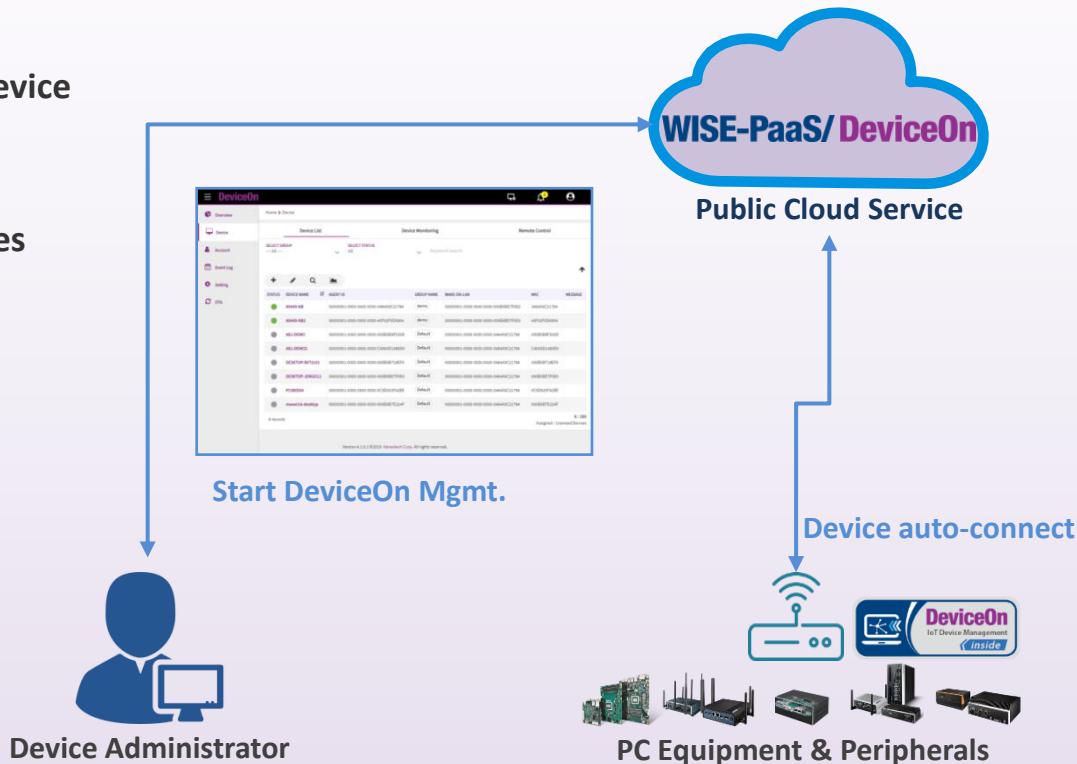
HW Bundle Service (Free Trail License)

Secure and self-onboard IoT devices in a minute at Scale

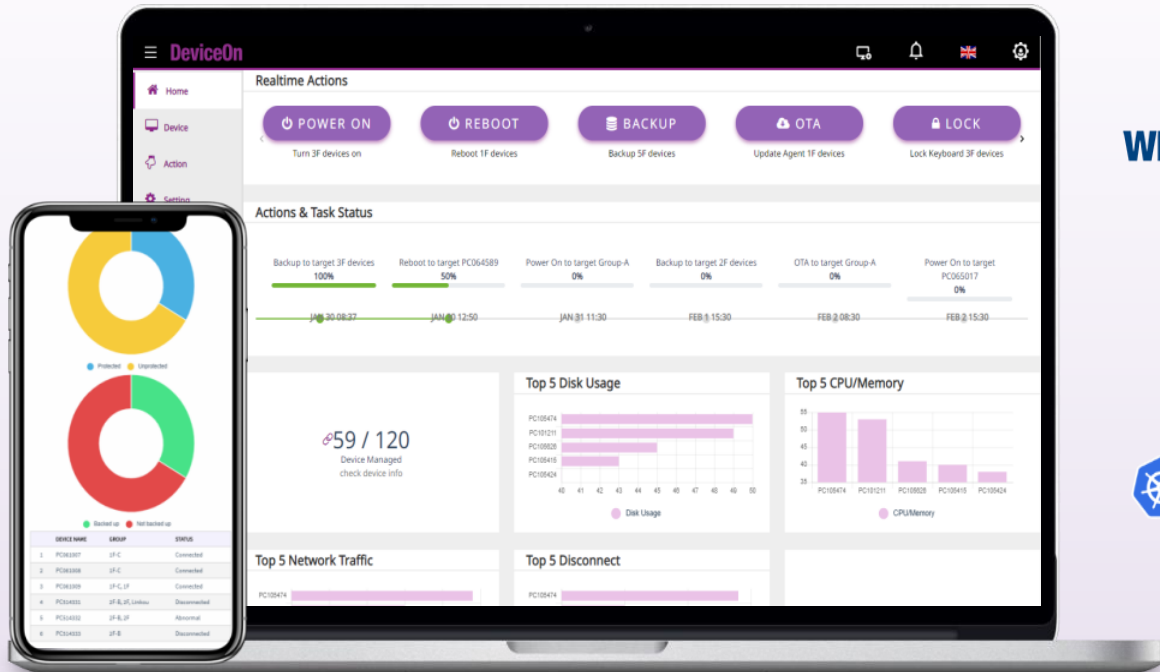
- Online registration with secure device ID and field configuration
- Initial Provisioning for bulk devices
- Free Function Trial (6 months)



DeviceOn Free Trial



Work Anywhere on Popular Platform and Service



Public Cloud Platform

WISE-PaaS/EnSaaS
(Cloud Foundry Container)

Microsoft Azure
(AKS + Azure IoT Hub)

On-Premise Service



kubernetes
(Container PaaS)



VM

(Standalone Installation)

WISE-Stack

(EnSaaS Private Cloud)

WISE-PaaS/ DeviceOn

- ✓ **Build-in for All Advantech System and Boards H/W**
 - Empower Edge Intelligence with DeviceOn IoT Core Services
- ✓ **A Ready-to-use solution for IoT Device Operation Management**
 - Remote Monitor & Control, Automated Alert Notification, OTA SW Updates
- ✓ **Easy-to-Develop SDK for Fast Realizing IoT Industrial Applications**
 - WISE-Agent plugin, UI framework plugin, REST API, Visualization Tool

Co-Creating the Future of the IoT World

